

WILLIAMS PRODUCTION RMT COMPANY
Well location, FEDERAL PA 524-20, located as shown in Lot 8 of Section 20, T6S, R95W, 6th P.M., Garfield County, Colorado.

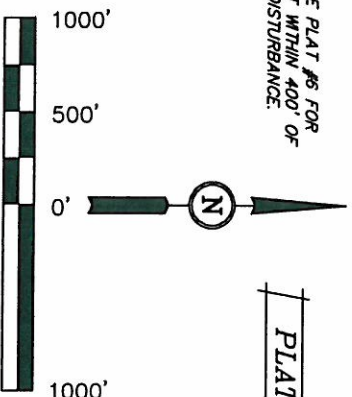
Well location, FEDERAL PA 524-20, located as shown in Lot 8 of Section 20, T6S, R95W, 6th P.M., Garfield County, Colorado.

SPOT ELEVATION AT THE NORTHWEST CORNER OF SECTION 30, T5S, R95W, 6th P.M. TAKEN FROM THE FORKED GULCH QUADRANGLE, COLORADO, GARFIELD COUNTY, 7.5 MINUTE SERIES (TOPOGRAPHICAL MAP) PUBLISHED BY THE UNITED STATES DEPARTMENT OF THE INTERIOR, GEOLOGICAL SURVEY. SAID ELEVATION IS MARKED AS BEING 5966 FEET.

BASIS OF BEARINGS

BASIS OF BEARINGS IS A G.P.S. OBSERVATION.

NOTE:
SEE CURRENT FOOTAGE PLAT #6 FOR
EXISTING IMPROVEMENT WITHIN 400' OF
THE PROPOSED WELL DISTURBANCE.



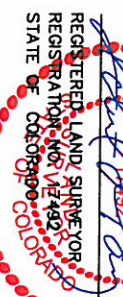
CERTIFICATE

THIS IS TO CERTIFY THAT THE ABOVE FLOW WAS PREPARED FROM FIELD NOTES OF ACTUAL SURVEYS MADE BY ME OR UNDER MY SUPERVISION AND THAT THE SAME ARE TRUE AND CORRECT, TO THE BEST OF MY KNOWLEDGE AND BELIEF.

Revised: 10-06-10 D.R.B.

WC 1921 Brass
Cap 1.2' High
Lat: 39.502167
-Long: 108.013114

REGISTERED LAND SURVEYOR
REGISTRATION NO. 17492
STATE OF COLORADO



UNTAH ENGINEERING & LAND SURVEYING
85 SOUTH 200 EAST - VERNAL, UTAH 84078

(435) 789-1017

$$1'' = 1000'$$

DATE SURVEYED:	DATE DRAWN:
05-17-10	06-12-10

B.H.

D.R.B.

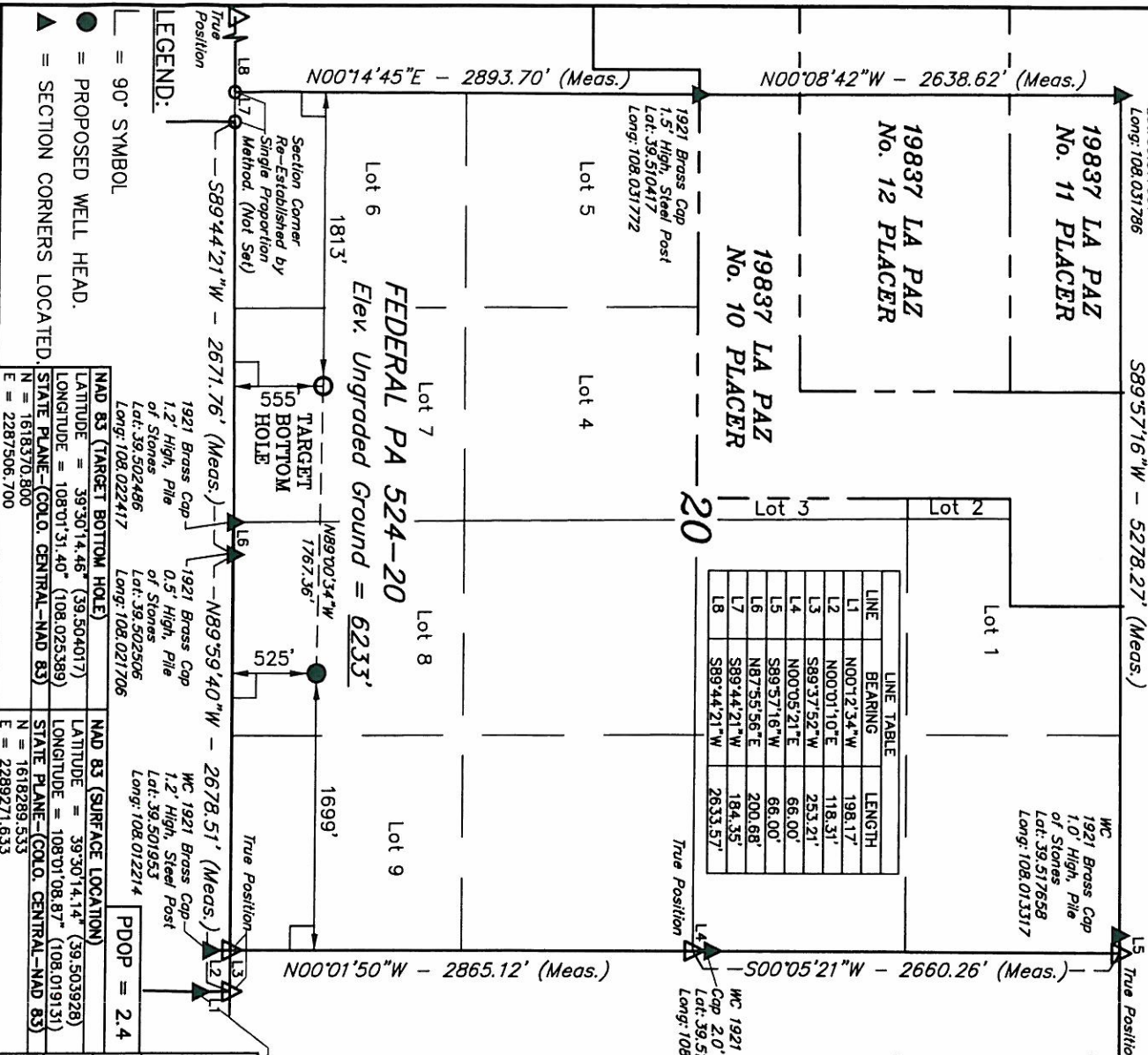
GLIO PLAT

COOL

1

PRODUCTION

PMT COMPANY



● = PROPOSED WELL HEAD.
▲ = SECTION CORNERS LOCATED

NAD 83 (TARGET BOTTOM HOLE)	NAD 83 (SURFACE LOCATION)
LATITUDE = 39.3014.46° (39.504017)	LATITUDE = 39.3014.14° (39.503928)
LONGITUDE = 108.0131.40° (108.025389)	LONGITUDE = 108.0108.87° (108.019131)
STATE PLANE--(COLO. CENTRAL--NAD 83)	STATE PLANE--(COLO. CENTRAL--NAD 83)
N = 16181370.800	N = 1618289.533
E = 2287506.700	E = 2289271.633

PDOP = 2.4