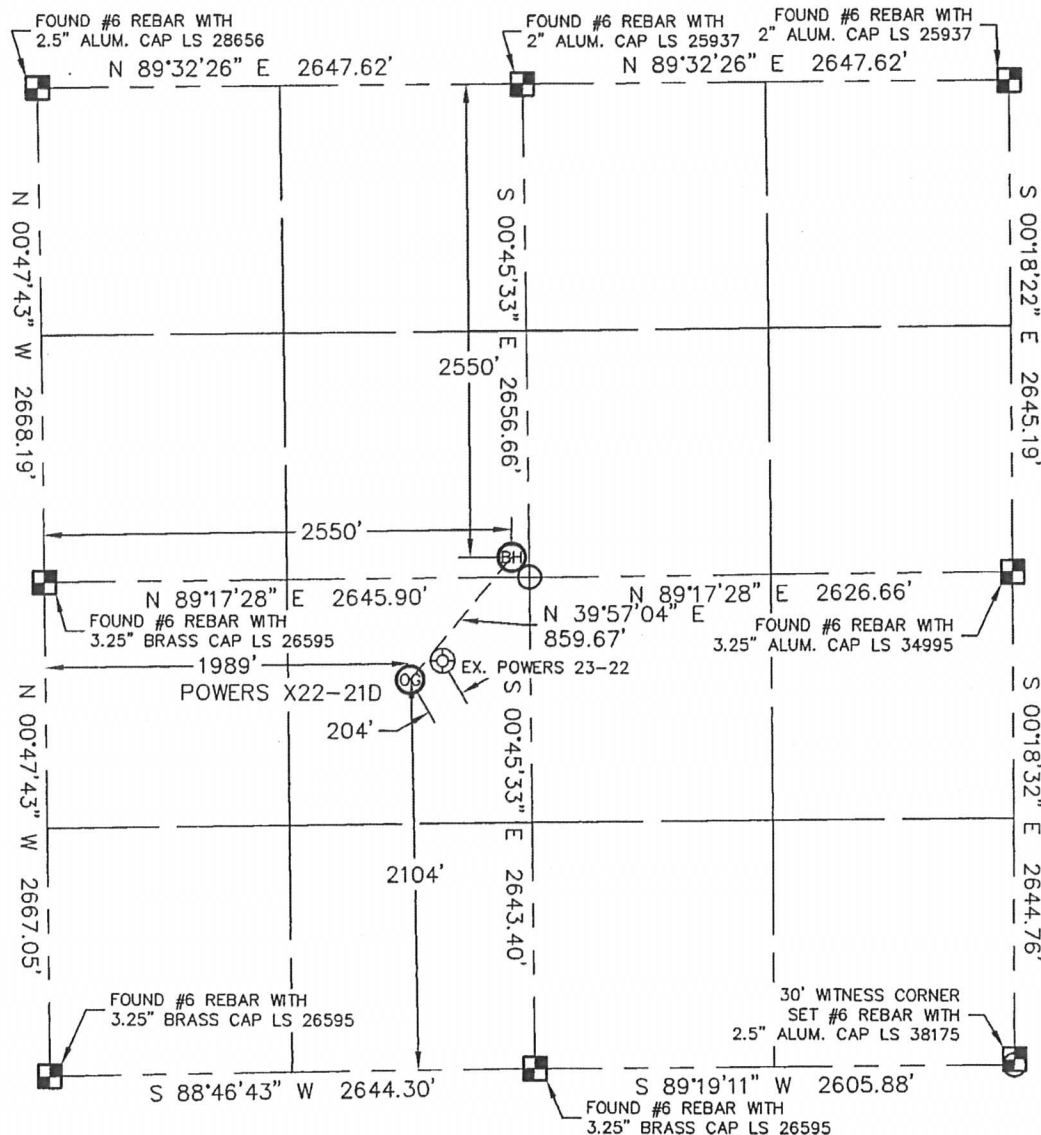


Lat40°, LLC 1635 Foxtrail Drive, Suite 325 Loveland, CO 80538

WELL LOCATION CERTIFICATE

THIS MAP DOES NOT REPRESENT A BOUNDARY SURVEY

SECTION: 22
TOWNSHIP: 2N
RANGE: 65W



In accordance with a request from Mike Rodine with Noble Energy Inc.

Lat40°, LLC has determined the surface location of the POWERS X22-21D to be 2104' from the SOUTH line and 1989' from the WEST line and the bottom hole to be 2550' from the NORTH line and 2550' from the WEST line as measured at right angles from the section line of Section 22, Township 2 North, Range 65 West of the Sixth Principal Meridian, County of Weld, State of Colorado.

I hereby state that this Well Location Certificate was prepared by me, or under my direct supervision, that the fieldwork was completed on 8/31/10, for and on behalf of Noble Energy Inc. That this is not a Land Survey Plat or an Improvement Survey Plat, and that it is not to be relied upon for establishment of fence, building, or other future improvement lines.

NOTE:

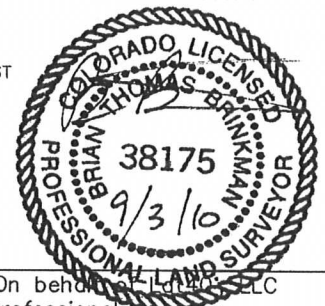
- 1) Bearings shown are Grid Bearings of the Colorado State Plane Coordinate System, North Zone, North American Datum 1983/2007. The lineal dimensions as contained herein are based upon the "U.S. Survey Foot."
- 2) Ground elevations are based on an observed GPS elevation (NAVD 1988 DATUM).
- 3) NEAREST EXISTING WELL: POWERS 23-22 204'
- 4) IMPROVEMENTS: See LOCATION DRAWING exhibit for all visible improvements within 400' of disturbed area.
- 5) SURFACE USE: RANGELAND
- 6) INSTRUMENT OPERATOR: KYLE RUTZ

SURFACE LOCATION

LATITUDE: 40.12260°N
LONGITUDE: 104.65241°W
PDOP: 1.7
ELEV: 4887'
1/4, 1/4: NE1/4SW1/4
NEAREST PROPERTY LINE: 1989' WEST

BOTTOM HOLE

LATITUDE: 40.12439°N
LONGITUDE: 104.65041°W



Brian T. Brinkman—On behalf of Lat40°, LLC
Colorado Licensed Professional
Land Surveyor No. 38175

PROJECT#: 2010052

NOTE

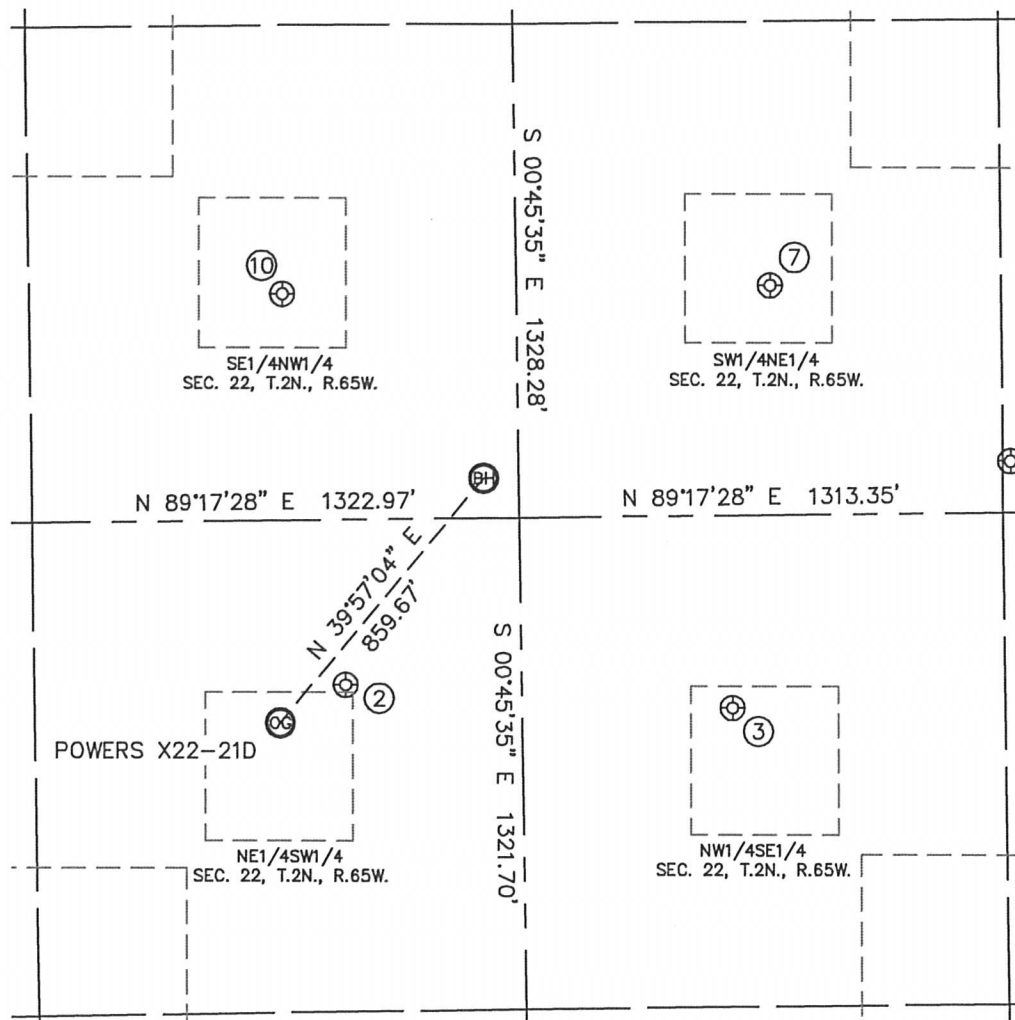
According to Colorado law, you must commence any legal action based upon any defect in this W.L.C. within three years after you discover such defect. In no event, may any action based upon any defect in this survey be commenced more than ten years after the date of the certificate shown hereon. (13-80-105 C.R.S.)

Lat40°, LLC 1635 Foxtrail Drive, Suite 325 Loveland, CO 80538

SITE SKETCH

POWERS X22-21D

SECTION: 22
TOWNSHIP: 2N
RANGE: 65W



②

POWERS 23-22
NE1/4SW1/4
2203' FSL
2167' FWL
LAT-40.12287°N
LONG-104.65178°W
PDOP: 1.8
ELEV: 4892

③

ROBERT POWERS X22-10
NW1/4SE1/4
2126' FSL
2052' FEL
LAT-40.12268°N
LONG-104.64802°W
PDOP: 1.6
ELEV: 4920

⑦

ROBERT POWERS X22-7
SW1/4NE1/4
2036' FNL
1942' FEL
LAT-40.12580°N
LONG-104.64762°W
PDOP: 1.4
ELEV: 4917

⑩

ROBERT POWERS X22-6
SE1/4NW1/4
2052' FNL
2010' FWL
LAT-40.12576°N
LONG-104.65235°W
PDOP: 2.2
ELEV: 4888

