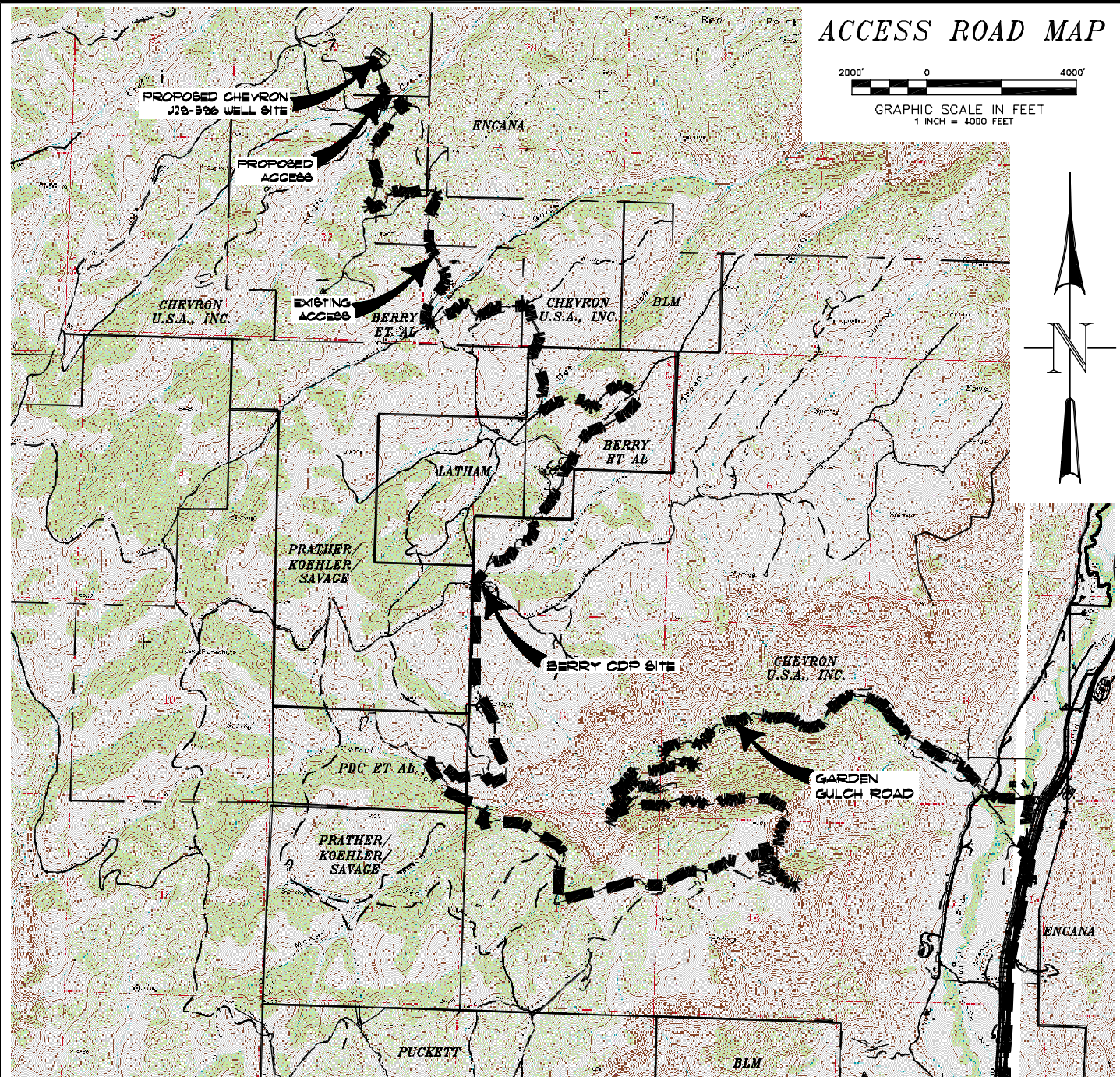
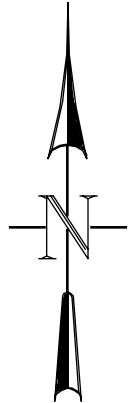
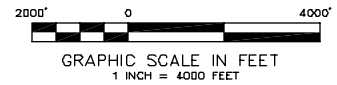


ACCESS ROAD MAP



ACCESS:

FROM THE INTERSECTION OF HIGHWAY 6 & 24 AND COUNTY ROAD 215 AT PARACHUTE, PROCEED IN A GENERAL NORTHWESTERLY DIRECTION ALONG COUNTY ROAD 215 ± 7.2 MILES TO AN INTERSECTION WITH A DIRT/GRAVEL ROAD ON THE LEFT, PROCEED LEFT IN A GENERAL NORTHWESTERLY DIRECTION ± 350 FEET TO AN INTERSECTION WITH A DIRT/GRAVEL ROAD ON THE RIGHT, PROCEED RIGHT IN A GENERAL NORTHERLY DIRECTION ± 0.3 MILES TO AN INTERSECTION WITH A DIRT/GRAVEL ROAD ON THE LEFT, PROCEED LEFT IN A GENERAL WESTERLY DIRECTION CROSSING THE PARACHUTE CREEK BRIDGE, PROCEED IN A GENERAL WESTERLY DIRECTION ALONG THE GARDEN GULCH ROAD ASCENDING THRU THE BOOKCLIFFS ± 10.4 MILES TO THE BERRY CDP SITE ON THE RIGHT, CONTINUE FORWARD PAST THE BERRY CDP SITE IN A GENERAL NORTHERLY DIRECTION APPROXIMATELY 5.1 MILES TO AN INTERSECTION WITH A PROPOSED FLAGGED ACCESS CENTERLINE ON THE RIGHT, PROCEED RIGHT IN A GENERAL NORTHERLY DIRECTION APPROXIMATELY 0.2 MILES TO THE PROPOSED CHEVRON #J29-596 WELL PAD, BEING THE LOCATION.



CONSTRUCTION SURVEYS, INC.
0012 SUNRISE BLVD.
SILT, CO 81652
(970)876-5753

Chevron J29-596
NW 1/4 SE 1/4 SECTION 29, T. 5 S., R. 96 W.
BERRY PETROLEUM COMPANY

SCALE: 1" = 2000'

SHEET 4 of 11