

T1S, R104W, 6th P.M.

KGH OPERATING COMPANY

Well location, MEAGHER #10-1H, located as shown in Lot 3 Section 10, T1S, R104W, 6th P.M., Rio Blanco County, Colorado.

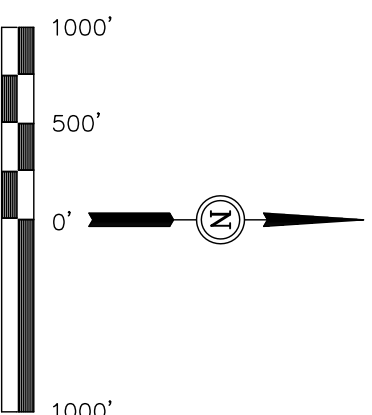
BASIS OF ELEVATION

SPOT ELEVATION LOCATED AT THE W.C. WEST 1/4 CORNER OF SECTION 9, T1S, R103W, 6th P.M. TAKEN FROM THE BANTA RIDGE QUADRANGLE, COLORADO, RIO BLANCO COUNTY, 7.5 MINUTE SERIES (TOPOGRAPHIC MAP) PUBLISHED BY THE UNITED STATES DEPARTMENT OF THE INTERIOR, GEOLOGICAL SURVEY. SAID ELEVATION IS MARKED AS BEING 5876 FEET.

BASIS OF BEARINGS

BASIS OF BEARINGS IS A G.P.S. OBSERVATION.

NOTE:
THE PROPOSED BOTTOM HOLE FOR THIS WELL IS LOCATED IN THE NE 1/4 NE 1/4 OF SECTION 11, T1S, R104W, 6th P.M. AT A DISTANCE OF 750 FNL 1198' FEL. IT BEARS N67°13'03"E 5423.10' FROM THE PROPOSED WELL HEAD.



CERTIFICATE

THIS IS TO CERTIFY THAT THE ABOVE PLAT WAS PREPARED FROM FIELD NOTES OF ACTUAL SURVEYS MADE BY ME OR UNDER MY SUPERVISION AND THAT THE SAME ARE TRUE AND CORRECT TO THE BEST OF MY KNOWLEDGE AND BELIEF.

REGISTERED LAND SURVEYOR
REGISTRATION NO. 51792
STATE OF COLORADO

NOTE:
SEE ADDENDUM TO LEGAL PLAT FOR EXISTING IMPROVEMENTS WITHIN 400' OF THE PROPOSED WELL DISTURBANCE.

REVISED: 10-09-10

UINTAH ENGINEERING & LAND SURVEYING
85 SOUTH 200 EAST - VERNAL, UTAH 84078
(435) 789-1017

PDOP = 2.1

- LEGEND:
- = 90° SYMBOL
 - = PROPOSED WELL HEAD.
 - ▲ = SECTION CORNERS LOCATED.
 - △ = SECTION CORNERS RE-ESTABLISHED.
- (Not Set on Ground)

(AUTONOMOUS) NAD 83 (SURFACE LOCATION)		SCALE	DATE SURVEYED:	DATE DRAWN:
LATITUDE =	39°58'30.69" (39.975192)	1" = 1000'	09-15-08	09-18-08
LONGITUDE =	109°02'55.17" (109.048658)	PARTY	REFERENCES	
(AUTONOMOUS) NAD 27 (SURFACE LOCATION)		J.R. T.B. D.P.	G.L.O. PLAT	
LATITUDE =	39°58'30.80" (39.975222)	WEATHER	FILE	
LONGITUDE =	109°02'52.77" (109.047992)	WARM	KGH OPERATING COMPANY	

T1S, R104W, 6th P.M.

KGH OPERATING COMPANY

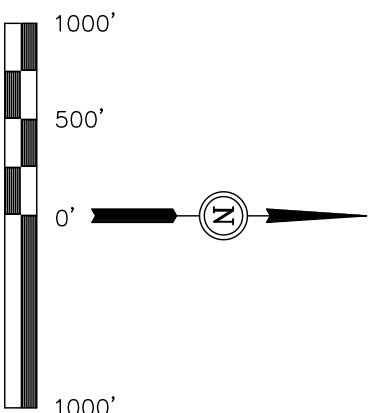
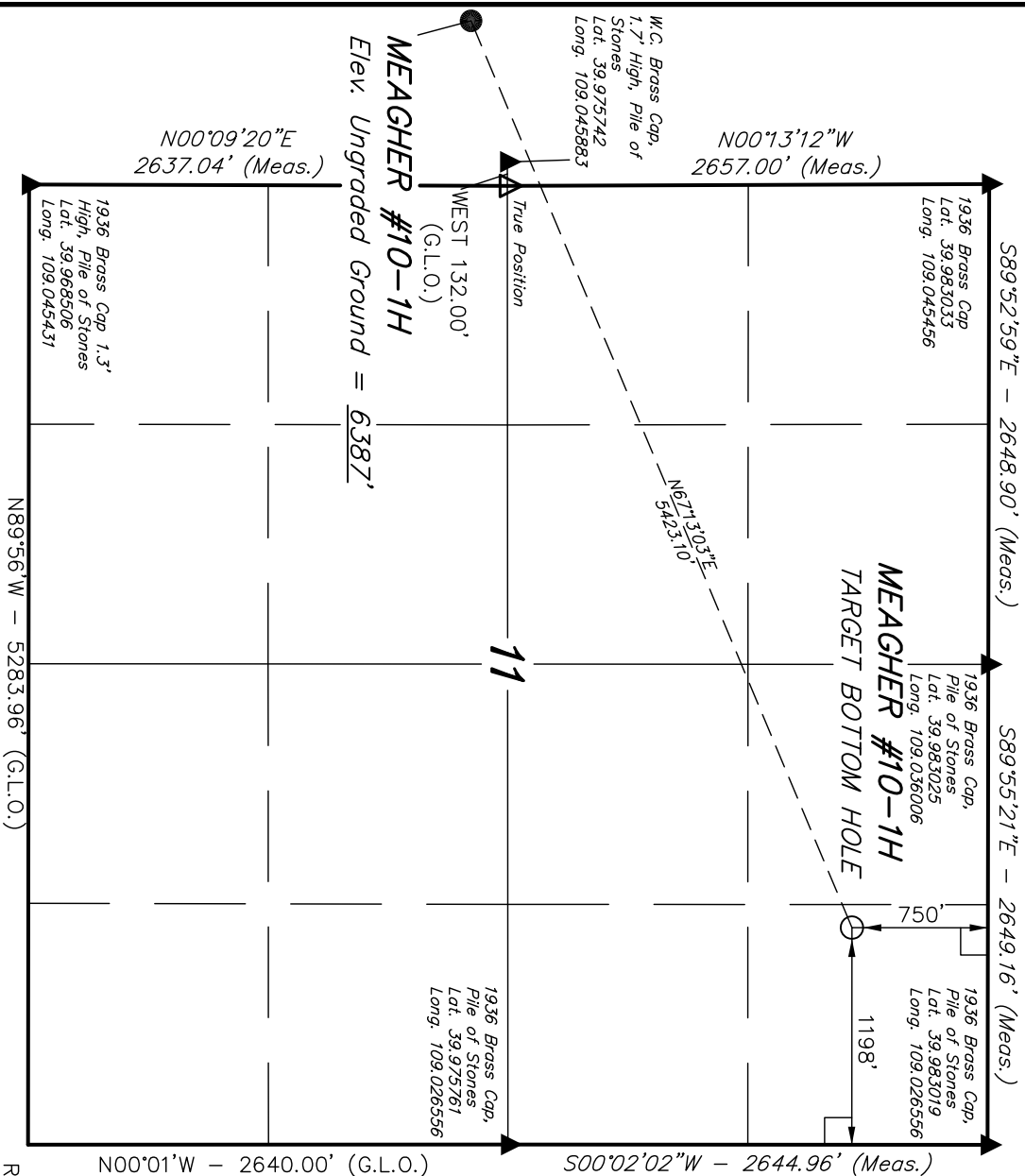
Well location, MEAGHER #10-1H (TARGET BOTTOM HOLE), located as shown in the NE 1/4 NE 1/4, Section 11, T1S, R104W, 6th P.M., RIO Blanco County, Colorado.

BASIS OF ELEVATION

SPOT ELEVATION LOCATED AT THE W.C. WEST 1/4 CORNER OF SECTION 9, T1S, R103W, 6th P.M. TAKEN FROM THE BANTA RIDGE QUADRANGLE, COLORADO, RIO BLANCO COUNTY, 7.5 MINUTE SERIES (TOPOGRAPHIC MAP) PUBLISHED BY THE UNITED STATES DEPARTMENT OF THE INTERIOR, GEOLOGICAL SURVEY. SAID ELEVATION IS MARKED AS BEING 5876 FEET.

BASIS OF BEARINGS

BASIS OF BEARINGS IS A G.P.S. OBSERVATION.



CERTIFICATE
THIS IS TO CERTIFY THAT THE ABOVE PLAT WAS PREPARED FROM
FIELD NOTES OF ACTUAL SURVEYS MADE BY ME OR UNDER MY
SUPERVISION AND THAT THE SAME ARE TRUE AND CORRECT TO THE
BEST OF MY KNOWLEDGE AND BELIEF.

REGISTERED LAND SURVEYOR
REGISTRATION NO. 17298
STATE OF COLORADO

REVISED: 05-18-10

UINTAH ENGINEERING & LAND SURVEYING
85 SOUTH 200 EAST - VERNAL, UTAH 84078
(435) 789-1017

- LEGEND:
- = 90° SYMBOL
 - = PROPOSED WELL HEAD.
 - ▲ = SECTION CORNERS LOCATED.
 - △ = SECTION CORNERS RE-ESTABLISHED.
(Not Set on Ground)

(AUTONOMOUS) NAD 83 (TARGET BOTTOM HOLE)		
LATITUDE = 39°58'51.47" (39.980964)		
LONGITUDE = 109°01'50.98" (109.030828)		
(AUTONOMOUS) NAD 27 (TARGET BOTTOM HOLE)		
LATITUDE = 39°58'51.58" (39.980994)		
LONGITUDE = 109°01'48.58" (109.030161)		
SCALE	1" = 1000'	DATE SURVEYED: 09-15-08
PARTY	J.R. T.B. D.P.	DATE DRAWN: 09-18-08
WEATHER	WARM	REFERENCES
		G.L.O. PLAT
		FILE
		KGH OPERATING COMPANY