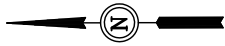


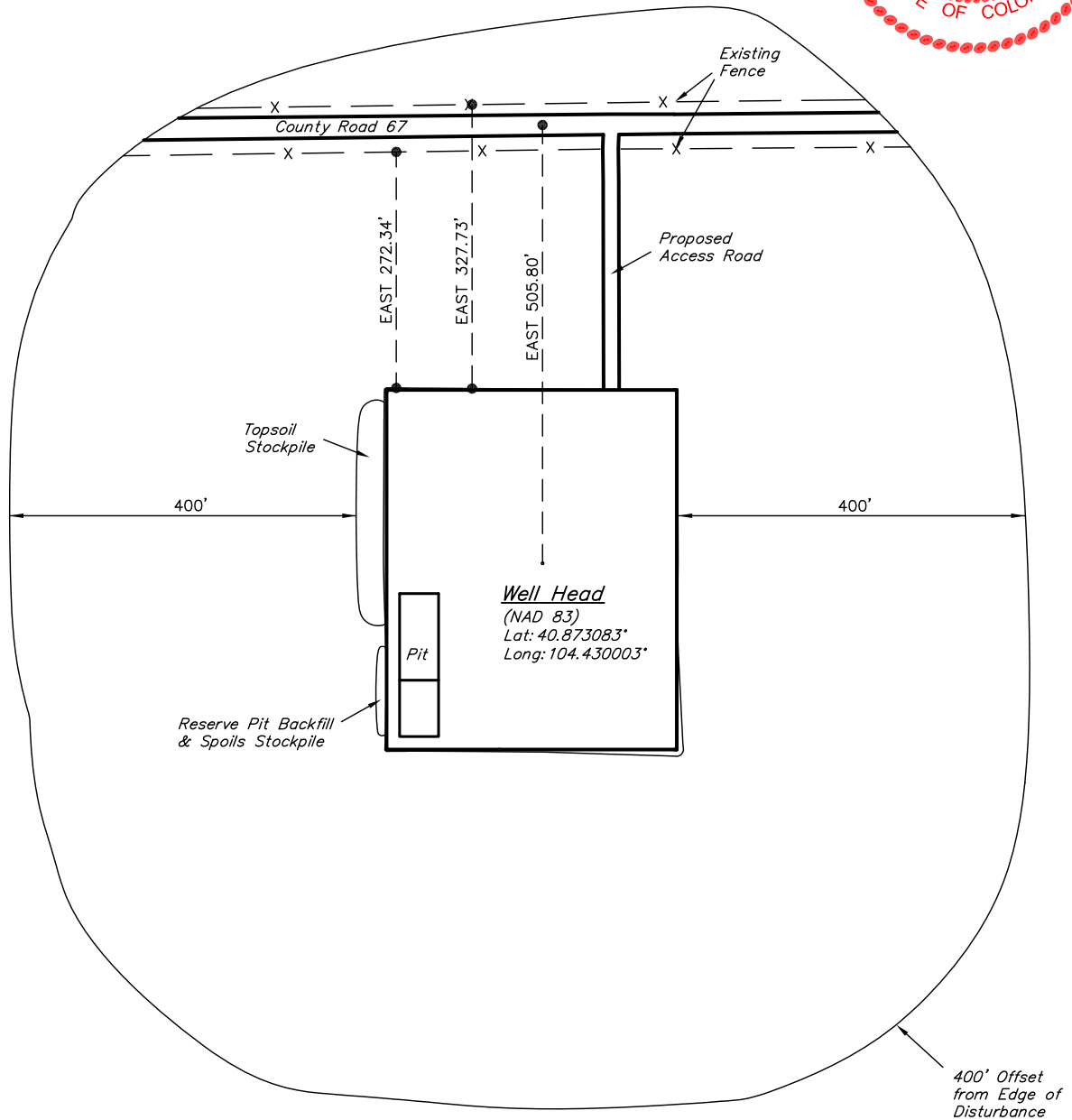
EOG RESOURCES, INC.

ADDENDUM TO LEGAL PLAT FOR

CRITTER CREEK #26-33H  
SECTION 33, T11N, R63W, 6th P.M.  
501' FSL 501' FEL



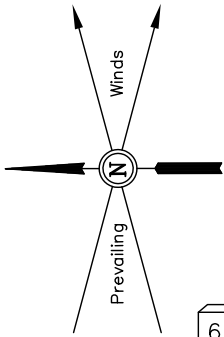
SCALE: 1" = 200'  
DATE: 10-13-10  
DRAWN BY: S.L.



EOG RESOURCES, INC.  
CONSTRUCTION LAYOUT FOR  
CRITTER CREEK #26-33H  
SECTION 33, T11N, R63W, 6th P.M.  
501' FSL 501' FEL

FIGURE #1

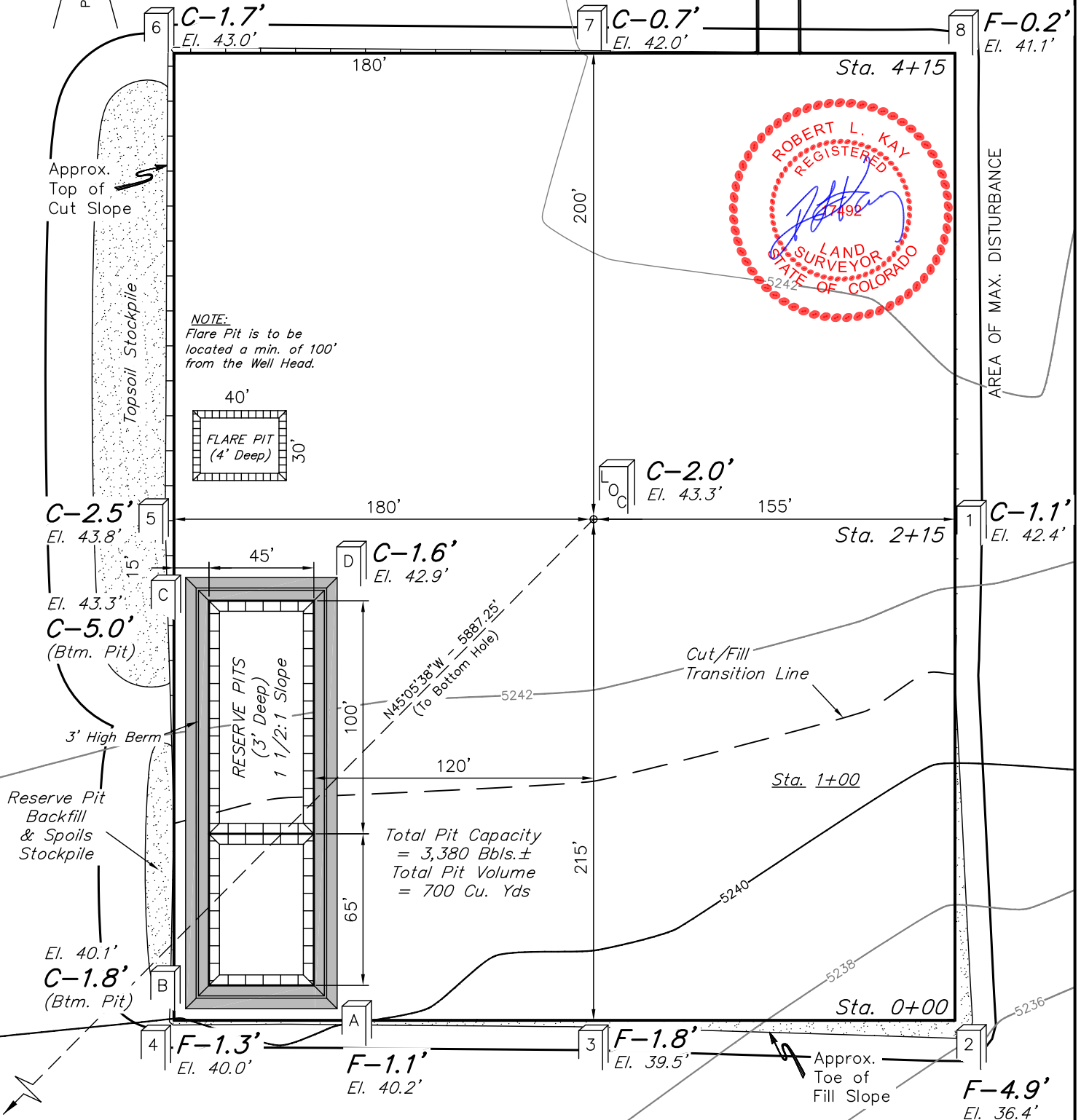
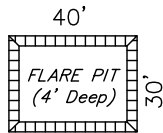
SCALE: 1" = 60'  
DATE: 10-13-10  
DRAWN BY: S.L.



Proposed  
Access Road

AREA OF MAX. DISTURBANCE

NOTE:  
Flare Pit is to be  
located a min. of 100'  
from the Well Head.



Elev. Ungraded Ground At Loc. Stake = 5243.3'  
FINISHED GRADE ELEV. AT LOC. STAKE = 5241.3'

UINTAH ENGINEERING & LAND SURVEYING  
85 So. 200 East \* Vernal, Utah 84078 \* (435) 789-1017

# EOG RESOURCES, INC.

## CONSTRUCTION LAYOUT CROSS SECTIONS FOR

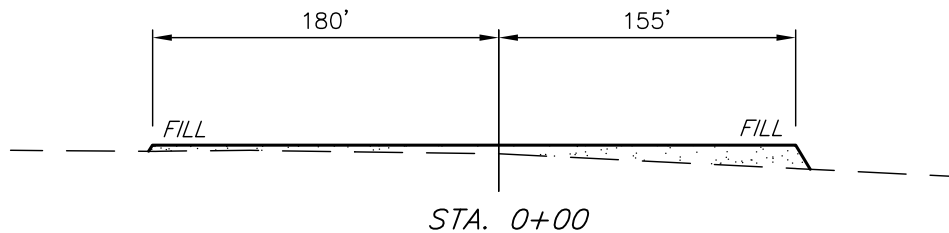
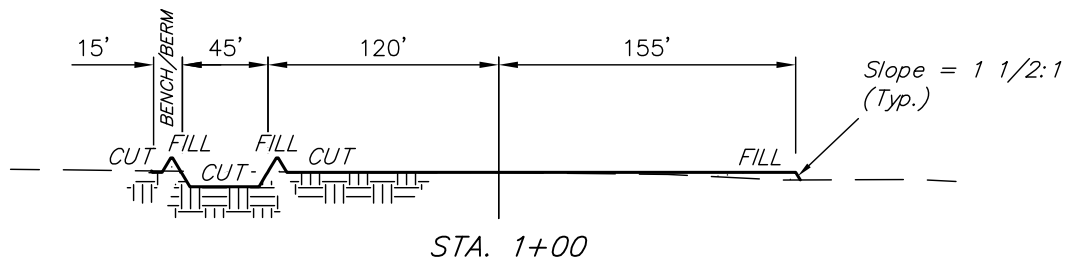
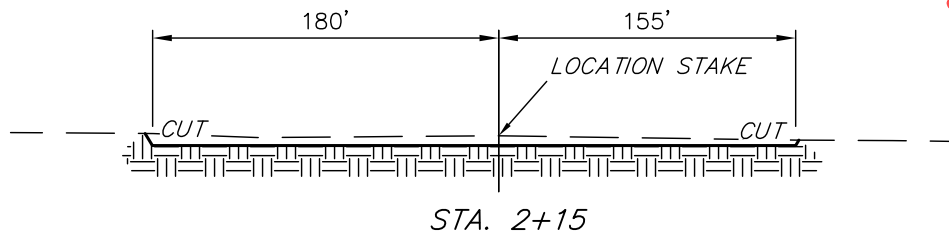
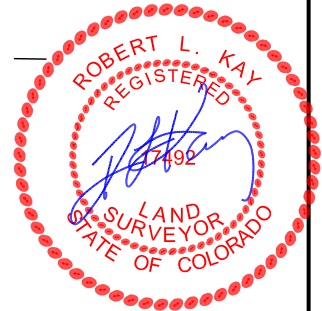
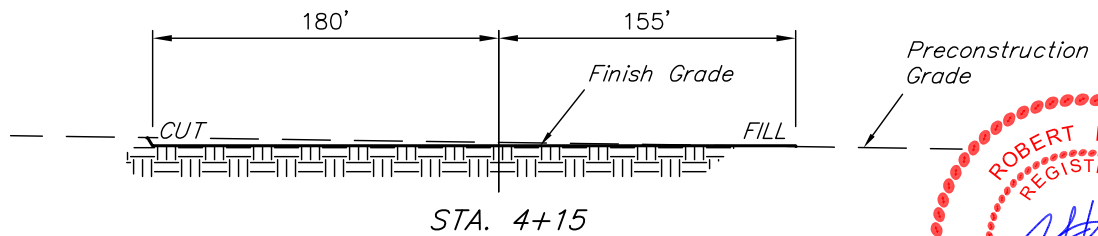
CRITTER CREEK #26-33H

SECTION 33, T11N, R63W, 6th P.M.

501' FSL 501' FEL

FIGURE #2

1" = 40'  
X-Section  
Scale  
1" = 100'  
DATE: 10-13-10  
DRAWN BY: S.L.



### NOTE:

Topsoil should not be Stripped Below Finished Grade on Substructure Area.

### APPROXIMATE ACREAGES

WELL SITE DISTURBANCE = ± 3.944 ACRES  
ACCESS ROAD DISTURBANCE = ± 0.199 ACRES  
TOTAL = ± 4.143 ACRES

\* NOTE:  
FILL QUANTITY INCLUDES 5% FOR COMPACTION

### APPROXIMATE YARDAGES

(6") Topsoil Stripping = 2,670 Cu. Yds.  
Remaining Location = 3,160 Cu. Yds.  
TOTAL CUT = 5,830 CU.YDS.  
FILL = 2,810 CU.YDS.

EXCESS MATERIAL = 3,020 Cu. Yds.  
Topsoil & Pit Backfill = 3,020 Cu. Yds.  
(1/2 Pit Vol.)  
EXCESS UNBALANCE = 0 Cu. Yds.  
(After Interim Rehabilitation)

UINTAH ENGINEERING & LAND SURVEYING  
85 So. 200 East \* Vernal, Utah 84078 \* (435) 789-1017

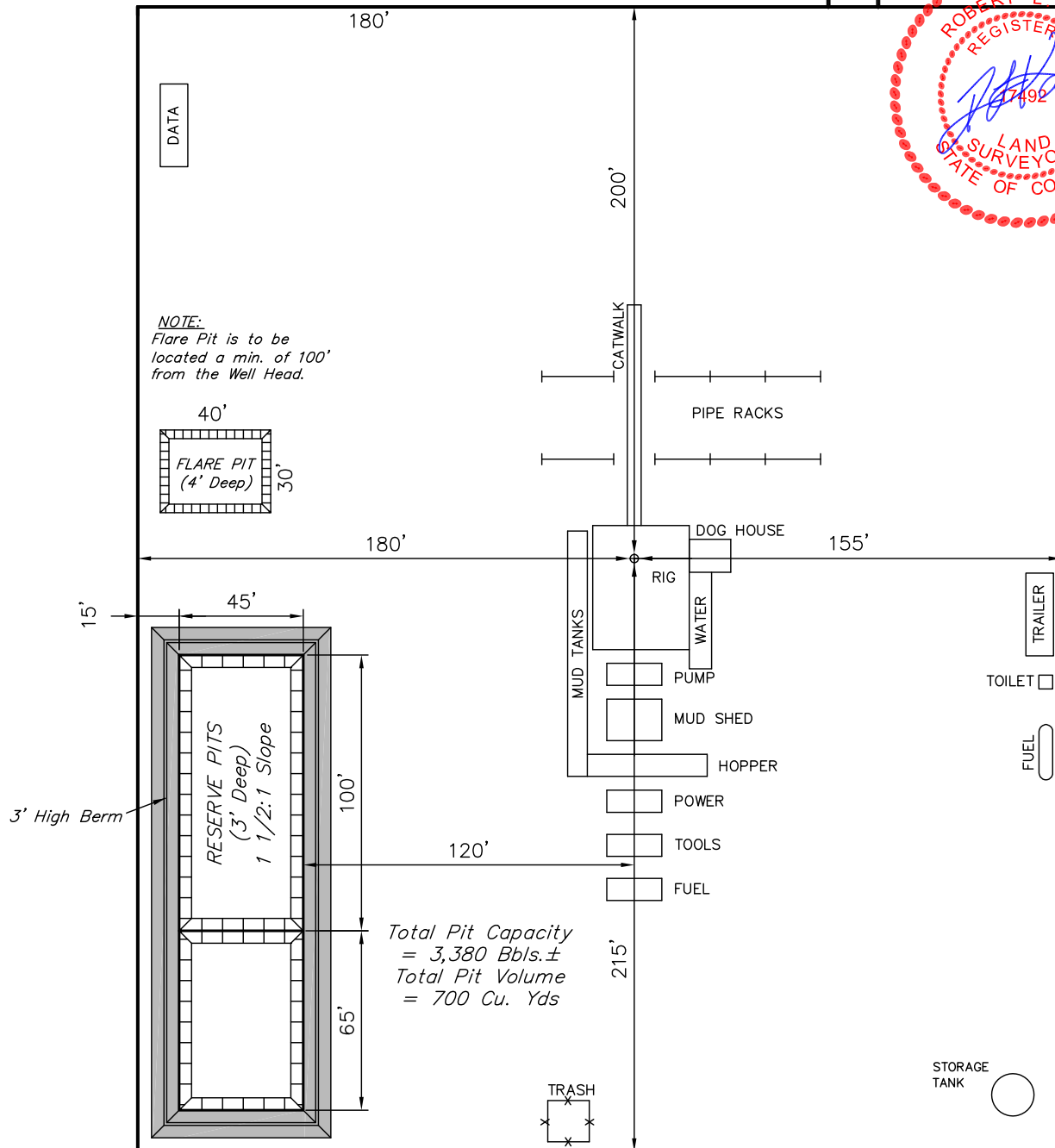
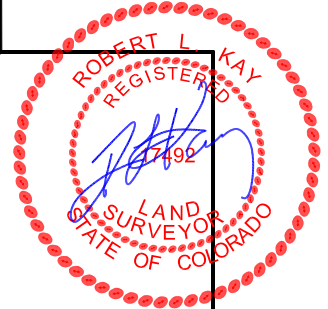
EOG RESOURCES, INC.  
 TYPICAL RIG LAYOUT FOR  
 CRITTER CREEK #26-33H  
 SECTION 33, T11N, R63W, 6th P.M.  
 501' FSL 501' FEL



FIGURE #3

SCALE: 1" = 60'  
 DATE: 10-13-10  
 DRAWN BY: S.L.

Proposed  
 Access Road

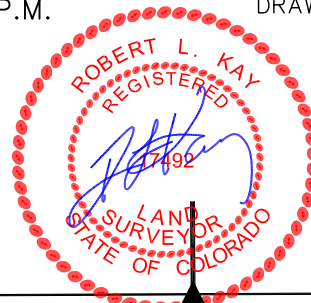
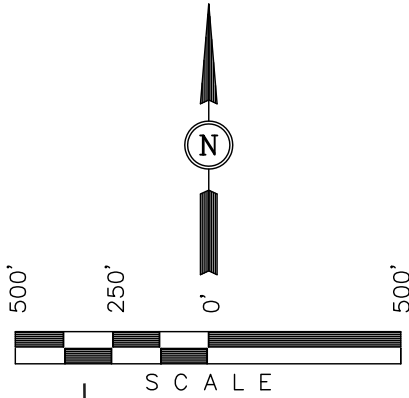


# EOG RESOURCES, INC.

LOCATION DRAWING FOR  
CRITTER CREEK #26-33H  
SECTION 33, T11N, R63W, 6th P.M.  
SE 1/4 SE 1/4

FIGURE #5

SCALE: 1" = 500'  
DATE: 10-13-10  
DRAWN BY: S.L.

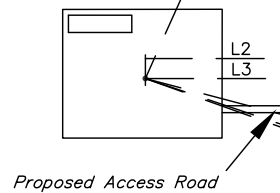


LINE TABLE		
LINE	DIRECTION	LENGTH
L1	N24°05'46"E	22.4 Miles (To Railroad)
L2	EAST	493.34' (To Coutny Road 67)
L3	EAST	500.78' (To Property Line)
L4	S75°13'21"E	2638.70' (To Building)
L5	S71°23'40"E	2507.49' (To Water Well)
L6	S70°14'03"E	1870.54' (To Power Line)

1921 Brass Cap  
0.5' Below Road  
Lat: 40.878953°  
Long: 104.428250°

*Kenyon K.  
Ayars  
Lands*

County Road 67



Section Line

L1  
N00°23'09"W - 2636.94' (Meas.)

T11N

Section Line

T10N

1921 Brass Cap 1.0'  
Below, E-W Fenceline  
Lat: 40.871678°  
Long: 104.437672°

S89°43'32"W - 2625.83' (Meas.)

2010 Alum. Cap  
0.5' Below Road,  
PLS #17492  
Lat: 40.871717°  
Long: 104.428181°