



CEMENT BOND LOG

Mesa Wireline

Company ENCANA OIL & GAS (USA) INC.

Well TWIN CREEK #1-14A1

Field O1E

County GARFIELD State COLORADO

Location: API #: 0504517684

1274 FSL & 2476 FEL

LAT/LONG 39.472578/107.61465

SEC. 1 TWP. 7S RGE. 92W

Other Services
NONE

Permanent Datum GROUND LEVEL Elevation 6080'

Log Measured From KELLY BUSHING = 16'

Drilling Measured From KELLY BUSHING

Elevation
K.B. 6096
D.F. 6095
G.L. 6080

Date 3/17/2009

Run Number ONE

Depth Driller 1013

Depth Logger 960

Bottom Logged Interval 960

Top Log Interval SURFACE

Open Hole Size 12.25"

Type Fluid WATER

Density / Viscosity 8.3#

Max. Recorded Temp. 90 DEG F

Estimated Cement Top 225

Time Well Ready N/A

Time Logger on Bottom N/A

Equipment Number 054003

Location GRAND JUNCTION

Recorded By C.P. ACE

Witnessed By D.HUNT

Borehole Record

Run Number Bit From To Size Weight From To

ONE 24" 0 40 1013

TWO 12.25" 40 1013

Casing Record Size Wd/Lft Top Bottom

Surface String 9.625" 36# 0 1003

Prot. String

Production String

Liner

<<< Fold Here >>>

All interpretations are opinions based on inferences from electrical or other measurements and we cannot and do not guarantee the accuracy or correctness of any interpretation, and we shall not, except in the case of gross or willful negligence on our part, be liable or responsible for any loss, costs, damages, or expenses incurred or sustained by anyone resulting from any interpretation made by any of our officers, agents or employees. These interpretations are also subject to our general terms and conditions set out in our current Price Schedule.

Comments

RBT-GR-TEMP RAN IN COMBINATION.
NO LOGS AVAILABLE TO CORRELATE WITH.

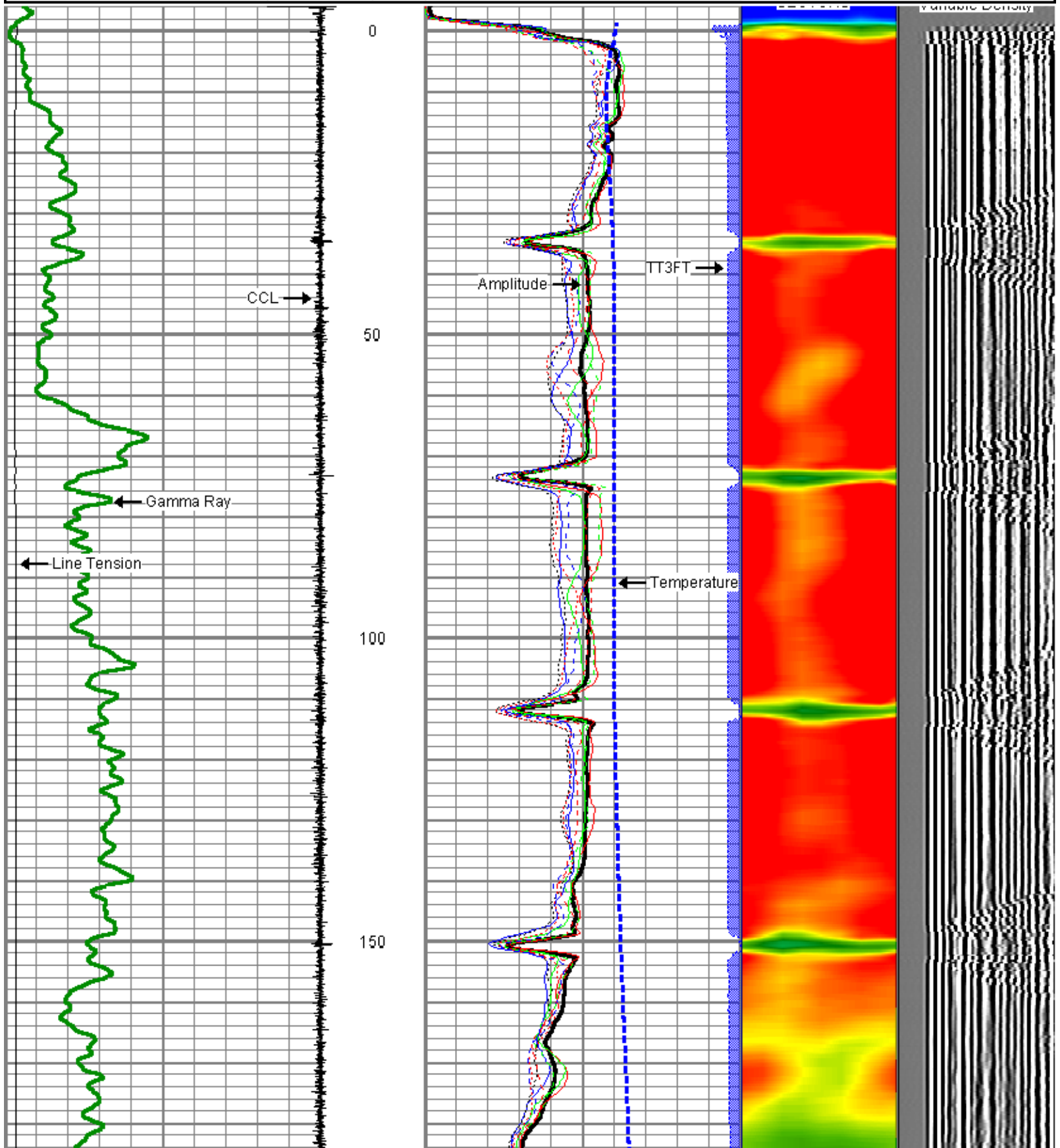
WE APPRECIATE YOUR BUSINESS, MESA WIRELINE LLC, GRAND JUNCTION CO. (970) 257-0

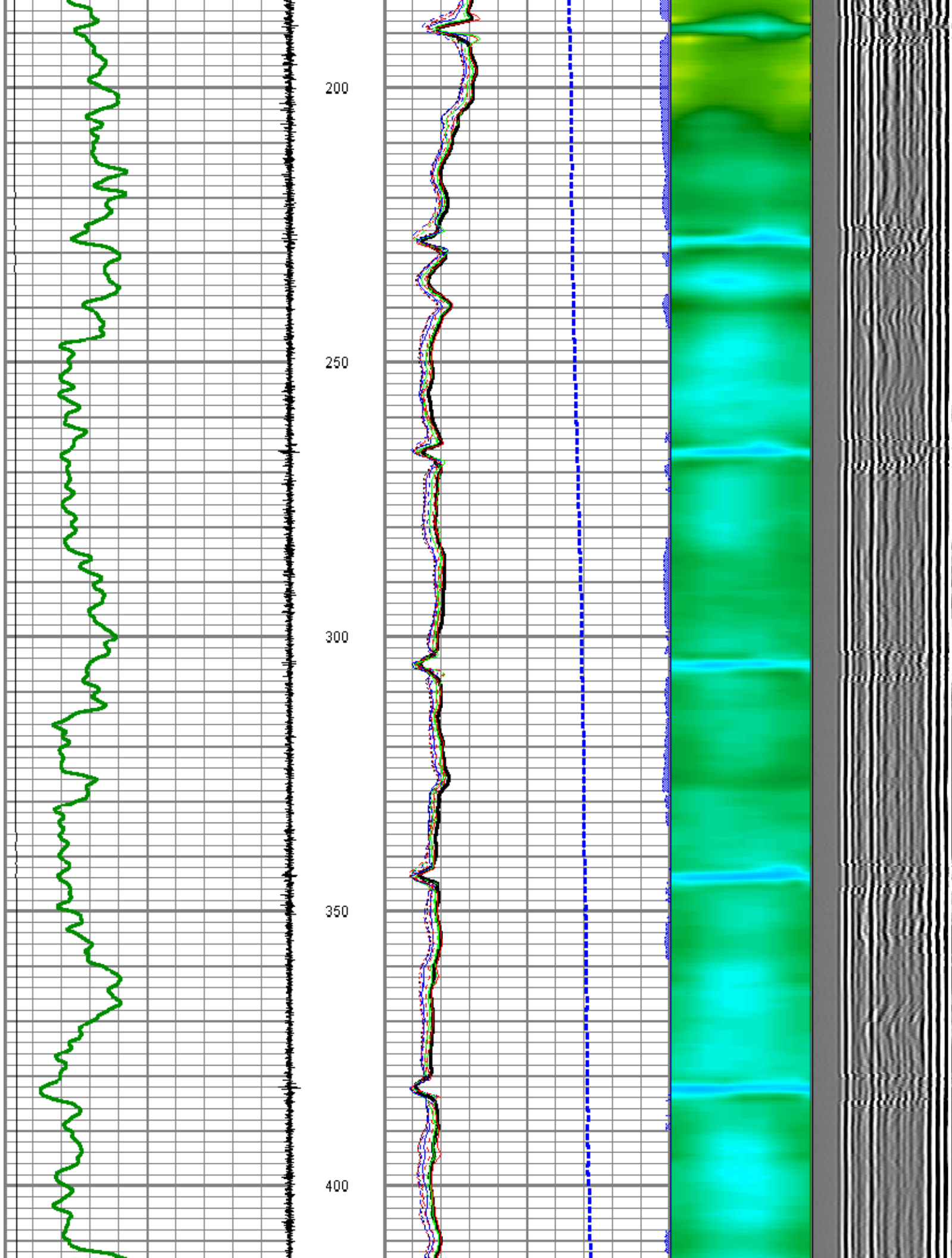


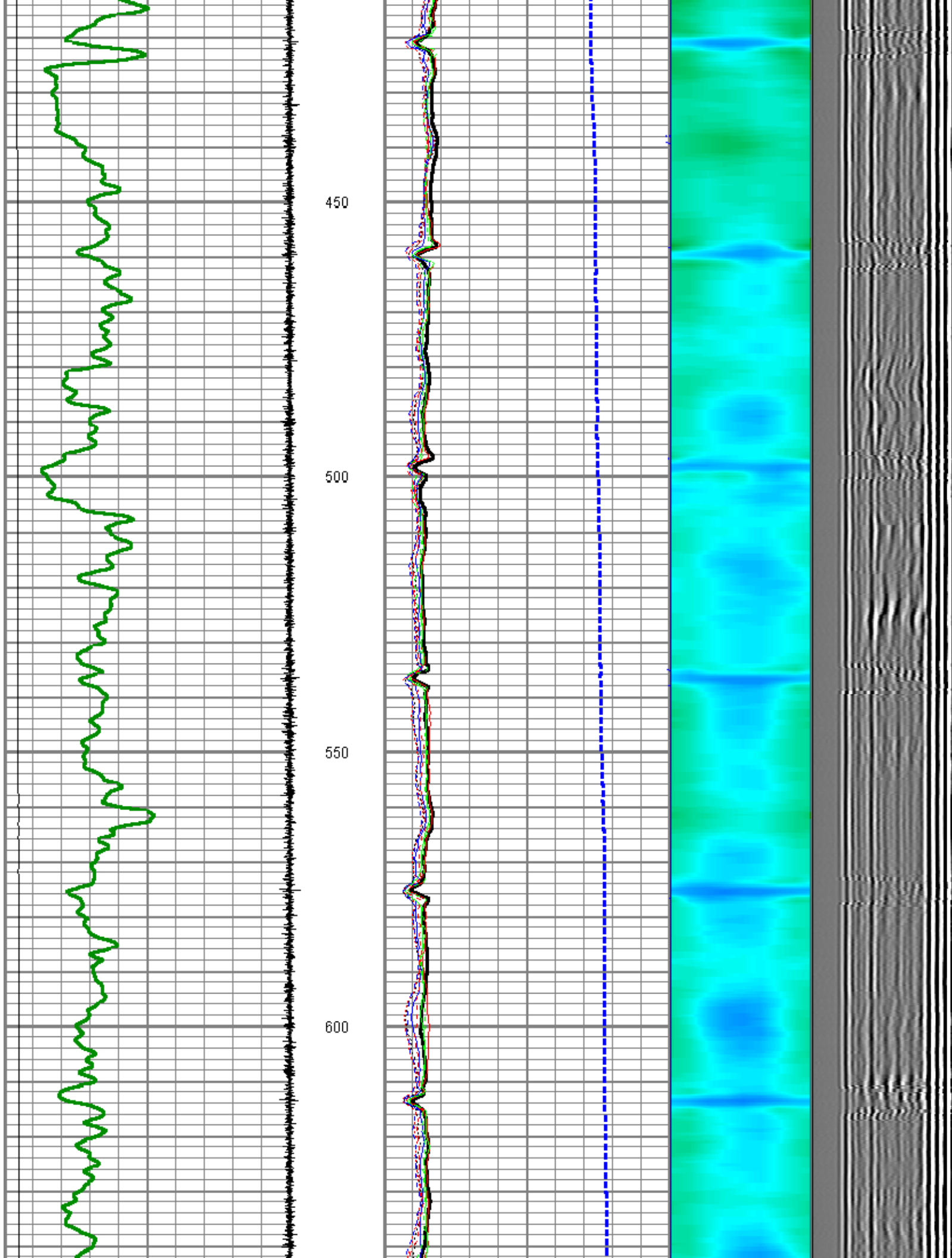
MAIN LOG SECTION

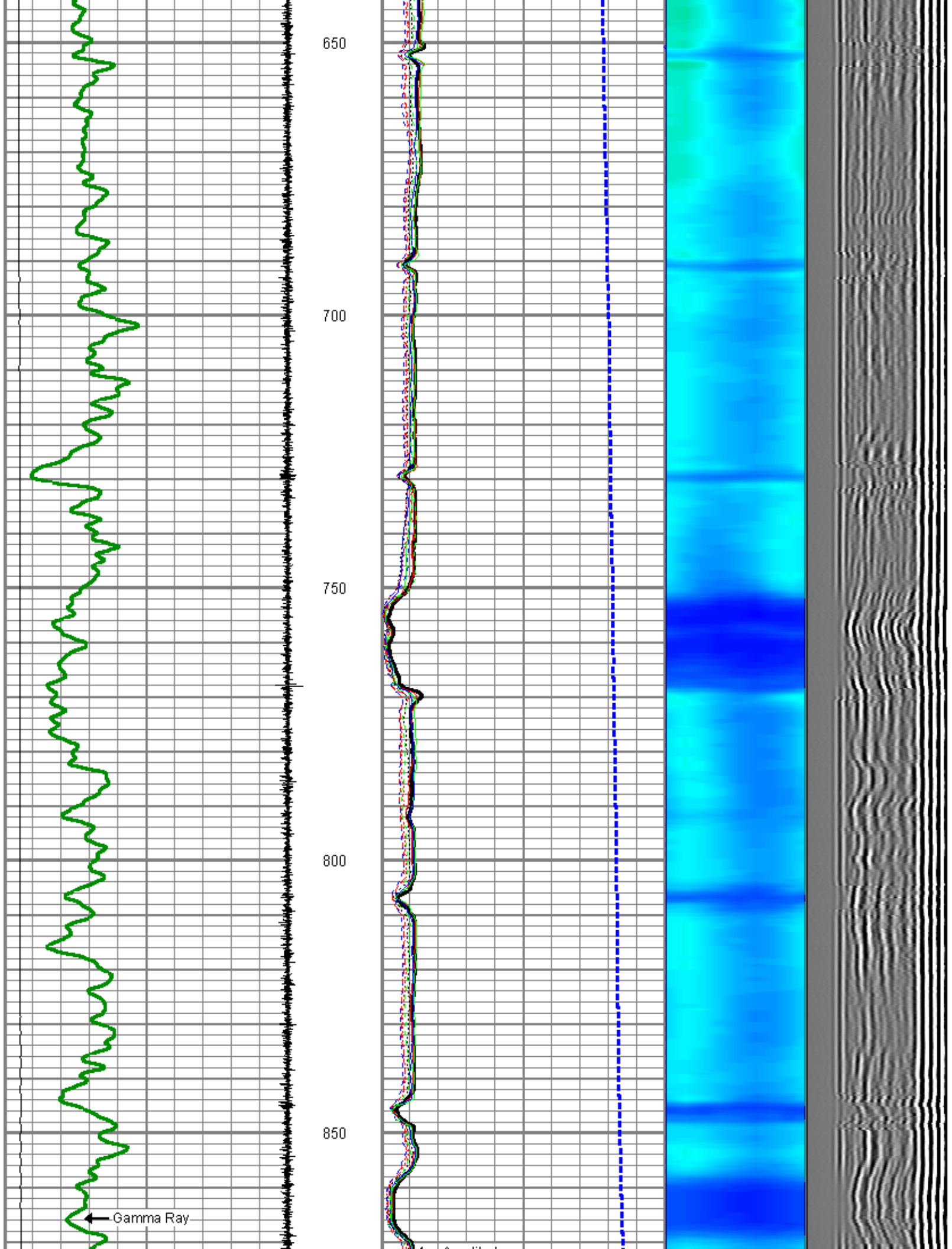
Database File: twincreek114a.db
 Dataset Pathname: pass4
 Presentation Format: rbt_fin
 Dataset Creation: Tue Mar 17 13:36:39 2009 by Log Std Casedhole 08121
 Charted by: Depth in Feet scaled 1:240

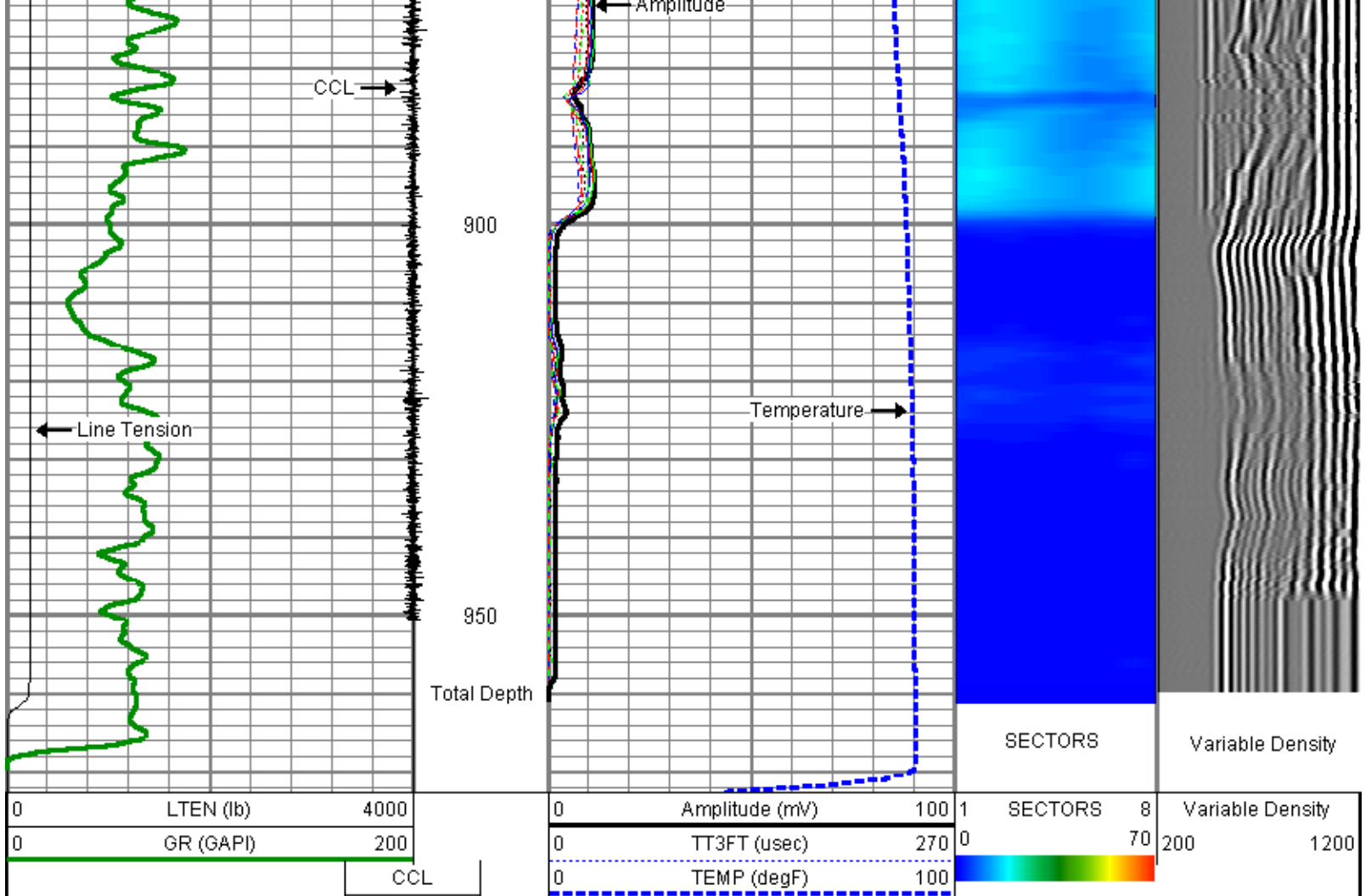
0	LTEN (lb)	4000	0	Amplitude (mV)	100	1	SECTORS	8	Variable Density
0	GR (GAPI)	200	0	TT3FT (usec)	270	0		70	200 1200
		CCL	0	TEMP (degF)	100				



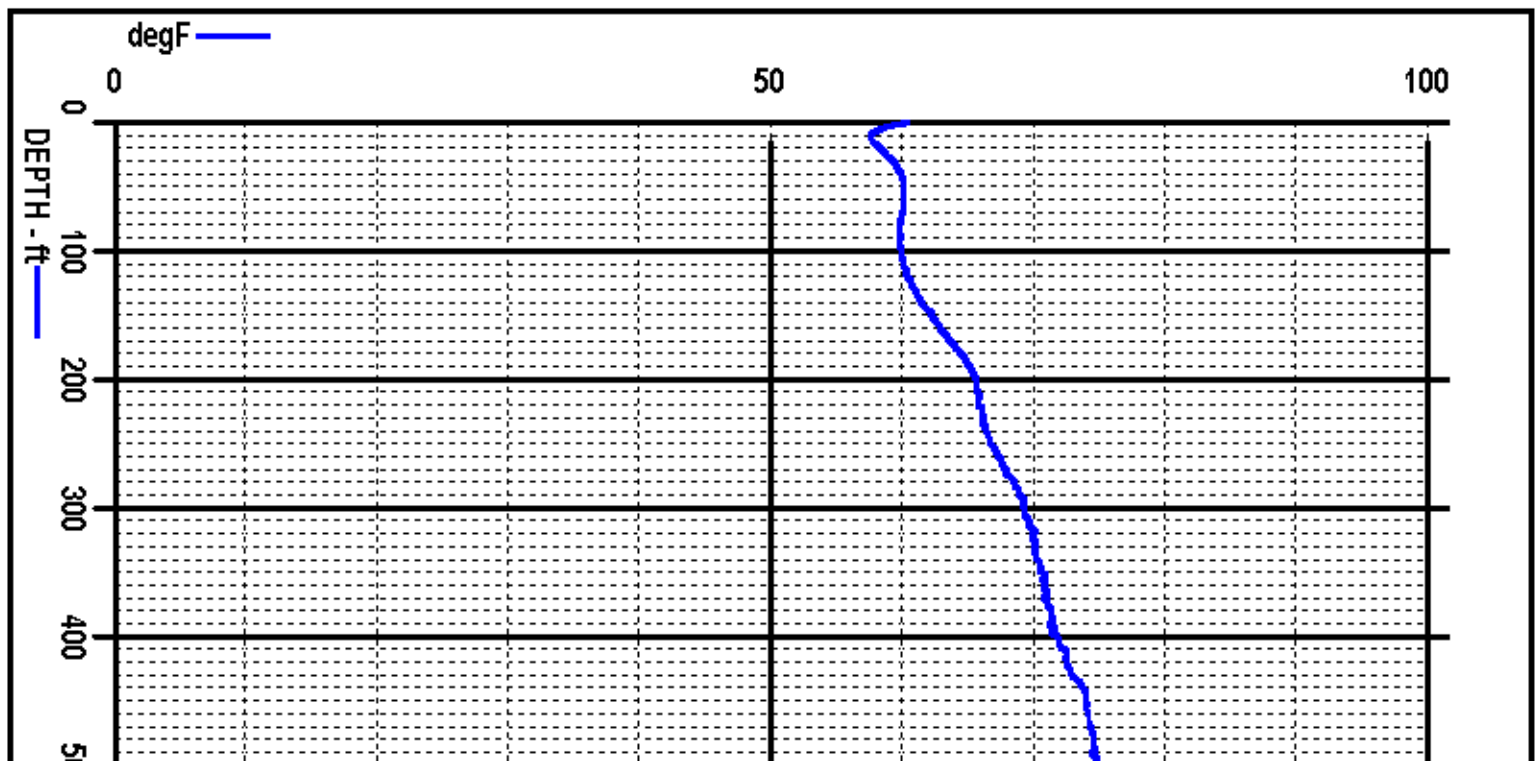


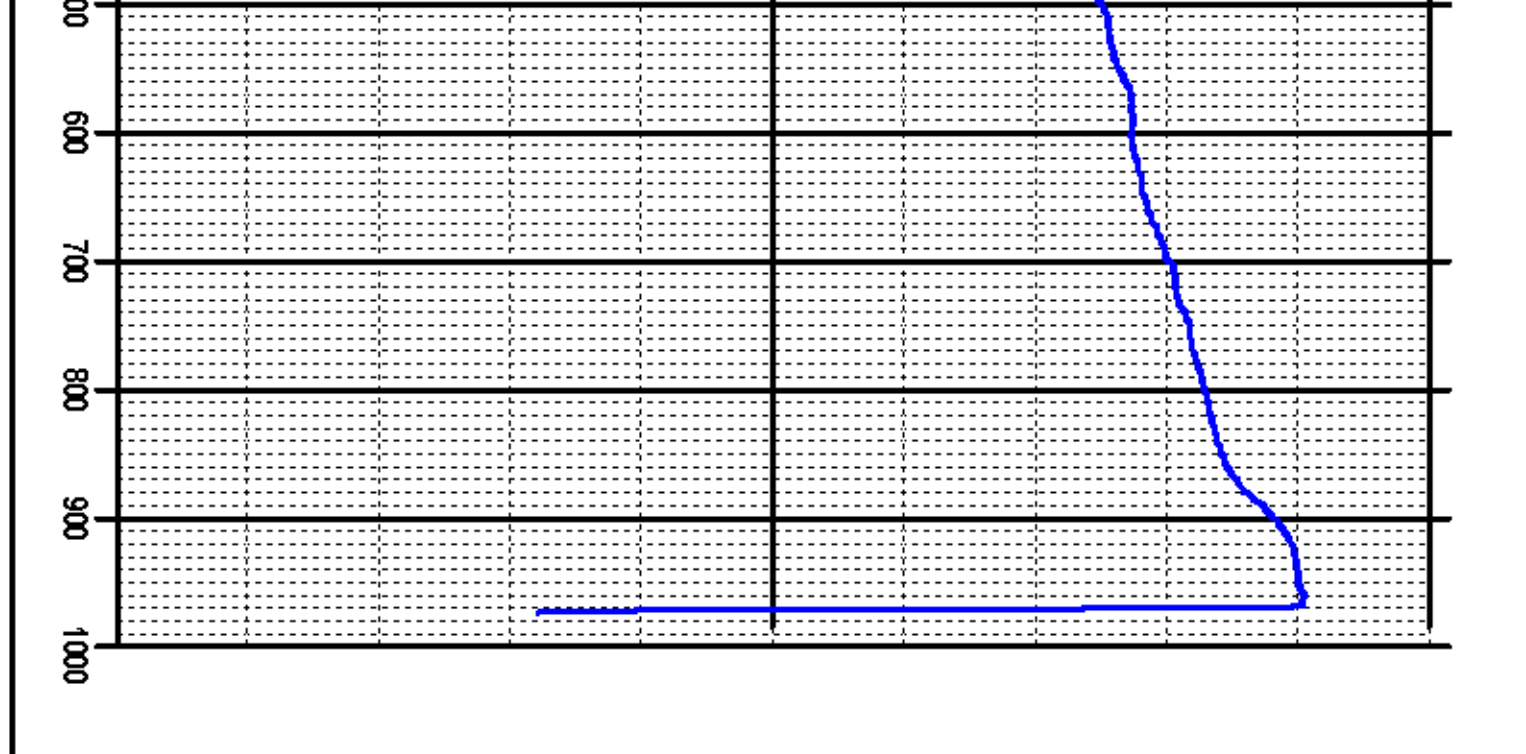


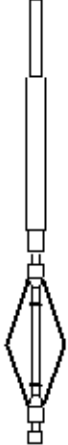







TEMPERATURE PLOT





Sensor	Offset (ft)	Schematic	Description	Len (ft)	OD (in)	Wt (lb)
CCL	21.68		TITAN	1.02	1.44	1.00
			SNDX_CCL-SNDX_3_13_CCL (000001) CSS Gamma Ray/CCL (CCL Section)	1.92	3.13	11.02
			SONDEX	2.71	2.75	32.00
WVFS1	13.92		SNDX_RBT-007 (000002) Radial Bond Tool - Analog 3 1/8	9.47	3.13	140.00
WVFS2	13.92					
WVFS3	13.92					
WVFS4	13.92					
WVFS5	13.92					
WVFS6	13.92					
WVFS7	13.92					
WVFS8	13.92					
WVFS5FT	12.92					
WVFS3FT	13.92					

GR	5.17		SONDEX	2.71	2.75	32.00
			SNDX_GR-SNDX_3_13_GR (000001) Sondex Production Gamma Ray	2.94	3.13	22.05
			TEMP-SNDX_TEMP (SNDX_TEMP_02) Sondex Production Temperature Tool	3.14	1.63	10.00
TEMP	0.58					
Dataset: twincreek114a.db: field/well/run1/pass4 Total Length: 23.90 ft Total Weight: 248.07 lb O.D. 3.13 in						

	Company	ENCANA OIL & GAS (USA) INC.
	Well	TWIN CREEK #1-14A1
	Field	O1E
	County	GARFIELD
	State	COLORADO