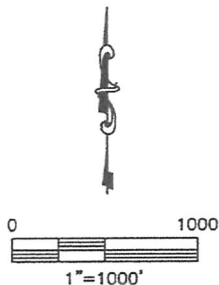
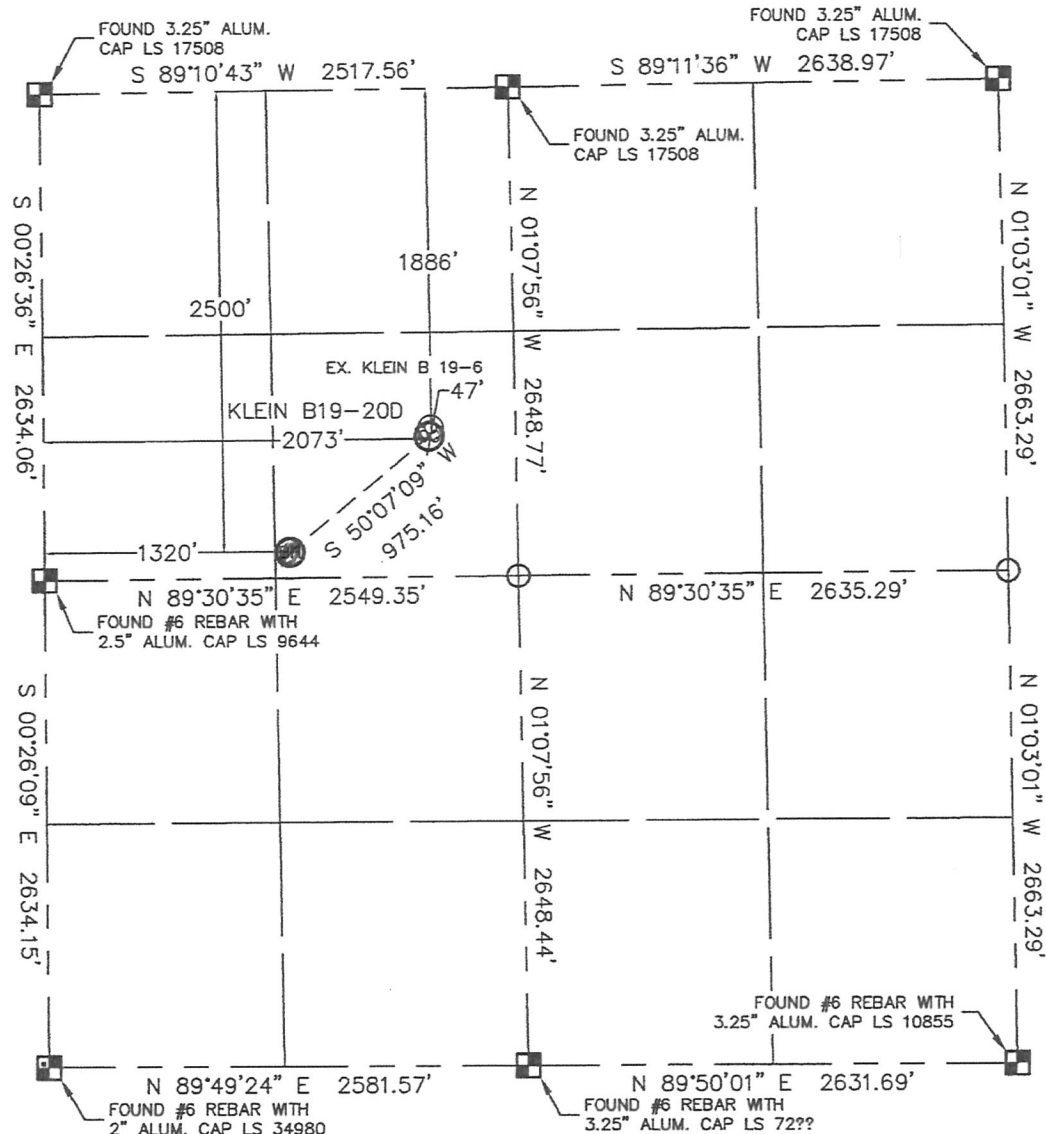


# WELL LOCATION CERTIFICATE

THIS MAP DOES NOT REPRESENT A BOUNDARY SURVEY

SECTION: 19  
TOWNSHIP: 5N  
RANGE: 64W



In accordance with a request from Matt Campbell with Noble Energy Inc., Lat40°, LLC has determined the surface location of the KLEIN B19-200 to be 1886' from the NORTH line and 2073' from the WEST line and the bottom hole to be 2500' from the NORTH line and 1320' from the WEST line as measured at right angles from the section line of Section 19, Township 5 North, Range 64 West of the Sixth Principal Meridian, County of Weld, State of Colorado.

I hereby state that this Well Location Certificate was prepared by me, or under my direct supervision, that the fieldwork was completed on 6/1/10, for and on behalf of Noble Energy Inc.. That this is not a Land Survey Plat or an Improvement Survey Plat, and that it is not to be relied upon for establishment of fence, building, or other future improvement lines.

**NOTE:**

- 1) Bearings shown are Grid Bearings of the Colorado State Plane Coordinate System, North Zone, North American Datum 1983/2007. The lineal dimensions as contained herein are based upon the "U.S. Survey Foot."
- 2) Ground elevations are based on an observed GPS elevation (NAVD 1988 DATUM).
- 3) NEAREST EXISTING WELL: KLEIN B 19-6 47'
- 4) IMPROVEMENTS: See VISIBLE IMPROVEMENTS exhibit for all visible improvements within 400' of disturbed area.
- 5) SURFACE USE: CROP DRYLAND, EX. WELL SITE

**SURFACE LOCATION**  
LATITUDE: 40.38670°N  
LONGITUDE: 104.59446°W  
PDOP: 1.5  
ELEV: 4628  
1/4, 1/4: SE1/4NW1/4  
NEAREST PROPERTY LINE: 467' EAST

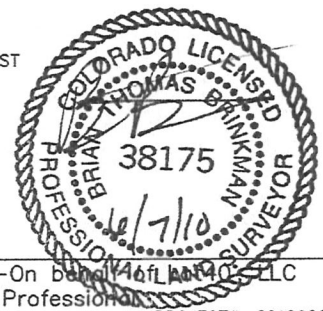
**BOTTOM HOLE**  
LATITUDE: 40.38500°N  
LONGITUDE: 104.59717°W

**NOTE**

According to Colorado law, you must commence any legal action based upon any defect in this W.L.C. within three years after you discover such defect. In no event, may any action based upon any defect in this survey be commenced more than ten years after the date of the certificate shown hereon. (13-80-105 C.R.S.)

## LEGEND

- = ALIQUOT MONUMENT AS DESCRIBED
- = CALCULATED POSITION

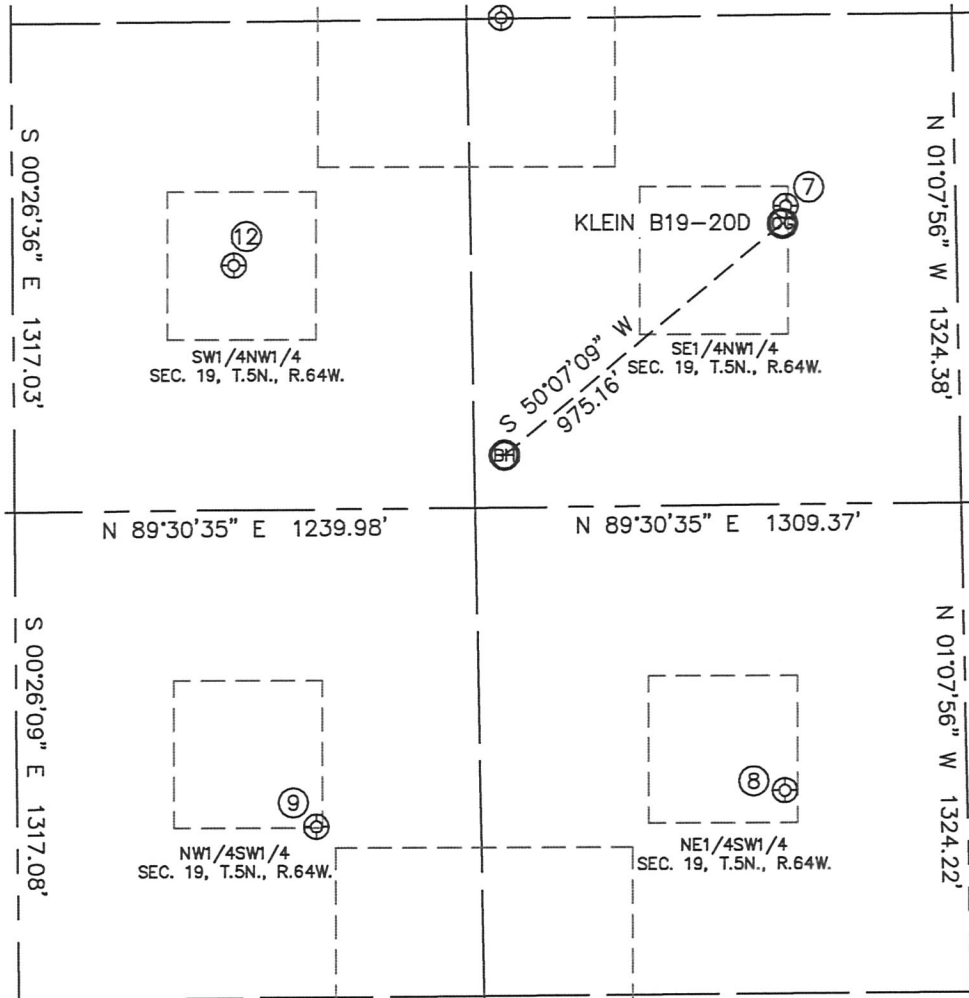


Brian T. Brinkman—On behalf of Lat40°, LLC  
Colorado Licensed Professional  
Land Surveyor No. 38175

PROJECT#: 2010026

# SITE SKETCH

SECTION: 19  
TOWNSHIP: 5N  
RANGE: 64W



⑦  
KLEIN B 19-6  
SE1/4NW1/4  
1839' FNL  
2082' FWL  
LAT-40.38682°N  
LONG-104.59443°W  
PDOP: 1.2  
ELEV: 4628

⑧  
EMILY #1  
NE1/4SW1/4  
1871' FSL  
2068' FWL  
LAT-40.38248°N  
LONG-104.59449°W  
PDOP: 1.4  
ELEV: 4628

⑨  
MAXEY HOFF #2  
NW1/4SW1/4  
1781' FSL  
805' FWL  
LAT-40.38226°N  
LONG-104.59902°W  
PDOP: 1.6  
ELEV: 4631

⑫  
KLEIN 1-19-5-64  
SW1/4NW1/4  
1977' FNL  
596' FWL  
LAT-40.38643°N  
LONG-104.59976°W  
PDOP: 2.9  
ELEV: 4632

