

---

# **BILL BARRETT CORPORATION E-BILL**

---

**DOMMER 32A-26-692  
MAMM CREEK  
Garfield County , Colorado**

**Squeeze Perfs**  
**26-Mar-2010**

**Post Job Report**

## The Road to Excellence Starts with Safety

Sold To #: 343492	Ship To #: 2735705	Quote #:	Sales Order #: 7252580
Customer: BILL BARRETT CORPORATION E-BILL	Customer Rep: HARTNET, JACK		
Well Name: DOMMER	Well #: 32A-26-692	API/UWI #: 05-045-17421	
Field: MAMM CREEK	City (SAP): SILT	County/Parish: Garfield	State: Colorado
Lat: N 39.498 deg. OR N 39 deg. 29 min. 51.216 secs.	Long: W 107.633 deg. OR W -108 deg. 22 min. 0.552 secs.		
Contractor: WORKOVER	Rig/Platform Name/Num: WORKOVER		
Job Purpose: Squeeze Perfs			
Well Type: Development Well	Job Type: Squeeze Perfs		
Sales Person: METLI, MARSHALL	Srv Supervisor: LEIST, JAMES	MBU ID Emp #: 362787	

## Job Personnel

HES Emp Name	Exp Hrs	Emp #	HES Emp Name	Exp Hrs	Emp #	HES Emp Name	Exp Hrs	Emp #
BARKER, RYAN	3	458751	CHASTAIN, DERICK Allan	3	455848	JAMISON, PRICE W	3	229155
JENSEN, SHANE Lynn	3	441759	LEIST, JAMES R	3	362787	ZUMWALT, ORVILLE Raymond	3	398157

## Equipment

HES Unit #	Distance-1 way	HES Unit #	Distance-1 way	HES Unit #	Distance-1 way	HES Unit #	Distance-1 way
10001431	240 mile	10248065	240 mile	10296152C	240 mile	10724643	240 mile
10822535	240 mile	10897797	240 mile	11259882	240 mile		

## Job Hours

Date	On Location Hours	Operating Hours	Date	On Location Hours	Operating Hours	Date	On Location Hours	Operating Hours
3-26-10	3	2						

TOTAL	Total is the sum of each column separately							
-------	--	--	--	--	--	--	--	--

## Job

Formation Name	Top	Bottom	Called Out	Date	Time	Time Zone
Formation Depth (MD)			On Location	26 - Mar - 2010	08:00	MST
Form Type		BHST	Job Started	26 - Mar - 2010	09:32	MST
Job depth MD	5980. ft	Job Depth TVD	5980. ft	Job Completed	26 - Mar - 2010	10:56
Water Depth		Wk Ht Above Floor	4. ft	Departed Loc	26 - Mar - 2010	13:30
Perforation Depth (MD)	From	To				

## Well Data

Description	New / Used	Max pressure psig	Size in	ID in	Weight lbm/ft	Thread	Grade	Top MD ft	Bottom MD ft	Top TVD ft	Bottom TVD ft
-------------	------------	-------------------	---------	-------	---------------	--------	-------	-----------	--------------	------------	---------------

## Tools and Accessories

Type	Size	Qty	Make	Depth	Type	Size	Qty	Make	Depth	Type	Size	Qty	Make
Guide Shoe					Packer					Top Plug			
Float Shoe					Bridge Plug					Bottom Plug			
Float Collar					Retainer					SSR plug set			
Insert Float										Plug Container			
Stage Tool										Centralizers			

## Miscellaneous Materials

Gelling Agt		Conc		Surfactant		Conc		Acid Type		Qty		Conc	%
Treatment Fld		Conc		Inhibitor		Conc		Sand Type		Size		Qty	

## Fluid Data

Stage/Plug #: 1													
Fluid #	Stage Type	Fluid Name	Qty	Qty uom	Mixing Density lbm/gal	Yield ft3/sk	Mix Fluid Gal/sk	Rate bbl/min	Total Mix Fluid Gal/sk				

Stage/Plug #: 1									
Fluid #	Stage Type	Fluid Name	Qty	Qty uom	Mixing Density lbm/gal	Yield ft <sup>3</sup> /sk	Mix Fluid Gal/sk	Rate bbl/min	Total Mix Fluid Gal/sk
1	WATER SPACER		10.00	bbl	8.33	.0	.0	.0	
2	MUD FLUSH III	MUD FLUSH III - SBM (528788)	20.00	bbl	8.4	.0	.0	.0	
3	WATER SPACER		10.00	bbl	8.33	.0	.0	.0	
4	SUPER FLUSH 101	SUPER FLUSH 101 - SBM (12199)	30.00	bbl	10.	.0	.0	.0	
5	WATER SPACER		10.00	bbl	8.33	.0	.0	.0	
6	Lead Cement	HALCEM (TM) SYSTEM (452986)	315.0	sacks	13.	1.47	7.08		7.08
7	Tail Cement	HALCEM (TM) SYSTEM (452986)	50.0	sacks	15.8	1.15	4.96		4.96
8	DISPLACEMENT		22.00	bbl	.	.0	.0	.0	
Calculated Values		Pressures		Volumes					
Displacement	22.6	Shut In: Instant		Lost Returns		Cement Slurry	92.7	Pad	
Top Of Cement	4361	5 Min		Cement Returns		Actual Displacement	22.1	Treatment	
Frac Gradient		15 Min		Spacers	100	Load and Breakdown		Total Job	
Rates									
Circulating		Mixing	3	Displacement	4	Avg. Job			3.5
Cement Left In Pipe	Amount	0 ft	Reason	Shoe Joint					
Frac Ring # 1 @	ID	Frac ring # 2 @	ID	Frac Ring # 3 @	ID	Frac Ring # 4 @	ID		
The Information Stated Herein Is Correct				Customer Representative Signature					

*The Road to Excellence Starts with Safety*

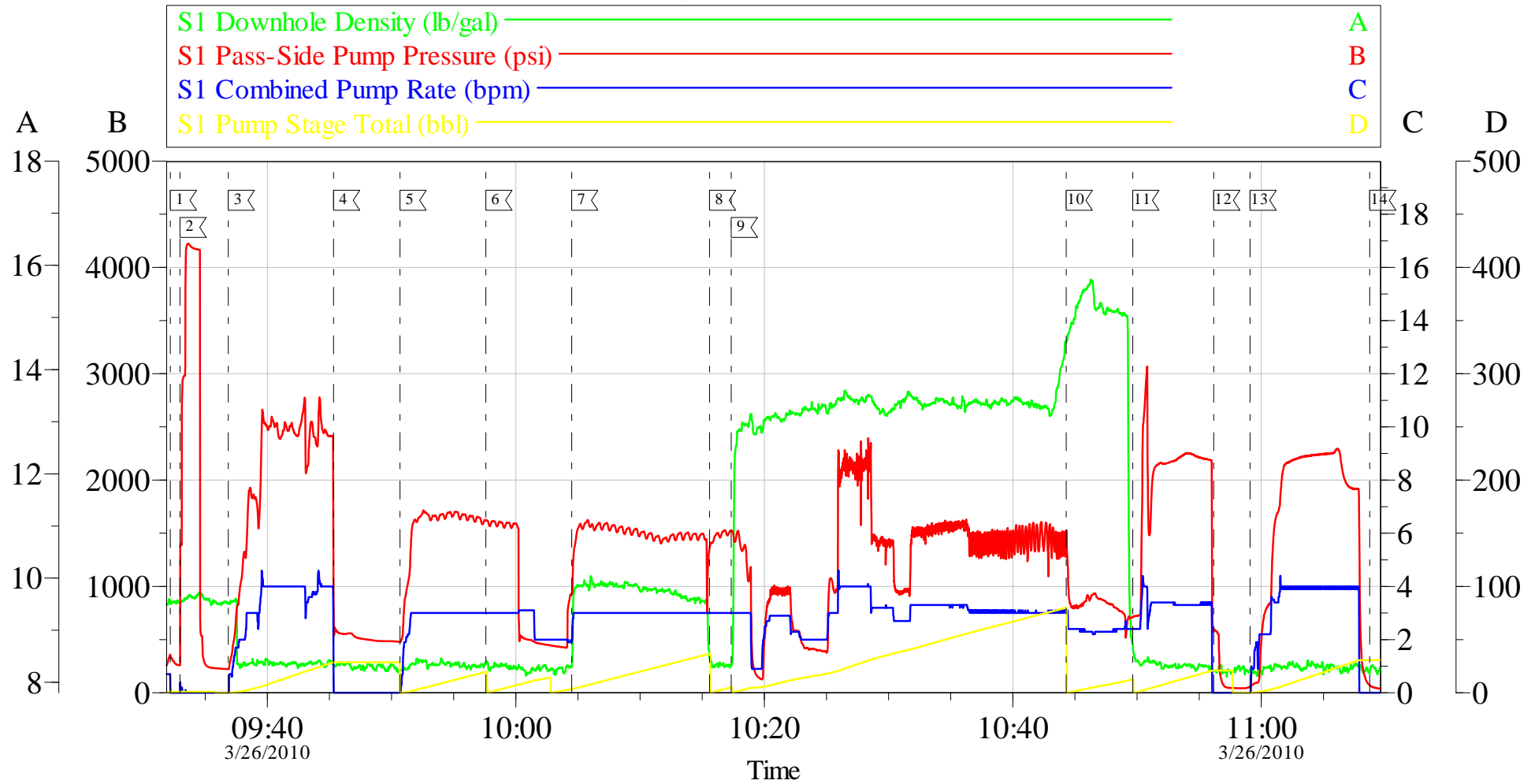
<b>Sold To #:</b> 343492	<b>Ship To #:</b> 2735705	<b>Quote #:</b>	<b>Sales Order #:</b> 7252580
<b>Customer:</b> BILL BARRETT CORPORATION E-BILL		<b>Customer Rep:</b> HARTNET, JACK	
<b>Well Name:</b> DOMMER	<b>Well #:</b> 32A-26-692	<b>API/UWI #:</b> 05-045-17421	
<b>Field:</b> MAMM CREEK	<b>City (SAP):</b> SILT	<b>County/Parish:</b> Garfield	<b>State:</b> Colorado
<b>Legal Description:</b>			
<b>Lat:</b> N 39.498 deg. OR N 39 deg. 29 min. 51.216 secs.		<b>Long:</b> W 107.633 deg. OR W -108 deg. 22 min. 0.552 secs.	
<b>Contractor:</b> WORKOVER		<b>Rig/Platform Name/Num:</b> WORKOVER	
<b>Job Purpose:</b> Squeeze Perfs			<b>Ticket Amount:</b>
<b>Well Type:</b> Development Well		<b>Job Type:</b> Squeeze Perfs	
<b>Sales Person:</b> METLI, MARSHALL		<b>Srv Supervisor:</b> LEIST, JAMES	<b>MBU ID Emp #:</b> 362787

Activity Description	Date/Time	Cht #	Rate bbl/ min	Volume bbl		Pressure psig		Comments
				Stage	Total	Tubing	Casing	
Call Out	03/26/2010 04:00							TUBING- 2 3/8 , 4.7#, J-55, CASING- 4 1/2 PRODUCTION, 11.6#, CIVP SET AT 6110 FT., RETAINER SET AT 5852, PERFS- 5979 TO 5980
Pre-Convoy Safety Meeting	03/26/2010 05:30							WITH ALL HES PERSONNEL
Crew Leave Yard	03/26/2010 05:45							
Arrive At Loc	03/26/2010 08:00							
Assessment Of Location Safety Meeting	03/26/2010 08:05							WITH ALL HES PERSONNEL
Pre-Rig Up Safety Meeting	03/26/2010 08:10							WITH ALL HES PERSONNEL
Rig-Up Completed	03/26/2010 09:20							
Pre-Job Safety Meeting	03/26/2010 09:21							WITH ALL ON LOCATION PERSONNEL
Start Job	03/26/2010 09:32							GAINED RETURNS AT 13 BBLS GONE OF MUD FLUSH
Pressure Test	03/26/2010 09:32							4200 PSI
Injection Test	03/26/2010 09:36		4	30		2500. 0		USES AS FIRST H2O SPACER
ISIP	03/26/2010 09:45						600.0	
Pump Spacer 1	03/26/2010 09:50		3	20		1650. 0		MUD FLUSH
Pump Spacer 1	03/26/2010 09:57		3	10		1580. 0		H2O SPACER

Activity Description	Date/Time	Cht #	Rate bbl/ min	Volume bbl		Pressure psig		Comments
				Stage	Total	Tubing	Casing	
Pump Spacer 1	03/26/2010 10:04		3	30		1450. 0		SUPERFLUSH 101, TRANSPORT ON LOCATION 3 HOURS FROM 0800-1100
Pump Lead Cement	03/26/2010 10:17		3	82.5		2160. 0		315 SKS, 13 PPG, 1.47FT3/SK, 7.08 GAL/SK
Pump Tail Cement	03/26/2010 10:44		3	10.2		1236. 0		50SKS, 15.8 PPG, 1.15 FT3/SK, 4.96 GAL/SK, HAD PROBLEMS MAINTAINING DENSITY
Pump Displacement	03/26/2010 10:49		4	22.1		2600. 0		FRESH WATER, LEFT .5 BBLS CEMENT IN TUBING TO REVIRSE OUT
Other	03/26/2010 10:56							SHUTDOWN STING OUT OF RETAINER/SET UP TO REVERSE CIRC.
Reverse Circ Well	03/26/2010 10:59		4	30		2250. 0		GOT .5 BBLS CEMENT BACK TO PIT
End Job	03/26/2010 11:08							
Pre-Rig Down Safety Meeting	03/26/2010 12:00							WITH ALL HES PERSONNEL
Rig-Down Completed	03/26/2010 12:45							
Pre-Convoy Safety Meeting	03/26/2010 13:00							WITH ALL HES PERSONNEL
Crew Leave Location	03/26/2010 13:30							
Comment	03/26/2010 13:30							THANKYOU FOR USING HALLIBURTON CEMENT, JAMES LEIST AND CREW

# BILL BARRETT

## SQUEEZE PERFS



Local Event Log					
1 START JOB	09:32:12	2 PRESSURE TEST	09:32:58	3 PUMP INJECTION RATE	09:36:52
4 SHUTDOWN/ISIP	09:45:20	5 MUD FLUSH	09:50:41	6 H2O SPACER	09:57:35
7 SUPERFLUSH	10:04:30	8 H2O SPACER	10:15:35	9 LEAD CEMENT	10:17:20
10 TAIL CEMENT	10:44:18	11 DISPLACEMENT	10:49:39	12 SHUTDOWN/STING OUT	10:56:10
13 REVERSE OUT	10:59:05	14 END JOB	11:08:43		

Customer: BILL BARRETT  
 Well Description: DOMMER 32A-26-692  
 Company Rep: JACK HARTNET

Job Date: 26-Mar-2010  
 Job Type: SQUEEZE PERFS  
 Cement Supervisor: JAMES LEIST

Sales Order #: 7252580  
 ADC Used: YES  
 Elite #:9 BILL JAMISON

OptiCem v6.3.4  
 26-Mar-10 11:42