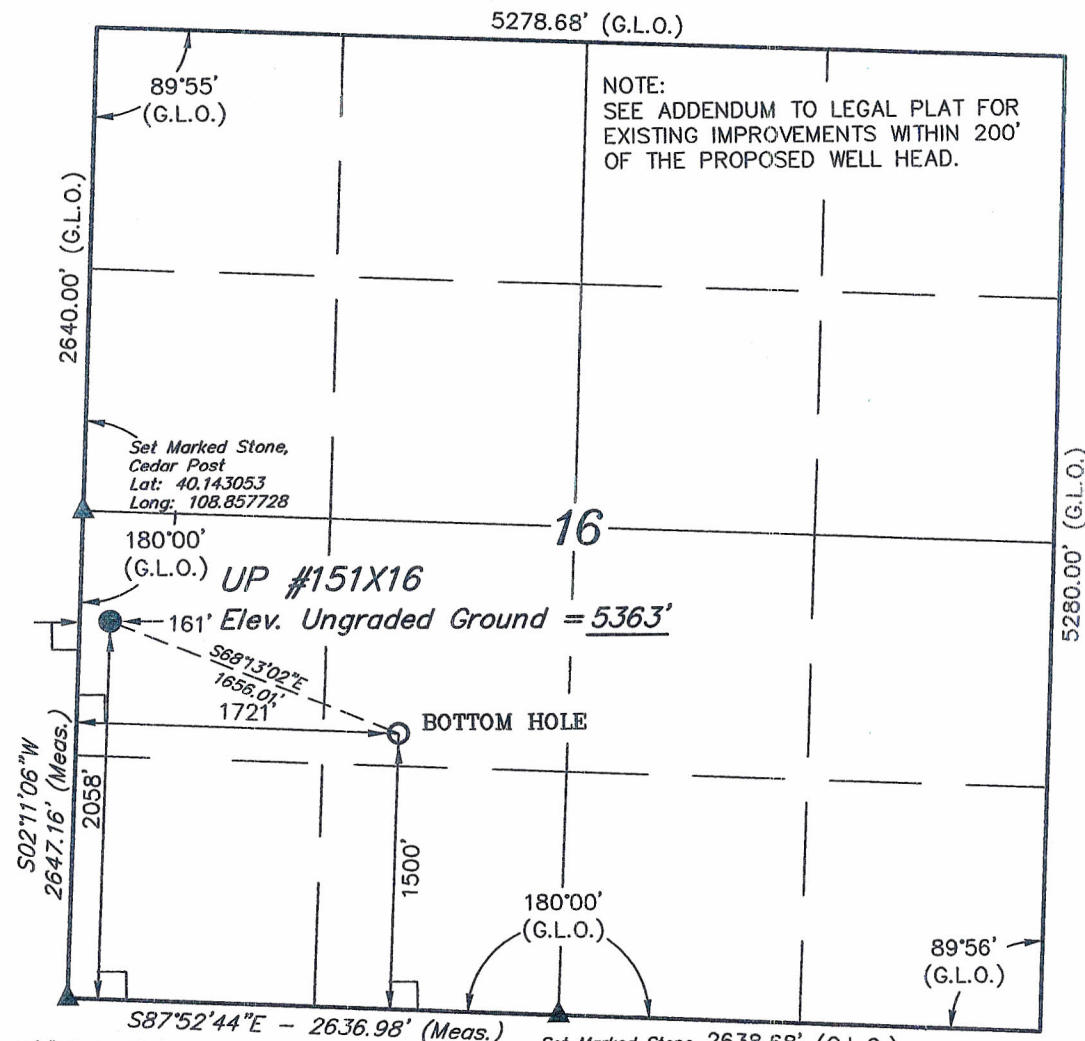


T2N, R102W, 6th P.M.

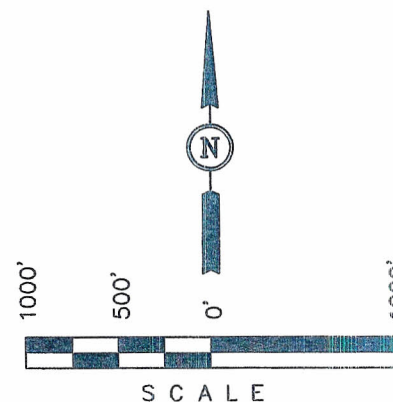
CHEVRON U.S.A., INC.

Well location, UP #151X16, located as shown in the NW 1/4 SW 1/4 of Section 16, T2N, R102W, 6th P.M., Rio Blanco County, Colorado.



BASIS OF ELEVATION

GOLF TRIANGULATION STATION LOCATED IN THE SE 1/4 30, T2N, R102W, 6th P.M. TAKEN FROM THE BANTY POINT QUADRANGLE, COLORADO, RIO BLANCO, 7.5 MINUTE QUAD. (TOPOGRAPHIC MAP) PUBLISHED BY THE UNITED STATES DEPARTMENT OF THE INTERIOR, GEOLOGICAL SURVEY. SAID ELEVATION IS MARKED AS BEING 5311 FEET.



CERTIFICATE

THIS IS TO CERTIFY THAT THE ABOVE PLAT WAS PREPARED FROM FIELD NOTES OF ACTUAL SURVEYS MADE BY ME OR UNDER MY SUPERVISION AND THAT THE SAME ARE TRUE AND CORRECT TO THE BEST OF MY KNOWLEDGE AND BELIEF.

REGISTERED LAND SURVEYOR
REGISTRATION NO. 17492
STATE OF COLORADO

UINTAH ENGINEERING & LAND SURVEYING
85 SOUTH 200 EAST - VERNAL, UTAH 84078
(435) 789-1017

LEGEND:

- └─┘ = 90° SYMBOL
- = PROPOSED WELL HEAD.
- ▲ = SECTION CORNERS LOCATED.

BASIS OF BEARINGS IS A G.P.S. OBSERVATION.

PDOP = 0.6

NAD 83 (TARGET BOTTOM HOLE)	NAD 83 (SURFACE LOCATION)
LATITUDE = 40°08'23.66" (40.139906)	LATITUDE = 40°08'29.16" (40.141433)
LONGITUDE = 108°51'05.68" (108.851579)	LONGITUDE = 108°51'25.76" (108.857156)
NAD 27 (TARGET BOTTOM HOLE)	NAD 27 (SURFACE LOCATION)
LATITUDE = 40°08'23.76" (40.139933)	LATITUDE = 40°08'29.26" (40.141461)
LONGITUDE = 108°51'03.29" (108.850914)	LONGITUDE = 108°51'23.37" (108.856492)

SCALE 1" = 1000'	DATE SURVEYED: 10-14-08	DATE DRAWN: 10-15-08
PARTY J.F. C.L. C.H.	REFERENCES G.L.O. PLAT	
WEATHER WARM	FILE CHEVRON U.S.A., INC.	