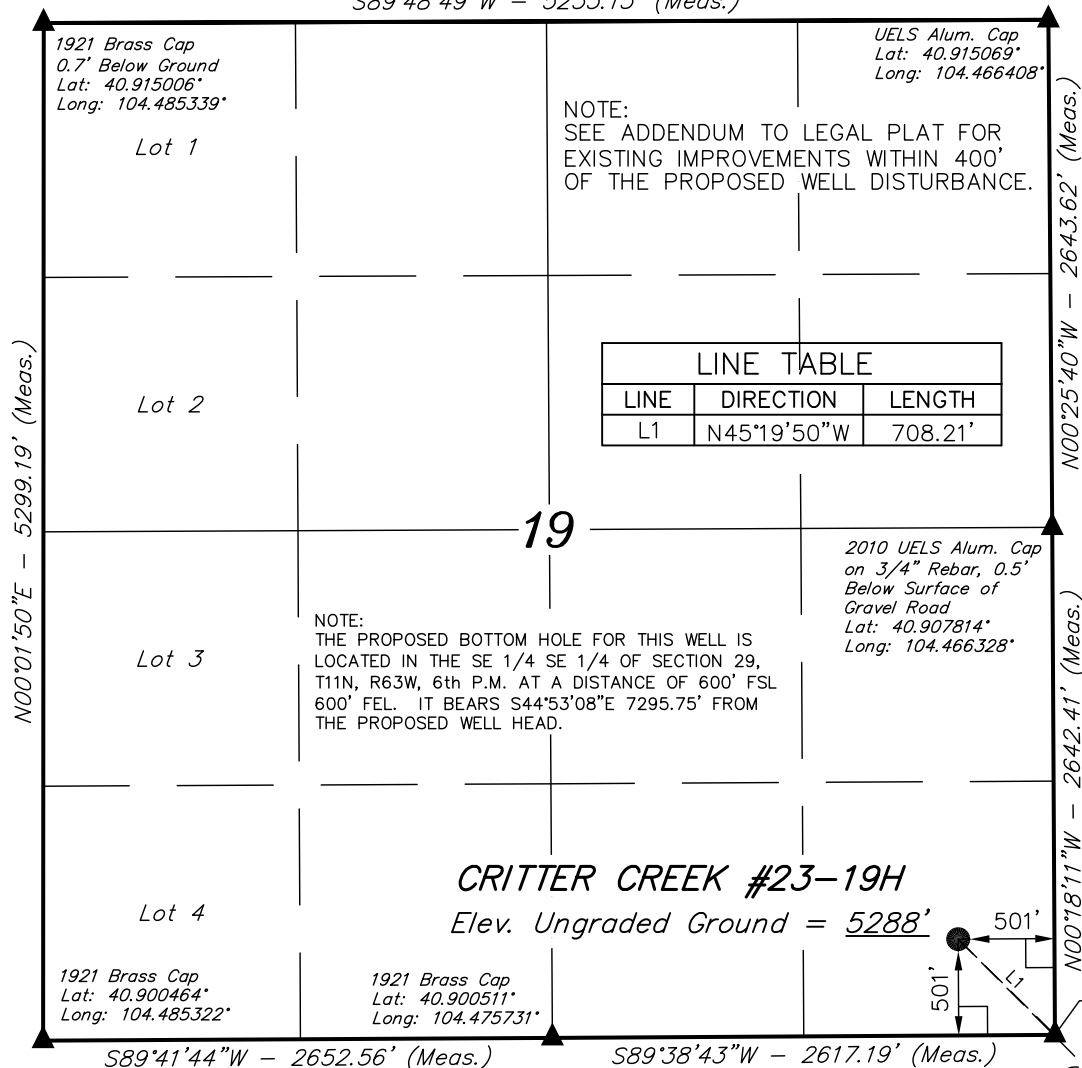


T11N, R63W, 6th P.M.

S89°48'49"W - 5233.15' (Meas.)



NOTE:  
SEE ADDENDUM TO LEGAL PLAT FOR  
EXISTING IMPROVEMENTS WITHIN 400'  
OF THE PROPOSED WELL DISTURBANCE.

LINE TABLE		
LINE	DIRECTION	LENGTH
L1	N45°19'50\"W	708.21'

NOTE:  
THE PROPOSED BOTTOM HOLE FOR THIS WELL IS  
LOCATED IN THE SE 1/4 SE 1/4 OF SECTION 29,  
T11N, R63W, 6th P.M. AT A DISTANCE OF 600' FSL  
600' FEL. IT BEARS S44°53'08\"E 7295.75' FROM  
THE PROPOSED WELL HEAD.

CRITTER CREEK #23-19H  
Elev. Ungraded Ground = 5288'

PDOP = 0.9	
NAD 83 (SURFACE LOCATION)	
LATITUDE = 40°54'06.95\" (40.901931)	
LONGITUDE = 104°28'05.12\" (104.468089)	
NAD 27 (SURFACE LOCATION)	
LATITUDE = 40°54'07.01\" (40.901947)	
LONGITUDE = 104°28'03.27\" (104.467575)	
STATE PLANE NAD 83 (COLORADO NORTH)	
SURFACE LOCATION:	
N: 1573084.346 E: 3285263.499	
STATE PLANE NAD 27 (COLORADO NORTH)	
SURFACE LOCATION:	
N: 573082.511 E: 2285412.947	

LEGEND:

- └─┘ = 90° SYMBOL
- = PROPOSED WELL HEAD.
- ▲ = SECTION CORNERS LOCATED.

EOG RESOURCES, INC.

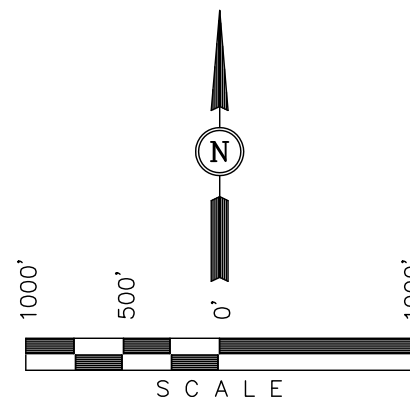
Well location, (SURFACE LOCATION) CRITTER CREEK  
#23-19H, located as shown in the SE 1/4 SE  
1/4 of Section 19, T11N, R63W, 6th P.M., Weld  
County, Colorado.

BASIS OF ELEVATION

SPOT ELEVATION AT THE NORTHEAST CORNER OF SECTION  
1, T11N, R63W, 6th P.M. TAKEN FROM THE HEREFORD,  
QUADRANGLE, COLORADO, WELD COUNTY, 7.5 MINUTE QUAD  
(TOPOGRAPHIC MAP) PUBLISHED BY THE UNITED STATES  
DEPARTMENT OF THE INTERIOR, GEOLOGICAL SURVEY. SAID  
ELEVATION IS MARKED AS BEING 5352 FEET.

BASIS OF BEARINGS

BASIS OF BEARINGS IS A G.P.S. OBSERVATION.



CERTIFICATE

THIS IS TO CERTIFY THAT THE ABOVE PLAT WAS PREPARED FROM  
FIELD NOTES OF ACTUAL SURVEYS MADE BY ME OR UNDER MY  
SUPERVISION AND THAT THE SAME ARE TRUE AND CORRECT TO THE  
BEST OF MY KNOWLEDGE AND BELIEF.

REGISTERED LAND SURVEYOR  
REGISTRATION NO. 17492  
STATE OF COLORADO

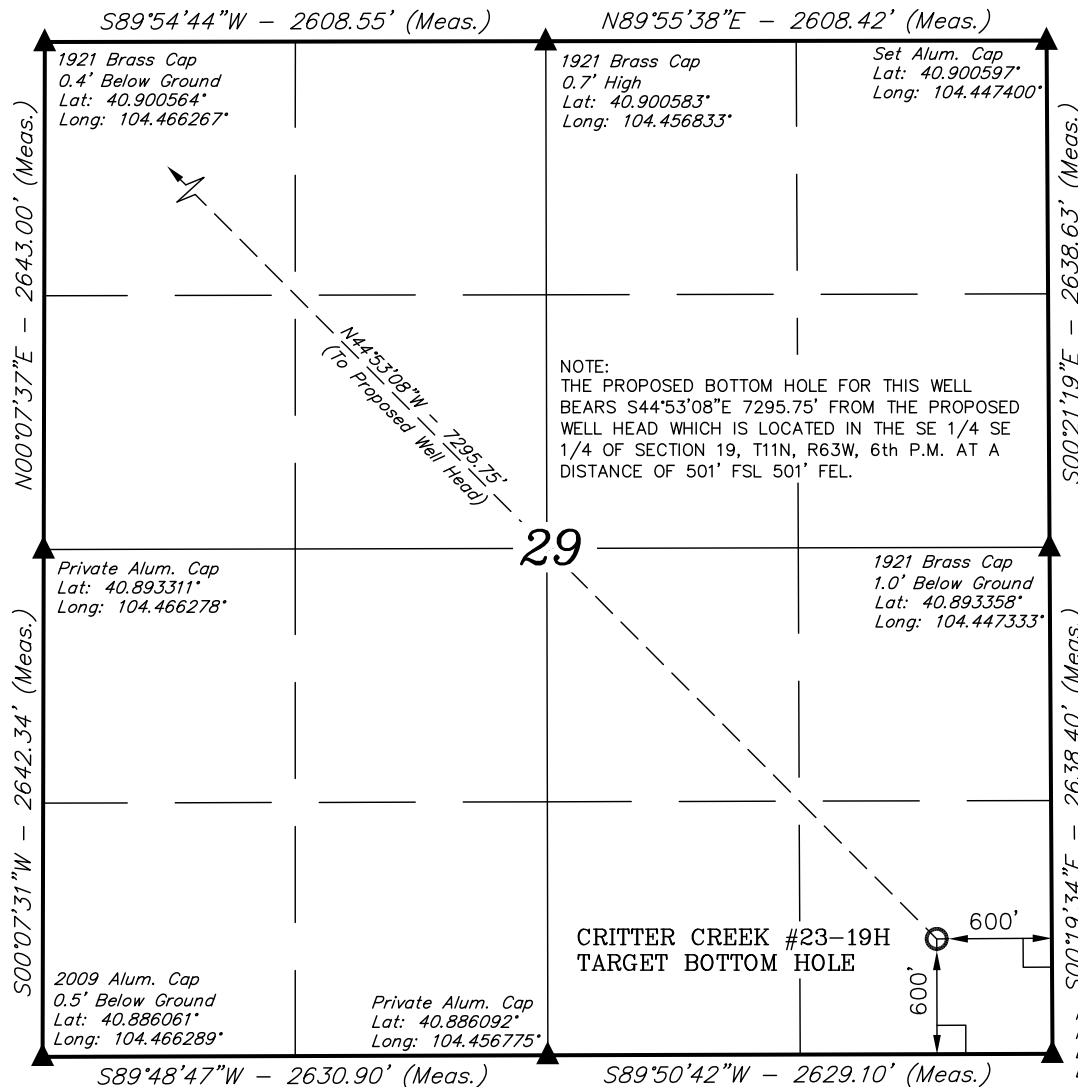
REVISED: 10-29-10

UINTAH ENGINEERING & LAND SURVEYING  
85 SOUTH 200 EAST - VERNAL, UTAH 84078  
(435) 789-1017

SCALE 1" = 1000'	DATE SURVEYED: 10-03-10	DATE DRAWN: 10-14-10
PARTY J.F. T.H. S.L.	REFERENCES G.L.O. PLAT	
WEATHER WARM	FILE EOG RESOURCES, INC.	

T11N, R63W, 6th P.M.

EOG RESOURCES, INC.



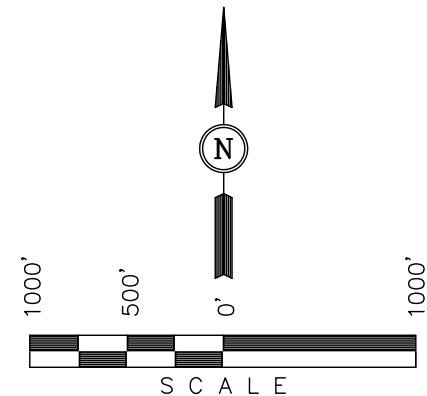
Well location, (TARGET BOTTOM HOLE) CRITTER CREEK #23-19H, located as shown in the SE 1/4 SE 1/4 of Section 19, T11N, R63W, 6th P.M., Weld County, Colorado.

### BASIS OF ELEVATION

SPOT ELEVATION AT THE NORTHEAST CORNER OF SECTION 1, T11N, R63W, 6th P.M. TAKEN FROM THE HEREFORD, QUADRANGLE, COLORADO, WELD COUNTY, 7.5 MINUTE QUAD (TOPOGRAPHIC MAP) PUBLISHED BY THE UNITED STATES DEPARTMENT OF THE INTERIOR, GEOLOGICAL SURVEY. SAID ELEVATION IS MARKED AS BEING 5352 FEET.

### BASIS OF BEARINGS

BASIS OF BEARINGS IS A G.P.S. OBSERVATION.



### CERTIFICATE

THIS IS TO CERTIFY THAT THE ABOVE PLAT WAS PREPARED FROM FIELD NOTES OF ACTUAL SURVEYS MADE BY ME OR UNDER MY SUPERVISION AND THAT THE SAME ARE TRUE AND CORRECT TO THE BEST OF MY KNOWLEDGE AND BELIEF.

17/03/2010  
REGISTERED LAND SURVEYOR  
REGISTRATION NO. 17492  
STATE OF COLORADO

REVISED: 10-29-10

**UINTAH ENGINEERING & LAND SURVEYING**  
85 SOUTH 200 EAST - VERNAL, UTAH 84078  
(435) 789-1017

### LEGEND:

- └─┘ = 90° SYMBOL
- = PROPOSED WELL HEAD.
- ▲ = SECTION CORNERS LOCATED.

NAD 83 (TARGET BOTTOM HOLE)
LATITUDE = 40°53'15.93" (40.887758)
LONGITUDE = 104°26'58.03" (104.449453)
NAD 27 (TARGET BOTTOM HOLE)
LATITUDE = 40°53'15.99" (40.887775)
LONGITUDE = 104°26'56.19" (104.448942)
STATE PLANE NAD 83 (COLORADO NORTH)
TARGET BOTTOM HOLE:
N: 1567981.553 E: 3290476.235
STATE PLANE NAD 27 (COLORADO NORTH)
TARGET BOTTOM HOLE:
N: 567979.801 E: 2290625.625

SCALE 1" = 1000'	DATE SURVEYED: 10-03-10	DATE DRAWN: 10-14-10
PARTY J.F. T.H. S.L.	REFERENCES G.L.O. PLAT	
WEATHER WARM	FILE EOG RESOURCES, INC.	