

WILLIAMS PRODUCTION RMT INC EBUSINE
DO NOT MAIL - PO BOX 21218
TULSA, Oklahoma

RWF
RWF 14-28

CYCLONE 14/ CYCLONE/14

Post Job Summary

Cement Surface Casing

Prepared for: JOHN TURNER
Date Prepared: 2/09/09
Version: 1

Service Supervisor: CARTER, ERIC

Submitted by:

HALLIBURTON

The Road to Excellence Starts with Safety

Sold To #: 300721		Ship To #: 2712527		Quote #:		Sales Order #: 6462496	
Customer: WILLIAMS PRODUCTION RMT INC EBUSINE				Customer Rep: TURNER, JOHN			
Well Name: RWF			Well #: 14-28		API/UWI #:		
Field: GRAND VALLEY		City (SAP): RIFLE		County/Parish: Garfield		State: Colorado	
Contractor: CYCLONE 14			Rig/Platform Name/Num: CYCLONE 14				
Job Purpose: Cement Surface Casing							
Well Type: Development Well				Job Type: Cement Surface Casing			
Sales Person: MARCOTTE, WAYNE			Srvc Supervisor: CARTER, ERIC		MBU ID Emp #: 345598		
Job Personnel							
HES Emp Name	Exp Hrs	Emp #	HES Emp Name	Exp Hrs	Emp #	HES Emp Name	Exp Hrs
CARTER, ERIC Earl	7	345598	CHRISTOFFERSON, JUSTIN Wayne	7	435308	KUKUS, CHRISTOPHER A	7
REEVES, BRANDON W	7	287883	STEELE, BENJAMIN F	7	458599		
Equipment							
HES Unit #	Distance-1 way	HES Unit #	Distance-1 way	HES Unit #	Distance-1 way	HES Unit #	Distance-1 way
10724333	60 mile	10784064	60 mile	10829463	60 mile	10857016	60 mile
10872113	60 mile	11006314	60 mile				
Job Hours							
Date	On Location Hours	Operating Hours	Date	On Location Hours	Operating Hours	Date	On Location Hours
2/09/09	7	2.5					
TOTAL			<i>Total is the sum of each column separately</i>				
Job				Job Times			
Formation Name		SURFACE		Date		Time	Time Zone
Formation Depth (MD)	Top	0	Bottom	1149.38 FT.	Called Out	09 - Feb - 2009	11:40
Form Type		BHST			On Location	09 - Feb - 2009	15:00
Job depth MD	1153. ft	Job Depth TVD	1153. ft		Job Started	09 - Feb - 2009	19:25
Water Depth		Wk Ht Above Floor	5		Job Completed	09 - Feb - 2009	20:17
Perforation Depth (MD)	From		To		Departed Loc	09 - Feb - 2009	21:30
Well Data							
Description	New / Used	Max pressure psig	Size in	ID in	Weight lbm/ft	Thread	Grade
							Top MD ft
							Bottom MD ft
							Top TVD ft
							Bottom TVD ft
Sales/Rental/3rd Party (HES)							
Description					Qty	Qty uom	Depth
PLUG,CMTG,TOP,9 5/8,HWE,8.16 MIN/9.06 MA					1	EA	
ADC (AUTO DENSITY CTRL) SYS, /JOB,ZI					1	JOB	
PORT. DAS W/CEMWIN;ACQUIRE W/HES, ZI					1	JOB	
Tools and Accessories							
Type	Size	Qty	Make	Depth	Type	Size	Qty
Guide Shoe					Packer		
Float Shoe					Bridge Plug		
Float Collar					Retainer		
Insert Float							
Stage Tool							
Miscellaneous Materials							
Gelling Agt		Conc		Surfactant		Conc	
Treatment Fld		Conc		Inhibitor		Conc	
						Acid Type	
						Sand Type	
						Qty	
						Size	
						Conc	
						Qty	
						%	

Fluid Data										
Stage/Plug #: 1										
Fluid #	Stage Type	Fluid Name	Qty	Qty uom	Mixing Density lbm/gal	Yield ft ³ /sk	Mix Fluid Gal/sk	Rate bbl/min	Total Mix Fluid Gal/sk	
1	H2O SPACER		20	bbl	8.33	.0	.0	.0		
2	Lead Cement	VERSACEM (TM) SYSTEM (452010)	155	sacks	12.3	2.38	13.75			
0.432 Gal		FRESH WATER								
3	Tail Cement	VERSACEM (TM) SYSTEM (452010)	160	sacks	12.8	2.11	11.75			
4	DISPLACEMENT		87.2	bbl	8.33	.0	.0	.0		
11.75 Gal		FRESH WATER								
Calculated Values		Pressures		Volumes						
Displacement	87.2	Shut In: Instant		Lost Returns	NONE	Cement Slurry		Pad		
Top Of Cement	SURFACE	5 Min		Cement Returns	15	Actual Displacement	87.2	Treatment		
Frac Gradient		15 Min		Spacers	20	Load and Breakdown		Total Job	233	
Rates										
Circulating		Mixing	8	Displacement	9	Avg. Job	8.5			
Cement Left In Pipe	Amount	41.25 ft	Reason	Shoe Joint						
Frac Ring # 1 @	ID	Frac ring # 2 @	ID	Frac Ring # 3 @	ID	Frac Ring # 4 @	ID			
The Information Stated Herein Is Correct				Customer Representative Signature						

The Road to Excellence Starts with Safety

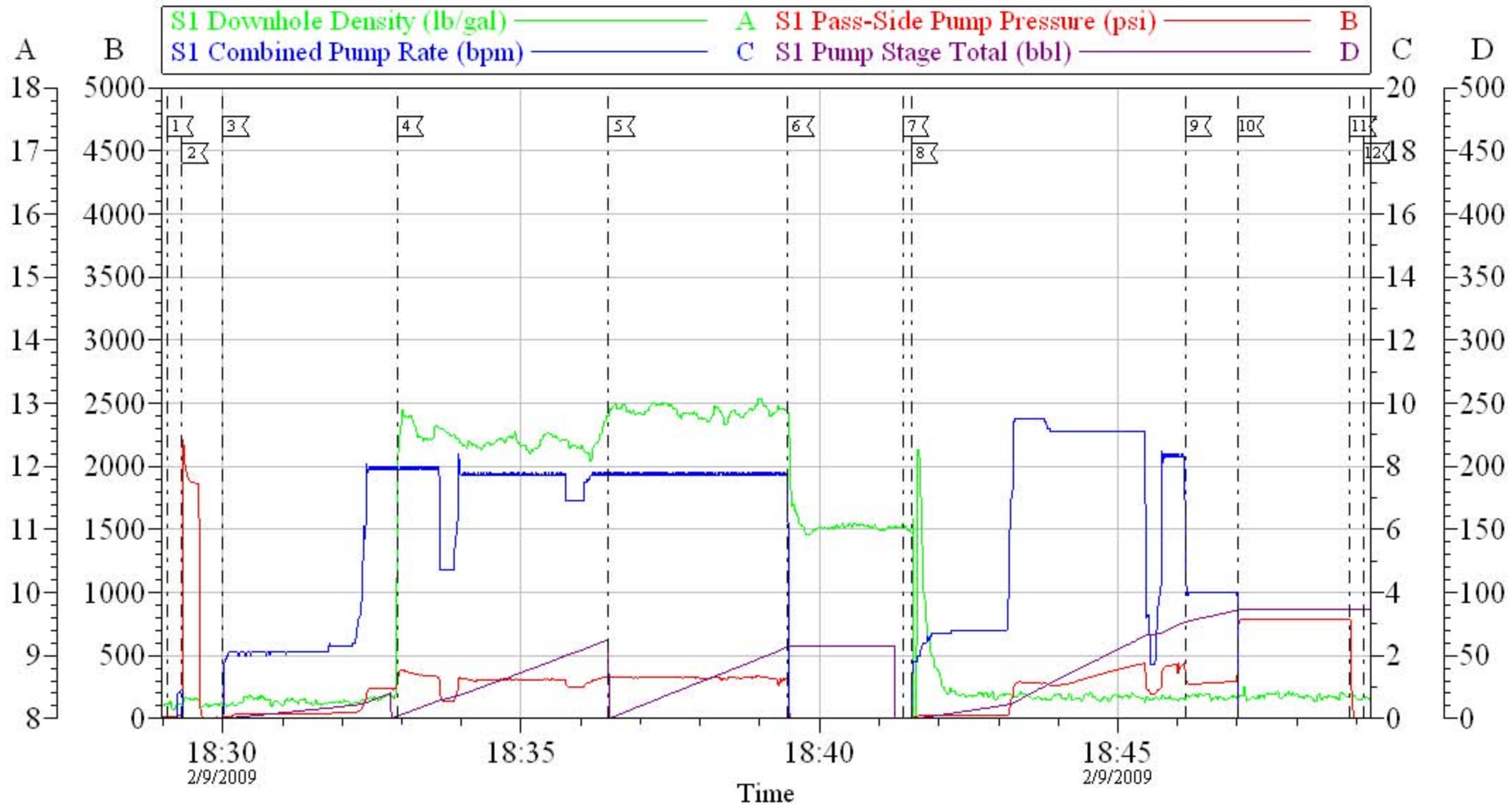
Sold To #: 300721		Ship To #: 2712527		Quote #:		Sales Order #: 6462496	
Customer: WILLIAMS PRODUCTION RMT INC EBUSINE				Customer Rep: TURNER, JOHN			
Well Name: RWF			Well #: 14-28			API/UWI #:	
Field: GRAND VALLEY		City (SAP): RIFLE		County/Parish: Garfield			State: Colorado
Legal Description:							
Lat:				Long:			
Contractor: CYCLONE 14			Rig/Platform Name/Num: CYCLONE 14				
Job Purpose: Cement Surface Casing						Ticket Amount:	
Well Type: Development Well			Job Type: Cement Surface Casing				
Sales Person: MARCOTTE, WAYNE			Srvc Supervisor: CARTER, ERIC			MBU ID Emp #: 345598	

Activity Description	Date/Time	Cht #	Rate bbl/min	Volume bbl		Pressure psig		Comments
				Stage	Total	Tubing	Casing	
Call Out	02/09/2009 11:40							
Depart Yard Safety Meeting	02/09/2009 13:20							ATTENDED BY ALL HES CREW
Crew Leave Yard	02/09/2009 13:30							
Arrive At Loc	02/09/2009 15:00							RIG RUNNING CASING
Assessment Of Location Safety Meeting	02/09/2009 15:10							ATTENDED BY ALL HES CREW
Pre-Rig Up Safety Meeting	02/09/2009 18:20							ATTENDED BY ALL HES CREW
Rig-Up Equipment	02/09/2009 18:30							HAD TO GO IN AIR TO PUT SWEDGE ON SO RIG COULD CIRCULATE
Pre-Job Safety Meeting	02/09/2009 19:00							ATTENDED BY ALL HES CREW AND RIG CREW, RIG RECIRCULATING AT 90 STROKES A MINUTE
Start Job	02/09/2009 19:25							TP 1149.38', TD 1153', SJ 41.25', FC SET AT 1108.55', MW 10.1 PPG, CASING 9.625", 32.2#, H-40, HOLE 13.5"(BOOST PRESSURE 8 PSI ON WATER @ RPM 1900)
Test Lines	02/09/2009 19:28		2	2				PRESSURED UP TO 1900 PSI, PRESSURE HELD
Pump Spacer 1	02/09/2009 19:30		8	20			240.0	FRESH WATER

Activity Description	Date/Time	Cht #	Rate bbl/min	Volume bbl		Pressure psig		Comments
				Stage	Total	Tubing	Casing	
Pump Lead Cement	02/09/2009 19:37		8	65.7			360.0	155 SKS MIXED AT 12.3 PPG, 2.38 YIELD, 13.75 GL/SK=65.7 BBLS
Pump Tail Cement	02/09/2009 19:45		8	60.1			340.0	160 SKS MIXED AT 12.8 PPG, 2.11 YIELD, 11.75 GL/SK=60.1 BBLS
Shutdown	02/09/2009 19:52							
Drop Top Plug	02/09/2009 19:57							COMPANY REP VERIFIED THAT PLUG LAUNCHED
Pump Displacement	02/09/2009 19:58		9	77.2			412.0	FRESH WATER
Slow Rate	02/09/2009 20:09		4	10			290.0	
Bump Plug	02/09/2009 20:12		4	87.2			786.0	PLUG LANDED AT 290 PSI, PRESSURED UP TO 786 PSI
Check Floats	02/09/2009 20:16							FLOATS HELD
End Job	02/09/2009 20:17							BOOST PRESSURE PSI 10 PSI ON LEAD, 10 PSI ON TAIL @ 1900 RPM
Post-Job Safety Meeting (Pre Rig-Down)	02/09/2009 20:20							ATTENDED BY ALL HES CREW
Rig-Down Equipment	02/09/2009 20:30							
Depart Location Safety Meeting	02/09/2009 21:20							ATTENDED BY ALL HES CREW
Crew Leave Location	02/09/2009 21:30							THANK YOU FOR USING HALLIBURTON CEMENT, ERIC CARTER AND CREW.

WILLIAMS CYCLON 14

9.625 SURFACE



Local Event Log

1 START JOB	18:29:04	2 TEST LINES	18:29:19	3 PUMP SPACER	18:30:00
4 PUMP LEAD	18:32:55	5 PUMP TAIL	18:36:28	6 SHUTDOWN	18:39:28
7 DROP PLUG	18:41:24	8 PUMP DISPLACEMENT	18:41:32	9 SLOW RATE	18:46:08
10 BUMP PLUG	18:47:01	11 CHECK FLOATS	18:48:53	12 END JOB	18:49:07

Customer: WILLIAMS PRODUCTION RMT INC EBUSINE
 Well Name: RWF 14-28
 Company Rep: JOHN TURNER

Job Date: 09-Feb-2009
 Job Type: SURFACE
 Cement Supervisor: ERIC CARTER

Sales Order #: 6462496
 ADC Used: YES
 Elite #/Operator: 10/CHRIS KUKUS

OptiCern v6.4.0
 09-Feb-09 20:37