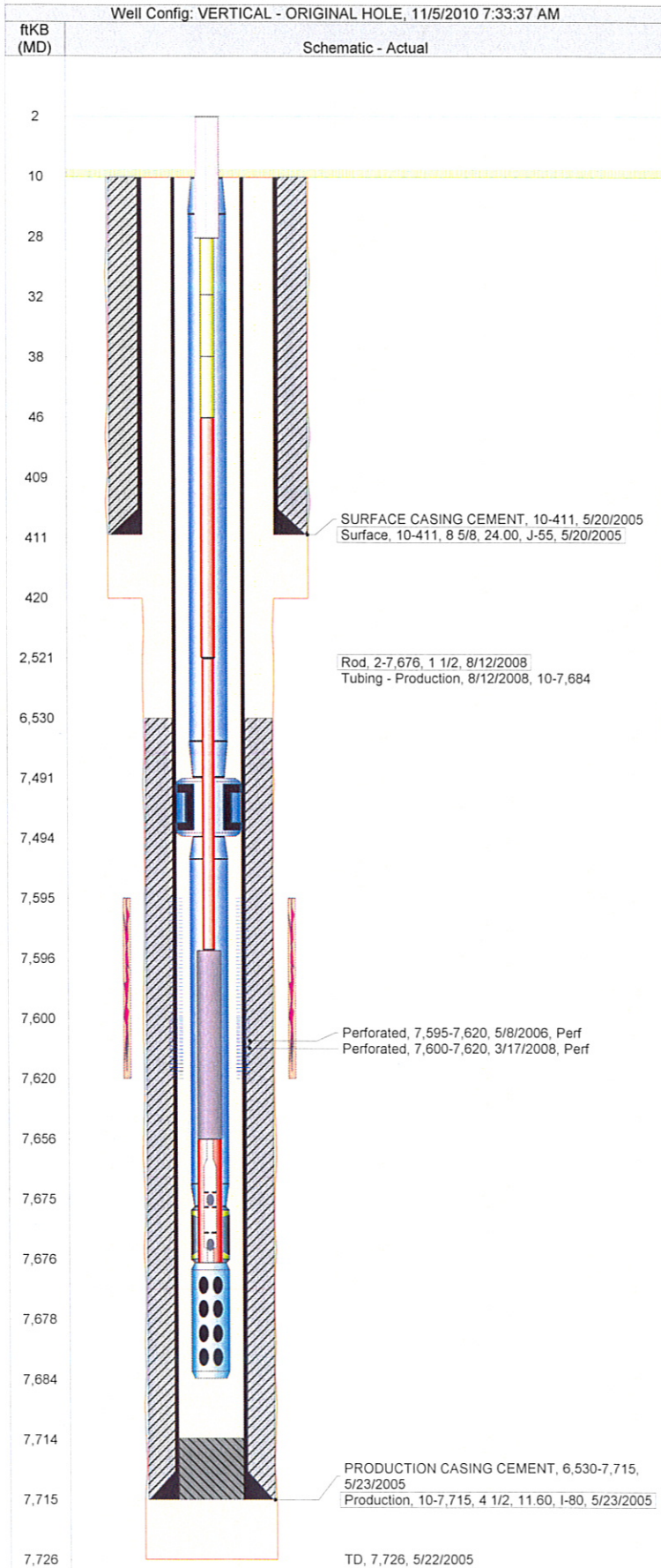
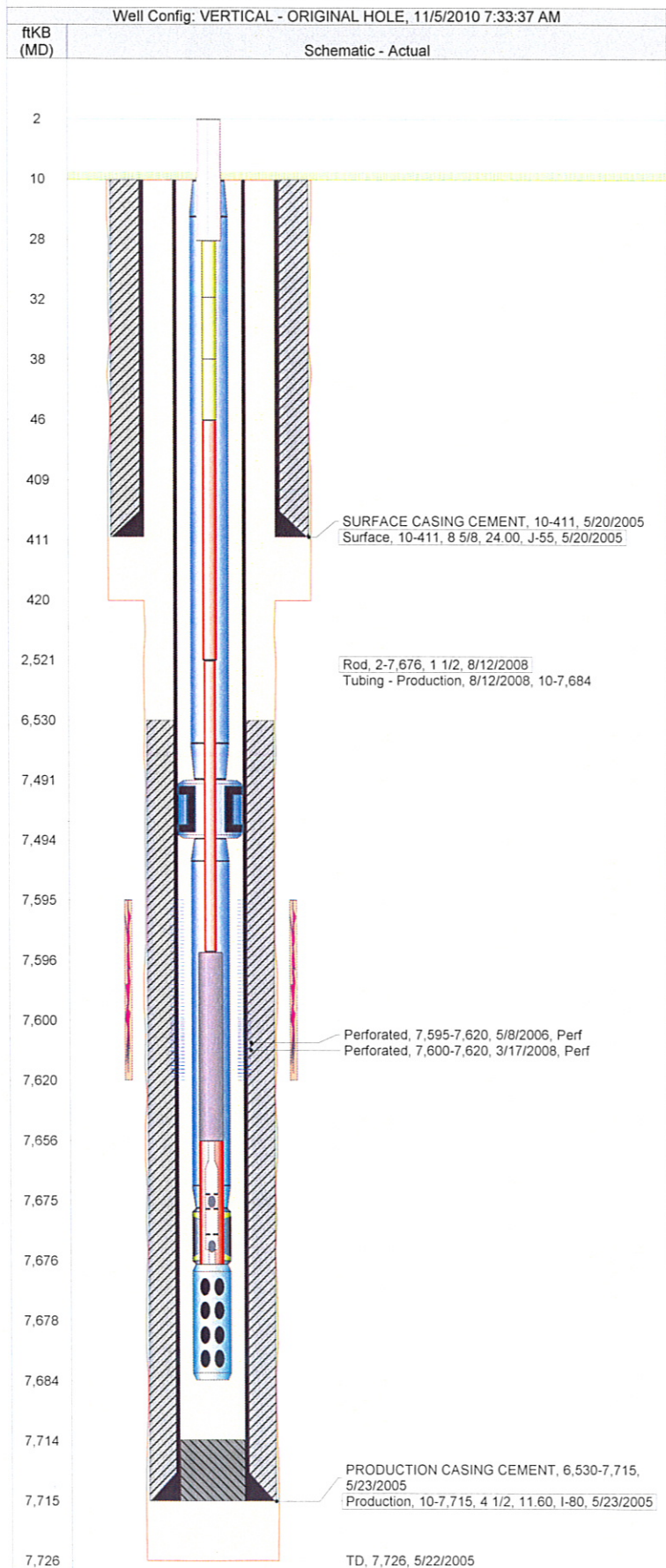


**Well Name: HALEY-RAY 13-21**



Well Header							
API	Business Unit		Spud Date		Well Configuration Type		
05-123-22935	WATTENBERG		5/19/2005		VERTICAL		
Orig KB Elev (ft)	KB - GL / ...	Quarter Quarter	Sec/Abs	Twn/Sur...	Range	P & A Date	
5,173.00	10	NESWSW	21	11N	61W		
Comment							
Found a 1pg report from Halliburton 2/12/2009 that shows JSND was frac'd. No other info or State Rpts to back this up.							
Directions To Well							
Bottom Hole Location							
North-South Distance (ft)		From N or S Line		East-West Distance (ft)		From E or W Line	
PBTDs							
Date	Depth (ftKB)	Method		Comment			
5/23/2005	7,713.0	CASING TALLY		GUIDE SHOE			
6/23/2005	7,678.0	CASED HOLE LOG		DEPTH LOGGER ON CBL			
Wellbore Sections							
Section		Size (in)		Act Top (ftKB)		Act Btm (ftKB)	
SURFACE		12 1/4		10.0		420.0	
PRODUCTION		7 7/8		420.0		7,726.0	
Zone Statuses							
Zone	Status Date	Status		Job			
J SAND	7/26/2006	Pumping - R...		DRILLING/COMPLETION - ORIGI...			
Casing Strings							
Surface, 411.0ftKB							
Casing Description	Run Date	String ...	String Wt...	String ...	Top (ftKB)	Set Depth ...	
Surface	5/20/2005	8 5/8	24.00	J-55	10.0	411.0	
Production, 7,715.0ftKB							
Casing Description	Run Date	String ...	String Wt...	String ...	Top (ftKB)	Set Depth ...	
Production	5/23/2005	4 1/2	11.60	I-80	10.0	7,715.0	
Cement							
Description					Top (ftKB)	Bottom (ftKB)	
SURFACE CASING CEMENT					10.0	411.0	
Description					Top (ftKB)	Bottom (ftKB)	
PRODUCTION CASING CEMENT					6,530.0	7,715.0	
Tubing Components							
Item Description	OD (in)	Wt (lbs/ft)	Grade	Jts	Len (ft)		
Tubing	2 3/8	4.70	C-90	244	7,481.00		
Anchor/catcher	3.99			1	3.00		
Tubing	2 3/8	4.70	C-90	6	181.00		
Pump Seating Nipple	2 3/8			1	1.00		
Perforated Joint	2 3/8			1	8.00		
Rods & Pumps							
Rod Description				Run Date	Set Depth (ftKB)		
Rod				8/12/2008	7,676.0		
Comment							
Item Description				OD Nominal (in)	Joints	Length (ft)	
Polished Rod				1 1/2	1	26.00	
Item Description				OD Nominal (in)	Joints	Length (ft)	
Pony Rod				7/8	1	4.00	
Item Description				OD Nominal (in)	Joints	Length (ft)	
Pony Rod				7/8	1	6.00	
Item Description				OD Nominal (in)	Joints	Length (ft)	
Pony Rod				7/8	1	8.00	
Item Description				OD Nominal (in)	Joints	Length (ft)	
Sucker Rod				7/8	99	2,475.00	
Item Description				OD Nominal (in)	Joints	Length (ft)	
Sucker Rod				3/4	203	5,075.00	
Item Description				OD Nominal (in)	Joints	Length (ft)	
Sinker Bar				1 1/2	2	60.00	
Item Description				OD Nominal (in)	Joints	Length (ft)	
RHBC Pump - BHD				1 1/2	1	20.00	
Perforation Data							
Zone	Bnch/Stg	Entered Shot Total	Top (ftKB)	Btm (ftKB)	Date		
J SAND, ORIGINA...		50	7,595.0	7,620.0	5/8/2006		
J SAND, ORIGINA...		80	7,600.0	7,620.0	3/17/2008		

**Well Name: HALEY-RAY 13-21**



## Stimulations & Treatments

Date	Zone	Primary Job Type
5/11/2006	J SAND, ORIGINAL HOLE	DRILLING/COMPLETION - ORIGINAL
Technical Result	Tech Result Details	Tech Result Notes

Comment

DFIT

Date	Zone	Primary Job Type
6/16/2006	J SAND, ORIGINAL HOLE	DRILLING/COMPLETION - ORIGINAL
Technical Result	Tech Result Details	Tech Result Notes

Comment

FRAC JSAND

Date	Zone	Primary Job Type
4/4/2008	J SAND, ORIGINAL HOLE	CLEAN-OUT
Technical Result	Tech Result Details	Tech Result Notes

Comment

ACETIC ACIDIZE TO C/O WELLBORE

## Other In Hole

Run Date	Description	OD (in)	Top (ftKB)	Btm (ftKB)
----------	-------------	---------	------------	------------

## Logs

Date	Type	Top (ftKB)	Btm (ftKB)
5/23/2005	COMPENSATED DENSITY	3,850.0	7,695.0
5/23/2005	INDUCTION	411.0	7,715.0
6/23/2005	CBL/CCL/GR	411.0	7,715.0