

T6S, R93W, 6th P.M.

See Sheet 21

1894.89' (From Top of Hole)

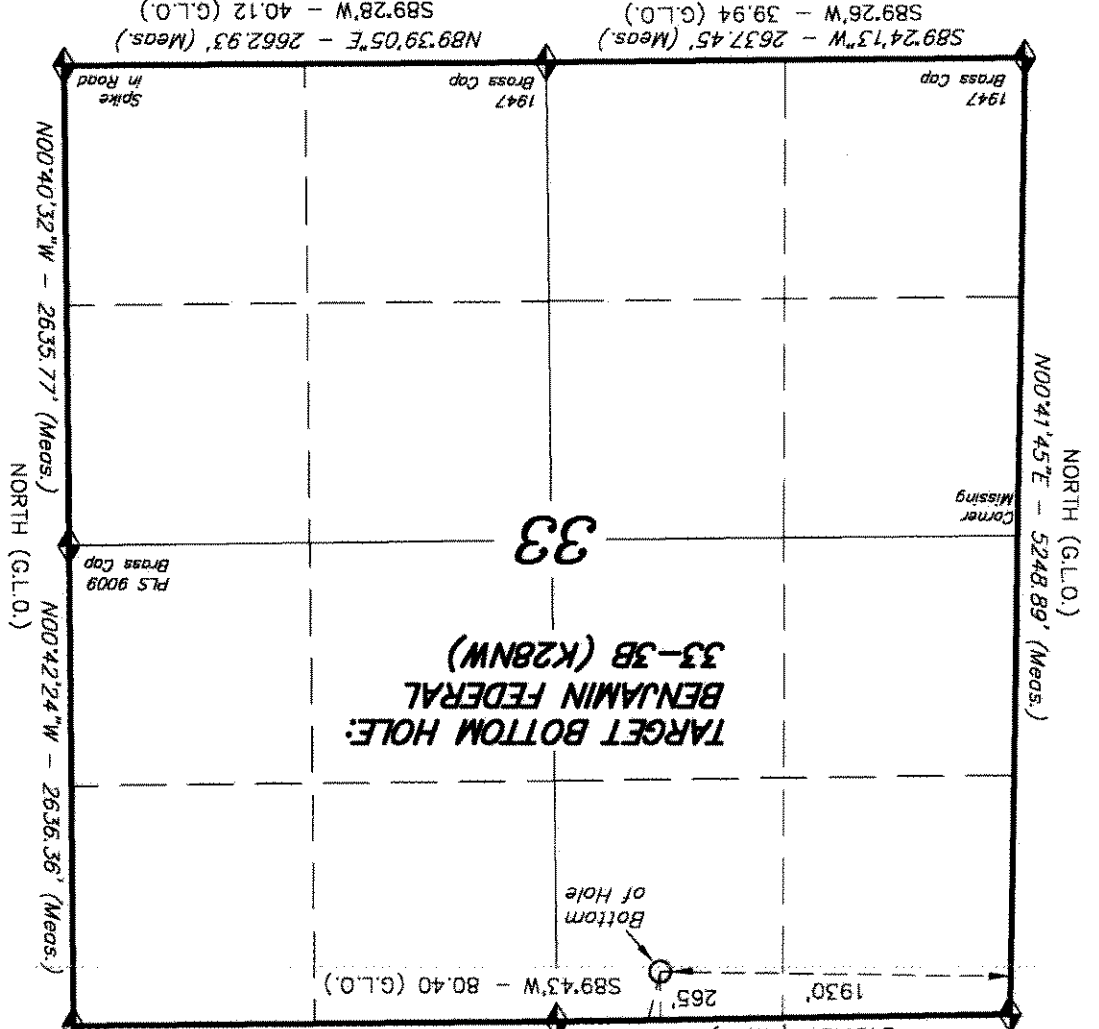
1974 County Surveyor (Brass Cap) 589.27'38"W 2675.71' (Meas.)

1974 County Surveyor (Brass Cap)

589.02'36"W 2497.61' (Meas.)

265' 1930' 589.43'W - 80.40' (G.L.O.)

Bottom of Hole

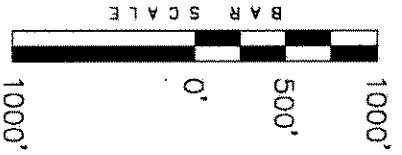


IMPROVEMENT NOTE:
See addendum to legal plat (sheet 2u) for visible improvements within 400' of the proposed well pad.

Basin of elevation is the Rifle 2 Triangulation Station, 39°31'53.80" N Lat. & 107°47'07.78" W Long. (NAD 83). Elevation = 5323.1' (NAVD88).

SECTION CORNERS LOCATED

TARGET BOTTOM HOLE, BENJAMIN FEE 33-3B (K28NW), LOCATED AS SHOWN IN THE NE 1/4 NW 1/4 OF SECTION 33, T6S, R93W, 6th P.M. GARFIELD COUNTY, COLORADO.



- NOTES:
1. Well footages are measured at right angles to the Section Lines.
 2. Bearings are based on Global Positioning Satellite observations.
 3. G.P.S. Operator: C.D. Slough, (PDOP) = 2.8

THIS IS TO CERTIFY THAT THE ABOVE PLAT WAS PREPARED FROM FIELD NOTES OF A SURVEY MADE BY ME OR UNDER MY SUPERVISION. THE LOCATION HAS BEEN STAKED ON THE GROUND AS SHOWN ON THE PLAT, AND THAT THE SAME ARE TRUE AND CORRECT TO THE BEST OF MY KNOWLEDGE AND BELIEF.

REGISTERED LAND SURVEYOR
STATE OF COLORADO
REGISTRATION No. 30125
30125

TRI STATE LAND SURVEYING & CONSULTING
180 NORTH VERNAL AVE. - VERNAL, UTAH 84078
(435) 781-2501

| | | |
|----------------|-----------------|---------------------|
| DATE SURVEYED: | 06-11-10 | SURVEYED BY: C.D.S. |
| DATE DRAWN: | 06-14-10 | DRAWN BY: L.C.S. |
| REVISED: | L.C.S. 10-25-10 | |

211

OF 11



N

ENCANA OIL & GAS (USA) INC

RECEIVED