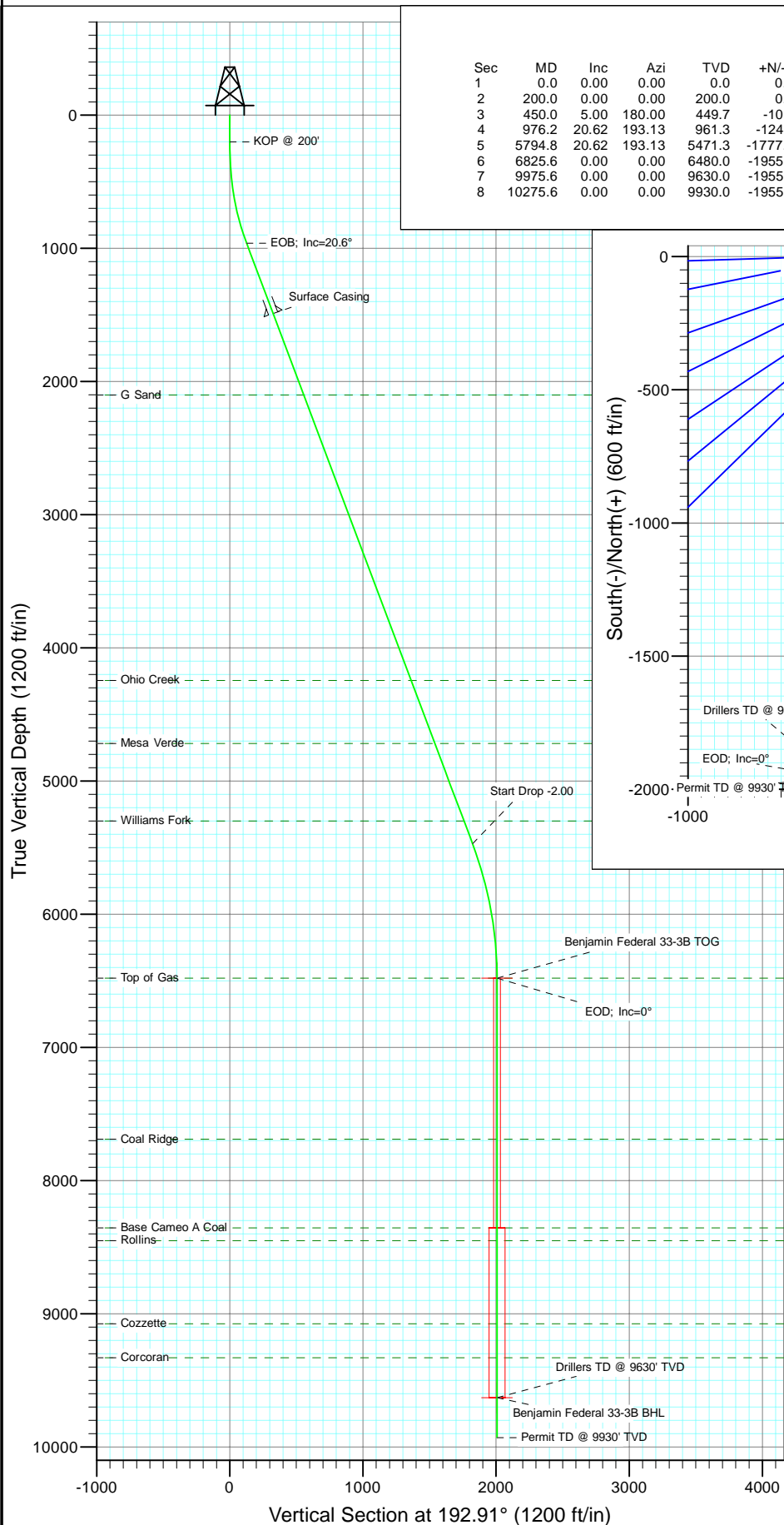


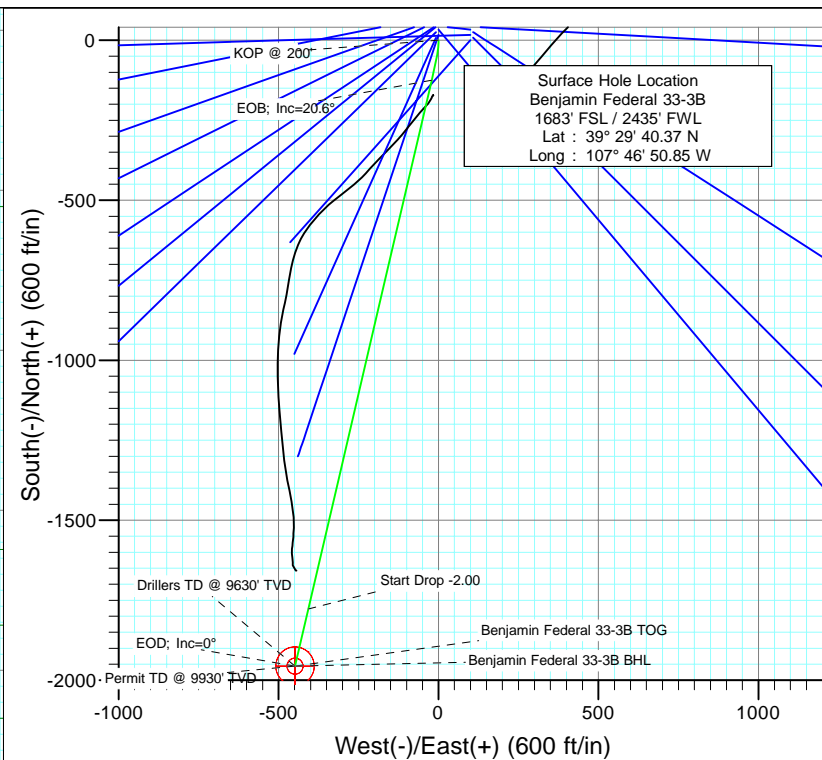


Project: Mamm Creek  
Site: K28NW Pad  
Well: Benjamin Federal 33-3B  
Wellbore: DD  
Design: Plan #1



#### SECTION DETAILS

Sec	MD	Inc	Azi	TVD	+N/-S	+E/-W	Dleg	TFace	Vsect	Target
1	0.0	0.00	0.00	0.0	0.0	0.0	0.00	0.00	0.0	
2	200.0	0.00	0.00	200.0	0.0	0.0	0.00	0.00	0.0	
3	450.0	5.00	180.00	449.7	-10.9	0.0	2.00	180.00	10.6	
4	976.2	20.62	193.13	961.3	-124.8	-21.2	3.00	17.10	126.4	
5	5794.8	20.62	193.13	5471.3	-1777.1	-406.7	0.00	0.00	1823.0	
6	6825.6	0.00	0.00	6480.0	-1955.8	-448.4	2.00	180.00	2006.5	Benjamin Federal 33-3B TOG
7	9975.6	0.00	0.00	9630.0	-1955.8	-448.4	0.00	0.00	2006.5	Benjamin Federal 33-3B BHL
8	10275.6	0.00	0.00	9930.0	-1955.8	-448.4	0.00	0.00	2006.5	



#### FORMATION TOP DETAILS

TVDPath	MDPath	Formation
2101.0	2193.9	G Sand
4245.0	4484.6	Ohio Creek
4717.0	4988.9	Mesa Verde
5299.0	5610.7	Williams Fork
6480.0	6825.6	Top of Gas
7689.0	8034.6	Coal Ridge
8355.0	8700.6	Base Cameo A Coal
8450.0	8795.6	Rollins
9075.0	9420.6	Cozzette
9330.0	9675.6	Corcoran



Azimuths to True North  
Magnetic North: 10.36°

Magnetic Field  
Strength: 52405.9nT  
Dip Angle: 65.82°  
Date: 6/23/2010  
Model: IGRF200510

Plan #1  
Benjamin Federal 33-3B  
BHL = (265 FNL - 1930 FWL) Job #10xxx: KR  
WELL @ 5965.0ft (Original Well Elev)  
North American Datum 1983  
Well Benjamin Federal 33-3B, True North

Type	Target	Azimuth	Origin	Type	N/S	E/W	From	TVD
Target	Benjamin Federal 33-3B BHL	192.91	Slot	0.0	0.0	0.0		0.0
Name	TVD	+N/-S	+E/-W	Latitude	Longitude			
Benjamin Federal 33-3B BHL	9630.0	-1955.8	-448.4	39° 29' 21.04 N	107° 46' 56.57 W			

# Cathedral Energy Services

## Planning Report

<b>Database:</b>	EDM 5000.1 US Multi Users DB	<b>Local Co-ordinate Reference:</b>	Well Benjamin Federal 33-3B
<b>Company:</b>	EnCana Oil & Gas (USA) Inc	<b>TVD Reference:</b>	WELL @ 5965.0ft (Original Well Elev)
<b>Project:</b>	Mamm Creek	<b>MD Reference:</b>	WELL @ 5965.0ft (Original Well Elev)
<b>Site:</b>	K28NW Pad	<b>North Reference:</b>	True
<b>Well:</b>	Benjamin Federal 33-3B	<b>Survey Calculation Method:</b>	Minimum Curvature
<b>Wellbore:</b>	DD		
<b>Design:</b>	Plan #1		

Project	Mamm Creek		
Map System:	US State Plane 1983	System Datum:	Mean Sea Level
Geo Datum:	North American Datum 1983		
Map Zone:	Colorado Central Zone		

Site		K28NW Pad			
Site Position:		Northing:	1,613,160.16 ft	Latitude:	39.494711
From:	Lat/Long	Easting:	2,356,412.22 ft	Longitude:	-107.780819
Position Uncertainty:	0.0 ft	Slot Radius:	13.200 in	Grid Convergence:	-1.44 °

Well	Benjamin Federal 33-3B					
Well Position	+N/-S	0.0 ft	Northing:	1,613,100.28 ft	Latitude:	39.494547
	+E/-W	0.0 ft	Easting:	2,356,418.56 ft	Longitude:	-107.780792
Position Uncertainty		0.0 ft	Wellhead Elevation:	ft	Ground Level:	5,943.0 ft

Wellbore	DD				
Magnetics	Model Name	Sample Date	Declination (°)	Dip Angle (°)	Field Strength (nT)
	IGRF200510	6/23/2010	10.36	65.82	52,406

Design	Plan #1			
Audit Notes:				
Version:	Phase:	PLAN	Tie On Depth:	0.0
Vertical Section:	Depth From (TVD) (ft)	+N/-S (ft)	+E/-W (ft)	Direction (°)
	0.0	0.0	0.0	192.91

Plan Sections										
Measured Depth (ft)	Inclination (°)	Azimuth (°)	Vertical Depth (ft)	+N/-S (ft)	+E/-W (ft)	Dogleg Rate (°/100ft)	Build Rate (°/100ft)	Turn Rate (°/100ft)	TFO (°)	Target
0.0	0.00	0.00	0.0	0.0	0.0	0.00	0.00	0.00	0.00	
200.0	0.00	0.00	200.0	0.0	0.0	0.00	0.00	0.00	0.00	
450.0	5.00	180.00	449.7	-10.9	0.0	2.00	2.00	0.00	180.00	
976.2	20.62	193.13	961.3	-124.8	-21.2	3.00	2.97	2.50	17.10	
5,794.8	20.62	193.13	5,471.3	-1,777.1	-406.7	0.00	0.00	0.00	0.00	
6,825.6	0.00	0.00	6,480.0	-1,955.8	-448.4	2.00	-2.00	0.00	180.00	Benjamin Federal 33-
9,975.6	0.00	0.00	9,630.0	-1,955.8	-448.4	0.00	0.00	0.00	0.00	Benjamin Federal 33-
10,275.6	0.00	0.00	9,930.0	-1,955.8	-448.4	0.00	0.00	0.00	0.00	

# Cathedral Energy Services

## Planning Report

<b>Database:</b>	EDM 5000.1 US Multi Users DB	<b>Local Co-ordinate Reference:</b>	Well Benjamin Federal 33-3B
<b>Company:</b>	EnCana Oil & Gas (USA) Inc	<b>TVD Reference:</b>	WELL @ 5965.0ft (Original Well Elev)
<b>Project:</b>	Mamm Creek	<b>MD Reference:</b>	WELL @ 5965.0ft (Original Well Elev)
<b>Site:</b>	K28NW Pad	<b>North Reference:</b>	True
<b>Well:</b>	Benjamin Federal 33-3B	<b>Survey Calculation Method:</b>	Minimum Curvature
<b>Wellbore:</b>	DD		
<b>Design:</b>	Plan #1		

### Planned Survey

Measured Depth (ft)	Inclination (°)	Azimuth (°)	Vertical Depth (ft)	+N/-S (ft)	+E/-W (ft)	Vertical Section (ft)	Dogleg Rate (°/100ft)	Build Rate (°/100ft)	Comments / Formations
0.0	0.00	0.00	0.0	0.0	0.0	0.0	0.00	0.00	
100.0	0.00	0.00	100.0	0.0	0.0	0.0	0.00	0.00	
200.0	0.00	0.00	200.0	0.0	0.0	0.0	0.00	0.00	KOP @ 200'
300.0	2.00	180.00	300.0	-1.7	0.0	1.7	2.00	2.00	
400.0	4.00	180.00	399.8	-7.0	0.0	6.8	2.00	2.00	
450.0	5.00	180.00	449.7	-10.9	0.0	10.6	2.00	2.00	
500.0	6.45	183.93	499.4	-15.9	-0.2	15.5	3.00	2.90	
600.0	9.39	188.13	598.5	-29.6	-1.7	29.2	3.00	2.95	
700.0	12.37	190.33	696.7	-48.2	-4.8	48.0	3.00	2.97	
800.0	15.35	191.68	793.7	-71.7	-9.4	72.0	3.00	2.98	
900.0	18.34	192.61	889.4	-100.0	-15.5	100.9	3.00	2.99	
976.2	20.62	193.13	961.3	-124.8	-21.2	126.3	3.00	2.99	EOB; Inc=20.6°
1,000.0	20.62	193.13	983.5	-132.9	-23.1	134.7	0.00	0.00	
1,100.0	20.62	193.13	1,077.1	-167.2	-31.1	169.9	0.00	0.00	
1,200.0	20.62	193.13	1,170.7	-201.5	-39.1	205.1	0.00	0.00	
1,300.0	20.62	193.13	1,264.3	-235.8	-47.1	240.4	0.00	0.00	
1,400.0	20.62	193.13	1,357.9	-270.1	-55.1	275.6	0.00	0.00	
1,500.0	20.62	193.13	1,451.5	-304.4	-63.1	310.8	0.00	0.00	
1,540.0	20.62	193.13	1,489.0	-318.1	-66.3	324.9	0.00	0.00	Surface Casing
1,600.0	20.62	193.13	1,545.1	-338.7	-71.1	346.0	0.00	0.00	
1,700.0	20.62	193.13	1,638.7	-373.0	-79.1	381.2	0.00	0.00	
1,800.0	20.62	193.13	1,732.3	-407.3	-87.1	416.4	0.00	0.00	
1,900.0	20.62	193.13	1,825.9	-441.5	-95.1	451.6	0.00	0.00	
2,000.0	20.62	193.13	1,919.5	-475.8	-103.1	486.8	0.00	0.00	
2,100.0	20.62	193.13	2,013.1	-510.1	-111.1	522.1	0.00	0.00	
2,193.9	20.62	193.13	2,101.0	-542.3	-118.6	555.1	0.00	0.00	G Sand
2,200.0	20.62	193.13	2,106.7	-544.4	-119.1	557.3	0.00	0.00	
2,300.0	20.62	193.13	2,200.3	-578.7	-127.1	592.5	0.00	0.00	
2,400.0	20.62	193.13	2,293.9	-613.0	-135.1	627.7	0.00	0.00	
2,500.0	20.62	193.13	2,387.5	-647.3	-143.1	662.9	0.00	0.00	
2,600.0	20.62	193.13	2,481.1	-681.6	-151.1	698.1	0.00	0.00	
2,700.0	20.62	193.13	2,574.7	-715.9	-159.1	733.3	0.00	0.00	
2,800.0	20.62	193.13	2,668.3	-750.2	-167.1	768.5	0.00	0.00	
2,900.0	20.62	193.13	2,761.9	-784.4	-175.1	803.7	0.00	0.00	
3,000.0	20.62	193.13	2,855.5	-818.7	-183.1	839.0	0.00	0.00	
3,100.0	20.62	193.13	2,949.1	-853.0	-191.1	874.2	0.00	0.00	
3,200.0	20.62	193.13	3,042.7	-887.3	-199.1	909.4	0.00	0.00	
3,300.0	20.62	193.13	3,136.2	-921.6	-207.1	944.6	0.00	0.00	
3,400.0	20.62	193.13	3,229.8	-955.9	-215.1	979.8	0.00	0.00	
3,500.0	20.62	193.13	3,323.4	-990.2	-223.1	1,015.0	0.00	0.00	
3,600.0	20.62	193.13	3,417.0	-1,024.5	-231.1	1,050.2	0.00	0.00	
3,700.0	20.62	193.13	3,510.6	-1,058.8	-239.1	1,085.4	0.00	0.00	
3,800.0	20.62	193.13	3,604.2	-1,093.1	-247.1	1,120.6	0.00	0.00	
3,900.0	20.62	193.13	3,697.8	-1,127.4	-255.1	1,155.9	0.00	0.00	
4,000.0	20.62	193.13	3,791.4	-1,161.6	-263.1	1,191.1	0.00	0.00	
4,100.0	20.62	193.13	3,885.0	-1,195.9	-271.1	1,226.3	0.00	0.00	
4,200.0	20.62	193.13	3,978.6	-1,230.2	-279.1	1,261.5	0.00	0.00	
4,300.0	20.62	193.13	4,072.2	-1,264.5	-287.1	1,296.7	0.00	0.00	
4,400.0	20.62	193.13	4,165.8	-1,298.8	-295.1	1,331.9	0.00	0.00	
4,484.6	20.62	193.13	4,245.0	-1,327.8	-301.9	1,361.7	0.00	0.00	Ohio Creek
4,500.0	20.62	193.13	4,259.4	-1,333.1	-303.1	1,367.1	0.00	0.00	
4,600.0	20.62	193.13	4,353.0	-1,367.4	-311.1	1,402.3	0.00	0.00	

# Cathedral Energy Services

## Planning Report

<b>Database:</b>	EDM 5000.1 US Multi Users DB	<b>Local Co-ordinate Reference:</b>	Well Benjamin Federal 33-3B
<b>Company:</b>	EnCana Oil & Gas (USA) Inc	<b>TVD Reference:</b>	WELL @ 5965.0ft (Original Well Elev)
<b>Project:</b>	Mamm Creek	<b>MD Reference:</b>	WELL @ 5965.0ft (Original Well Elev)
<b>Site:</b>	K28NW Pad	<b>North Reference:</b>	True
<b>Well:</b>	Benjamin Federal 33-3B	<b>Survey Calculation Method:</b>	Minimum Curvature
<b>Wellbore:</b>	DD		
<b>Design:</b>	Plan #1		

Planned Survey									
Measured Depth (ft)	Inclination (°)	Azimuth (°)	Vertical Depth (ft)	+N/-S (ft)	+E/-W (ft)	Vertical Section (ft)	Dogleg Rate (°/100ft)	Build Rate (°/100ft)	Comments / Formations
4,700.0	20.62	193.13	4,446.6	-1,401.7	-319.1	1,437.5	0.00	0.00	
4,800.0	20.62	193.13	4,540.2	-1,436.0	-327.1	1,472.8	0.00	0.00	
4,900.0	20.62	193.13	4,633.8	-1,470.3	-335.1	1,508.0	0.00	0.00	
4,988.9	20.62	193.13	4,717.0	-1,500.7	-342.3	1,539.3	0.00	0.00	Mesa Verde
5,000.0	20.62	193.13	4,727.4	-1,504.5	-343.1	1,543.2	0.00	0.00	
5,100.0	20.62	193.13	4,821.0	-1,538.8	-351.1	1,578.4	0.00	0.00	
5,200.0	20.62	193.13	4,914.6	-1,573.1	-359.1	1,613.6	0.00	0.00	
5,300.0	20.62	193.13	5,008.2	-1,607.4	-367.1	1,648.8	0.00	0.00	
5,400.0	20.62	193.13	5,101.8	-1,641.7	-375.1	1,684.0	0.00	0.00	
5,500.0	20.62	193.13	5,195.4	-1,676.0	-383.2	1,719.2	0.00	0.00	
5,600.0	20.62	193.13	5,288.9	-1,710.3	-391.2	1,754.4	0.00	0.00	
5,610.7	20.62	193.13	5,299.0	-1,714.0	-392.0	1,758.2	0.00	0.00	Williams Fork
5,700.0	20.62	193.13	5,382.5	-1,744.6	-399.2	1,789.7	0.00	0.00	
5,794.8	20.62	193.13	5,471.3	-1,777.1	-406.7	1,823.0	0.00	0.00	Start Drop -2.00
5,800.0	20.51	193.13	5,476.1	-1,778.9	-407.2	1,824.9	2.00	-2.00	
5,900.0	18.51	193.13	5,570.4	-1,811.4	-414.7	1,858.3	2.00	-2.00	
6,000.0	16.51	193.13	5,665.8	-1,840.7	-421.6	1,888.4	2.00	-2.00	
6,100.0	14.51	193.13	5,762.1	-1,866.7	-427.7	1,915.1	2.00	-2.00	
6,200.0	12.51	193.13	5,859.3	-1,889.5	-433.0	1,938.5	2.00	-2.00	
6,300.0	10.51	193.13	5,957.3	-1,908.9	-437.5	1,958.4	2.00	-2.00	
6,400.0	8.51	193.13	6,055.9	-1,925.0	-441.3	1,974.9	2.00	-2.00	
6,500.0	6.51	193.13	6,155.1	-1,937.8	-444.2	1,988.0	2.00	-2.00	
6,600.0	4.51	193.13	6,254.6	-1,947.1	-446.4	1,997.6	2.00	-2.00	
6,700.0	2.51	193.13	6,354.4	-1,953.1	-447.8	2,003.8	2.00	-2.00	
6,800.0	0.51	193.13	6,454.4	-1,955.6	-448.4	2,006.4	2.00	-2.00	
6,825.6	0.00	0.00	6,480.0	-1,955.8	-448.4	2,006.5	2.00	-2.00	EOD; Inc=0° - Top of Gas - Benjamin Federal 3
6,900.0	0.00	0.00	6,554.4	-1,955.8	-448.4	2,006.5	0.00	0.00	
7,000.0	0.00	0.00	6,654.4	-1,955.8	-448.4	2,006.5	0.00	0.00	
7,100.0	0.00	0.00	6,754.4	-1,955.8	-448.4	2,006.5	0.00	0.00	
7,200.0	0.00	0.00	6,854.4	-1,955.8	-448.4	2,006.5	0.00	0.00	
7,300.0	0.00	0.00	6,954.4	-1,955.8	-448.4	2,006.5	0.00	0.00	
7,400.0	0.00	0.00	7,054.4	-1,955.8	-448.4	2,006.5	0.00	0.00	
7,500.0	0.00	0.00	7,154.4	-1,955.8	-448.4	2,006.5	0.00	0.00	
7,600.0	0.00	0.00	7,254.4	-1,955.8	-448.4	2,006.5	0.00	0.00	
7,700.0	0.00	0.00	7,354.4	-1,955.8	-448.4	2,006.5	0.00	0.00	
7,800.0	0.00	0.00	7,454.4	-1,955.8	-448.4	2,006.5	0.00	0.00	
7,900.0	0.00	0.00	7,554.4	-1,955.8	-448.4	2,006.5	0.00	0.00	
8,000.0	0.00	0.00	7,654.4	-1,955.8	-448.4	2,006.5	0.00	0.00	
8,034.6	0.00	0.00	7,689.0	-1,955.8	-448.4	2,006.5	0.00	0.00	Coal Ridge
8,100.0	0.00	0.00	7,754.4	-1,955.8	-448.4	2,006.5	0.00	0.00	
8,200.0	0.00	0.00	7,854.4	-1,955.8	-448.4	2,006.5	0.00	0.00	
8,300.0	0.00	0.00	7,954.4	-1,955.8	-448.4	2,006.5	0.00	0.00	
8,400.0	0.00	0.00	8,054.4	-1,955.8	-448.4	2,006.5	0.00	0.00	
8,500.0	0.00	0.00	8,154.4	-1,955.8	-448.4	2,006.5	0.00	0.00	
8,600.0	0.00	0.00	8,254.4	-1,955.8	-448.4	2,006.5	0.00	0.00	
8,700.0	0.00	0.00	8,354.4	-1,955.8	-448.4	2,006.5	0.00	0.00	
8,700.6	0.00	0.00	8,355.0	-1,955.8	-448.4	2,006.5	0.00	0.00	Base Cameo A Coal
8,795.6	0.00	0.00	8,450.0	-1,955.8	-448.4	2,006.5	0.00	0.00	Rollins
8,800.0	0.00	0.00	8,454.4	-1,955.8	-448.4	2,006.5	0.00	0.00	
8,900.0	0.00	0.00	8,554.4	-1,955.8	-448.4	2,006.5	0.00	0.00	
9,000.0	0.00	0.00	8,654.4	-1,955.8	-448.4	2,006.5	0.00	0.00	
9,100.0	0.00	0.00	8,754.4	-1,955.8	-448.4	2,006.5	0.00	0.00	

# Cathedral Energy Services

## Planning Report

<b>Database:</b>	EDM 5000.1 US Multi Users DB	<b>Local Co-ordinate Reference:</b>	Well Benjamin Federal 33-3B
<b>Company:</b>	EnCana Oil & Gas (USA) Inc	<b>TVD Reference:</b>	WELL @ 5965.0ft (Original Well Elev)
<b>Project:</b>	Mamm Creek	<b>MD Reference:</b>	WELL @ 5965.0ft (Original Well Elev)
<b>Site:</b>	K28NW Pad	<b>North Reference:</b>	True
<b>Well:</b>	Benjamin Federal 33-3B	<b>Survey Calculation Method:</b>	Minimum Curvature
<b>Wellbore:</b>	DD		
<b>Design:</b>	Plan #1		

### Planned Survey

Measured Depth (ft)	Inclination (°)	Azimuth (°)	Vertical Depth (ft)	+N/-S (ft)	+E/-W (ft)	Vertical Section (ft)	Dogleg Rate (°/100ft)	Build Rate (°/100ft)	Comments / Formations
9,200.0	0.00	0.00	8,854.4	-1,955.8	-448.4	2,006.5	0.00	0.00	
9,300.0	0.00	0.00	8,954.4	-1,955.8	-448.4	2,006.5	0.00	0.00	
9,400.0	0.00	0.00	9,054.4	-1,955.8	-448.4	2,006.5	0.00	0.00	
9,420.6	0.00	0.00	9,075.0	-1,955.8	-448.4	2,006.5	0.00	0.00	Cozzette
9,500.0	0.00	0.00	9,154.4	-1,955.8	-448.4	2,006.5	0.00	0.00	
9,600.0	0.00	0.00	9,254.4	-1,955.8	-448.4	2,006.5	0.00	0.00	
9,675.6	0.00	0.00	9,330.0	-1,955.8	-448.4	2,006.5	0.00	0.00	Corcoran
9,700.0	0.00	0.00	9,354.4	-1,955.8	-448.4	2,006.5	0.00	0.00	
9,800.0	0.00	0.00	9,454.4	-1,955.8	-448.4	2,006.5	0.00	0.00	
9,900.0	0.00	0.00	9,554.4	-1,955.8	-448.4	2,006.5	0.00	0.00	
9,975.6	0.00	0.00	9,630.0	-1,955.8	-448.4	2,006.5	0.00	0.00	Drillers TD @ 9630' TVD - Benjamin Federal 33
10,000.0	0.00	0.00	9,654.4	-1,955.8	-448.4	2,006.5	0.00	0.00	
10,100.0	0.00	0.00	9,754.4	-1,955.8	-448.4	2,006.5	0.00	0.00	
10,200.0	0.00	0.00	9,854.4	-1,955.8	-448.4	2,006.5	0.00	0.00	
10,275.6	0.00	0.00	9,930.0	-1,955.8	-448.4	2,006.5	0.00	0.00	Permit TD @ 9930' TVD

### Targets

Target Name	Dip Angle (°)	Dip Dir. (°)	TVD (ft)	+N/-S (ft)	+E/-W (ft)	Northing (ft)	Easting (ft)	Latitude	Longitude
- hit/miss target									
- Shape									
Benjamin Federal 33-3B - plan hits target center - Circle (radius 60.0)	0.00	0.00	9,630.0	-1,955.8	-448.4	1,611,156.40	2,355,921.18	39.489178	-107.782381
Benjamin Federal 33-3B - plan hits target center - Circle (radius 25.0)	0.00	0.00	6,480.0	-1,955.8	-448.4	1,611,156.40	2,355,921.18	39.489178	-107.782381

### Casing Points

Measured Depth (ft)	Vertical Depth (ft)	Name	Casing Diameter (in)	Hole Diameter (in)
1,540.0	1,489.0	Surface Casing		

# Cathedral Energy Services

## Planning Report

**Database:** EDM 5000.1 US Multi Users DB  
**Company:** EnCana Oil & Gas (USA) Inc  
**Project:** Mamm Creek  
**Site:** K28NW Pad  
**Well:** Benjamin Federal 33-3B  
**Wellbore:** DD  
**Design:** Plan #1

**Local Co-ordinate Reference:** Well Benjamin Federal 33-3B  
**TVD Reference:** WELL @ 5965.0ft (Original Well Elev)  
**MD Reference:** WELL @ 5965.0ft (Original Well Elev)  
**North Reference:** True  
**Survey Calculation Method:** Minimum Curvature

### Formations

Measured Depth (ft)	Vertical Depth (ft)	Name	Lithology	Dip (°)	Dip Direction (°)
2,193.9	2,101.0	G Sand			
4,484.6	4,245.0	Ohio Creek			
4,988.9	4,717.0	Mesa Verde			
5,610.7	5,299.0	Williams Fork			
6,825.6	6,480.0	Top of Gas			
8,034.6	7,689.0	Coal Ridge			
8,700.6	8,355.0	Base Cameo A Coal			
8,795.6	8,450.0	Rollins			
9,420.6	9,075.0	Cozzette			
9,675.6	9,330.0	Corcoran			

### Plan Annotations

Measured Depth (ft)	Vertical Depth (ft)	Local Coordinates		Comment
		+N/-S (ft)	+E/-W (ft)	
200.0	200.0	0.0	0.0	KOP @ 200'
976.2	961.3	-10.9	0.0	EOB; Inc=20.6°
5,794.8	5,471.3	-124.8	-21.2	Start Drop -2.00
6,825.6	6,480.0	-1,777.1	-406.7	EOD; Inc=0°
9,975.6	9,630.0	-1,955.8	-448.4	Drillers TD @ 9630' TVD
10,275.6	9,930.0	-1,955.8	-448.4	Permit TD @ 9930' TVD