

IMPROVEMENT NOTE:

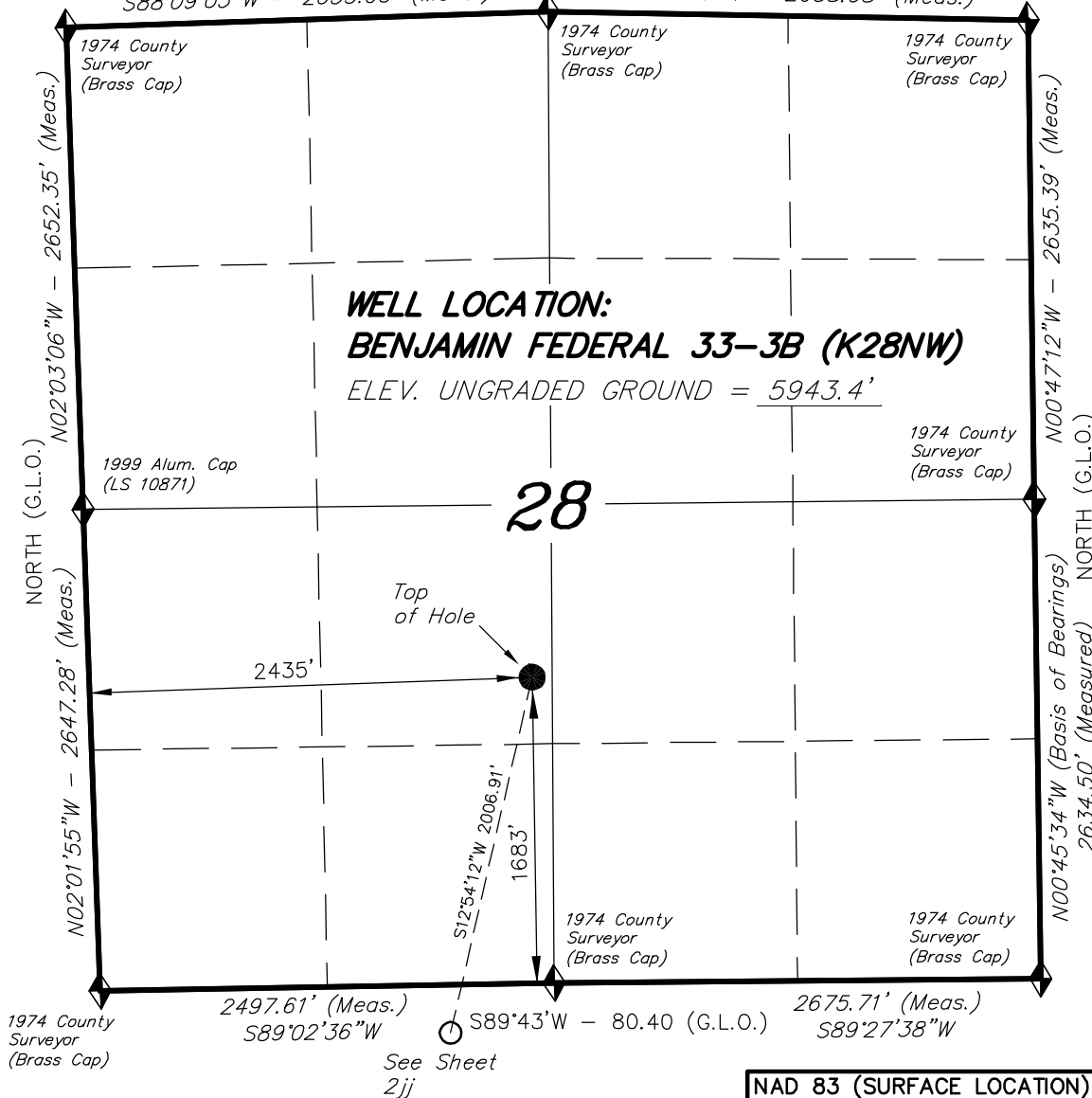
See addendum to legal plat (sheet 2u)  
for visible improvements within 400' of  
the proposed well pad.

**T6S, R93W, 6th P.M.**

N89°34'W - 80.10 (G.L.O.)

N89°00'39"W - 2638.68' (Meas.)

S88°09'05"W - 2653.65' (Meas.)



◆ = SECTION CORNERS LOCATED

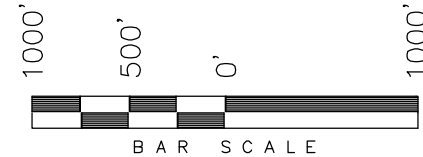
Basis of elevation is the Rifle 2 Triangulation  
Station. 39°31'53.80" N Lat. & 107°47'07.78" W  
Long. (NAD 83). Elevation = 5323.1' (NAVD88).

**NAD 83 (SURFACE LOCATION)**

LATITUDE = 39°29'40.37"  
(39.494547)  
LONGITUDE = 107°46'50.85"  
(107.780792)

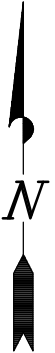
**ENCANA OIL & GAS (USA) INC**

WELL LOCATION, BENJAMIN FEDERAL  
33-3B (K28NW), LOCATED AS SHOWN  
IN THE NE 1/4 SW 1/4 OF SECTION  
28, T6S, R93W, 6th P.M. GARFIELD  
COUNTY, COLORADO.



**NOTES:**

1. Well footages are measured at right angles to the Section Lines.
2. Bearings are based on Global Positioning Satellite observations.
3. G.P.S. Operator: C.D. Slaugh, (PDOP) = 2.8



THIS IS TO CERTIFY THAT THE ABOVE PLAT WAS  
PREPARED FROM FIELD NOTES OF ACTUAL SURVEYS  
MADE BY ME OR UNDER MY SUPERVISION. THE LOCATION  
HAS BEEN STAKED ON THE GROUND AS SHOWN ON THE  
PLAT, AND THAT THE SAME ARE TRUE AND CORRECT  
TO THE BEST OF MY KNOWLEDGE AND BELIEF.

*Seany C. Slaugh*  
# 30125  
REGISTERED LAND SURVEYOR  
REGISTRATION No. 30125  
STATE OF COLORADO

**TRI STATE LAND SURVEYING & CONSULTING**

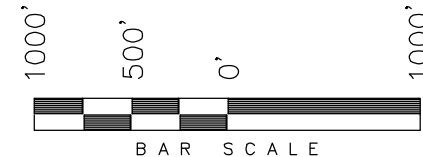
180 NORTH VERNAL AVE. - VERNAL, UTAH 84078  
(435) 781-2501

DATE SURVEYED: 06-11-10	SURVEYED BY: C.D.S.	<b>SHEET</b> <b>2j</b> <b>OF 11</b>
DATE DRAWN: 06-14-10	DRAWN BY: L.C.S.	
REVISED:	SCALE: 1" = 1000'	

**T6S, R93W, 6th P.M.**

**ENCANA OIL & GAS (USA) INC**

TARGET BOTTOM HOLE, BENJAMIN  
FEDERAL 33-3B (K28NW), LOCATED AS  
SHOWN IN THE NE 1/4 NW 1/4 OF  
SECTION 33, T6S, R93W, 6th P.M.  
GARFIELD COUNTY, COLORADO.



**NOTES:**

1. Well footages are measured at right angles to the Section Lines.
2. Bearings are based on Global Positioning Satellite observations.
3. G.P.S. Operator: C.D. Slaugh, (PDOP) = 2.8

THIS IS TO CERTIFY THAT THE ABOVE PLAT WAS  
PREPARED FROM FIELD NOTES OF ADJUTANT SURVEYS  
MADE BY ME OR UNDER MY SUPERVISION. THE LOCATION  
HAS BEEN STAKED ON THE GROUND AS SHOWN ON THE  
PLAT, AND THAT THE SAME ARE TRUE AND CORRECT  
TO THE BEST OF MY KNOWLEDGE AND BELIEF.

*[Signature]*  
# 30125  
REGISTERED LAND SURVEYOR  
REGISTRATION No. 30125  
STATE OF COLORADO

**TRI STATE LAND SURVEYING & CONSULTING**

180 NORTH VERNAL AVE. - VERNAL, UTAH 84078  
(435) 781-2501

DATE SURVEYED: 06-11-10	SURVEYED BY: C.D.S.	<b>SHEET</b> <b>2jj</b> <b>OF 11</b>
DATE DRAWN: 06-14-10	DRAWN BY: L.C.S.	
REVISED:	SCALE: 1" = 1000'	

1974 County  
Surveyor  
(Brass Cap)

S89°02'36"W  
2497.61' (Meas.)

1974 County  
Surveyor  
(Brass Cap)

S89°27'38"W  
2675.71' (Meas.)

1974 County  
Surveyor  
(Brass Cap)

1930'

265'

S89°43'W - 80.40 (G.L.O.)

Bottom  
of Hole

**TARGET BOTTOM HOLE:  
BENJAMIN FEDERAL 33-3B (K28NW)**

**33**

PLS 9009  
Brass Cap

Corner  
Missing

NORTH (G.L.O.)  
N00°41'45"E - 5248.89' (Meas.)

N00°42'24"W - 2636.36' (Meas.)  
NORTH (G.L.O.)

1947  
Brass Cap

1947  
Brass Cap

Spike  
in Road

S89°24'13"W - 2637.45' (Meas.)  
S89°26'W - 39.94 (G.L.O.)

N89°39'05"E - 2662.93' (Meas.)  
S89°28'W - 40.12 (G.L.O.)

◆ = SECTION CORNERS LOCATED

Basis of elevation is the Rifle 2 Triangulation  
Station. 39°31'53.80" N Lat. & 107°47'07.78" W  
Long. (NAD 83). Elevation = 5323.1' (NAVD88).