

KING SURVEYORS, INC. 650 E. GARDEN DR. WINDSOR, CO 80550

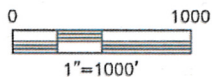
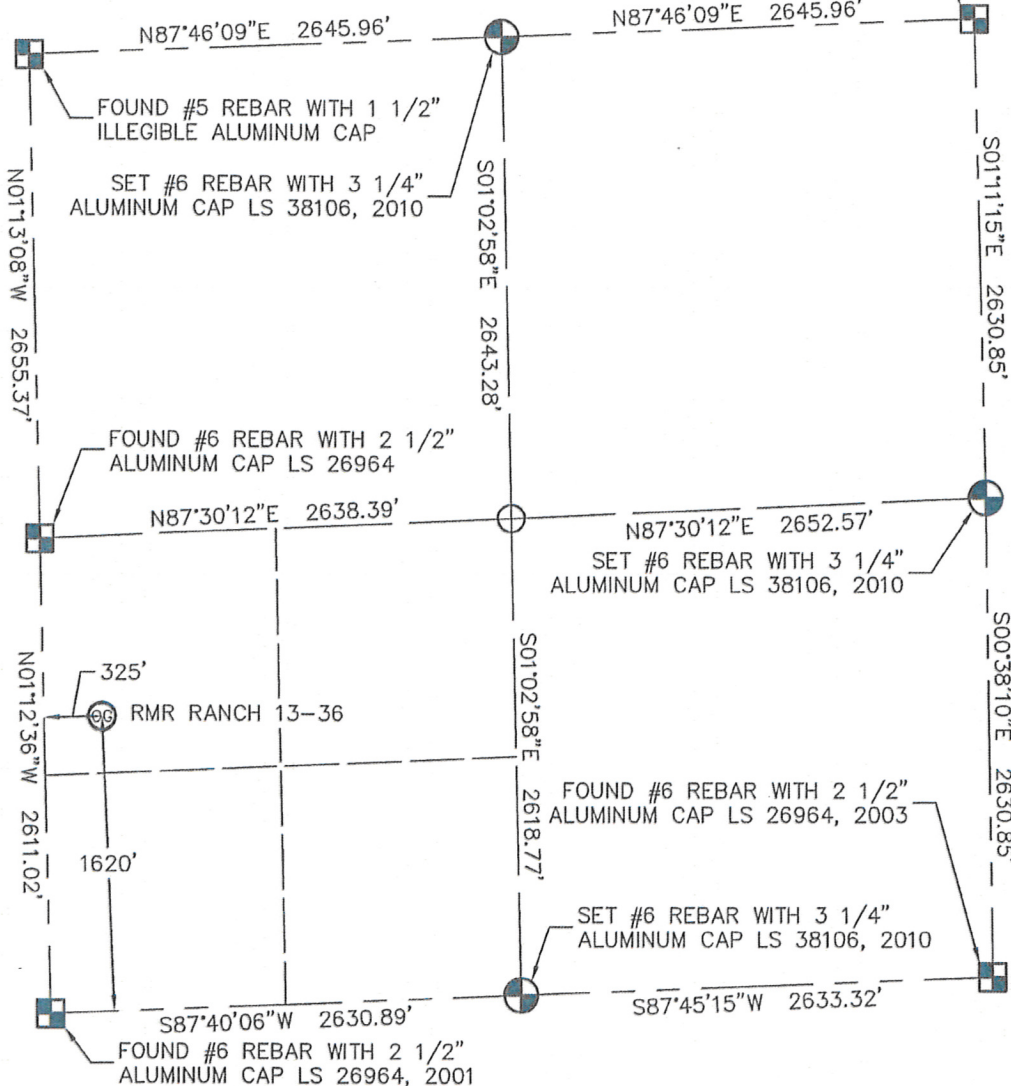
WELL LOCATION CERTIFICATE

RMR RANCH 13-36

THIS MAP DOES NOT REPRESENT A BOUNDARY SURVEY

SECTION: 36
TOWNSHIP: 2N
RANGE: 47W

FOUND #5 REBAR WITH 1 1/2"
ALUMINUM CAP LS 17??



In accordance with a request from DAVID LEDET with NOBLE ENERGY INC. King Surveyors Inc. has determined the surface location of RMR RANCH 13-36 to be 1620' from the SOUTH line and 325' from the WEST line, as measured at right angle, from the section lines of Section 36, Township 2 North, Range 47 West of the Sixth Principal Meridian, County of Yuma, State of Colorado.

I hereby state that this Well Location Certificate was prepared by me, or under my direct supervision, that the fieldwork was completed on 9-25-2010, for and on behalf of NOBLE ENERGY INC. That this is not a Land Survey Plat or an Improvement Survey Plat, and that it is not to be relied upon for establishment of fence, building, or other future improvement lines.

NOTE:

- 1) Bearings shown are Grid Bearings of the Colorado State Plane Coordinate System, North Zone, North American Datum 1983/2007. The lineal dimensions as contained herein are based upon the "U.S. Survey Foot."
- 2) Ground elevations are based on an observed GPS elevation (NAVD 1988 DATUM).
- 3) IMPROVEMENTS: See LOCATION DRAWING exhibit for all visible improvements within 400' of well head.
- 4) SURFACE USE: CROP FIELD
- 5) OPERATOR: STEVE SYRING

SURFACE LOCATION

LATITUDE: 40.09442°N
LONGITUDE: 102.58566°W
PDOP: 1.9
ELEV: 3996'
1/4, 1/4: NW1/4 SW1/4
NEAREST PROPERTY LINE: 765' NORTHEAST

LEGEND

- = FOUND ALIQUOT MONUMENT AS DESCRIBED
- = CALCULATED POSITION
- = SET ALIQUOT MONUMENT AS DESCRIBED

NOTE

According to Colorado law, you must commence any legal action based upon any defect in this W.L.C. within three years after you discover such defect. In no event, may any action based upon any defect in this survey be commenced more than ten years after the date of the certificate shown hereon. (13-80-105 C.R.S.)

Michael Chad Dillka - On Behalf Of King Surveyors, Inc.
Colorado Licensed Professional Land Surveyor #38106
PROJECT#: 2010378
10/1/2010