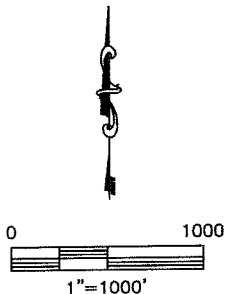
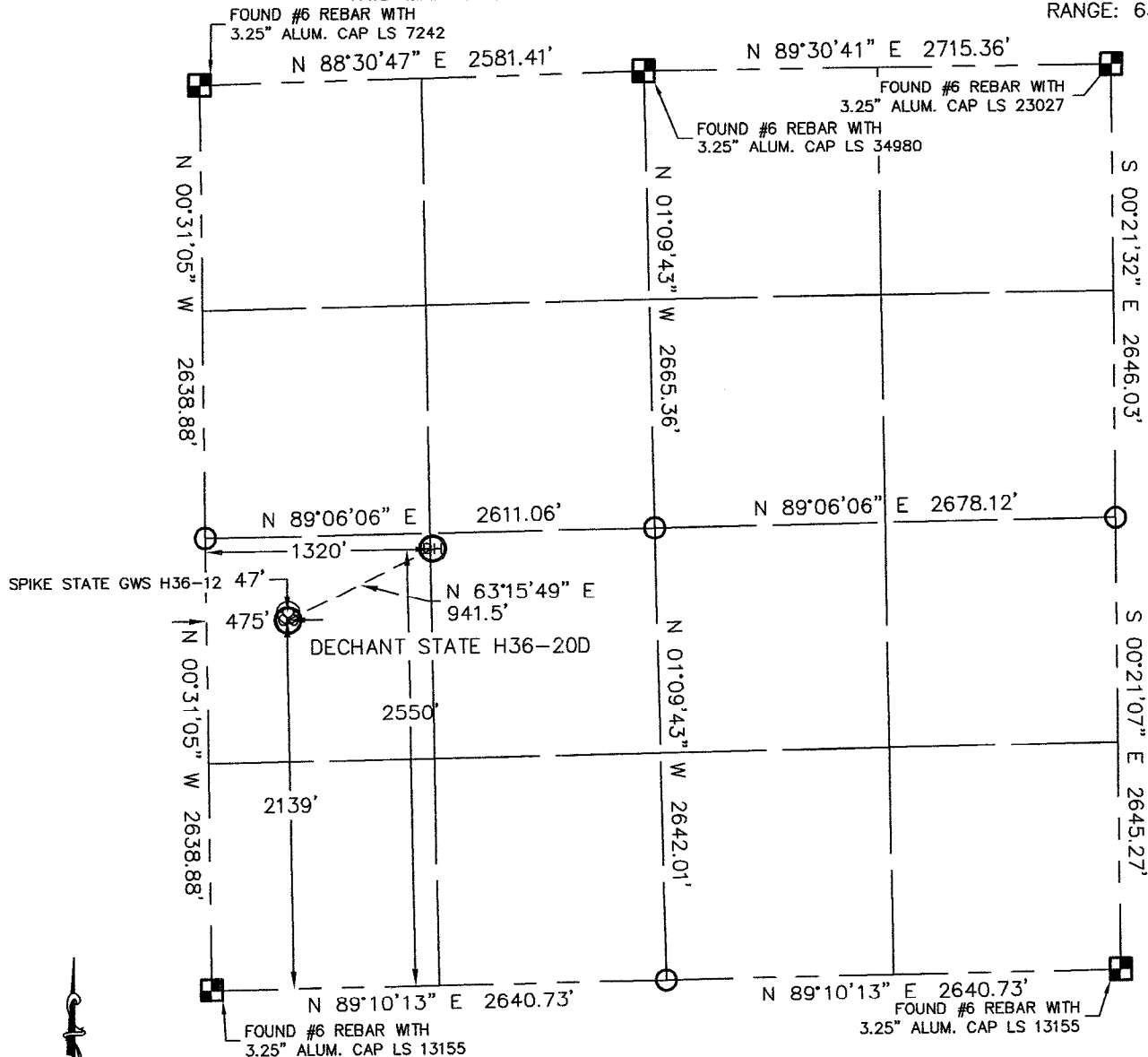


WELL LOCATION CERTIFICATE

SECTION: 36
TOWNSHIP: 3N
RANGE: 65W

THIS MAP DOES NOT REPRESENT A BOUNDARY SURVEY



In accordance with a request from SEAN CASPER with Noble Energy Inc. Lat40°, LLC has determined the surface location of the DECHANT STATE H36-20D to be 2139' from the SOUTH line and 475' from the WEST line and the bottom hole to be 2550' from the SOUTH line and 1320' from the WEST line as measured at right angles from the section line of Section 36, Township 3 North, Range 65 West of the Sixth Principal Meridian, County of Weld, State of Colorado.

I hereby state that this Well Location Certificate was prepared by me, or under my direct supervision, that the fieldwork was completed on 4-15-10, for and on behalf of Noble Energy Inc. That this is not a Land Survey Plat or an Improvement Survey Plat, and that it is not to be relied upon for establishment of fence, building, or other future improvement lines.

NOTE:

- 1) Bearings shown are Grid Bearings of the Colorado State Plane Coordinate System, North Zone, North American Datum 1983/2007. The lineal dimensions as contained herein are based upon the "U.S. Survey Foot."
- 2) Ground elevations are based on an observed GPS elevation (NAVD 1988 DATUM).
- 3) NEAREST EXISTING WELL: SPIKE STATE GWS H36-12 47'
- 4) IMPROVEMENTS: See VISIBLE IMPROVEMENTS exhibit for all visible improvements within 400' of disturbed area.
- 5) SURFACE USE: CROP, DRYLAND (PIVOT REMOVED)

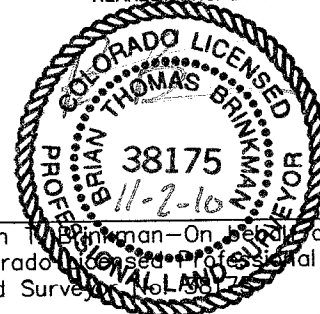
SURFACE LOCATION	BOTTOM HOLE
LATITUDE: 40.18017°N	LATITUDE: 40.18131°N
LONGITUDE: 104.62008°W	LONGITUDE: 104.61705°W
PDOP: 1.3	
ELEV: 4831	
1/4, 1/4: NW1/4SW1/4	
NEAREST PROPERTY LINE: 475' WEST	

NOTE

According to Colorado law, you must commence any legal action based upon any defect in this W.L.C. within three years after you discover such defect. In no event, may any action based upon any defect in this survey be commenced more than ten years after the date of the certificate shown hereon. (13-80-105 C.R.S.)

LEGEND

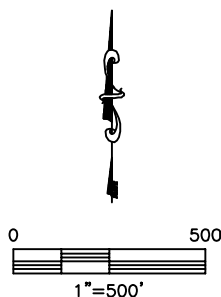
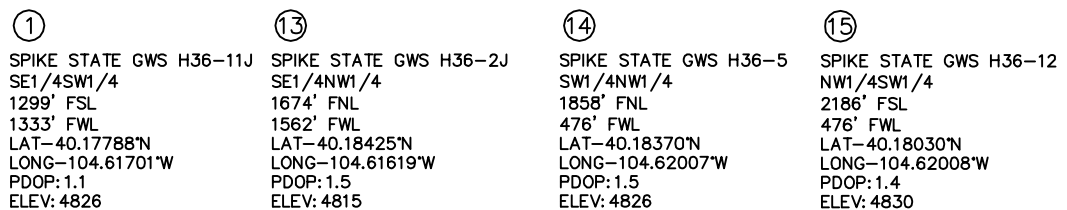
- = ALIQUOT MONUMENT AS DESCRIBED
 = CALCULATED POSITION



Brian T. Brinkman—On behalf of Lat40°, LLC
Colorado Licensed Professional
Land Surveyor No. 38175

PROJECT#: 2010008

SECTION: 36
TOWNSHIP: 3N
RANGE: 65W



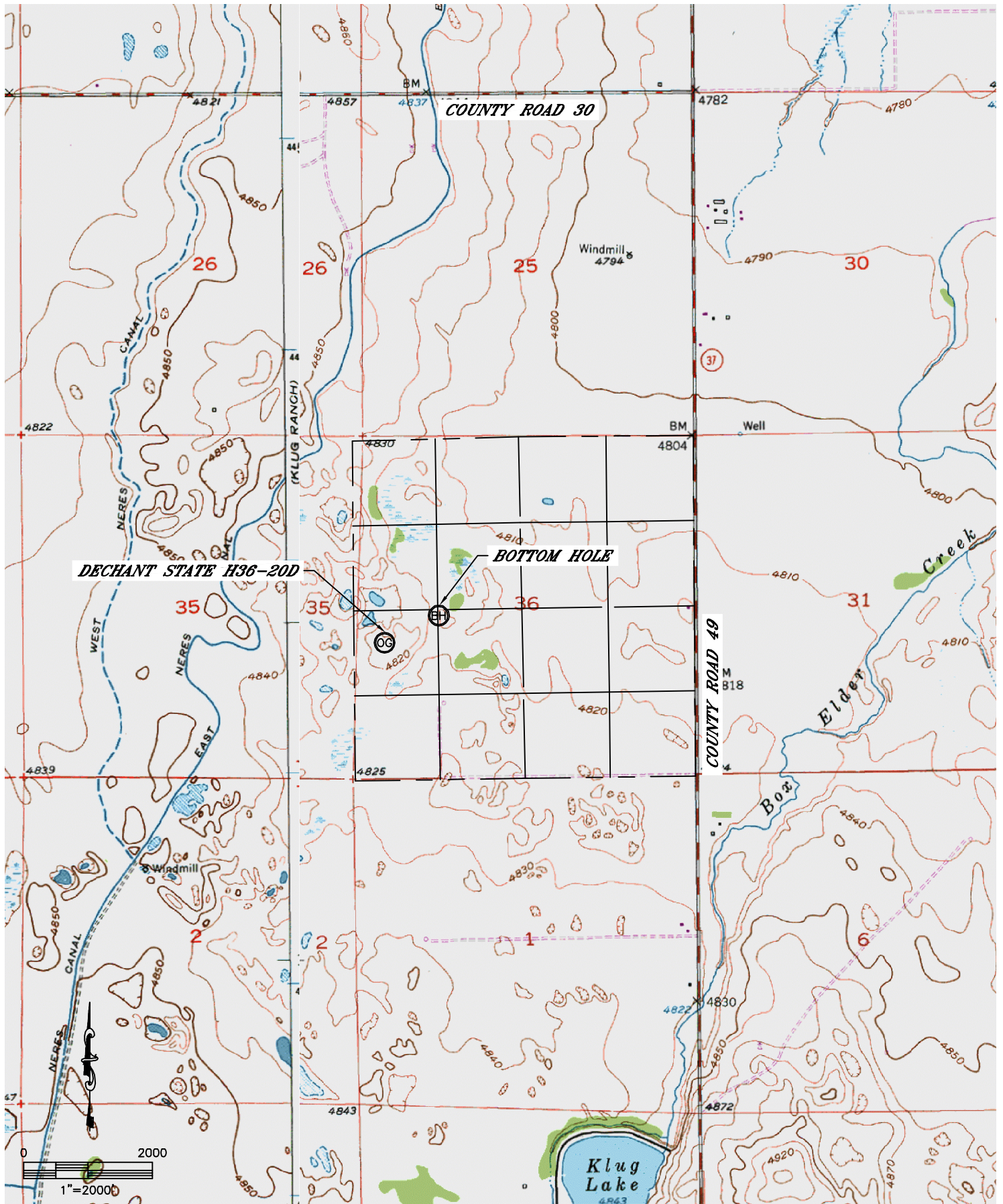
Lat40°, LLC

1635 Foxtrail Drive, Suite 325

Loveland, CO 80538

ACCESS ROAD MAP

SECTION: 36
TOWNSHIP: 3N
RANGE: 65W










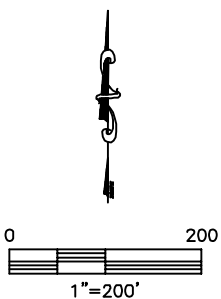
VISIBLE IMPROVEMENTS

SECTION: 36
TOWNSHIP: 3N
RANGE: 65W



IMPROVEMENTS:

-  SPIKE STATE GWS H36-12 47' N
-  PROPERTY LINE 475' W
-  FENCE 477' W, 345' SW
-  PROPOSED PIVOT TRACK 119', 275' SW
-  PROPOSED PIVOT TRACK 37', 193', 349', 505' NE
-  FIELD ROAD 48' N, 456' W
-  MONITORING WELL 416', 341' W



HYDROLOGY MAP

SECTION: 36
TOWNSHIP: 3N
RANGE: 65W

