

Steil Surveying Services, LLC

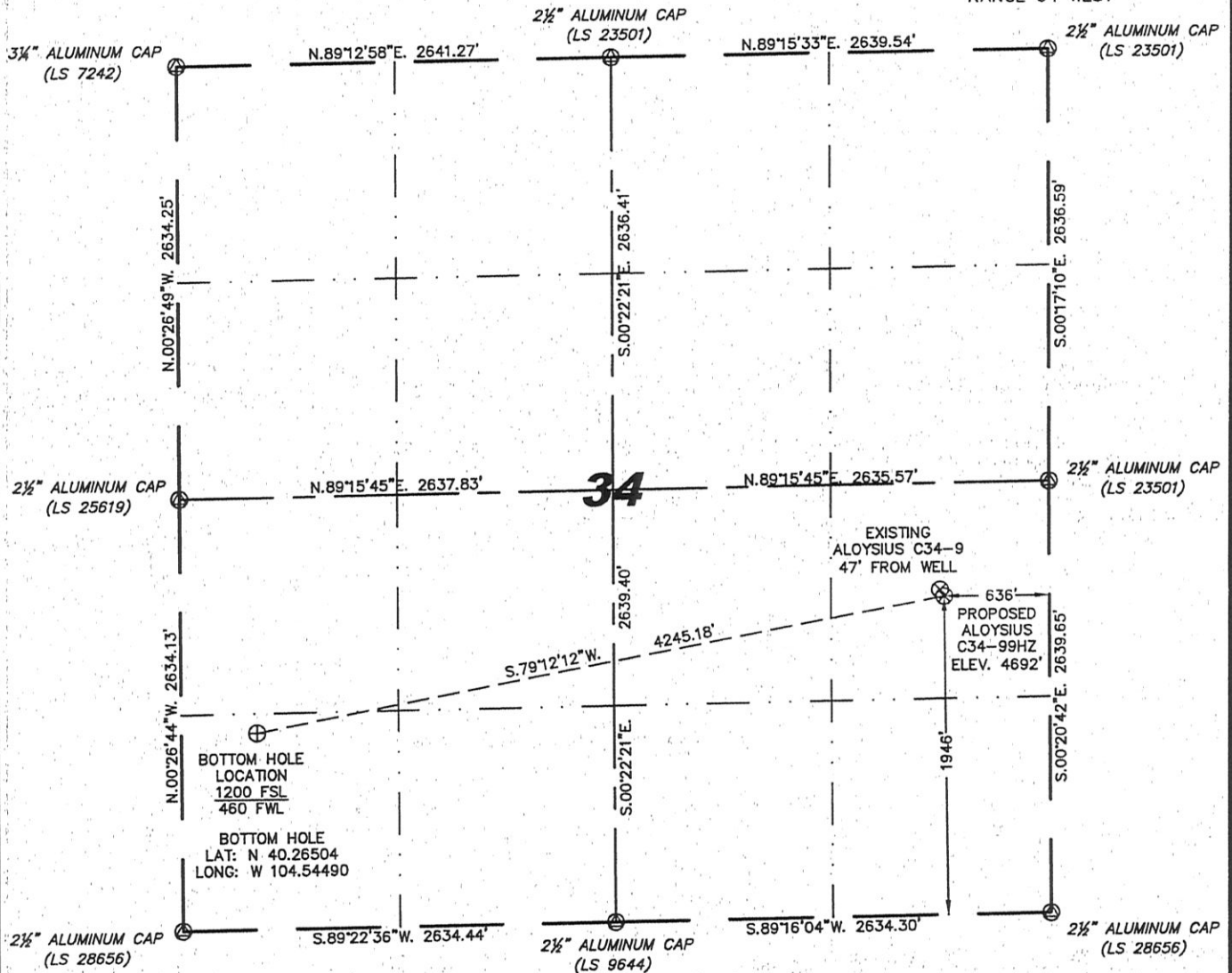
1102 West 19th Street P.O. BOX 2073

Cheyenne, Wyoming 82009

WELL LOCATION CERTIFICATE

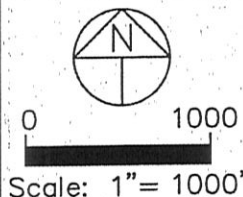
THIS MAP DOES NOT REPRESENT A BOUNDARY SURVEY

SECTION 34
TOWNSHIP 4 NORTH
RANGE 64 WEST



IN ACCORDANCE WITH A REQUEST FROM BRIAN DeROSE - NOBLE ENERGY INC., STEIL SURVEYING SERVICES, LLC HAS DETERMINED THE LOCATION OF THE ALOYSIUS C34-99HZ WELL TO BE 1946' FSL, 636' FEL, AS MEASURED AT NINETY (90) DEGREES FROM THE SECTION LINES, SECTION 34, TOWNSHIP 4 NORTH, RANGE 64 WEST, 6TH PRINCIPLE MERIDIAN, WELD COUNTY, COLORADO.

I HEREBY CERTIFY THAT THIS WELL LOCATION CERTIFICATE WAS PREPARED BY ME, OR UNDER MY DIRECT SUPERVISION, THAT THE FIELD WORK WAS COMPLETED ON 09/16/2010, FOR AND ON BEHALF OF NOBLE ENERGY INC., THAT IT IS NOT A LAND SURVEY PLAT OR AN IMPROVEMENT SURVEY PLAT, AND THAT IT IS NOT TO BE RELIED UPON FOR ESTABLISHMENT OF FENCE, BUILDING, OR OTHER FUTURE IMPROVEMENT LINES.



NOTES:

- 1) BASIS OF BEARINGS FOR THIS MAP ARE BASED UPON GPS OBSERVATIONS MADE ON 09/15/2009 BETWEEN MONUMENTS LOCATED AT THE SOUTHEAST SECTION CORNER AND THE NORTHEAST SECTION CORNER OF SAID SECTION AND WITH ALL BEARINGS SHOWN HEREON RELATIVE THERETO.
- 2) COORDINATES SHOWN ARE COLORADO STATE PLANE (NORTH ZONE) NAD 83.
- 3) ELEVATIONS ARE BASED UPON NGS OPUS SOLUTION NAVD 88 DATUM.
- 4) THE NEAREST EXISTING WELL IS: ALOYSIUS C34-9, 47' NORTHWEST.
- 5) SEE VISIBLE IMPROVEMENTS EXHIBIT FOR ALL IMPROVEMENTS WITHIN 600'.
- 6) THE LOCATION FALLS IN PASTURE LAND.

LATITUDE & LONGITUDE (NAD 83 SURFACE HOLE):

LATITUDE: N 40.26710°
LONGITUDE: W 104.52991°
PDOP: 2.6
QUARTER-QUARTER: NE/4SE/4
NEAREST PROPERTY LINE: 636' TO THE EAST

LEGEND

- (A) FOUND SURVEY MONUMENT PER MONUMENT RECORD - EXCEPTIONS NOTED.
- (C) CALCULATED DIMENSION

NOTICE: According to Colorado law you MUST commence any legal action based upon any defect in this W.L.C. within three years after you first discover such defect. In no event may any action based upon any defect in this W.L.C. be commenced more than ten years from this sold date of the certification shown hereon.



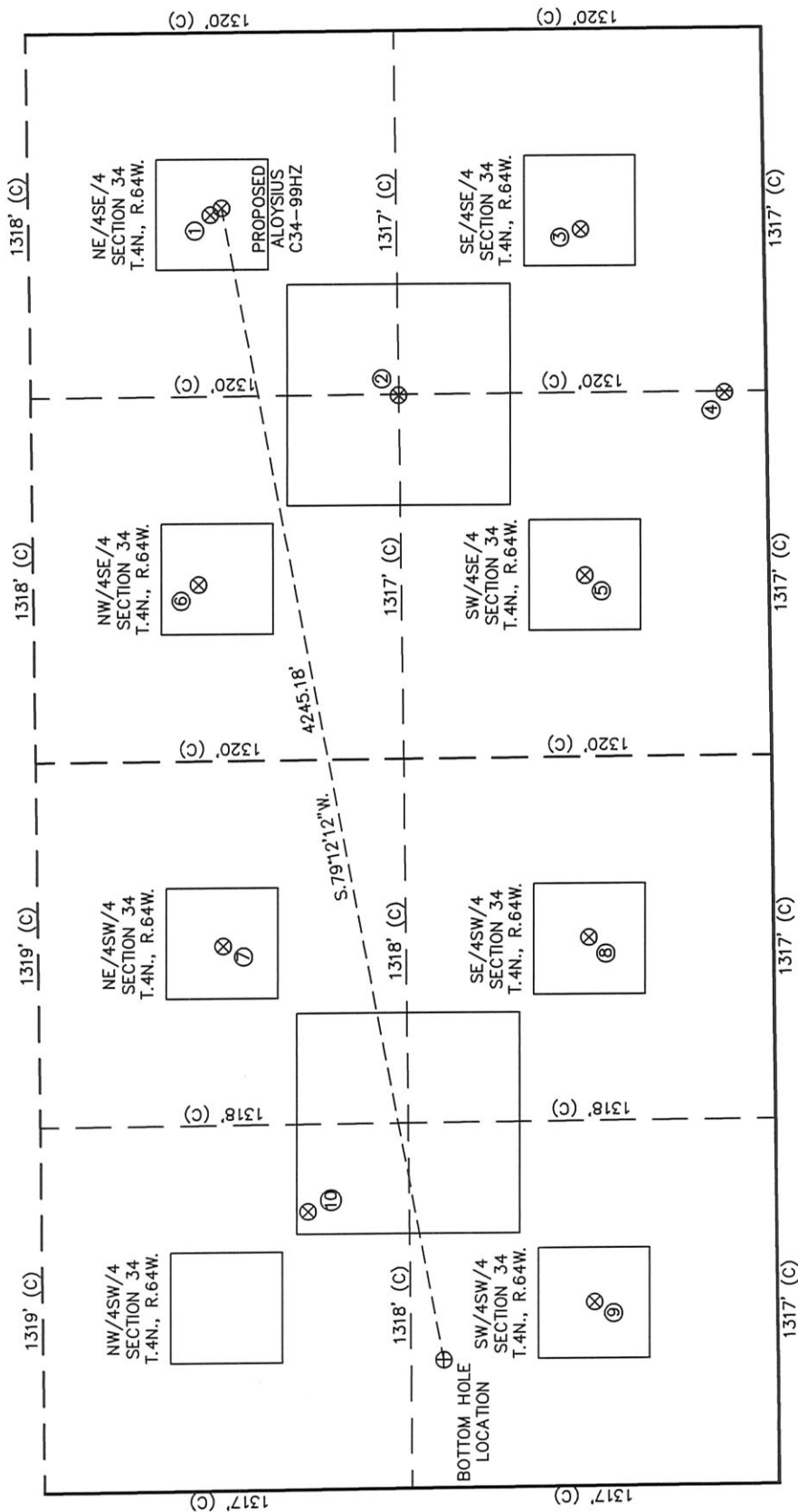
Completed 09/20/2010

David C. Holmes
Professional Land Surveyor Registration No. 32828
State of Colorado

JOB #:10086

SKETCH - ALOYSIUS C34-99HZ

SECTION 34
TOWNSHIP 4 NORTH
RANGE 64 WEST



- | | | | | | | | | | | | | | | | | | | | |
|---|--|---|--|---|---|---|--|---|---|---|---|---|--|---|--|---|---|---|---|
| ① | ALOYSIUS
C34-9
NE/SE SEC. 34
1987' FSL
660' FEL
N 40.26721
W 104.53000
PDOP 2.5 | ② | ALOYSIUS
C34-23
NW/SE SEC. 34
1321' FSL
1320' FEL
EL 4692'
N 40.26538
W 104.53238
PDOP 2.4 | ③ | ALOYSIUS
C34-2
SE/SE SEC. 34
658' FSL
726' FEL
EL 4694'
N 40.26356
W 104.53026
PDOP 2.3 | ④ | GUTTERSEN
DD3-27
SW/SE SEC. 34
151' FSL
1320' FEL
EL 4696'
N 40.26217
W 104.53240
PDOP 2.2 | ⑤ | ALOYSIUS
C34-15
SW/SE SEC. 34
660' FSL
1979' FEL
EL 4695'
N 40.26356
W 104.53475
PDOP 2.5 | ⑥ | ALOYSIUS
C34-5
NW/SE SEC. 34
2047' FSL
1997' FEL
EL 4694'
N 40.26737
W 104.53479
PDOP 2.5 | ⑦ | ALOYSIUS
C34-11
NE/SE SEC. 34
1975' FSL
1967' FSL
EL 4695'
N 40.26717
W 104.53948
PDOP 3.5 | ⑧ | ALOYSIUS
C34-6
SE/SE SEC. 34
662' FSL
1981' FSL
EL 4699'
N 40.26356
W 104.53944
PDOP 2.2 | ⑨ | ALOYSIUS
C34-7
SW/SE SEC. 34
656' FSL
661' FSL
EL 4701'
N 40.26355
W 104.54417
PDOP 2.2 | ⑩ | TWO E RANCHES 1
NW/SW SEC. 34
1681' FSL
1002' FSL
EL 4697'
N 40.26636
W 104.54294
PDOP 1.9 |
|---|--|---|--|---|---|---|--|---|---|---|---|---|--|---|--|---|---|---|---|



0 600

NOTES:

- THIS SKETCH DOES NOT REPRESENT A BOUNDARY SURVEY.
- THE DATUM FOR THE LATITUDES AND LONGITUDES ON THIS SKETCH IS NAD83.

Scale: 1" = 600'