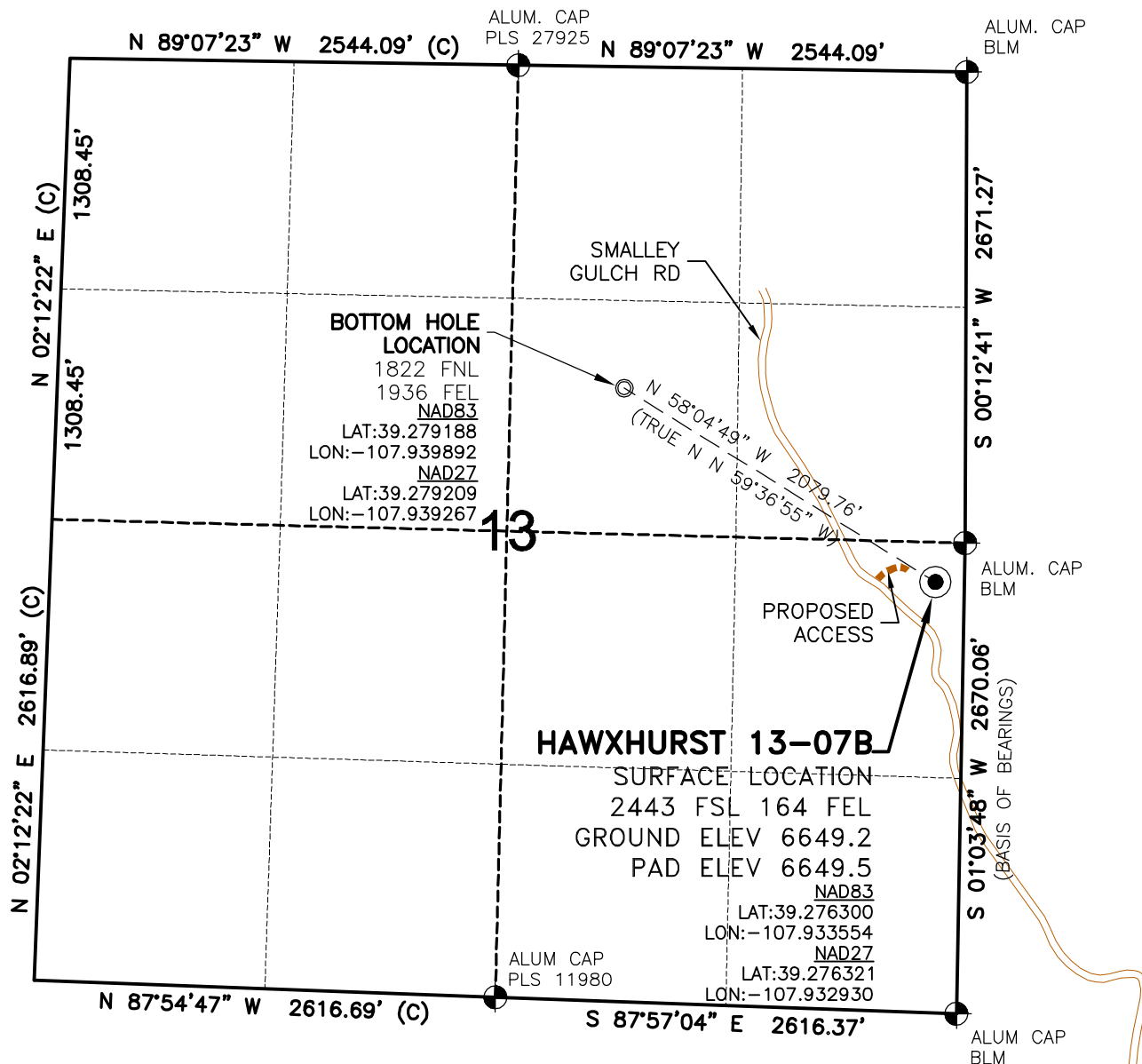


WELL LOCATION MAP

HAWXHURST 13-09 PAD



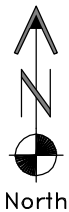
SURVEYOR'S STATEMENT

The undersigned hereby states that the well location shown hereon was staked on the ground based on existing monumentation and/or physical evidence found in the field and is correct to the best of my knowledge, information and belief.

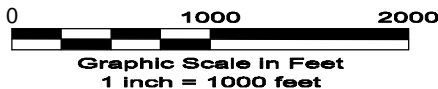
NOTES

- 1.) Horizontal and vertical datum based on Mesa County control point "SN23" with an elevation of 8008.15. NAVD 1988.
 - 2.) All directions, distances, and dimensions shown hereon are based on coordinates from the "Colorado coordinate system of 1983 central zone" (article 52 of title 38, C.R.S.).
 - 3.) All section line dimensions shown hereon are based on field measurements of existing monuments and/or physical evidence found in the field unless otherwise indicated. Refer to land survey plats deposited in Mesa County & BLM Survey.
 - 4.) Physical features shown hereon are for graphical representation only.
 - 5.) See Form 2A for visible improvements within 400' of wellhead.
 - 6.) Distances to nearest section lines are measured perpendicularly.
 - 7.) This is not a land survey nor land survey plat.
 - 8.) Date of Survey 9/29/10; Date of Drawing 9/30/10. REV 0
- PDOP Reading: 2.3 Instrument Operator: DJM

9/30/10



North



GEO SURV

LAND SURVEYING AND MAPPING
 LAFAYETTE - WINTER PARK
 Ph 303 666 0379 Fx 303 665 6320

LARAMIE ENERGY II LLC
HAWXHURST 13-07B

SL NE1/4 SE1/4 SEC. 13 T9S R95W
 BL SW1/4 NE1/4 SEC. 13 T9S R95W
 6th PM MESA COUNTY COLORADO