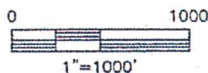
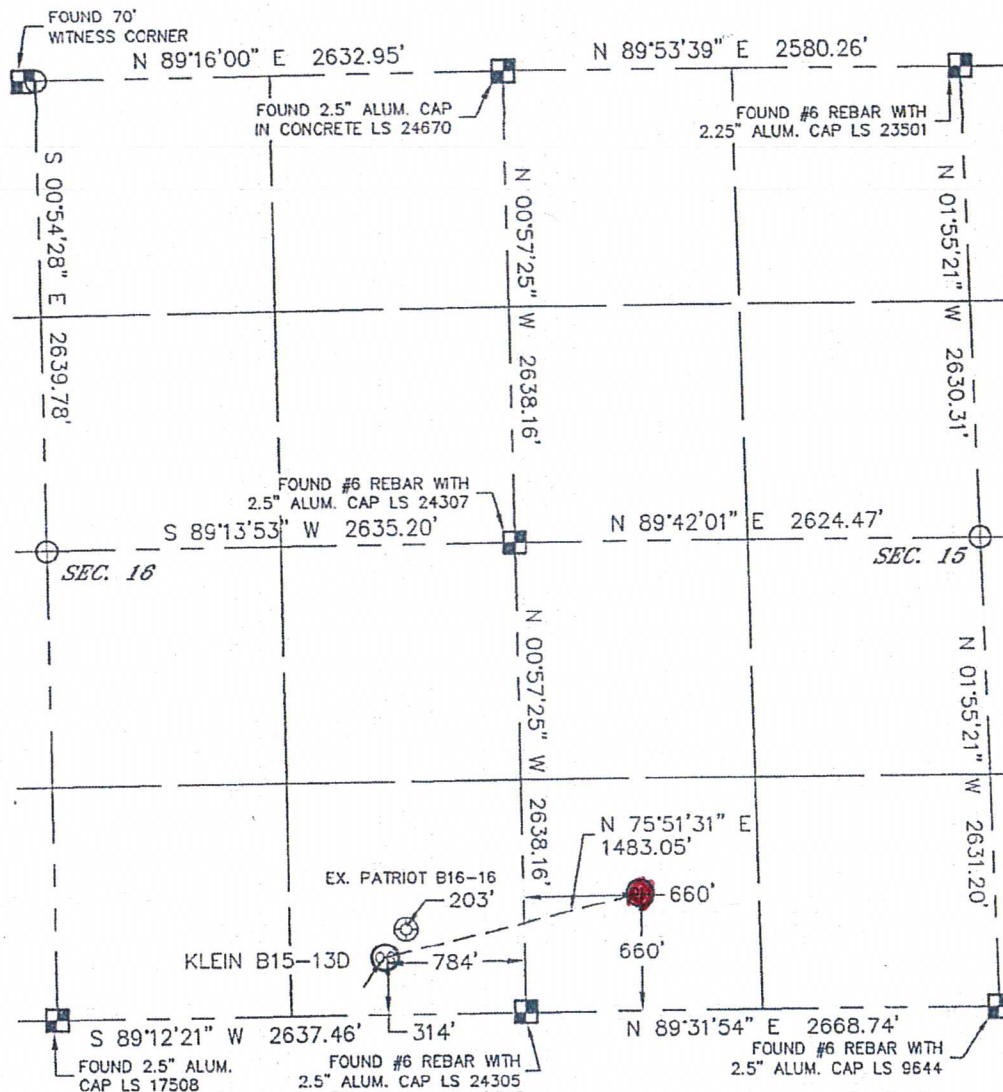


Lat40°, LLC 1635 Foxtrail Drive, Suite 325 Loveland, CO 80538

# WELL LOCATION CERTIFICATE

THIS MAP DOES NOT REPRESENT A BOUNDARY SURVEY

SECTION: 15&16  
TOWNSHIP: 5N  
RANGE: 64W



In accordance with a request from Roger Lowe with Noble Energy Inc., Lat40°, LLC has determined the surface location of the KLEIN B15-13D to be 314' from the SOUTH line and 784' from the EAST line as measured at right angles from the section line of Section 16, Township 5 North, Range 64 West and the bottom hole to be 660' from the SOUTH line and 660' from the WEST line of Section 15, Township 5 North, Range 64 West of the Sixth Principal Meridian, County of Weld, State of Colorado. I hereby state that this Well Location Certificate was prepared by me, or under my direct supervision, that the fieldwork was completed on 8-25-10, for and on behalf of Noble Energy Inc. That this is not a Land Survey Plat or an Improvement Survey Plat, and that it is not to be relied upon for establishment of fence, building, or other future improvement lines.

## NOTE:

- 1) Bearings shown are Grid Bearings of the Colorado State Plane Coordinate System, North Zone, North American Datum 1983/2007. The lineal dimensions as contained herein are based upon the "U.S. Survey Foot."
- 2) Ground elevations are based on an observed GPS elevation (NAVD 1988 DATUM).
- 3) NEAREST EXISTING WELL: PATRIOT B16-16 203'
- 4) IMPROVEMENTS: See LOCATION DRAWING exhibit for all visible improvements within 400' of disturbed area.
- 5) SURFACE USE: RANGELAND
- 6) INSTRUMENT OPERATOR: BRIAN BRINKMAN

## NOTE

According to Colorado law, you must commence any legal action based upon any defect in this W.L.C. within three years after you discover such defect. In no event, may any action based upon any defect in this survey be commenced more than ten years after the date of the certificate shown hereon. (13-80-105 C.R.S.)

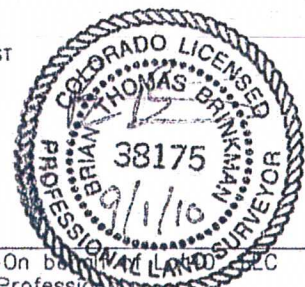
## LEGEND

- = ALIQUOT MONUMENT AS DESCRIBED
- = CALCULATED POSITION

SURFACE LOCATION  
LATITUDE: 40.392967N  
LONGITUDE: 104.548297W  
PDOP: 2.0  
ELEV: 4607  
1/4, 1/4: SE1/4SE1/4

NEAREST PROPERTY LINE: 249' EAST

BOTTOM HOLE  
LATITUDE: 40.393917N  
LONGITUDE: 104.543117W



Brian T. Brinkman—On behalf of  
Colorado Licensed Professional  
Land Surveyor No. 38175

PROJECT#: 2010088

Lat40°, LLC

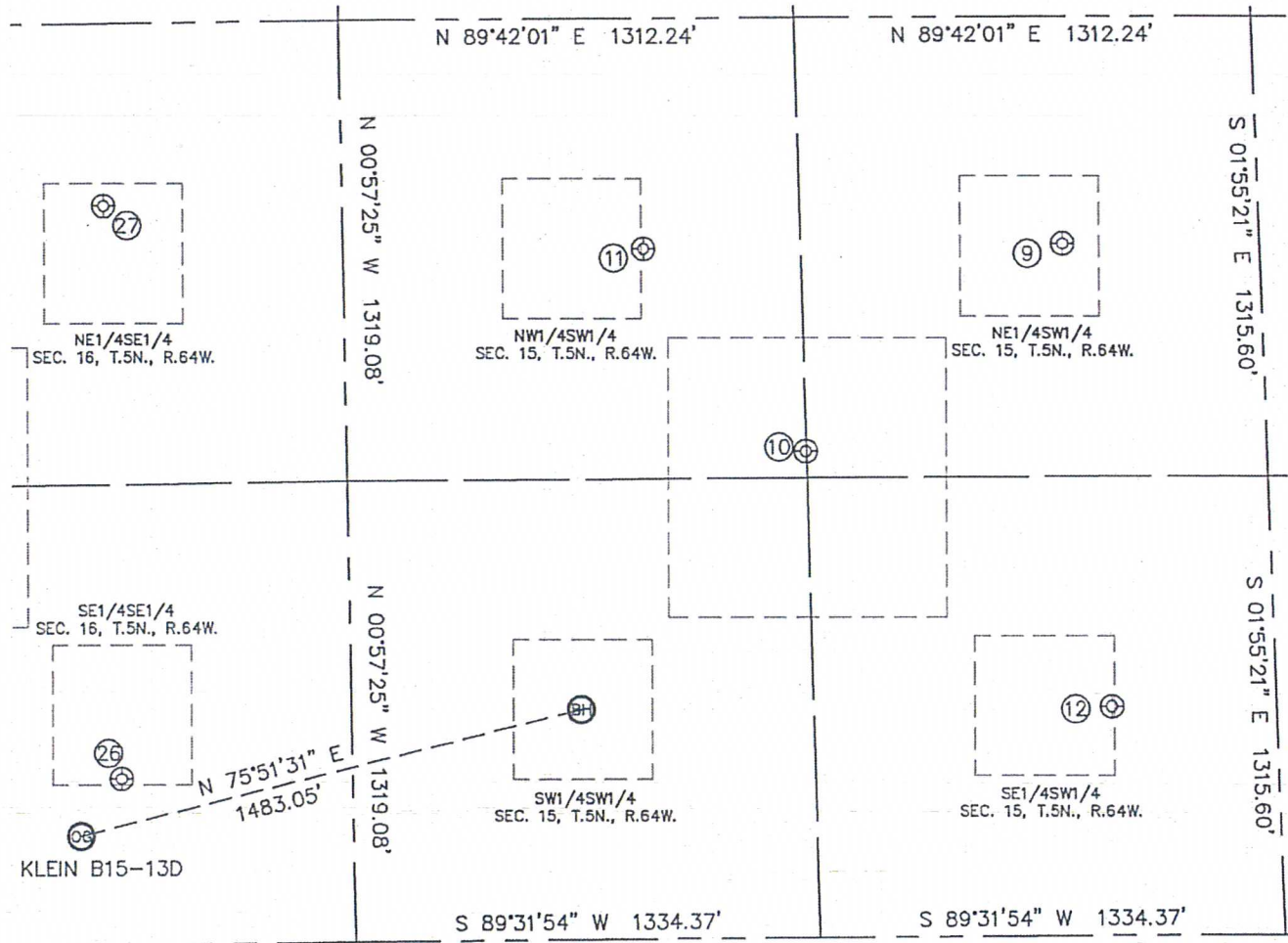
1635 Foxtrail Drive, Suite 325

Loveland, CO 80538

# SITE SKETCH

KLEIN B15-13D

SECTION: 15&16  
TOWNSHIP: 5N  
RANGE: 64W



⑨  
LOUSTELET B15-11  
NE1/4SW1/4  
1981' FSL  
2072' FWL  
LAT-40.39753°N  
LONG-104.53807°W  
PDOP: 1.5  
ELEV: 4576

⑩  
FRENZEL B15-25  
NW1/4SW1/4  
1393' FSL  
1321' FWL  
LAT-40.39592°N  
LONG-104.54075°W  
PDOP: 1.8  
ELEV: 4577

⑪  
LOUSTALET 15-1  
NW1/4SW1/4  
1976' FSL  
865' FWL  
LAT-40.39752°N  
LONG-104.54240°W  
PDOP: 1.8  
ELEV: 4579

⑫  
LOUSTALET B15-14  
SE1/4SW1/4  
656' FSL  
2186' FWL  
LAT-40.39389°N  
LONG-104.53764°W  
PDOP: 1.8  
ELEV: 4574

②⑥  
PATRIOT B16-16  
SE1/4SE1/4  
477' FSL  
664' FEL  
LAT-40.39341°N  
LONG-104.54786°W  
PDOP: 2.4  
ELEV: 4609

②⑦  
PATRIOT B16-9  
NE1/4SE1/4  
2116' FSL  
685' FEL  
LAT-40.39791°N  
LONG-104.54797°W  
PDOP: 2.0  
ELEV: 4607

