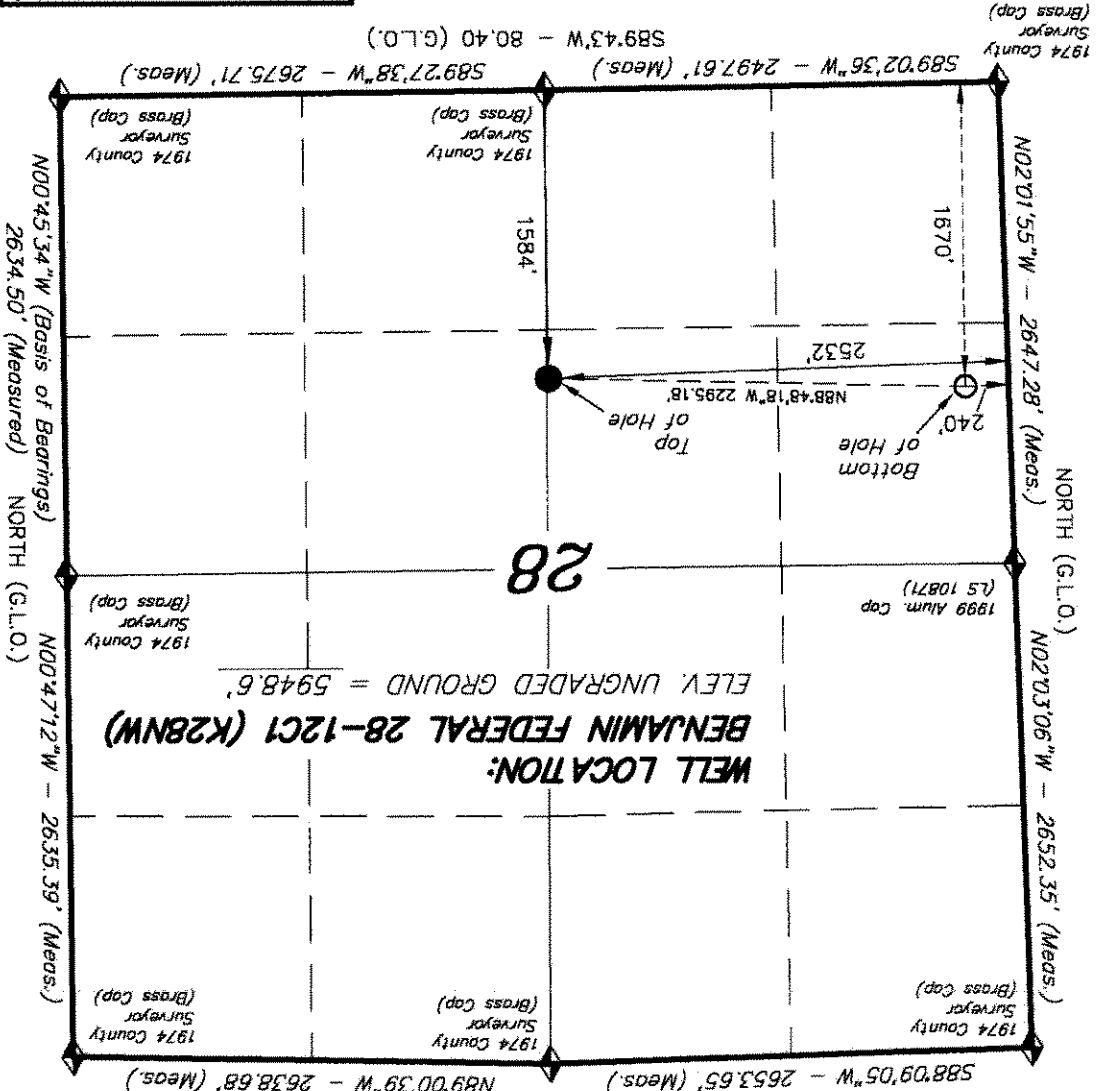


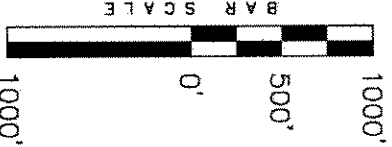
IMPROVEMENT NOTE:  
See addendum to legal plat (sheet 2) for visible improvements within 400' of the proposed well pad.  
**T6S, R93W, 6th P.M.**



**NAD 83 (SURFACE LOCATION)**  
LATITUDE = 39°29'39.40"  
(39.494278)  
LONGITUDE = 107°46'49.58"  
(107.780438)

◆ = SECTION CORNERS LOCATED  
Basis of elevation is the Rifle 2 Triangulation Station. 39°31'53.80" N Lat. & 107°47'07.78" W Long. (NAD 83). Elevation = 5323.1' (NAVD88).

WELL LOCATION, BENJAMIN FEDERAL 28-12C1 (K28NW), LOCATED AS SHOWN IN THE NE 1/4 SW 1/4 OF SECTION 28, T6S, R93W, 6th P.M. GARFIELD COUNTY, COLORADO.



NOTES:  
1. Well footages are measured at right angles to the Section Lines.  
2. Bearings are based on Global Positioning Satellite observations.  
3. The Bottom Hole Bears S88°19'27"W 2295.66' From the Top of Hole.  
4. G.P.S. Operator: C.D. Slough, (PDOP) = 2.8



THIS IS TO CERTIFY THAT THE ABOVE PLAT WAS PREPARED FROM FIELD NOTES OF SURVEYS MADE BY ME OR UNDER MY SUPERVISION. THE LOCATION HAS BEEN STAKED ON THE GROUND AND SHOWN ON THE PLAT, AND THAT THE SAME ARE TRUE AND CORRECT TO THE BEST OF MY KNOWLEDGE AND BELIEF.

REGISTERED LAND SURVEYOR  
REGISTRATION No. 330125  
STATE OF COLORADO  
# 30125

**TRI STATE LAND SURVEYING & CONSULTING**  
180 NORTH VERNAL AVE. - VERNAL, UTAH 84078  
(435) 781-2501

DATE SURVEYED: 06-11-10  
SURVEYED BY: C.D.S.  
DATE DRAWN: 06-14-10  
DRAWN BY: M.W.  
REVISID: L.C.S. 10-25-10  
SCALE: 1" = 1000'  
SHEET 27 OF 11

