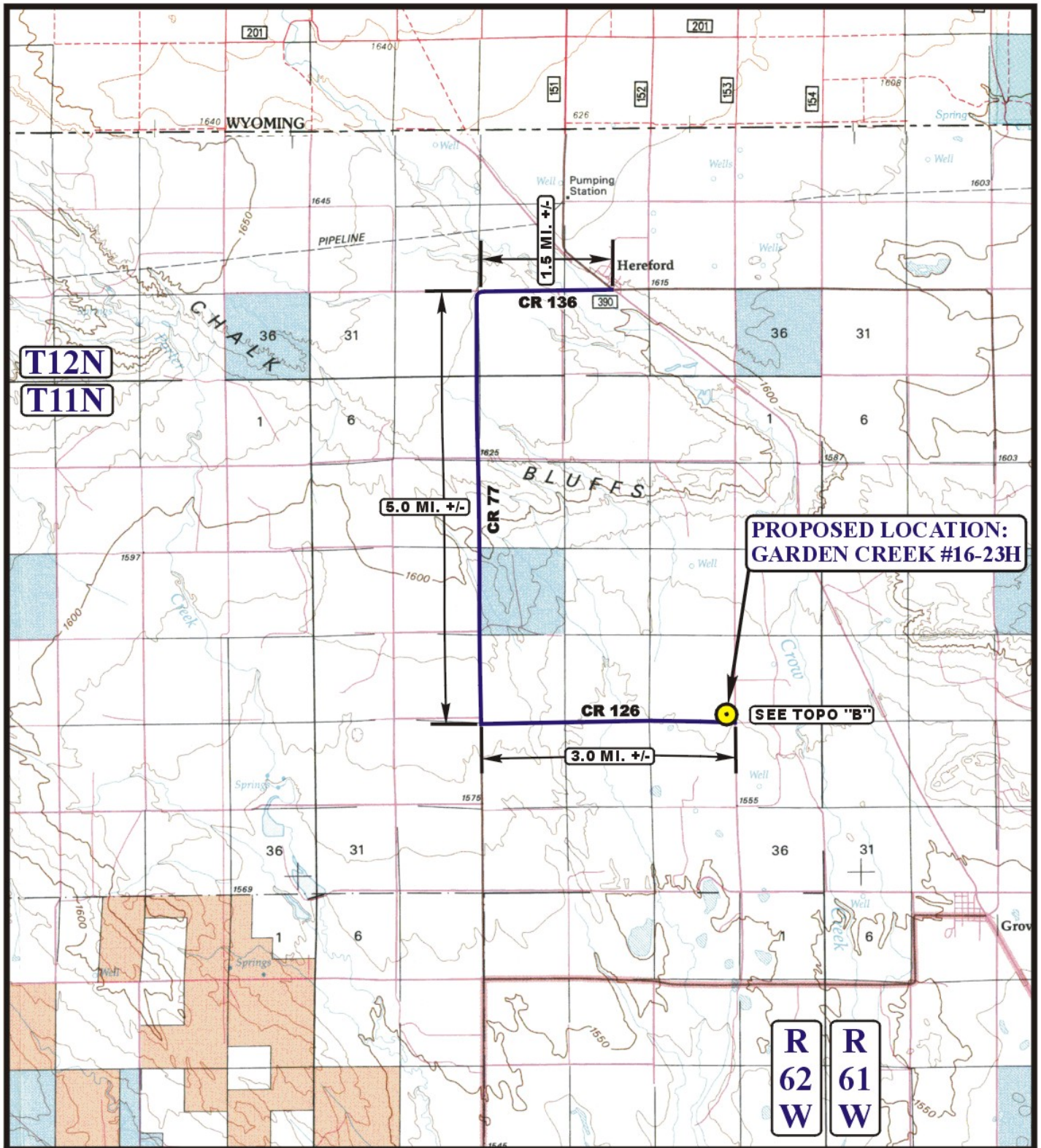


EOG RESOURCES, INC.
GARDEN CREEK #16-23H
SECTION 23, T11N, R62W, 6th P.M.

PROCEED IN A WESTERLY DIRECTION FROM HEREFORD, COLORADO ON COUNTY ROAD 136 APPROXIMATELY 1.5 MILES TO THE JUNCTION OF COUNTY ROAD 136 AND COUNTY ROAD 77 TO THE SOUTH; TURN LEFT AND PROCEED IN A SOUTHERLY DIRECTION APPROXIMATELY 5.0 MILES TO THE JUNCTION COUNTY ROAD 77 AND COUNTY ROAD 126 TO THE EAST; TURN LEFT AND PROCEED IN AN EASTERLY DIRECTION APPROXIMATELY 3.0 MILES TO THE JUNCTION OF THIS ROAD AND COUNTY ROAD 83 TO THE NORTH; TURN LEFT AND PROCEED IN A NORTHERLY DIRECTION APPROXIMATELY 0.1 MILES TO THE BEGINNING OF THE PROPOSED ACCESS ROAD TO THE WEST; FOLLOW ROAD FLAGS IN A WESTERLY DIRECTION APPROXIMATELY 280' TO THE PROPOSED LOCATION.

TOTAL DISTANCE FROM HEREFORD, COLORADO TO THE PROPOSED LOCATION IS APPROXIMATELY 9.6 MILES.



LEGEND:

PROPOSED LOCATION



EOG RESOURCES, INC.

GARDEN CREEK #16-23H
SECTION 23, T11N, R62W, 6th P.M.
501' FSL 501' FEL



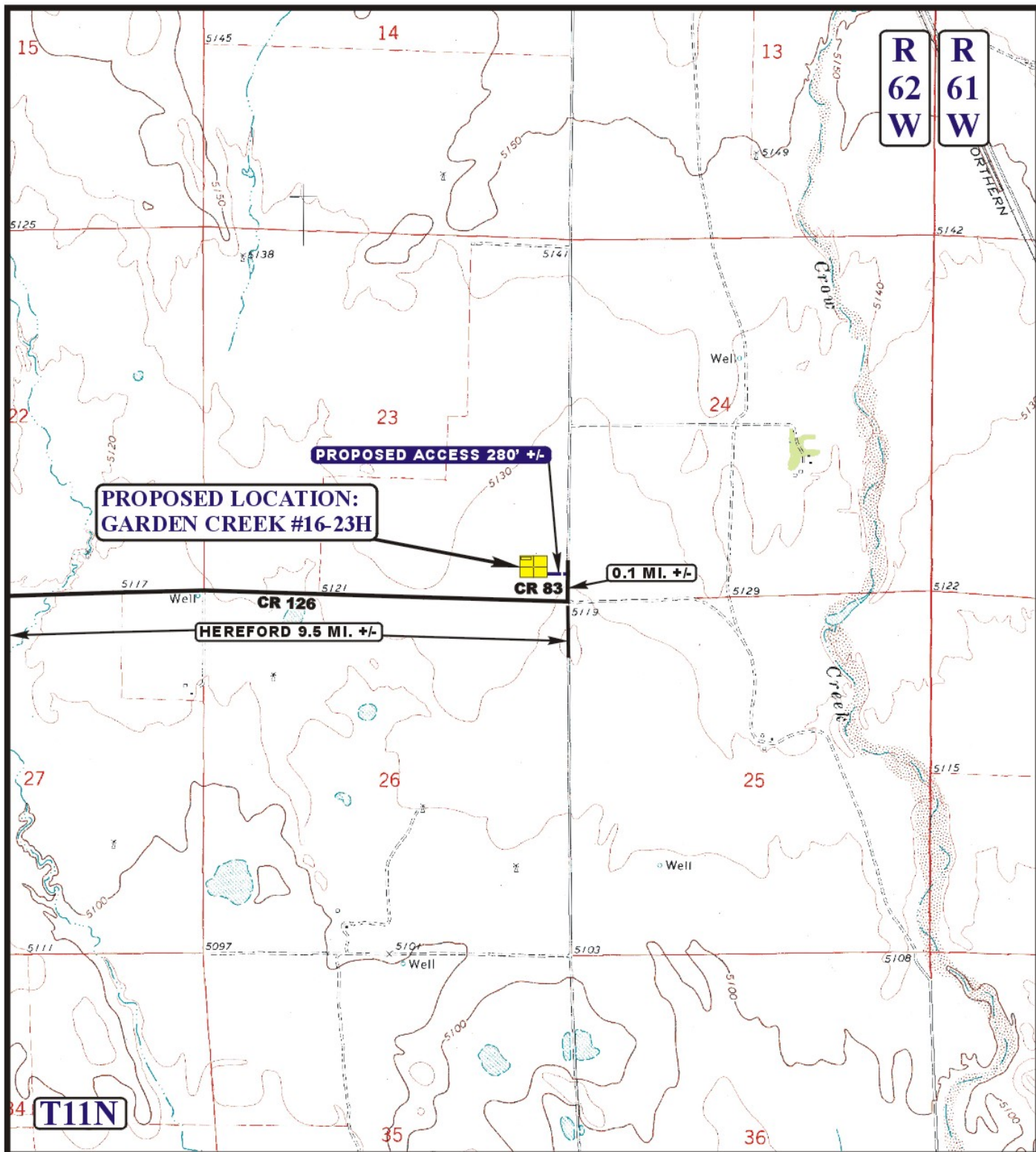
Uintah Engineering & Land Surveying
85 South 200 East Vernal, Utah 84078
(435) 789-1017 * FAX (435) 789-1813

**ACCESS ROAD
MAP**

05 12 10
MONTH DAY YEAR

SCALE: 1:100,000 DRAWN BY: Z.L. REVISED: 00-00-00





LEGEND:

----- PROPOSED ACCESS ROAD
 ————— EXISTING ROAD

EOG RESOURCES, INC.

GARDEN CREEK #16-23H
SECTION 23, T11N, R62W, 6th P.M.
501' FSL 501' FEL



Uintah Engineering & Land Surveying
 85 South 200 East Vernal, Utah 84078
 (435) 789-1017 * FAX (435) 789-1813



**ACCESS ROAD
MAP**

05 12 10
 MONTH DAY YEAR

SCALE: 1" = 2000' DRAWN BY: Z.L. REVISED: 00-00-00

**B
TOPO**