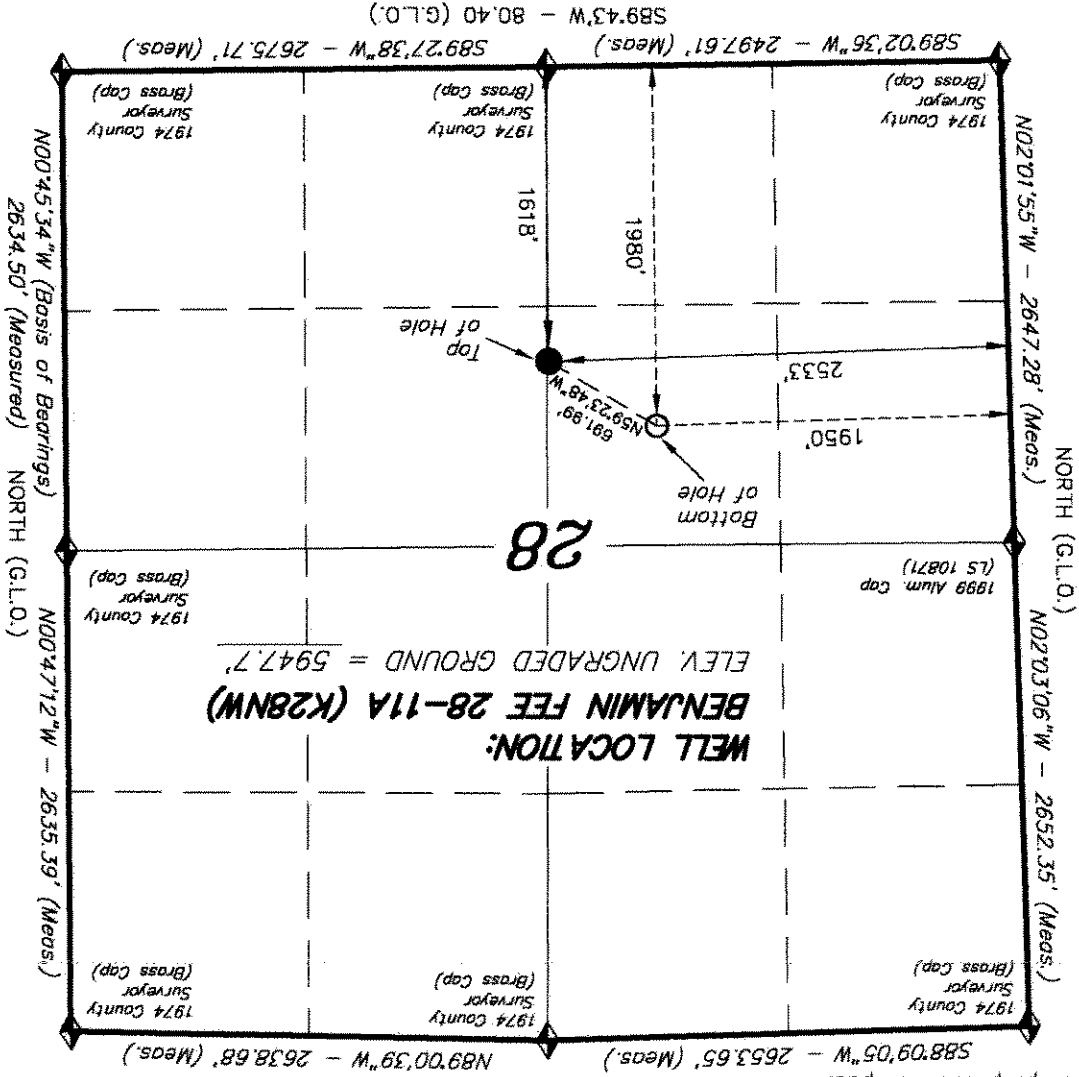


IMPROVEMENT NOTE:
See addendum to legal plat (sheet 2u) for visible improvements within 400' of the proposed well pad.
T6S, R93W, 6th P.M.



Long. (NAD 83). Elevation = 5323.1' (NAVD88).
Station. 39°31'53.80" N Lat. & 107°47'07.78" W
Basis of elevation is the Rifle 2 Triangulation

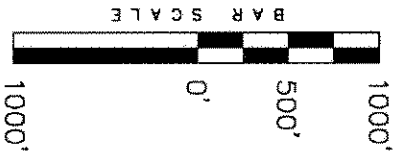
◆ = SECTION CORNERS LOCATED

NAD 83 (SURFACE LOCATION)
LATITUDE = 39°29'39.74" (39.494371)
LONGITUDE = 107°46'49.58" (107.780438)

DATE SURVEYED: 06-11-10	SURVEYED BY: C.D.S.	DATE DRAWN: 06-14-10	DRAWN BY: M.W.	REVISID: L.C.S. 10-25-10	SCALE: 1" = 1000'	OF 11
TRI STATE LAND SURVEYING & CONSULTING 180 NORTH VERNAL AVE. - VERNAL, UTAH 84078 (435) 781-2501						

THIS IS TO CERTIFY THAT THE ABOVE PLAT WAS PREPARED FROM FIELD NOTES OF A SURVEY MADE BY ME OR UNDER MY SUPERVISION. THE LOCATION HAS BEEN STAKED ON THE GROUND AS SHOWN ON THE PLAT, AND THAT THE SAME ARE TRUE AND CORRECT TO THE BEST OF MY KNOWLEDGE AND BELIEF.
REGISTERED LAND SURVEYOR
REGISTRATION No. 30125
STATE OF COLORADO
30125

NOTES:
1. Well footages are measured at right angles to the Section lines.
2. Bearings are based on Global Positioning Satellite observations.
3. G.P.S. Operator: C.D. Slaugh, (PDOP) = 2.8



ENCANA OIL & GAS (USA) INC

RECEIVED

NOV 02 2010