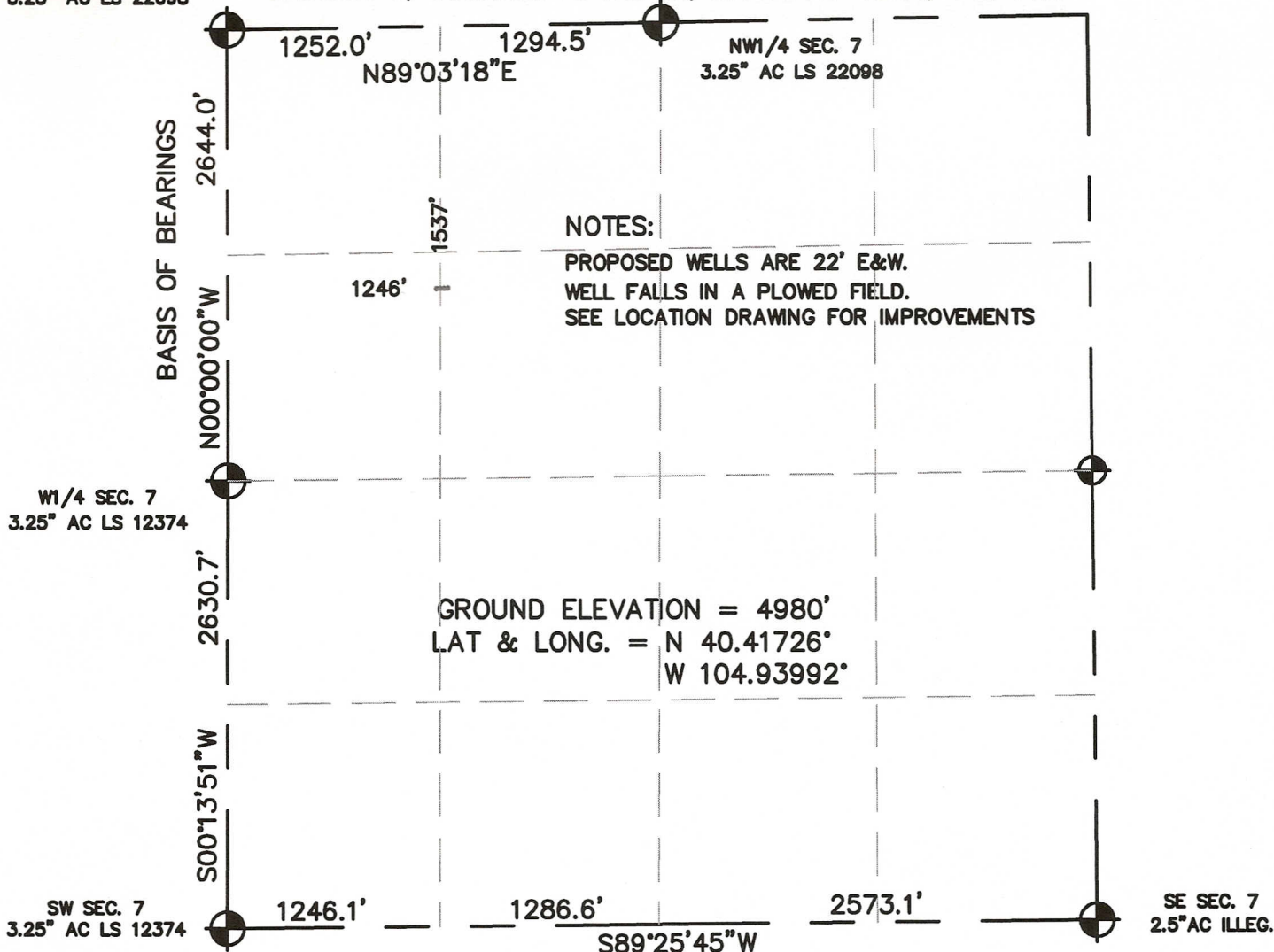


NW SEC. 7
3.25" AC LS 22098

WELL LOCATION CERTIFICATE

SECTION 7, TOWNSHIP 5 NORTH, RANGE 67 WEST, 6TH P.M.

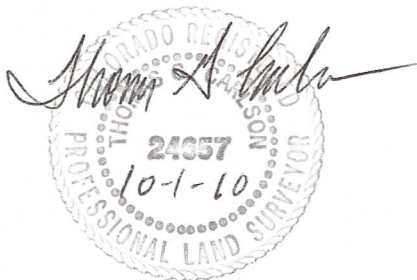


NOTES:

PROPOSED WELLS ARE 22' E&W.
WELL FALLS IN A PLOWED FIELD.
SEE LOCATION DRAWING FOR IMPROVEMENTS

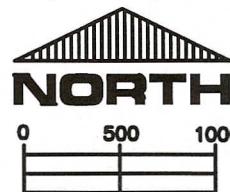
GROUND ELEVATION = 4980'
LAT & LONG. = N 40.41726°
W 104.93992°

I HEREBY STATE TO UNIOIL THAT THIS WELL LOCATION CERTIFICATE
FOR THE WELL HEINRICY 7AU IS LOCATED 1537' FNL & 1246' FWL, SEC. 7, T5N, R67W, 6PM.



LEGEND

- FOUND MONUMENT
- PROPOSED WELL
- BOTTOM HOLE



SCALE 1" = 1000'

ELEVATION SOURCE = USGS 7.5' QUAD.MAP CONTOURS
NGVD 1929 DATUM.

LAT. & LONG. ARE DIFFERENTIALLY CORRECTED (NAD'83)
USING (DGPS) WITH (PDOP) VALUES LESS THAN SIX (6).

SHOWN DISTANCES ARE FIELD MEASURED - EXTERIOR SECTION LINES
ARE DRAWN TO SCALE (BEST APPROX. OR FOUND MONUMENT).

DISTANCES TO WELL SHOWN PERPENDICULAR
TO SECTION LINES.

THOMAS G. CARLSON, PLS 24657
HORSESHOE SURVEYING, LLC

THIS IS NOT A MONUMENTED BOUNDARY SURVEY, IT IS ONLY A
DRAWING INTENDED TO DEPICT THE WELL LOCATION TO SECTION LINES.

PREPARED BY:	HORSESHOE SURVEYING, LLC PO BOX 150458 LAKEWOOD, CO 80215 (720)872-0196		WELL NAME:	HEINRICY 7AU	
DRAWING DATE:	10-1-10		LOCATION:	WELD COUNTY, CO NW1/4, SEC. 7, T5N, R67W, 6TH P.M.	
FIELD DATE:	BY:	CHKD:	JOB NO.	SHEET NO.	
9-30-10	TGC			1 OF 1	