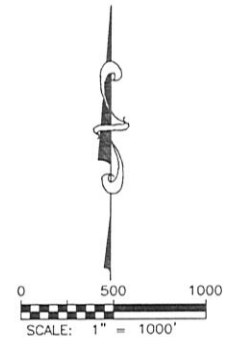
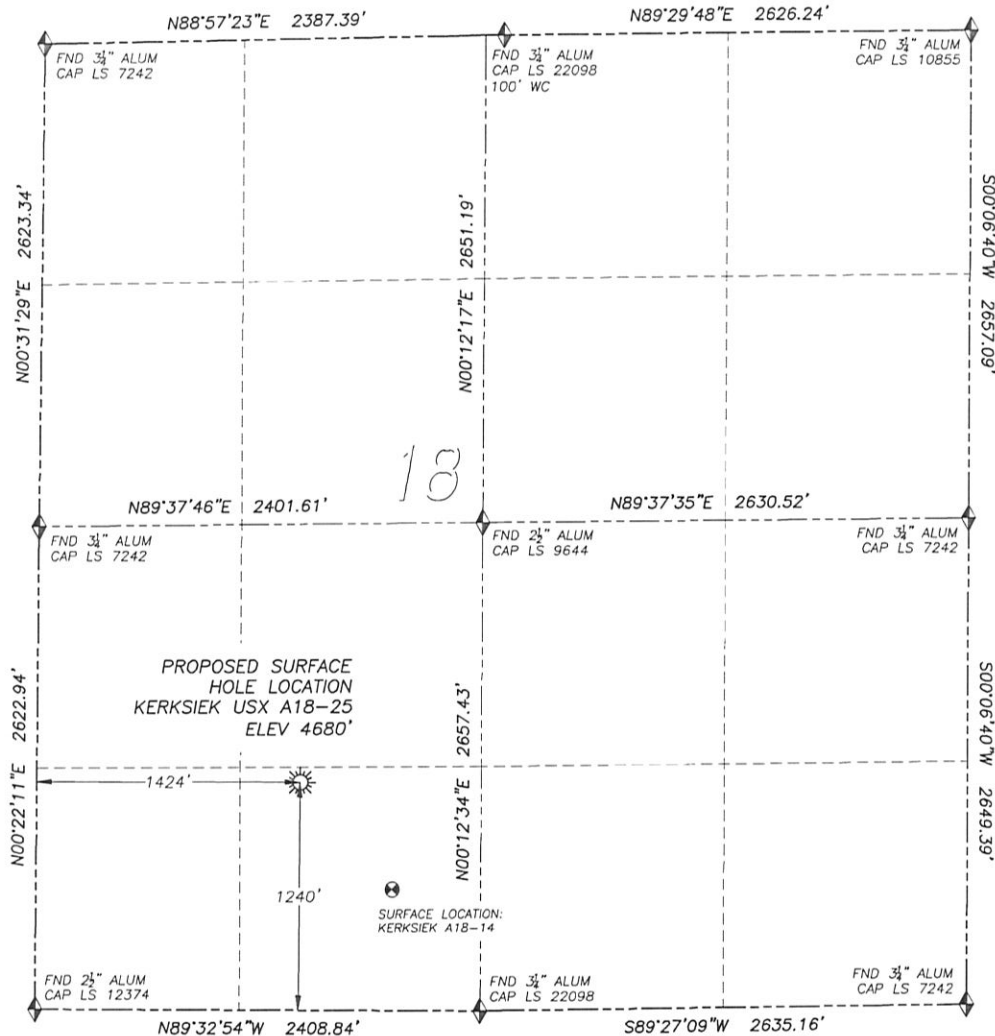


WELL LOCATION CERTIFICATE

KERKSIEK USX A18-25

SECTION 18, TOWNSHIP 6 NORTH, RANGE 64 WEST OF THE 6TH PRINCIPAL MERIDIAN

**LEGEND**

- FOUND MONUMENT AS DESCRIBED
- PROPOSED WELL
- EXISTING WELL
- BOTTOM HOLE
- ABANDONED WELL

NAD 83 LATITUDE AND LONGITUDE**KERKSIEK USX A18-25****SURFACE HOLE:**

LATITUDE: N40.48208°
 LONGITUDE: W104.59672°
 ELEVATION: 4680'
 FOOTAGE: 1240' FSL, 1424' FWL
 PDOP: 1.4
 QTR/QTR: SE4/SW4
 PROP LINE: 432'± WEST

NEAREST EXISTING WELL:

KERKSIEK A18-14 SURFACE HOLE
 LATITUDE: N40.48048°
 LONGITUDE: W104.59493°
 ELEVATION: 4678'
 768' SOUTHEAST

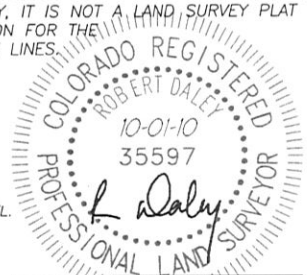
IN ACCORDANCE WITH A REQUEST FROM MIKE RODINE OF NOBLE ENERGY INC., DALEY LAND SURVEYING, INC. HAS DETERMINED THE SURFACE LOCATION OF THE KERKSIEK USX A18-25 WELL TO BE 1240' FSL, 1424' FWL, AS MEASURED AT NINETY (90) DEGREES FROM THE SECTION LINES OF SECTION 18, TOWNSHIP 6 NORTH, RANGE 64 WEST OF THE 6TH PRINCIPAL MERIDIAN, WELD COUNTY, COLORADO.

I HEREBY CERTIFY THAT THIS WELL LOCATION CERTIFICATE WAS PREPARED BY ME OR UNDER MY DIRECT SUPERVISION, THAT THE WORK WAS COMPLETED ON 9/29/2010 FOR AND ON BEHALF OF NOBLE ENERGY, INC., AND THAT THIS MAP DOES NOT REPRESENT A BOUNDARY SURVEY, IT IS NOT A LAND SURVEY PLAT OR AN IMPROVEMENT SURVEY PLAT AND IT IS NOT TO BE RELIED UPON FOR THE ESTABLISHMENT OF FENCE, BUILDING OR OTHER FUTURE IMPROVEMENT LINES.

NOTES:

- 1) BEARINGS FOR THIS MAP ARE ASSUMED AND BASED UPON GPS OBSERVATIONS MADE BETWEEN MONUMENTS LOCATED AT THE SOUTHWEST CORNER AND SOUTH QUARTER CORNER OF SECTION 18, T.6N., R.64W.
- 2) HORIZONTAL DATUM IS NAD83.
- 3) VERTICAL DATUM IS NAVD88. ELEVATIONS ARE DERIVED FROM GPS OBSERVATIONS PROCESSED THROUGH OPUS, UTILIZING THE GEOID03 MODEL.
- 4) SEE LOCATION DRAWING FOR VISIBLE IMPROVEMENTS WITHIN 600' OF PROPOSED SURFACE HOLE LOCATION.
- 5) SURFACE USE: PASTURE.

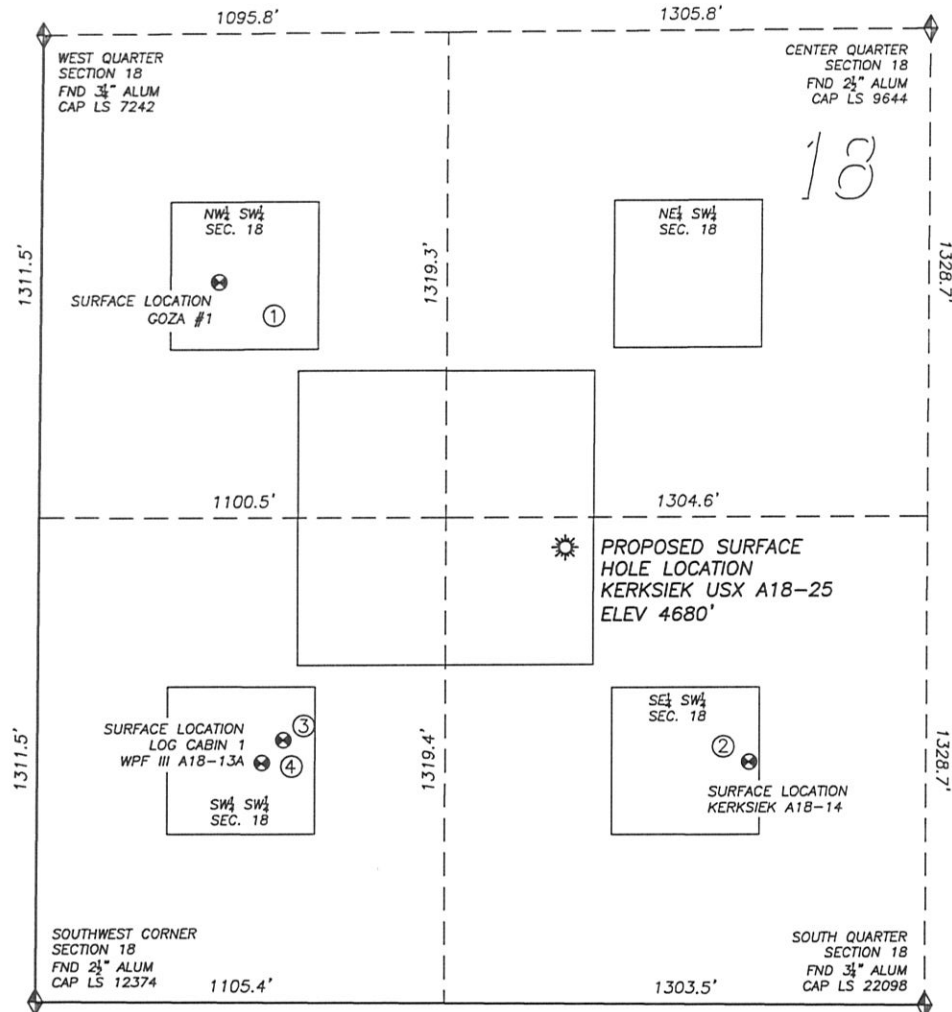
NOTICE: According to Colorado law you MUST commence any legal action based upon any defect in this W.L.C. within three years after you first discover such defect. In no event may any action based upon any such defect in this W.L.C. be commenced more than ten years from the date of the certification shown herein.



FOR AND ON BEHALF OF
 DALEY LAND SURVEYING, INC.,
 Robert Daley, PLS 35597

SITE SKETCH KERKSIEK USX A18-25

SECTION 18, TOWNSHIP 6 NORTH, RANGE 64 WEST OF THE 6TH PRINCIPAL MERIDIAN



①

GOZA #1

NW/SW SEC. 18
1954' FSL, 480' FWL
1184' NW OF PROPOSED
SURFACE HOLE LOCATION
LAT. N40.48406°
LONG. W104.60009°
EL: 4683'
PDOP 2.1

②

KERKSIEK A18-14

SE/SW SEC. 18
660' FSL, 1926' FWL
768' SE OF PROPOSED
SURFACE HOLE LOCATION
LAT. N40.48048°
LONG. W104.59493°
EL: 4678'
PDOP 1.6

③

LOG CABIN 1

SW/SW SEC. 18
713' FSL, 665' FWL
923' SW OF PROPOSED
SURFACE HOLE LOCATION
LAT. N40.48065°
LONG. W104.59946°
EL: 4684'
PDOP 2.1

④

WPF III A18-13A

SW/SW SEC. 18
651' FSL, 607' FWL
1007' SW OF PROPOSED
SURFACE HOLE LOCATION
LAT. N40.48048°
LONG. W104.59967°
EL: 4683'
PDOP 2.1

NOTES:

- 1) THIS DOES NOT REPRESENT A BOUNDARY SURVEY
- 2) THE LATITUDES AND LONGITUDES SHOWN ARE REFERENCED TO NAD83
- 3) DATUM FOR ELEVATION IS NAVD88. ELEVATIONS ARE DERIVED FROM GPS-RTK OBSERVATIONS PROCESSED THROUGH OPUS, UTILIZING THE GEOID03 MODEL.