

Steil Surveying Services, LLC

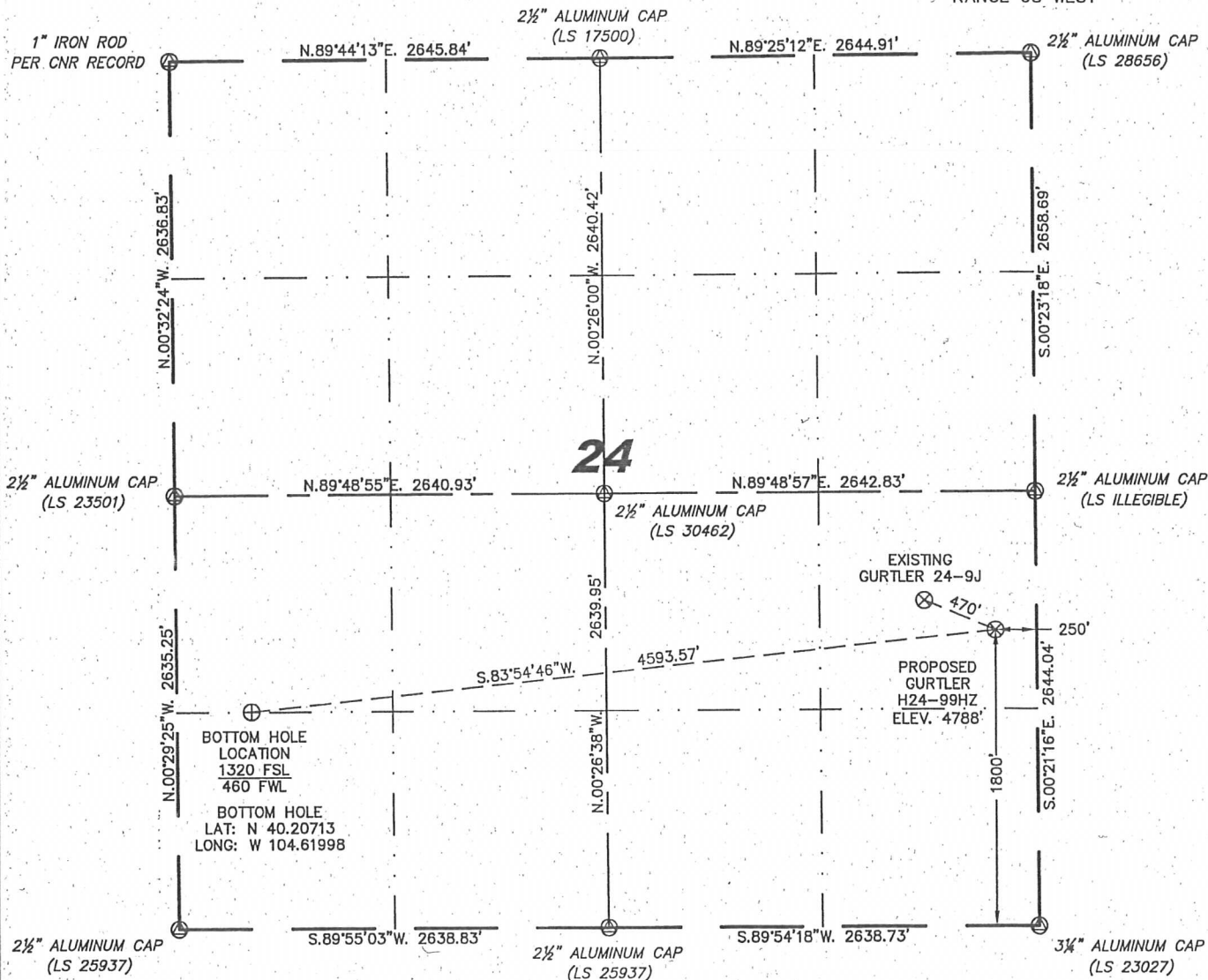
1102 West 19th Street P.O. BOX 2073

Cheyenne, Wyoming 82009

# WELL LOCATION CERTIFICATE

THIS MAP DOES NOT REPRESENT A BOUNDARY SURVEY

SECTION 24  
TOWNSHIP 3 NORTH  
RANGE 65 WEST



0 1000  
Scale: 1" = 1000'

IN ACCORDANCE WITH A REQUEST FROM ERIK VAN DECAR - NOBLE ENERGY INC, STEIL SURVEYING SERVICES, LLC HAS DETERMINED THE LOCATION OF THE GURTLE H24-99HZ WELL TO BE 1800' FSL, 250' FEL, AS MEASURED AT NINETY (90) DEGREES FROM THE SECTION LINES, SECTION 24, TOWNSHIP 3 NORTH, RANGE 65 WEST, 6TH PRINCIPLE MERIDIAN, WELD COUNTY, COLORADO.

I HEREBY CERTIFY THAT THIS WELL LOCATION CERTIFICATE WAS PREPARED BY ME, OR UNDER MY DIRECT SUPERVISION, THAT THE FIELD WORK WAS COMPLETED ON 08/11/2010, FOR AND ON BEHALF OF NOBLE ENERGY INC, THAT IT IS NOT A LAND SURVEY PLAT OR AN IMPROVEMENT SURVEY PLAT, AND THAT IT IS NOT TO BE RELIED UPON FOR ESTABLISHMENT OF FENCE, BUILDING, OR OTHER FUTURE IMPROVEMENT LINES.

## NOTES:

- 1) BASIS OF BEARINGS FOR THIS MAP ARE BASED UPON GPS OBSERVATIONS MADE ON 03/18/2008 BETWEEN MONUMENTS LOCATED AT THE SOUTHEAST SECTION CORNER AND THE NORTHEAST SECTION CORNER OF SAID SECTION AND WITH ALL BEARINGS SHOWN HEREON RELATIVE THERETO.
- 2) ELEVATIONS ARE BASED UPON NGS OPUS SOLUTION NAVD 88 DATUM.
- 3) THE NEAREST EXISTING WELL IS: CURTLER 24-9J, 470' NORTHWEST.
- 4) SEE VISIBLE IMPROVEMENTS EXHIBIT FOR ALL IMPROVEMENTS WITHIN 600'.
- 5) THE LOCATION FALLS IN PASTURE LAND.

LATITUDE & LONGITUDE (NAD 83 SURFACE HOLE):

LATITUDE: N 40.20834°  
LONGITUDE: W 104.60361°  
PDOP: 2.8

QUARTER-QUARTER: NE/4SE/4  
NEAREST PROPERTY LINE: 250' TO THE EAST

## LEGEND

- (A) FOUND SURVEY MONUMENT PER MONUMENT RECORD - EXCEPTIONS NOTED.
- (C) CALCULATED DIMENSION



Completed 08/12/2010

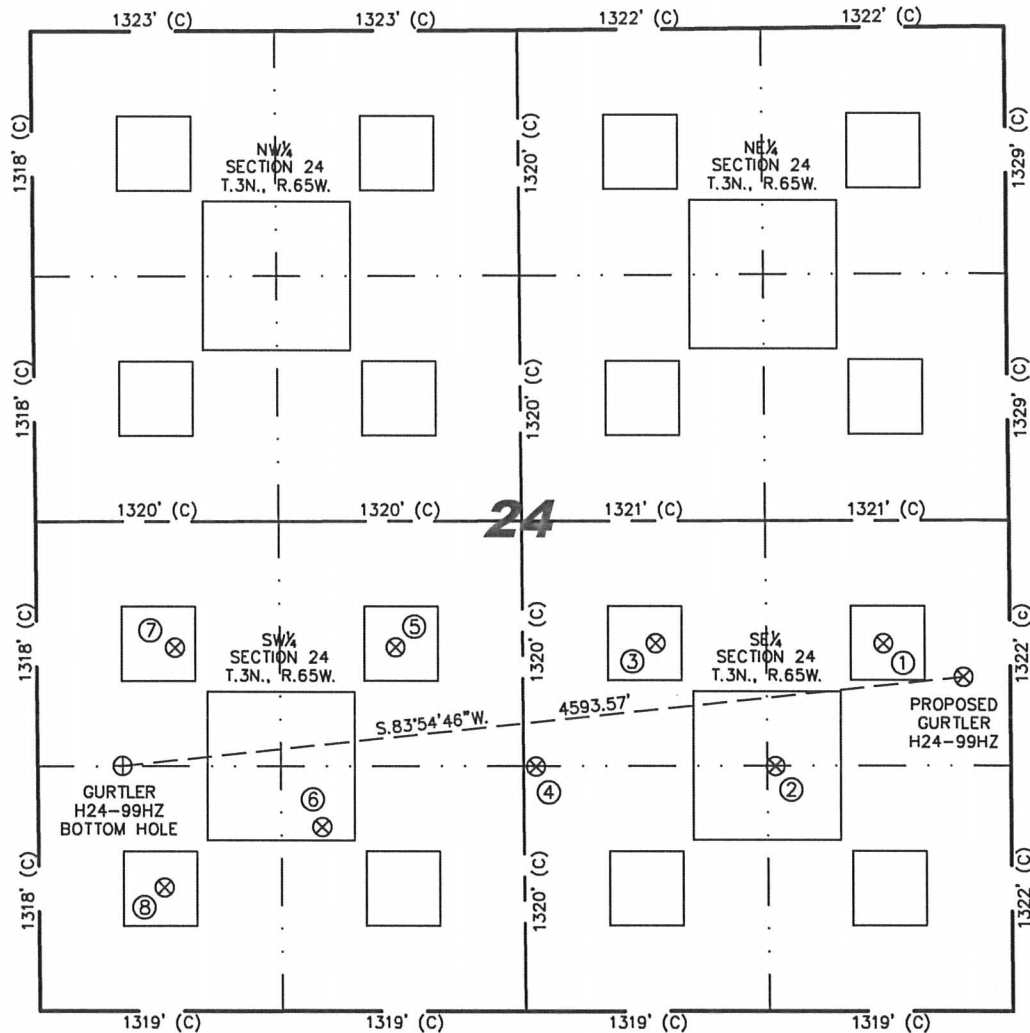
David C. Holmes  
Professional Land Surveyor Registration No. 32828  
State of Colorado

JOB #: 10086

NOTICE: According to Colorado law you MUST commence any legal action based upon any defect in this W.L.C. within three years after you first discover such defect. In no event may any action based upon any defect in this W.L.C. be commenced more than ten years from this sold date of the certification shown hereon.

# SITE SKETCH - GURTLE H24-99HZ

SECTION 24  
TOWNSHIP 3 NORTH  
RANGE 65 WEST



①	②	③	④	⑤	⑥	⑦
GURTLE 24-9J NE/SE SEC. 24 1981' FSL 683' FEL EL 4792' N 40.20885 W 104.60516 PDOP 2.2	GURTLE H24-23 SE/SE SEC. 24 1320' FSL 1275' FEL EL 4800' N 40.20704 W 104.60728 PDOP 2.2	GURTLE 24-10J NW/SE SEC. 24 1982' FSL 1922' FEL EL 4816' N 40.20888 W 104.60959 PDOP 2.1	GURTLE H24-24 SW/SE SEC. 24 1317' FSL 2575' FEL EL 4820' N 40.20707 W 104.61194 PDOP 2.1	GURTLE 24-11J NE/SW SEC. 24 1959' FSL 1950' FWL EL 4835' N 40.20885 W 104.61464 PDOP 2.8	GURTLE RUSSELL L. NO. 1 SE/SW SEC. 24 991' FSL 1543' FWL EL 4845' N 40.20620 W 104.61610 PDOP 2.0	GURTLE 24-12J NW/SW SEC. 24 1957' FSL 751' FWL EL 4848' N 40.20887 W 104.61893 PDOP 2.7

⑧  
GURTLE  
24-13J  
SW/SW SEC. 24  
665' FSL  
682' FWL  
EL 4853'  
N 40.20532  
W 104.61919  
PDOP 2.0

## NOTES:

- THIS SKETCH DOES NOT REPRESENT A BOUNDARY SURVEY.
- THE DATUM FOR THE LATITUDES AND LONGITUDES ON THIS SKETCH IS NAD83.

