

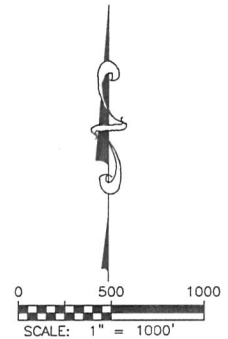
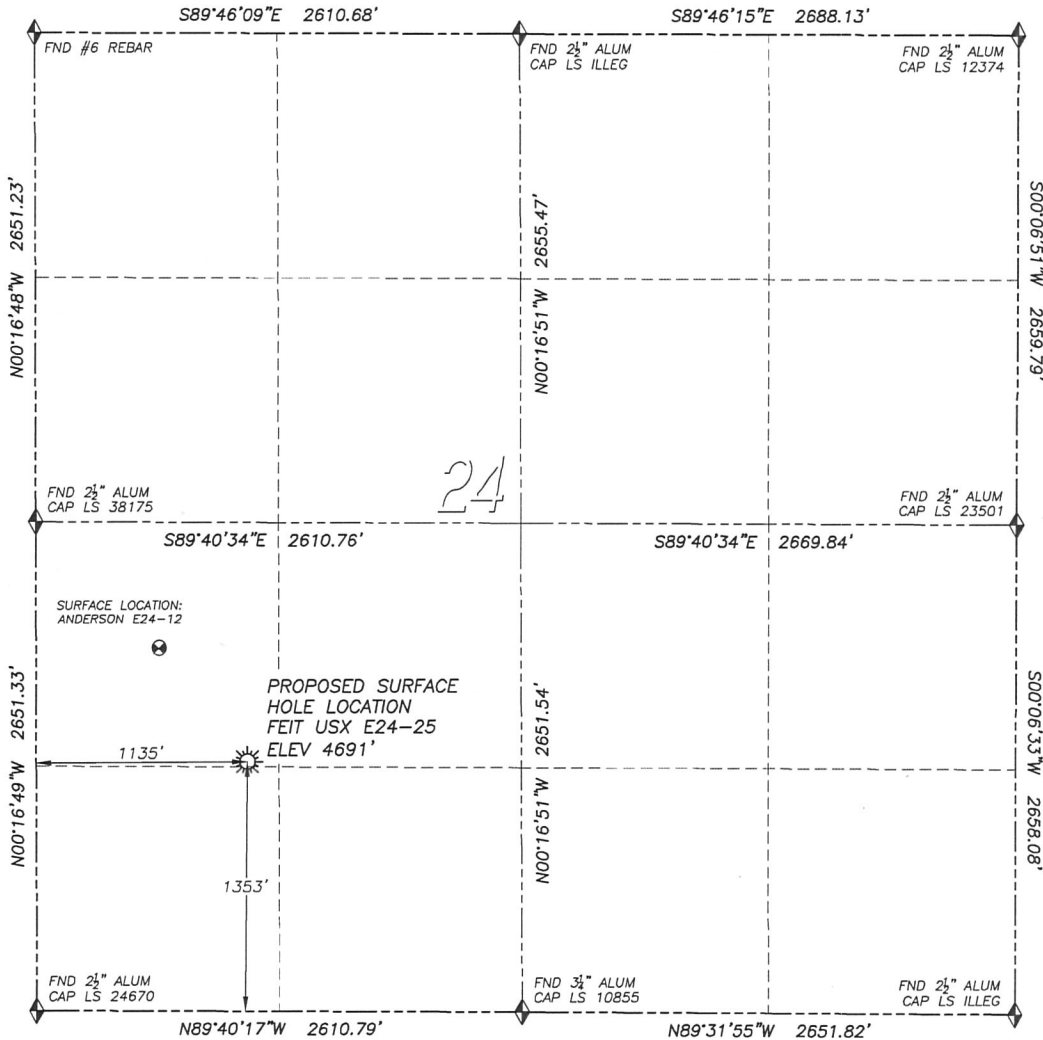
DALEY LAND SURVEYING, INC.

PARKER, CO. 80134

303 953 9841

# WELL LOCATION CERTIFICATE FEIT USX E24-25

SECTION 24, TOWNSHIP 6 NORTH, RANGE 65 WEST OF THE 6TH PRINCIPAL MERIDIAN



## LEGEND

- ◆ FOUND MONUMENT AS DESCRIBED
- ☀ PROPOSED WELL
- EXISTING WELL
- BOTTOM HOLE
- ⊗ ABANDONED WELL

## NAD 83 LATITUDE AND LONGITUDE

### FEIT USX E24-25 SURFACE HOLE:

LATITUDE: N40.46791°  
 LONGITUDE: W104.61675°  
 ELEVATION: 4691'  
 FOOTAGE: 1353' FSL, 1135' FWL  
 PDOP: 1.3  
 QTR/QTR: NW4/SW4  
 PROP LINE: 170° EAST

IN ACCORDANCE WITH A REQUEST FROM BRIAN DeROSE OF NOBLE ENERGY INC., DALEY LAND SURVEYING, INC. HAS DETERMINED THE SURFACE LOCATION OF THE FEIT USX E24-25 WELL TO BE 1353' FSL, 1135' FWL, AS MEASURED AT NINETY (90) DEGREES FROM THE SECTION LINES OF SECTION 24, TOWNSHIP 6 NORTH, RANGE 65 WEST OF THE 6TH PRINCIPAL MERIDIAN, WELD COUNTY, COLORADO.

I HEREBY CERTIFY THAT THIS WELL LOCATION CERTIFICATE WAS PREPARED BY ME OR UNDER MY DIRECT SUPERVISION, THAT THE WORK WAS COMPLETED ON 10/04/2010 FOR AND ON BEHALF OF NOBLE ENERGY, INC., AND THAT THIS MAP DOES NOT REPRESENT A BOUNDARY SURVEY, IT IS NOT A LAND SURVEY PLAT OR AN IMPROVEMENT SURVEY PLAT AND IT IS NOT TO BE RELIED UPON FOR THE ESTABLISHMENT OF FENCE, BUILDING OR OTHER FUTURE IMPROVEMENT LINES.

## NOTES:

- 1) BEARINGS FOR THIS MAP ARE ASSUMED AND BASED UPON GPS OBSERVATIONS MADE BETWEEN MONUMENTS LOCATED AT THE SOUTHWEST CORNER AND WEST QUARTER CORNER OF SECTION 24, T.6N., R.65W.
- 2) HORIZONTAL DATUM IS NAD83.
- 3) VERTICAL DATUM IS NAVD88. ELEVATIONS ARE DERIVED FROM GPS OBSERVATIONS PROCESSED THROUGH OPUS, UTILIZING THE GEOID03 MODEL.
- 4) SEE LOCATION DRAWING FOR VISIBLE IMPROVEMENTS WITHIN 600' OF PROPOSED SURFACE HOLE LOCATION.
- 5) SURFACE USE: AGRICULTURAL.

## NEAREST EXISTING WELL:

ANDERSON E24-12 SURFACE HOLE  
 LATITUDE: N40.46960°  
 LONGITUDE: W104.61847°  
 ELEVATION: 4693'  
 778' NORTHWEST

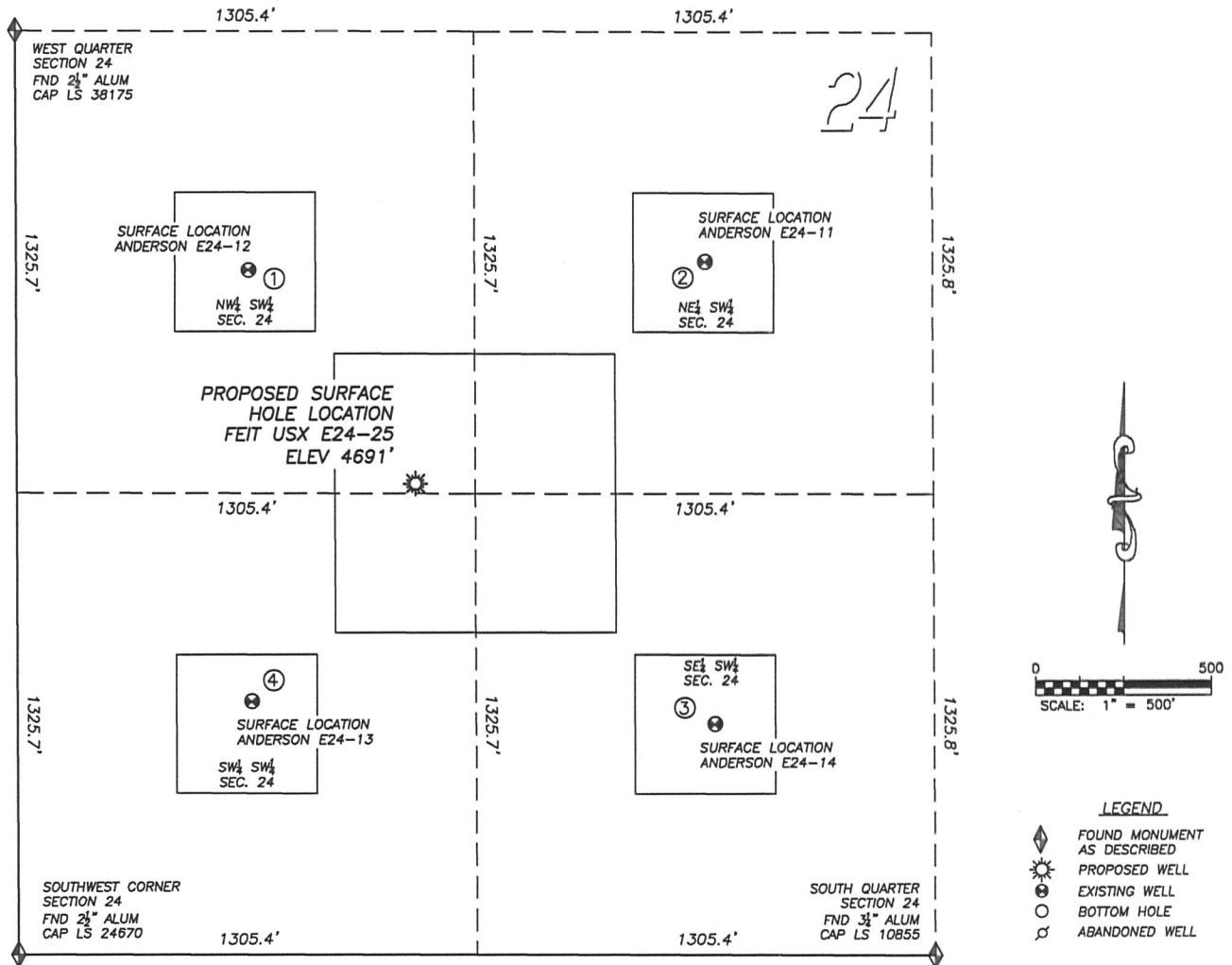
NOTICE: According to Colorado law you MUST commence any legal action based upon any defect in this W.L.C. within three years after you first discover such defect. In no event may any action based upon any such defect in this W.L.C. be commenced more than ten years from the date of the certification shown herein.



FOR AND ON BEHALF OF  
 DALEY LAND SURVEYING INC.,  
 Robert Daley, PLS 35597

## SITE SKETCH FEIT USX E24-25

SECTION 24, TOWNSHIP 6 NORTH, RANGE 65 WEST OF THE 6TH PRINCIPAL MERIDIAN



①

**ANDERSON E24-12**  
 NW/SW SEC. 24  
 1965' FSL, 660' FWL  
 778' NW OF PROPOSED  
 SURFACE HOLE LOCATION  
 LAT. N40.46960°  
 LONG. W104.61847°  
 EL: 4693'  
 PDOP 1.3

②

**ANDERSON E24-11**  
 NE/SW SEC. 24  
 1991' FSL, 1962' FWL  
 1039' NE OF PROPOSED  
 SURFACE HOLE LOCATION  
 LAT. N40.46965°  
 LONG. W104.61379°  
 EL: 4685'  
 PDOP 2.0

③

**ANDERSON E24-14**  
 SE/SW SEC. 24  
 663' FSL, 1986' FWL  
 1101' SE OF PROPOSED  
 SURFACE HOLE LOCATION  
 LAT. N40.46600°  
 LONG. W104.61368°  
 EL: 4688'  
 PDOP 2.2

④

**ANDERSON E24-13**  
 SW/SW SEC. 24  
 727' FSL, 667' FWL  
 778' SW OF PROPOSED  
 SURFACE HOLE LOCATION  
 LAT. N40.46620°  
 LONG. W104.61842°  
 EL: 4692'  
 PDOP 1.3

## NOTES:

- 1) THIS DOES NOT REPRESENT A BOUNDARY SURVEY
- 2) THE LATITUDES AND LONGITUDES SHOWN ARE REFERENCED TO NAD83
- 3) DATUM FOR ELEVATION IS NAVD88. ELEVATIONS ARE DERIVED FROM GPS-RTK OBSERVATIONS PROCESSED THROUGH OPUS, UTILIZING THE GEOID03 MODEL.