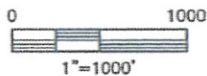
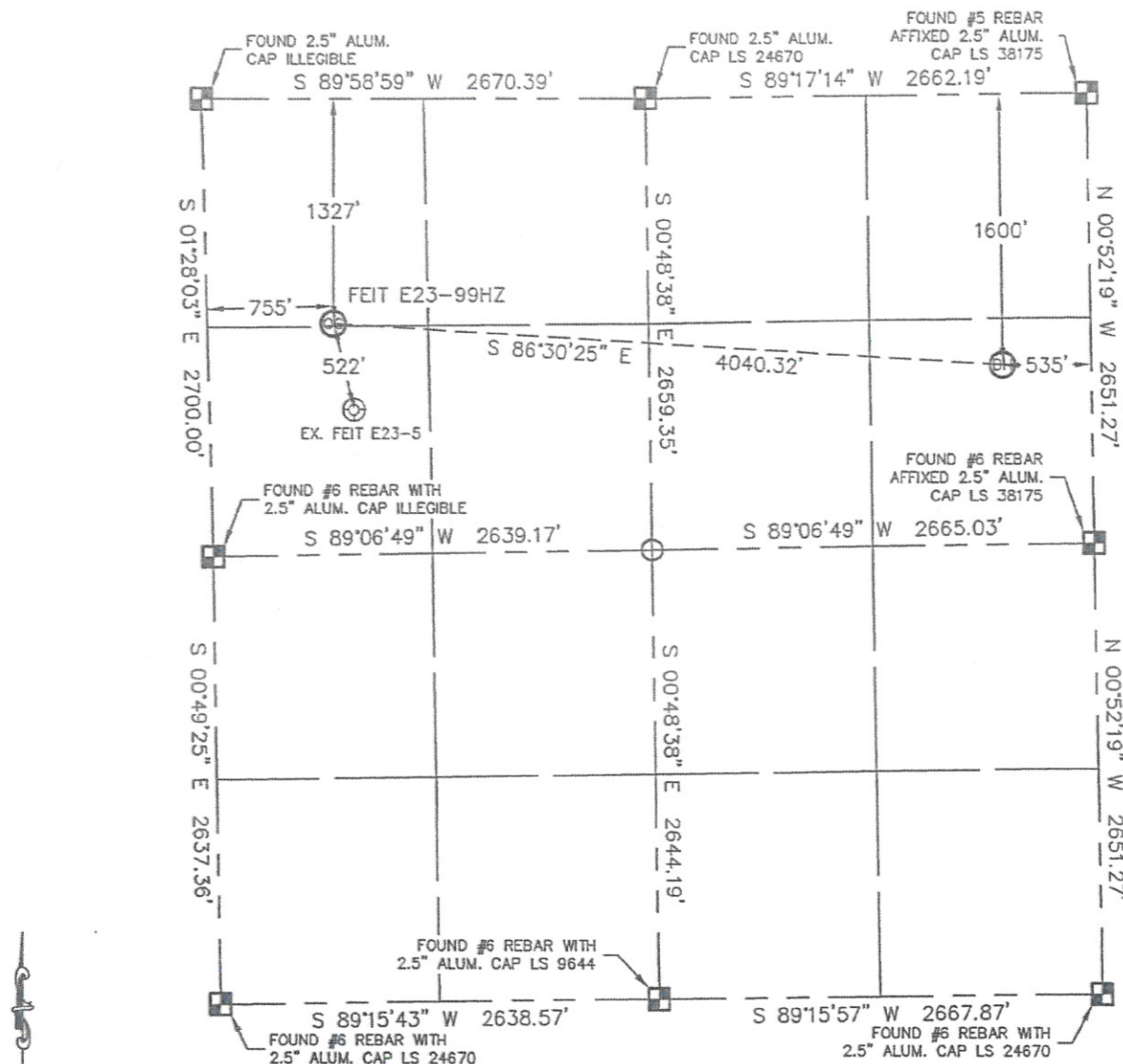


Lat40°, LLC 1635 Foxtrail Drive, Suite 325 Loveland, CO 80538

WELL LOCATION CERTIFICATE

THIS MAP DOES NOT REPRESENT A BOUNDARY SURVEY

SECTION: 23
TOWNSHIP: 6N
RANGE: 65W



In accordance with a request from BRIAN DEROSE with Noble Energy Inc., Lat40°, LLC has determined the surface location of the FEIT E23-99HZ to be 1327' from the NORTH line and 755' from the WEST line and the bottom hole to be 1600' from the NORTH line and 535' from the EAST line as measured at right angles from the section line of Section 23, Township 6 North, Range 65 West of the Sixth Principal Meridian, County of Weld, State of Colorado.

I hereby state that this Well Location Certificate was prepared by me, or under my direct supervision, that the fieldwork was completed on 8-25-10, for and on behalf of Noble Energy Inc.. That this is not a Land Survey Plat or an Improvement Survey Plat, and that it is not to be relied upon for establishment of fence, building, or other future improvement lines.



NOTE:

- 1) Bearings shown are Grid Bearings of the Colorado State Plane Coordinate System, North Zone, North American Datum 1983/2007. The lineal dimensions as contained herein are based upon the "U.S. Survey Foot."
- 2) Ground elevations are based on an observed GPS elevation (NAVD 1988 DATUM).
- 3) NEAREST EXISTING WELL: FEIT E23-5 522'
- 4) IMPROVEMENTS: See LOCATION DRAWING for all visible improvements within 400' of disturbed area.
- 5) SURFACE USE: CROP IRRIGATED
- 6) INSTRUMENT OPERATOR: BRIAN BRINKMAN

NOTE

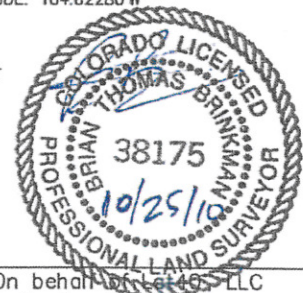
According to Colorado law, you must commence any legal action based upon any defect in this W.L.C. within three years after you discover such defect. In no event, may any action based upon any defect in this survey be commenced more than ten years after the date of the certificate shown hereon. (13-80-105 C.R.S.)

LEGEND

-  = ALIQUOT MONUMENT AS DESCRIBED
-  = CALCULATED POSITION

SURFACE LOCATION
LATITUDE: 40.47515N
LONGITUDE: 104.63728W
PDOP: 2.2
ELEV: 4732
1/4, 1/4: NW1/4 NW1/4

BOTTOM HOLE
LATITUDE: 40.47437N
LONGITUDE: 104.62280W
NEAREST PROPERTY LINE: 755' WEST

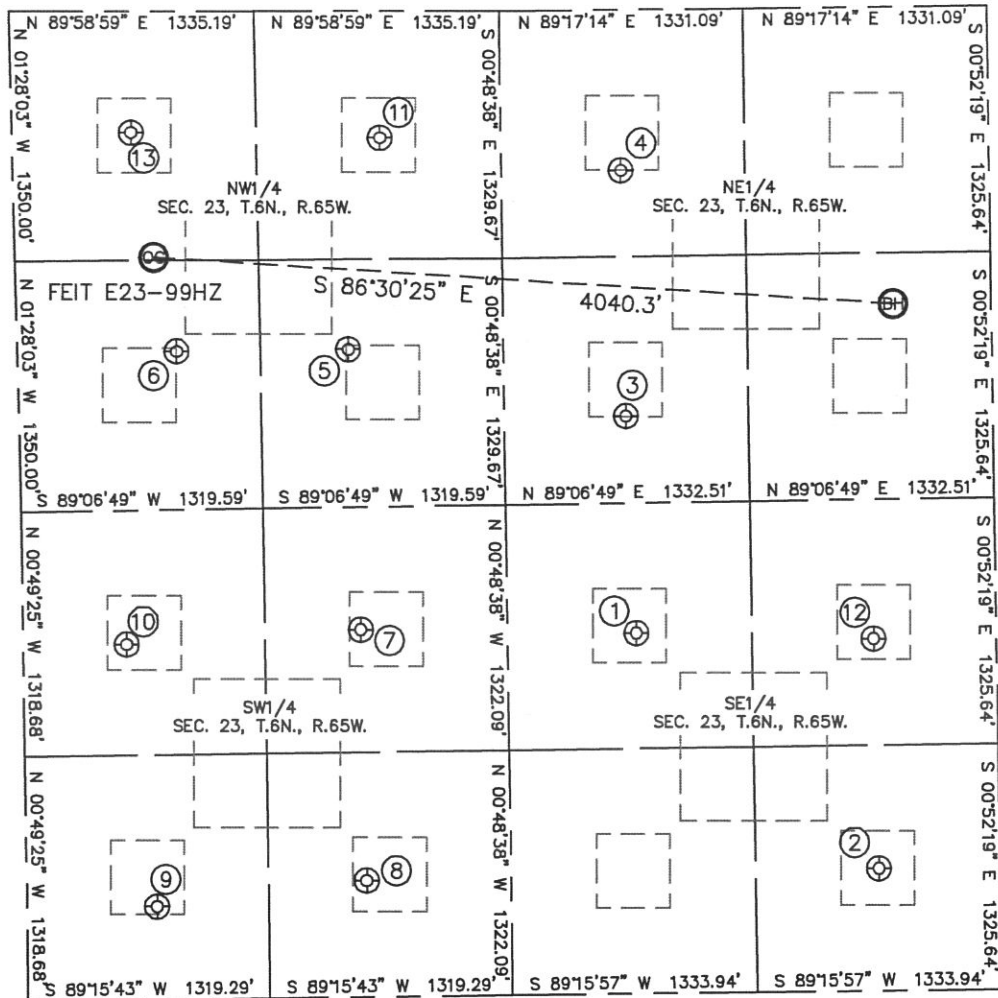


Brian T. Brinkman—On behalf of Lat40°, LLC
Colorado Licensed Professional
Land Surveyor No. 38175 PROJECT#: 2010086

SITE SKETCH

FEIT E23-99HZ

SECTION: 23
TOWNSHIP: 6N
RANGE: 65W



①

FEIT E23-10
NW1/4SE1/4
1946' FSL
1962' FEL
LAT-40.46954°N
LONG-104.62789°W
PDOP: 2.2
ELEV: 4699

②

FEIT E23-16
SE1/4SE1/4
660' FSL
661' FEL
LAT-40.46602°N
LONG-104.62319°W
PDOP: 1.5
ELEV: 4696

③

DINNER E23-7
SW1/4NE1/4
2188' FNL
2001' FEL
LAT-40.47275°N
LONG-104.62805°W
PDOP: 2.0
ELEV: 4701

④

DINNER E23-2
NW1/4NE1/4
865' FNL
2011' FEL
LAT-40.47638°N
LONG-104.62811°W
PDOP: 2.1
ELEV: 4703

⑤

FEIT E23-6
SE1/4NW1/4
1822' FNL
1803' FWL
LAT-40.47377°N
LONG-104.63349°W
PDOP: 2.0
ELEV: 4708

⑥

FEIT E23-5
SW1/4NW1/4
1833' FNL
866' FWL
LAT-40.47376°N
LONG-104.63685°W
PDOP: 1.9
ELEV: 4728

⑦

SITZMAN E23-11
NE1/4SW1/4
1982' FSL
1840' FWL
LAT-40.46962°N
LONG-104.63329°W
PDOP: 1.5
ELEV: 4715

⑧

SITZMAN 1-23 EG
SE1/4SW1/4
628' FSL
1852' FWL
LAT-40.46591°N
LONG-104.63323°W
PDOP: 2.4
ELEV: 4711

⑨

SITZMAN E23-13
SW1/4SW1/4
502' FSL
709' FWL
LAT-40.46555°N
LONG-104.63733°W
PDOP: 1.5
ELEV: 4713

⑩

SITZMAN E23-12
NW1/4SW1/4
1917' FSL
565' FWL
LAT-40.46944°N
LONG-104.63787°W
PDOP: 1.6
ELEV: 4720

⑪

FEIT E23-3
NE1/4NW1/4
682' FNL
2001' FWL
LAT-40.47689°N
LONG-104.63284°W
PDOP: 1.6
ELEV: 4706

⑫

FEIT E23-9
NE1/4SE1/4
1899' FSL
669' FEL
LAT-40.46942°N
LONG-104.62324°W
PDOP: 2.1
ELEV: 4696

⑬

FEIT 2-23 EG
NW1/4NW1/4
655' FNL
648' FWL
LAT-40.47700°N
LONG-104.63770°W
PDOP: 2.3
ELEV: 4733

