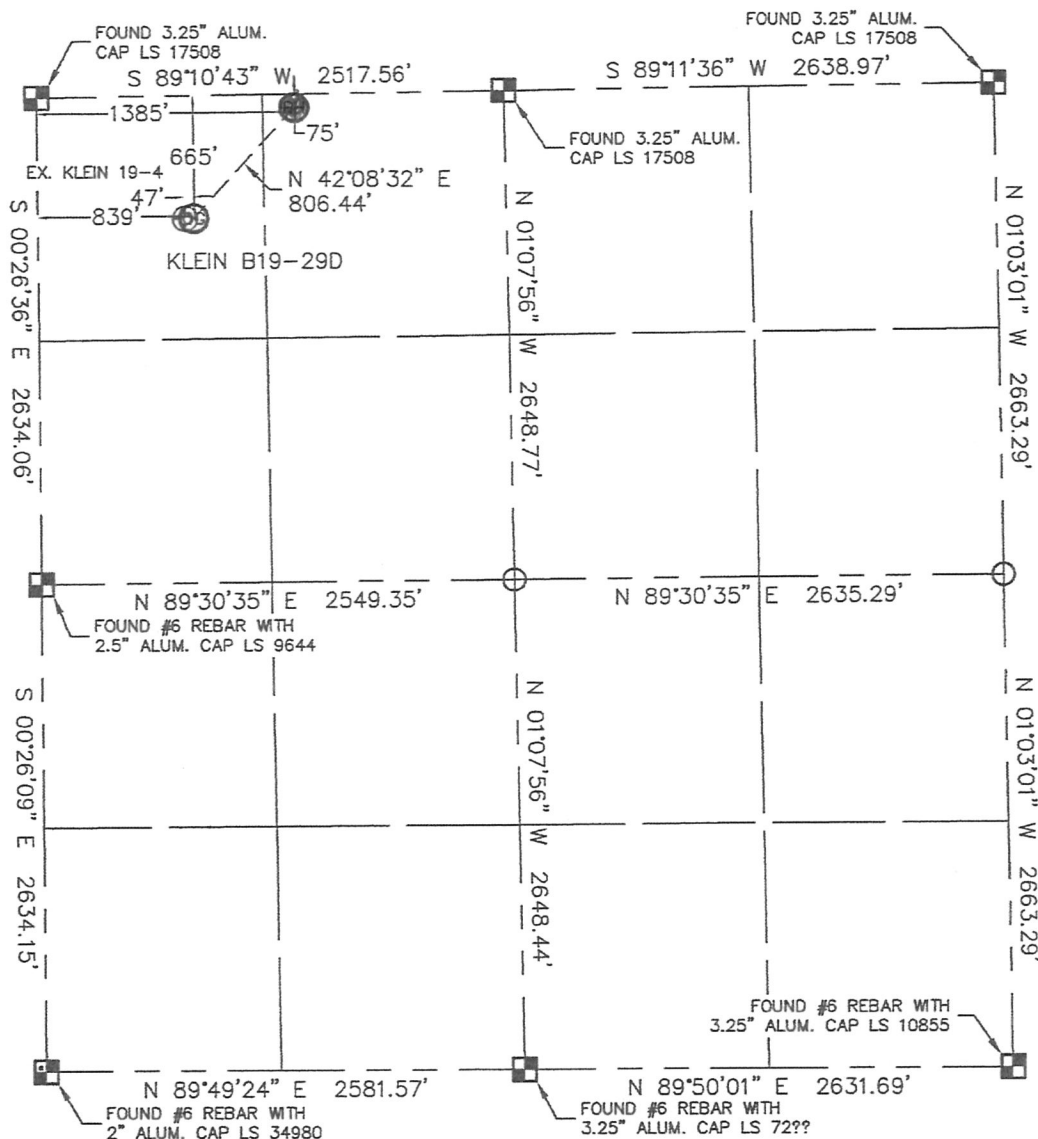


WELL LOCATION CERTIFICATE

THIS MAP DOES NOT REPRESENT A BOUNDARY SURVEY

SECTION: 19
TOWNSHIP: 5N
RANGE: 64W



In accordance with a request from Matt Campbell with Noble Energy Inc. Lat40°, LLC has determined the surface location of the KLEIN B19-29D to be 665' from the NORTH line and 839' from the WEST line and the bottom hole to be 75' from the NORTH line and 1385' from the WEST line as measured at right angles from the section line of Section 19, Township 5 North, Range 64 West of the Sixth Principal Meridian, County of Weld, State of Colorado.

I hereby state that this Well Location Certificate was prepared by me, or under my direct supervision, that the fieldwork was completed on 6/1/10, for and on behalf of Noble Energy Inc. That this is not a Land Survey Plat or an Improvement Survey Plat, and that it is not to be relied upon for establishment of fence, building, or other future improvement lines.

NOTE:

- 1) Bearings shown are Grid Bearings of the Colorado State Plane Coordinate System, North Zone, North American Datum 1983/2007. The lineal dimensions as contained herein are based upon the "U.S. Survey Foot."
- 2) Ground elevations are based on an observed GPS elevation (NAVD 1988 DATUM).
- 3) NEAREST EXISTING WELL: KLEIN 19-4 47'
- 4) IMPROVEMENTS: See VISIBLE IMPROVEMENTS exhibit for all visible improvements within 400' of disturbed area.
- 5) SURFACE USE: CROP DRYLAND, EX. WELL SITE

SURFACE LOCATION

LATITUDE: 40.39003°N
LONGITUDE: 104.59888°W
PDOP: 2.6
ELEV: 4630
1/4, 1/4: NW1/4NW1/4
NEAREST PROPERTY LINE: 13' NORTH

BOTTOM HOLE

LATITUDE: 40.39166°N
LONGITUDE: 104.59691°W

NOTE

According to Colorado law, you must commence any legal action based upon any defect in this W.L.C. within three years after you discover such defect. In no event, may any action based upon any defect in this survey be commenced more than ten years after the date of the certificate shown hereon. (13-80-105 C.R.S.)

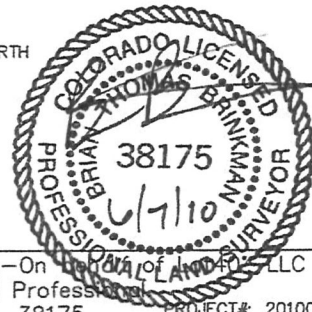
LEGEND



= ALIQUOT MONUMENT AS DESCRIBED



= CALCULATED POSITION



Brian T. Brinkman-On behalf of Lat40°, LLC
Colorado Licensed Professional
Land Surveyor No. 38175
PROJECT#: 2010026

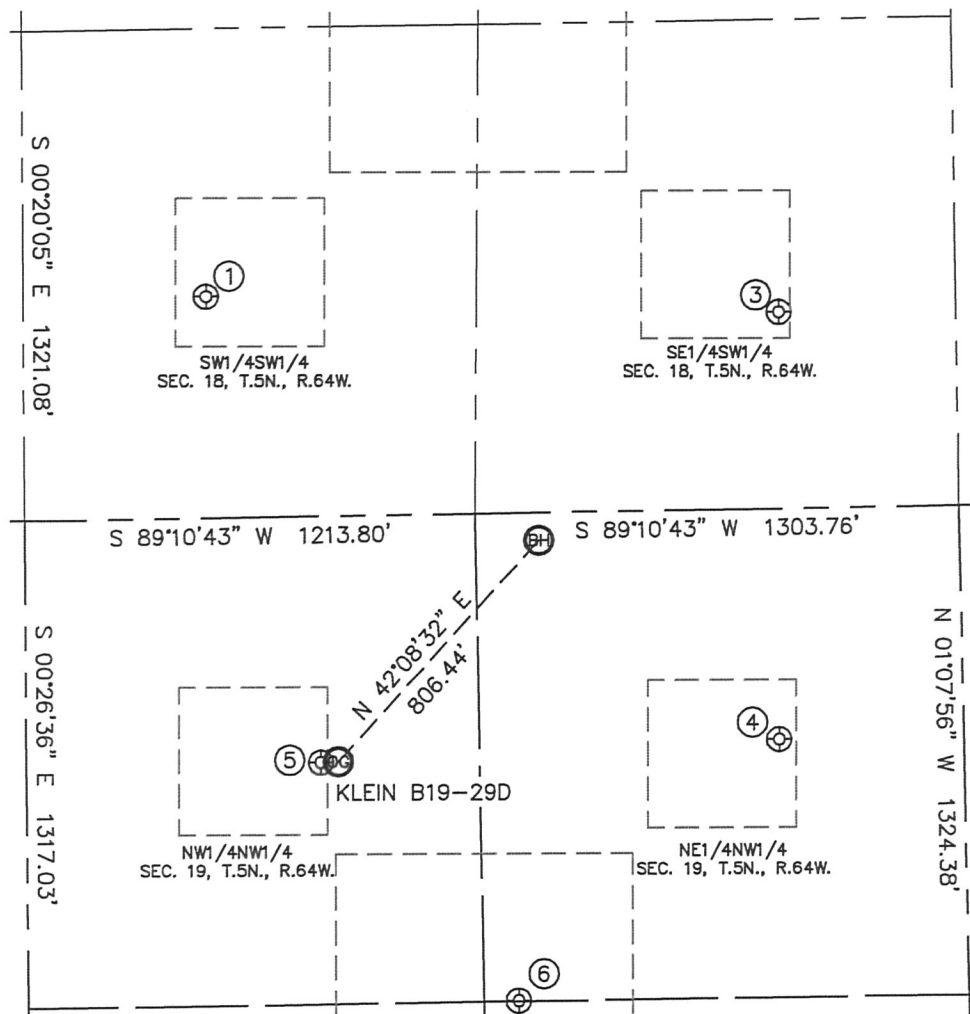
Lat40°, LLC

1635 Foxtrail Drive, Suite 325

Loveland, CO 80538

SITE SKETCH

SECTION: 19
TOWNSHIP: 5N
RANGE: 64W



①

HOWARD 14-18
SW1/4SW1/4
598' FSL
492' FWL
LAT-40.39349°N
LONG-104.60011°W
PDOP: 1.7
ELEV: 4630

③

HOWARD 24-18
SE1/4SW1/4
530' FSL
2035' FWL
LAT-40.39333°N
LONG-104.59457°W
PDOP: 1.4
ELEV: 4629

④

KLEIN 2-19-5-64
NE1/4NW1/4
625' FNL
2028' FWL
LAT-40.39016°N
LONG-104.59461°W
PDOP: 1.4
ELEV: 4629

⑤

KLEIN 19-4
NW1/4NW1/4
666' FNL
792' FWL
LAT-40.39003°N
LONG-104.59904°W
PDOP: 1.6
ELEV: 4629

⑥

KLEIN B 19-19
NE1/4NW1/4
1319' FNL
1320' FWL
LAT-40.38824°N
LONG-104.59716°W
PDOP: 2.9
ELEV: 4631

