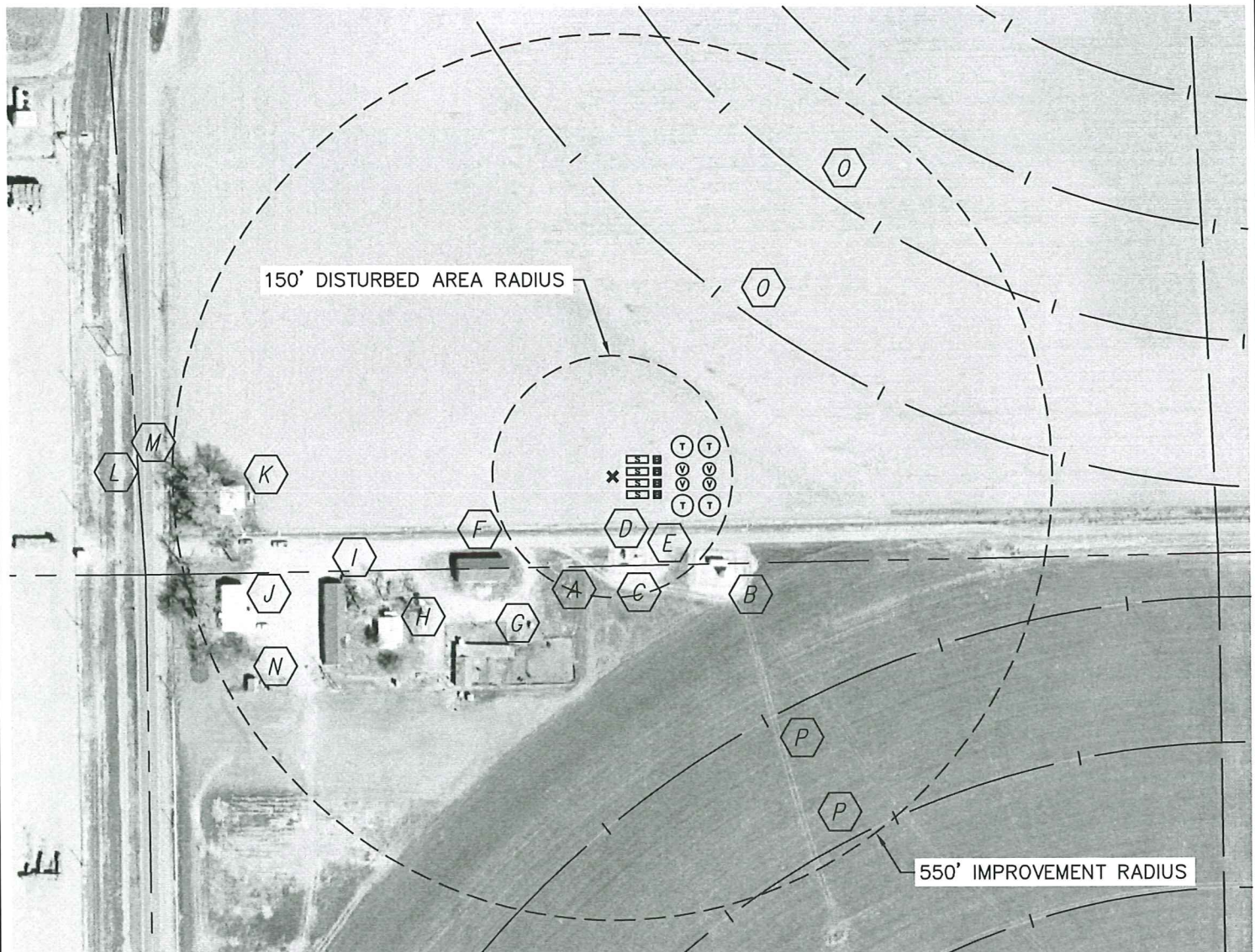


PRODUCTION FACILITY LOCATION DRAWING

FIVE RIVERS: USX K09-01D, K10-30D, USX K09-17D, K03-33D

SECTION: 3
TOWNSHIP: 4N
RANGE: 66W



IMPROVEMENTS:

REFERENCE POINT LOCATION:

LATITUDE: 40.33386°N
LONGITUDE: 104.77123°W
PDOP: 1.4
DATE: 3-31-2010
1/4, 1/4: SW1/4 SW1/4
FSL: 111'
FWL: 591'

DISTANCE TO WELL: 603' NW

ASSOCIATED NEW WELLS:

FIVE RIVERS: USX K09-01D,
K10-30D, USX K09-17D, K03-33D

ASSOCIATED EXISTING WELLS:
NONE

LEGEND:

- ✕ REFERENCE POINT
- ⊙ PROPOSED TANK
- ⊕ PROPOSED WATER VAULT
- ▬ PROPOSED SEPARATOR
- PROPOSED BURNER

ALL DISTANCES ARE APPROXIMATE

- | | | | |
|-----|---|-----|-------------------------------------|
| ⬡ A | NEAREST PROPERTY LINE 111' SOUTH | ⬡ K | BUILDING CORNER 464' WEST |
| ⬡ B | TANK BATTERY 150' SE | ⬡ L | PROPERTY LINE 591' WEST |
| ⬡ C | BERM AROUND METER HOUSES & SEPARATORS 89' SOUTH | ⬡ M | OVERHEAD UTILITY 561' WEST |
| ⬡ D | IRRIGATION DITCH 65' SOUTH | ⬡ N | BUILDING CORNER 510' SW |
| ⬡ E | DIRT ROAD 79' SOUTH | ⬡ O | IRR PIVOT WHEEL TRACK 263', 443' NE |
| ⬡ F | BUILDING CORNER 171' SW | ⬡ P | IRR PIVOT WHEEL TRACK 357', 537' SE |
| ⬡ G | BUILDING CORNER 244' SW | | |
| ⬡ H | BUILDING CORNER 317' SW | | |
| ⬡ I | BUILDING CORNER 362' SW | | |
| ⬡ J | BUILDING CORNER 479' SW | | |



PROJECT#: 2010055