

ENCANA OIL & GAS (USA) INC. - EBUS
DO NOT MAIL-3601 N STAGECOACH RD
LONGMONT, Colorado

Brown 41-5

Ensign 122

Post Job Summary

Cement Surface Casing

Prepared for: Kevin Brakovec
Date Prepared: 3/22/10
Version: 1

Service Supervisor: Rick Congdon

Submitted by: Tim Gilchrist

HALLIBURTON

HALLIBURTON

Service Supervisor Reports

Job Log

Date/Time	Chart #	Activity Code	Pump Rate	Cum Vol	Pump		Pressure (psig)	Comments
03/15/2010 11:49		Start Job						RIG CIRCULATED WELL 30 MINUTES PRIOR TO CEMENTING
03/15/2010 11:51		Test Lines					851.0	CALCULATED PRESSURE TO LIFT PIPE WAS 301 PSI
03/15/2010 11:52		Pump Spacer 1	5	10			95.0	RIG WATER WITH 2 LB. RED DYE ADDED
03/15/2010 11:56		Pump Lead Cement	5	79			119.0	295 SACKS SWIFCEM MIXED @ 14.2 #/GAL WITH RIG WATER
03/15/2010 12:13		Shutdown						TO DROP PLUG
03/15/2010 12:13		Drop Top Plug						CUSTOMER SUPPLIED WIPER PLUG PRELOADED
03/15/2010 12:13		Pump Displacement	5	52			36.0	RIG WATER WITH NO ADDITIVES
03/15/2010 12:21		Shutdown						ALLOW RIG CREW TO DIVERT RETURNS TO CATCH TANK
03/15/2010 12:27		Cement Returns to Surface	3				249.0	21 BBLS CEMENT RETURNED TO SURFACE
03/15/2010 12:36		Shutdown					316.0	LANDING BAFFLE INSTALLED 42' FROM BOTTOM @ 814' / PLUG DID NOT LAND
03/15/2010 12:37		Shut In Well					263.0	CALCULATED PRESSURE TO LAND PLUG WAS 244 PSI
03/15/2010 12:40		End Job						

The Road to Excellence Starts with Safety

Sold To #: 340078	Ship To #: 2773891	Quote #:	Sales Order #: 7239625
Customer: ENCANA OIL & GAS (USA) INC. - EBUS		Customer Rep: PILCHER, ED	
Well Name: Brown		Well #: 41-5	API/UWI #: 05-123-30609-00
Field: WATTENBERG	City (SAP): FREDERICK	County/Parish: Weld	State: Colorado
Legal Description: Section SWSE32 Township 2N Range 68W			
Lat: N 40.09 deg. OR N 40 deg. 5 min. 23.676 secs.		Long: W 105.024 deg. OR W -106 deg. 58 min. 34.752 secs.	
Contractor: Ensign		Rig/Platform Name/Num: #122	
Job Purpose: Cement Surface Casing			
Well Type: Development Well		Job Type: Cement Surface Casing	
Sales Person: JACOBS, JESS		Srvc Supervisor: CONGDON, RICHARD	MBU ID Emp #: 320306

Job Personnel

HES Emp Name	Exp Hrs	Emp #	HES Emp Name	Exp Hrs	Emp #	HES Emp Name	Exp Hrs	Emp #
CONGDON, RICHARD S.		320306	COPELAND, GEORGE Willard		429242	LAVALLEY, LARRY P		419296
SIPNEFSKI, ROBERT Anthony		419391						

Equipment

HES Unit #	Distance-1 way	HES Unit #	Distance-1 way	HES Unit #	Distance-1 way	HES Unit #	Distance-1 way
10679720C	15 mile	10948695	15 mile	11019275C	15 mile	11341988C	15 mile

Job Hours

Date	On Location Hours	Operating Hours	Date	On Location Hours	Operating Hours	Date	On Location Hours	Operating Hours

TOTAL Total is the sum of each column separately

Job

Formation Name	Formation Depth (MD)	Top	Bottom	Form Type	Job depth MD	Job Depth TVD	Water Depth	Perforation Depth (MD)	From	To
				BHST	868. ft	868. ft	5. ft			

Job Times

Called Out	Date	Time	Time Zone
On Location	15 - Mar - 2010	03:00	MST
Job Started	15 - Mar - 2010	11:49	MST
Job Completed	15 - Mar - 2010	12:40	MST
Departed Loc	15 - Mar - 2010	14:00	MST

Well Data

Description	New / Used	Max pressure psig	Size in	ID in	Weight lbm/ft	Thread	Grade	Top MD ft	Bottom MD ft	Top TVD ft	Bottom TVD ft
Open Hole				12.25				.	868.		
Surface Casing	New		8.625	8.097	24.	8 RD	J-55	.	856.		

Tools and Accessories

Type	Size	Qty	Make	Depth	Type	Size	Qty	Make	Depth	Type	Size	Qty	Make
Guide Shoe					Packer					Top Plug			
Float Shoe					Bridge Plug					Bottom Plug			
Float Collar					Retainer					SSR plug set			
Insert Float										Plug Container			
Stage Tool										Centralizers			

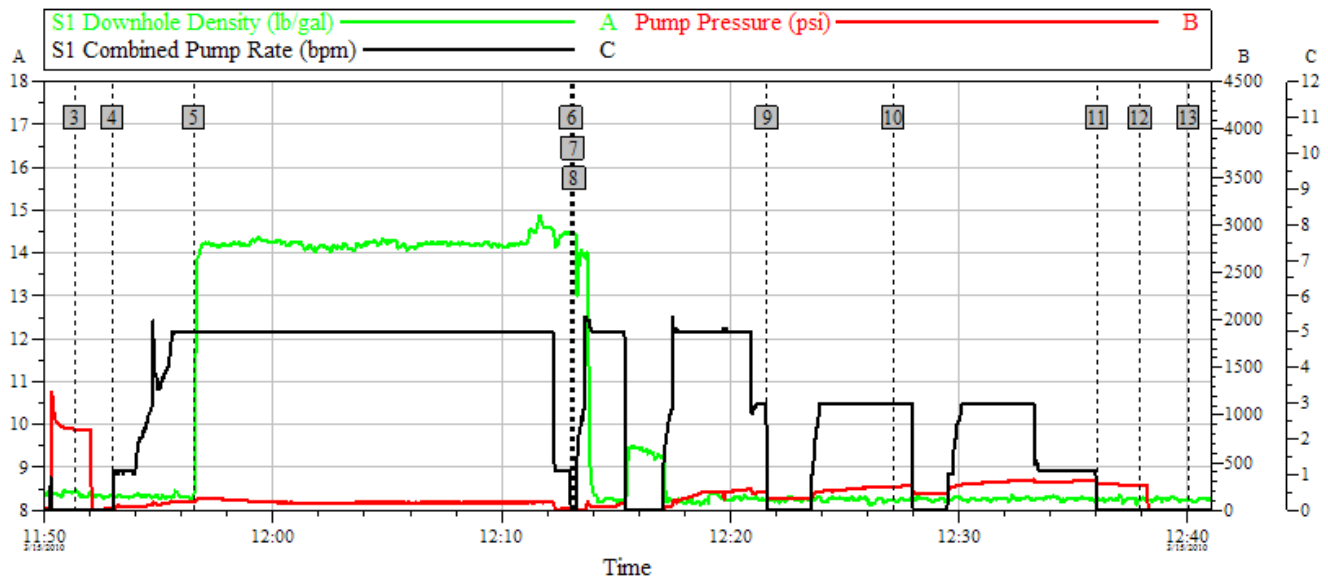
Miscellaneous Materials

Gelling Agt	Conc	Surfactant	Conc	Acid Type	Qty	Conc	%
Treatment Fld	Conc	Inhibitor	Conc	Sand Type	Size	Qty	

Fluid Data									
Stage/Plug #: 1									
Fluid #	Stage Type	Fluid Name	Qty	Qty uom	Mixing Density lbm/gal	Yield ft ³ /sk	Mix Fluid Gal/sk	Rate bbl/min	Total Mix Fluid Gal/sk
1	Water Spacer		10.00	bbl	8.33	.0	42.0	5.0	
2	Lead Cement	SWIFCEM (TM) SYSTEM (452990)	295.0	sacks	14.2	1.51	7.53	5.0	7.53
2 %		CAL-SEAL 60, 50 LB BAG (101217146)							
2 %		ECONOLITE (100001580)							
0.2 %		VERSASET, 55 LB SK (101376573)							
7.53 Gal		FRESH WATER							
3	Water Displacement		52.00	bbl	8.33	.0	42.0	5.0	
Calculated Values		Pressures		Volumes					
Displacement		Shut In: Instant		Lost Returns		Cement Slurry		Pad	
Top Of Cement		5 Min		Cement Returns		Actual Displacement		Treatment	
Frac Gradient		15 Min		Spacers		Load and Breakdown		Total Job	
Rates									
Circulating		Mixing		Displacement		Avg. Job			
Cement Left In Pipe	Amount	42 ft	Reason	Shoe Joint					
Frac Ring # 1 @	ID	Frac ring # 2 @	ID	Frac Ring # 3 @	ID	Frac Ring # 4 @	ID		
The Information Stated Herein Is Correct				Customer Representative Signature					

ENCANA OIL & GAS (USA) INC.

BROWN 41-5



Global Event Log

Intersection					SDD	SPPP	SCPR	Intersection					SDD	SPPP	SCPR
3	Test Lines	11:51:21	8.410	851.0	0.000	4	Dyed Water	11:52:58	8.350	16.00	0.000				
5	14.2ppg Swiftcem	11:56:34	8.472	94.00	5.000	6	Shutdown	12:13:03	14.47	7.029	0.000				
7	Drop Top Plug	12:13:08	14.48	5.000	0.000	8	Water Displacement	12:13:11	14.45	5.000	0.000				
9	Shutdown	12:21:37	8.247	139.6	0.000	10	Cement Returns	12:27:09	8.230	249.0	3.000				
11	Shutdown	12:36:02	8.232	284.4	0.000	12	Shut In Well	12:37:55	8.250	263.0	0.000				
13	End Job	12:40:01	8.278	3.000	0.000										

Customer: ENCANA
Well Description: 8.625" SURFACE

Job Date: 15-Mar-2010
UWI: 05-123-30609-00

Sales Order #: 7239625

HALLIBURTON
OptiCem v6.4.2
15-Mar-10 12:59