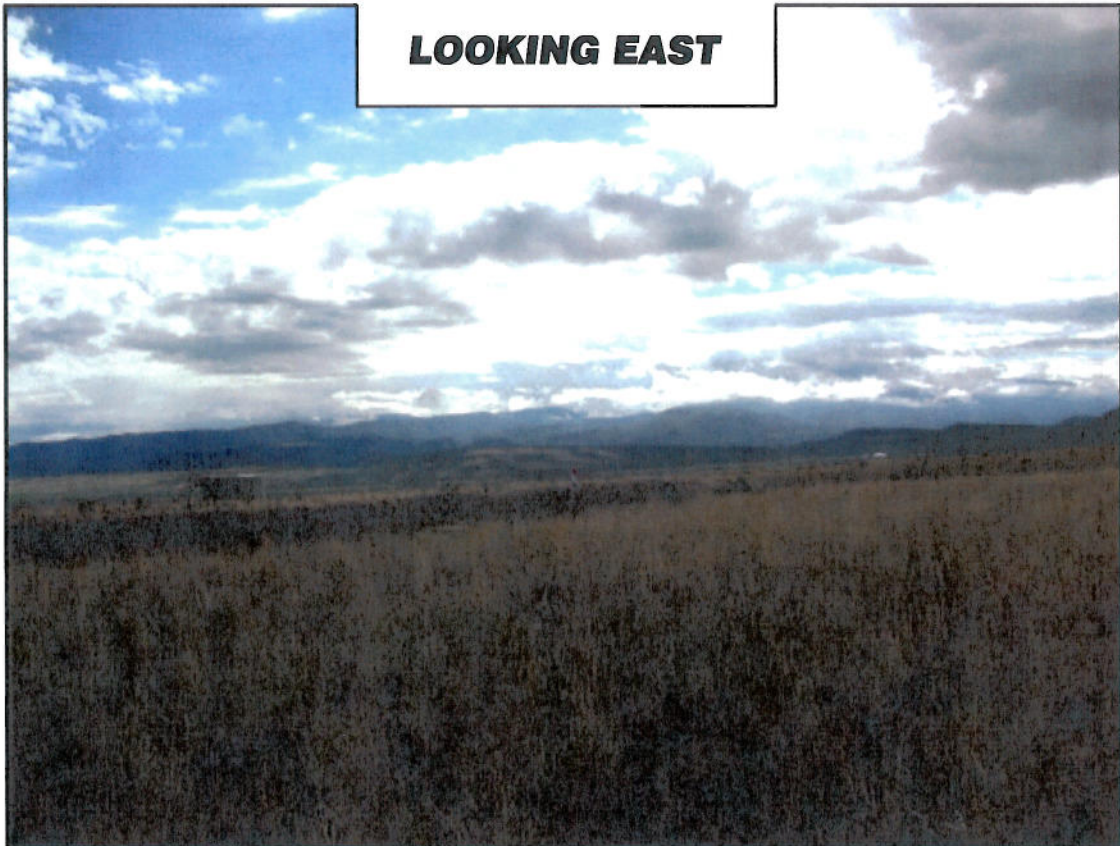


**LOOKING NORTH**

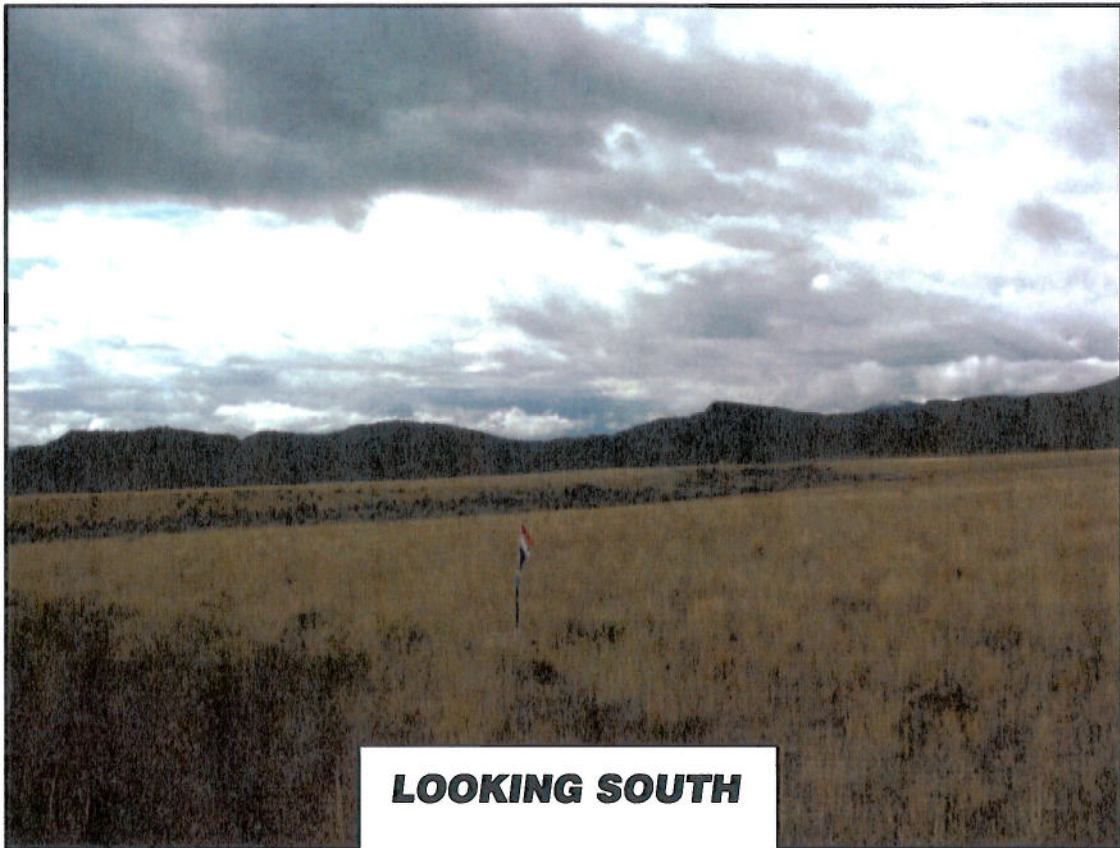
*EnCana Oil & Gas (USA) Inc.  
J12A Well Pad  
Section 12, T7S, R93W, 6th P.M.*

*Date Taken:  
9/8/10*



**LOOKING EAST**





**LOOKING SOUTH**

*EnCana Oil & Gas (USA) Inc.  
J12A Well Pad  
Section 12, T7S, R93W, 6th P.M.*

*Date Taken:  
9/8/10*



**LOOKING WEST**