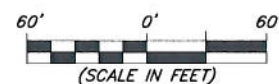


NW1/4 SE1/4, SECTION 12, T7S, R93W, 6th P.M.
WELL PAD LAYOUT



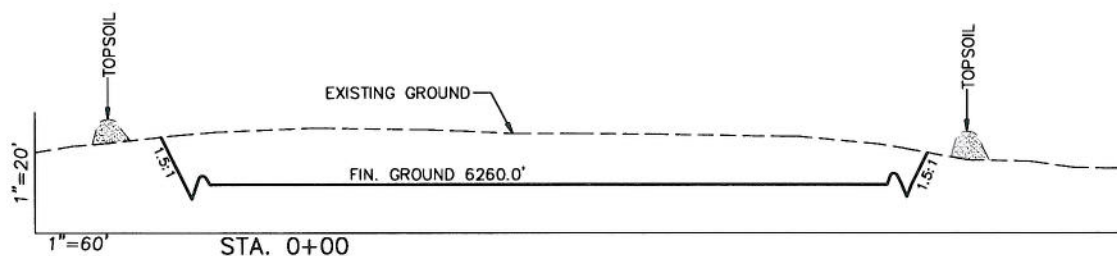
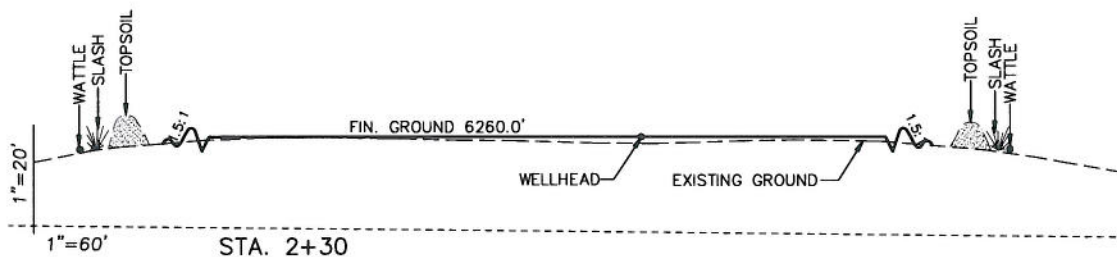
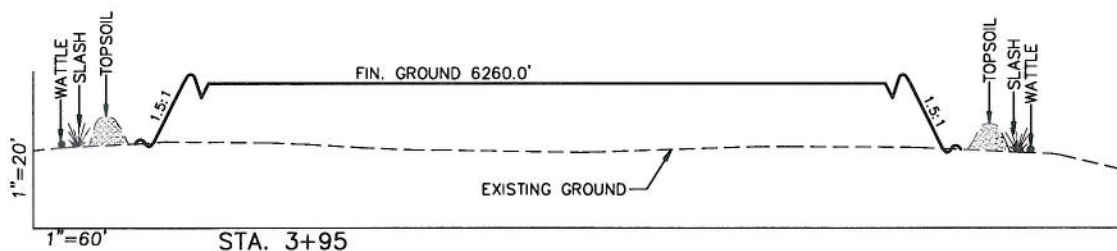
906 Main Street
Evanston, Wyoming 82930
Phone No. (307) 789-4545

<i>Well Pad Layout</i>		Scale: 1" = 60'	SHEET 3 OF 10
Project No.	10-04-66	Date Surveyed: 8/12/10	
Date Drawn: 9/07/10	Latest Revision Date:		

EnCana Oil & Gas (USA) Inc.

J12A Well Pad

CROSS SECTIONS



SURFACE DISTURBANCE (IN ACRES)	
Well Pad	3.3
Side Slopes	0.4
Stockpiles & Stormwater	0.95
TOTAL	4.65

NOTE:
ALL CUT AND FILL
SLOPES ARE AT 1.5:1
UNLESS OTHERWISE
NOTED.

EARTHWORK QUANTITIES (in Cubic Yards w/ 0% shrink/swell)				
ITEM	CUT	FILL	6" TOPSOIL	EXCESS
PAD	13688	13075	Topsoil not included in Excavation	*613
PIT	0	0		0
TOTALS	13688	13075	2970	*613

* EXCESS MATERIAL TO BE USED
TO CONSTRUCT ACCESS RAMP



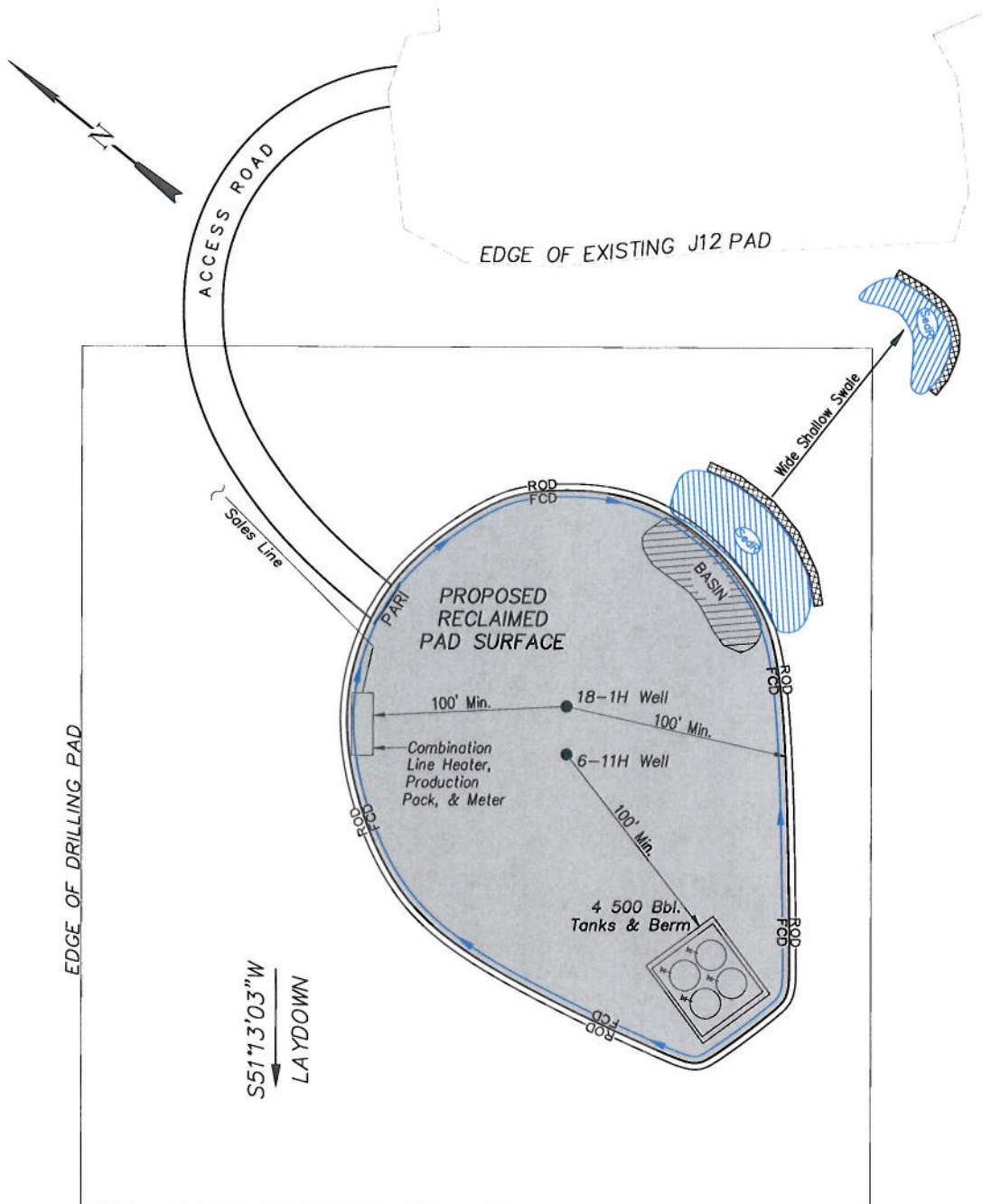
906 Main Street
Evanston, Wyoming 82930
Phone No. (307) 789-4545

Cross Sections		Scale: As Shown	SHEET
Project No.	10-04-66	Date Surveyed: 8/12/10	4 OF 10
Date		Latest Revision	
Drawn: 9/07/10		Date:	

EnCana Oil & Gas (USA) Inc.

J12A Well Pad

PRODUCTION SCHEMATIC



NOTES:

1. Set Tanks High so pad Entrance & Tank Area Can Drain to Pad Basin
2. Gravel Pad 75' from Wells & Around Tanks and Separators
3. Pad Drains to Pad Basin at a 3% to 5% slope
4. BMP Selection and Position may change Depending on Actual Conditions Encountered During the Construction Process

NOTE:

Actual Equipment Layout and Reclaimed Pad Surface Area May Change due to Production Requirements or Site Conditions.

ESTIMATED AREAS
 RECLAIMED AREA: 3.65 ACRES
 UNRECLAIMED AREA: 1.0 ACRES

LEGEND

- SLASH = SLASH
- ST = SEDIMENT TRAP
- SedR = SEDIMENT RESERVOIR
- R.O.D. = RUN-ON DIVERSION
- PERIMETER CONTROL (WATTLES)
- CSD = CUT SLOPE DIVERSION (BERM TOE OF CUT SLOPE)
- D = FILL DIVERSION TO SEDIMENT TRAP
- VOB = VEGETATION BUFFER (UNDISTURBED LAND INSIDE PC)
- FCD = FLOW CONTROL DITCH
- PARI = PAD/ACCESS ROAD INTERFACE
- LEVEL SPREADER
- TOE BERM (PLACED AT TOE OF ALL FILL SLOPES/STOCKPILES)
- TOPSOIL BERM
- SEED, EOB & FLEX
- SEED



906 Main Street
 Evanston, Wyoming 82930
 Phone No. (307) 789-4545



Production Schematic

Project No. 10-04-66
 Date 9/07/10
 Drawn:

Scale: 1" = 50'

Date 8/12/10
 Surveyed:
 Latest Revision
 Date:

SHEET

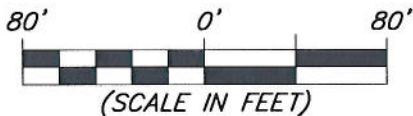
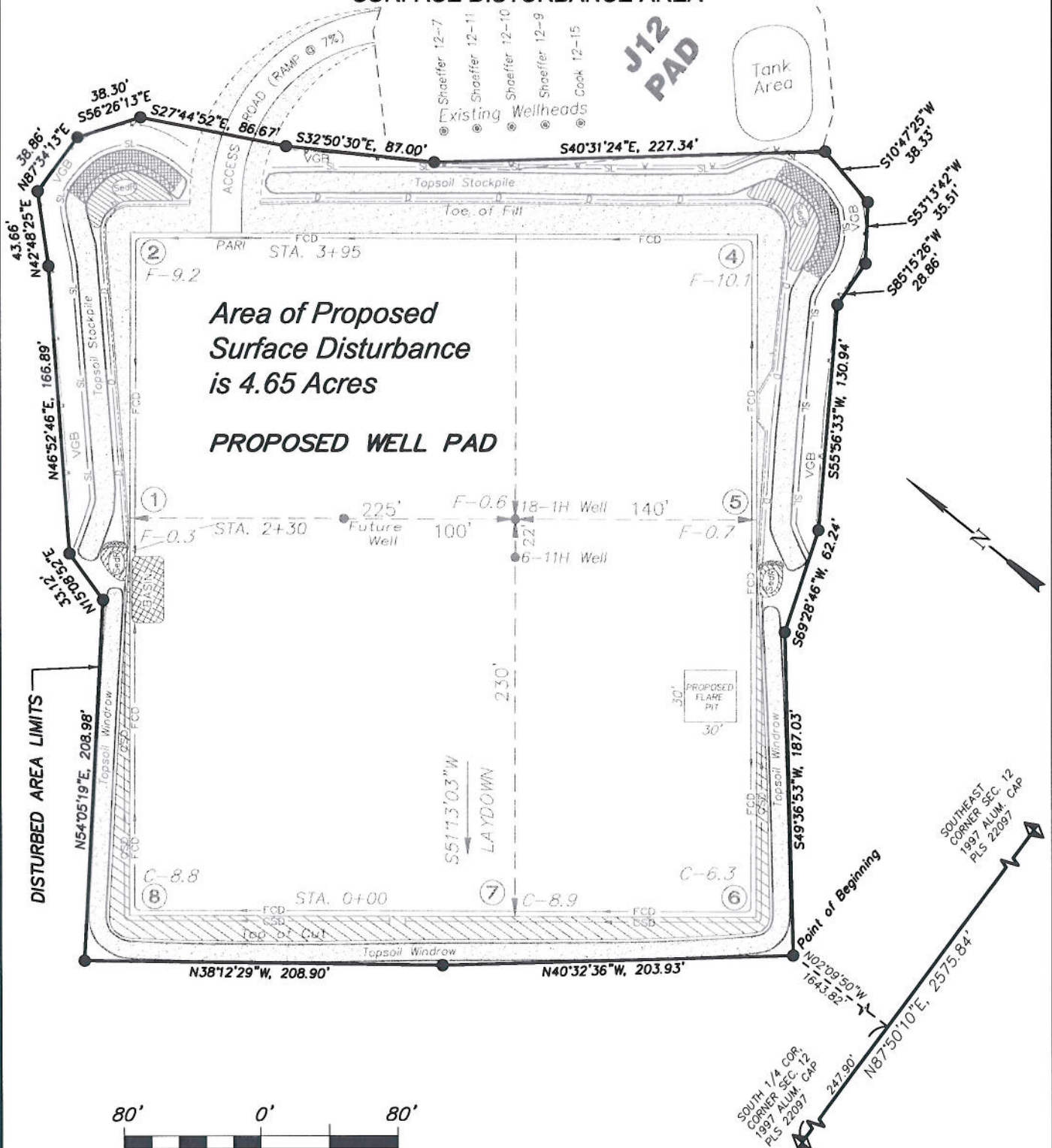
6
 OF 10

EnCana Oil & Gas (USA) Inc.

J12A Well Pad

Section 12, T7S, R93W, 6th P.M.

SURFACE DISTURBANCE AREA



906 Main Street
Evanston, Wyoming 82930
Phone No. (307) 789-4545

Surface Disturbance		Scale: 1" = 80'	SHEET 7 OF 10
Project No.	10-04-66	Date Surveyed: 8/12/10	
Date Drawn:	9/07/10	Latest Revision Date:	