

LEGEND

- PROPOSED J12A LOCATION
- EXISTING ROAD



Wasatch Surveying Associates

906 Main Street Evanston, Wyoming 82930
Phone No. (307) 789-4545 Fax 307-789-5722



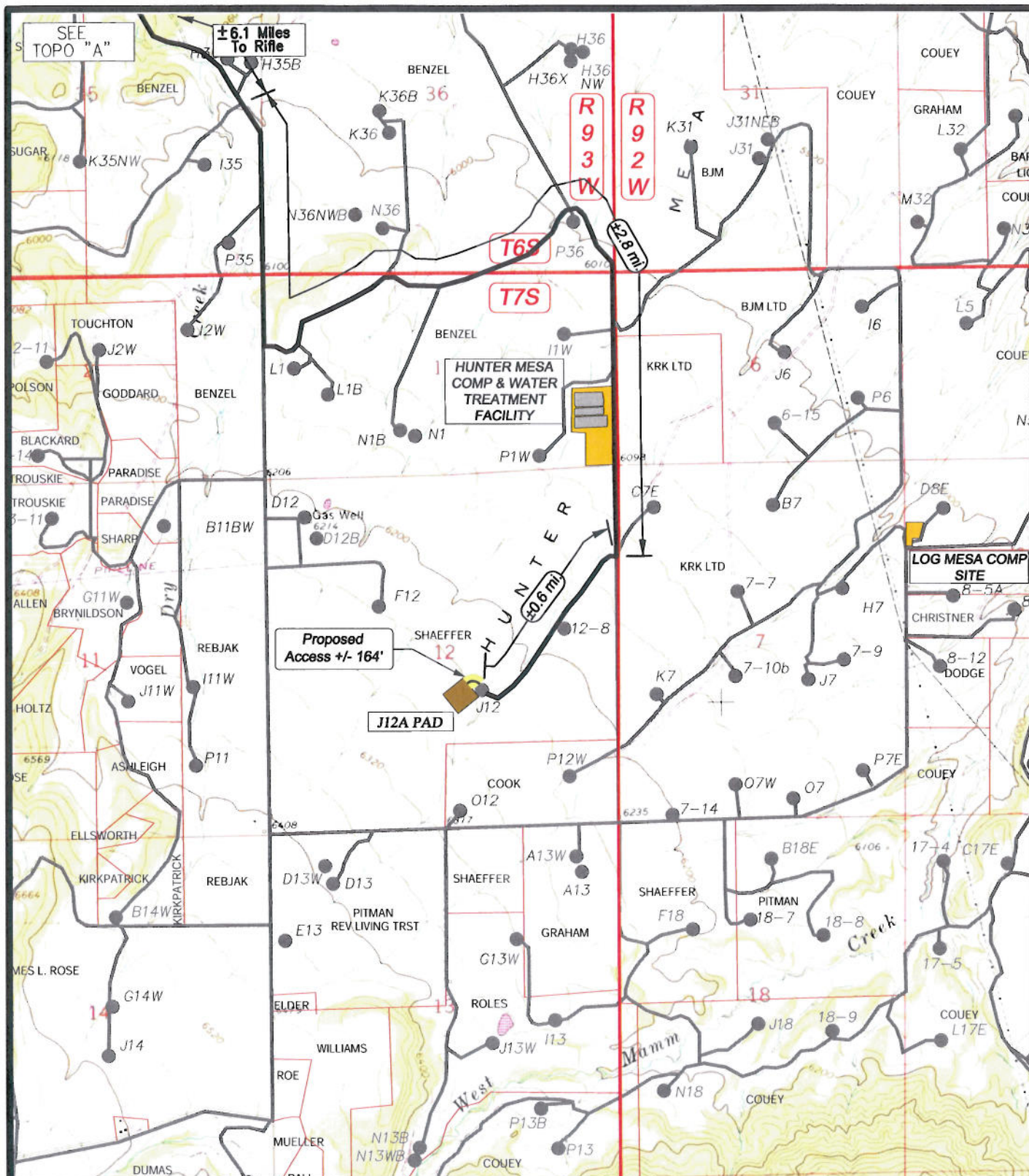
EnCana Oil & Gas (USA) Inc.

J12A PAD ACCESS
SECTION 12, T7S, R93W, 6th, P.M.
GARFIELD COUNTY, COLORADO

TOPO A

PROJECT NUMBER
10-04-66
DATE: 9/7/10
SCALE: 1:100,000

8
of 10



LEGEND

- PROPOSED WELL PAD
- PROPOSED ACCESS ROAD
- EXISTING ROAD



Wasatch Surveying Associates

906 Main Street Evanston, Wyoming 82930
Phone No. (307) 789-4545 Fax 307-789-5722

EnCana Oil & Gas (USA) Inc.

J12A PAD ACCESS
SECTION 12, T7S, R93W, 6th, P.M.
GARFIELD COUNTY, COLORADO

TOPO B

PROJECT NUMBER
10-04-66

DATE: 9/7/10

SCALE: 1" = 2000'

9
of 10