



Copyright © 2003 by Epoch Well Services, Inc.

Houston, TX
(281) 784-5500
Bakersfield, CA
(661) 328-1595
New Iberia, LA
(337) 364-2322
Anchorage, AK
(907) 561-2465

MUDLOG MD

COMPANY	ExxonMobil Production
WELL	PCU 297-11C6
FIELD	Piceance Creek Unit
REGION	Rocky Mountains
COORDINATES	39.896082 N 108.254572 W
ELEVATION	GL: 6965.3' KB: 6995.5'
COUNTY, STATE	Rio Blanco, CO
API INDEX	051031147200
SPUD DATE	02/12/2010
CONTRACTOR	HP Drilling
CO. REP.	M. Sadler / J. Wood
RIG/TYPE	#326/ Flex-Rig 4
LOGGING UNIT	#36
GEOLOGISTS	J. Kokes / D. Thibodeaux C. Record / J. Keevan
ADD. PERSONS	H. Strickland / J. Yeagar P. Strickland/ D. Lockhart
CO. GEOLOGIST	Chris Alba

LOG INTERVAL

DEPTHS:	3824'	TO	12688'
DATES:	04/01/2010	TO	06/23/2010
SCALE:	1" = 100'		

CASING DATA

16"	AT	150'
10 3/4"	AT	3809'
7"	AT	8665'
	AT	

HOLE SIZE

14 3/4"	TO	3824'
9 7/8"	TO	8680'
6 1/8"	TO	12688'
	TO	

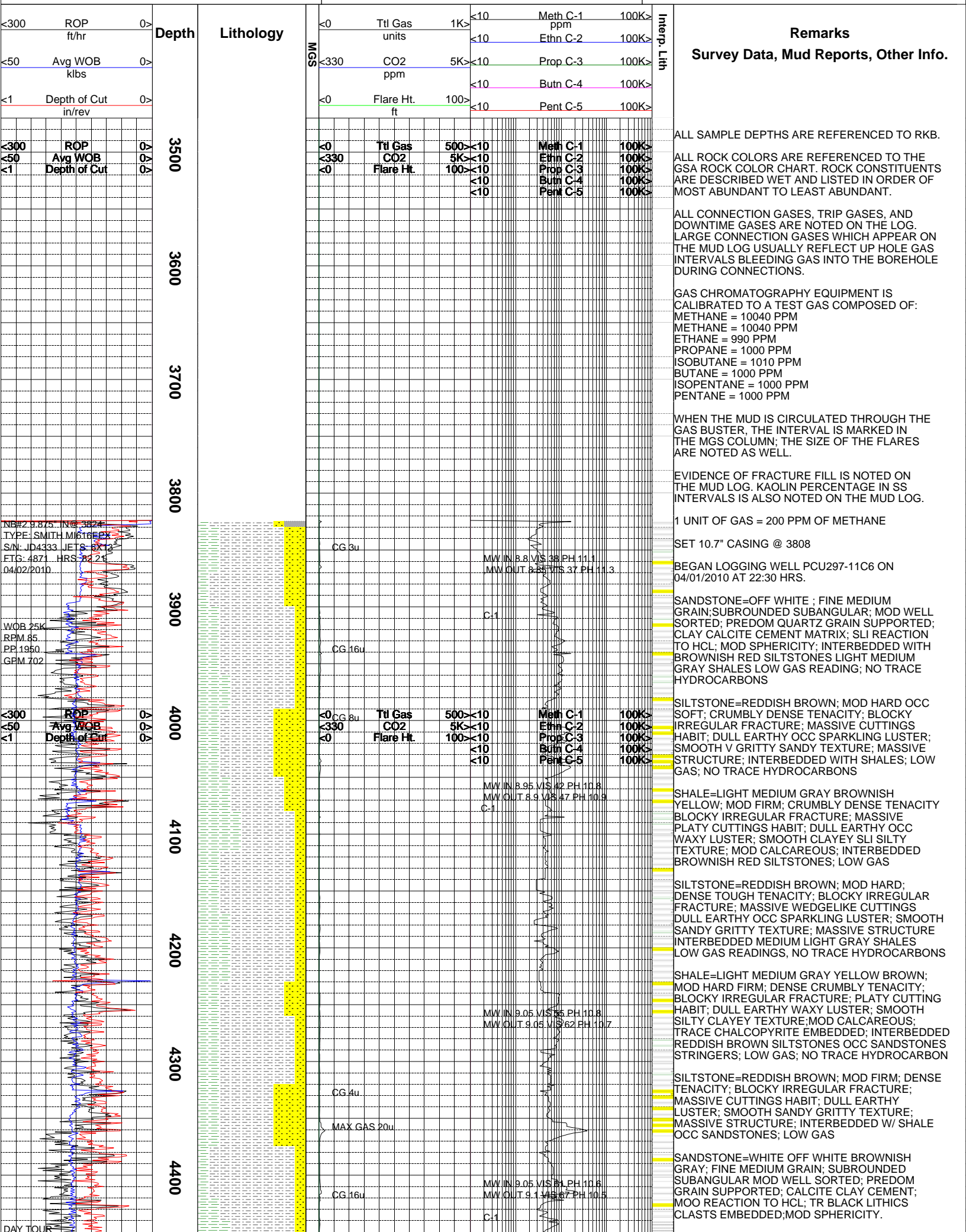
MUD TYPES

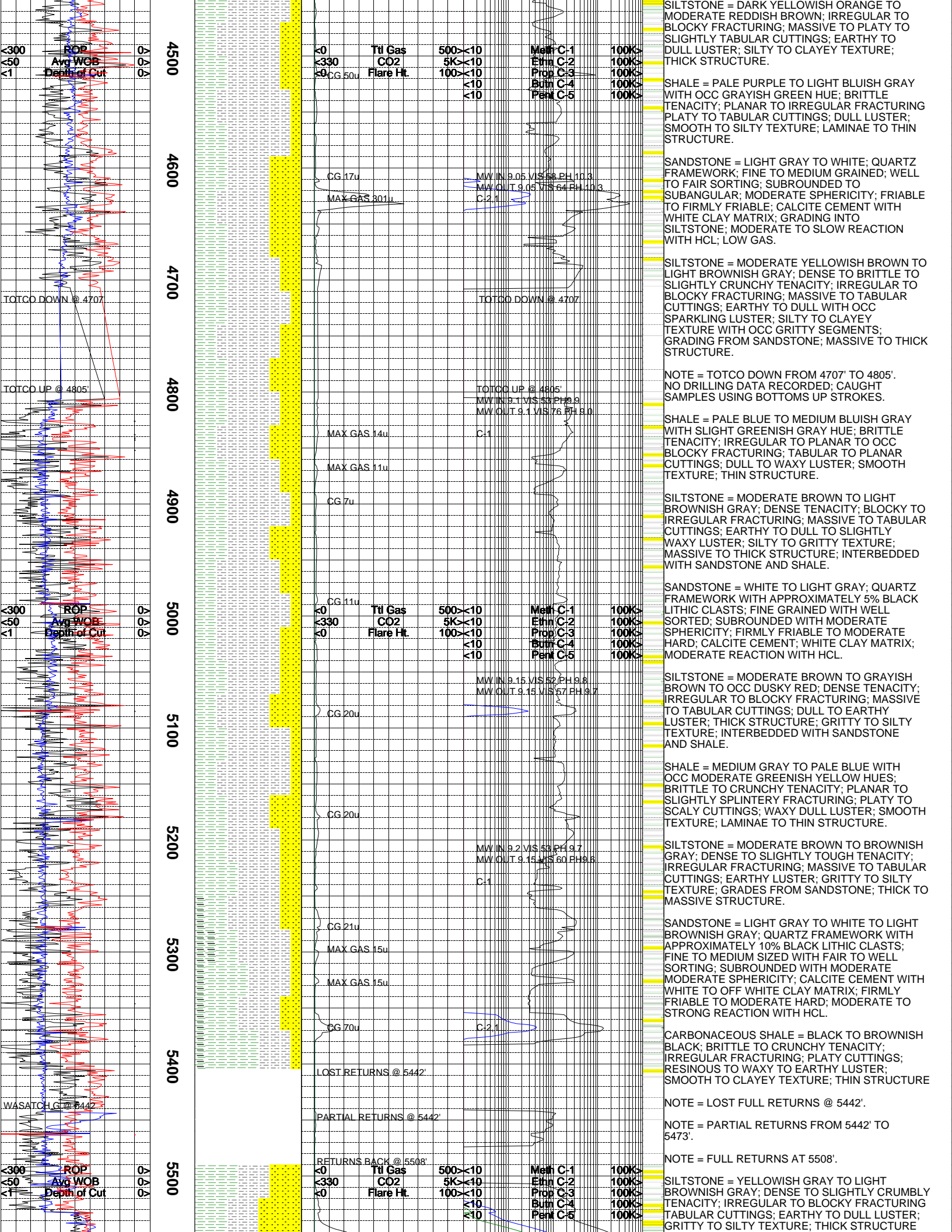
WATER BASED SPUD MUD	TO	3824'
LSND	TO	12688'
	TO	
	TO	

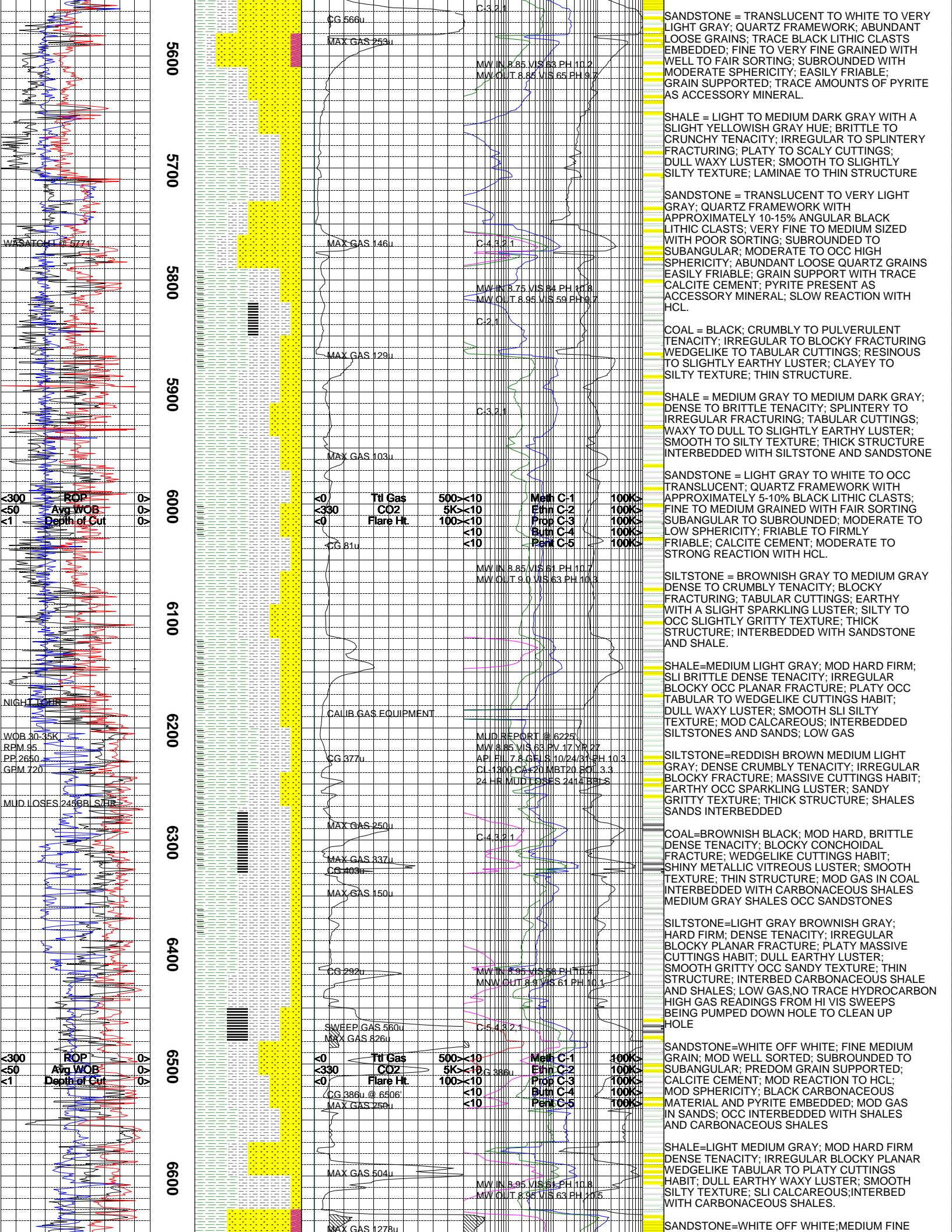
ABBREVIATIONS

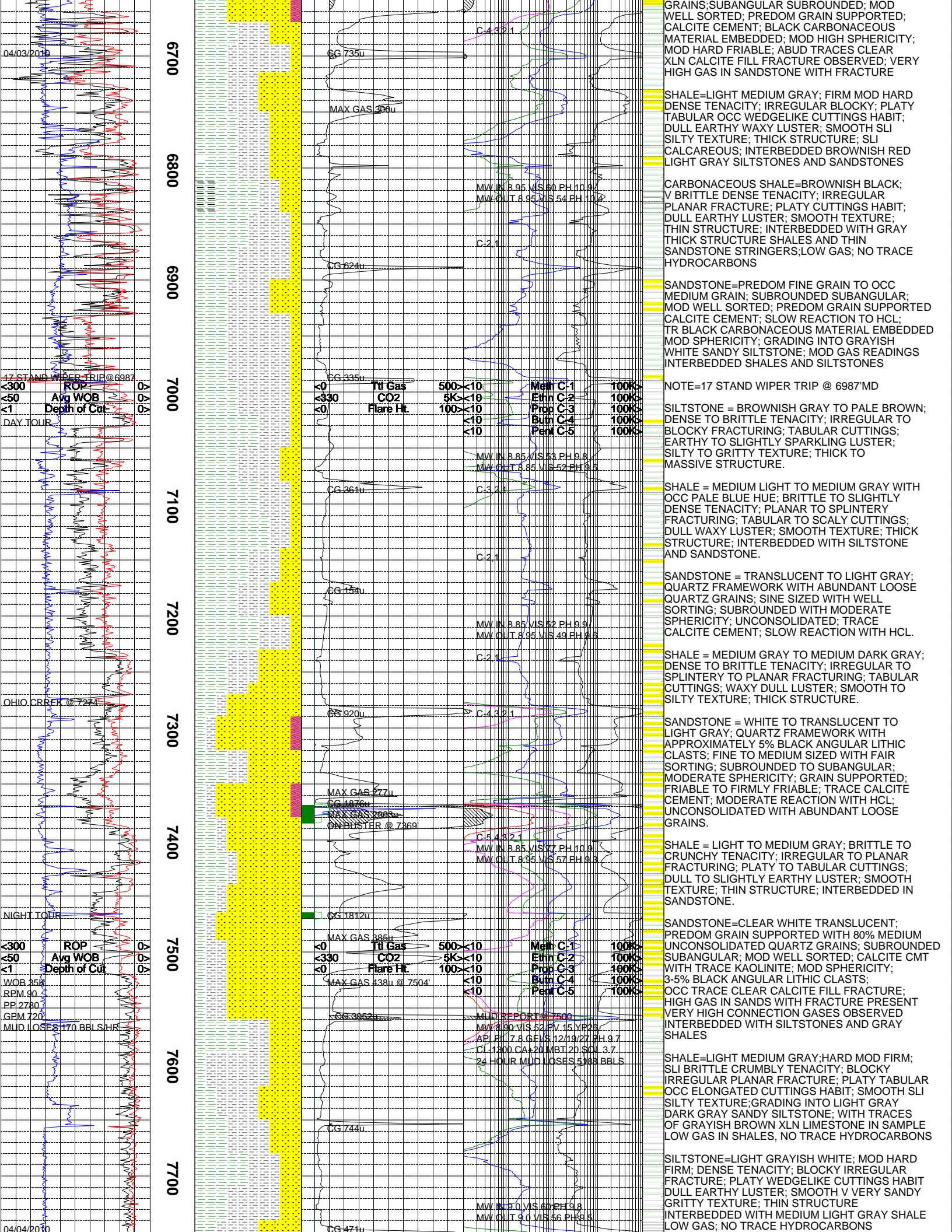
<i>NB</i> NEWBIT	<i>PV</i> PLASTIC VISCOSITY	<i>LC</i> LOST CIRCULATION
<i>RRB</i> RERUN BIT	<i>YP</i> YIELD POINT	<i>CO</i> CIRCULATE OUT
<i>CB</i> CORE BIT	<i>FL</i> FLUID LOSS	<i>NR</i> NO RETURNS
<i>WOB</i> WEIGHT ON BIT	<i>CL</i> PPM CLORIDE ION	<i>TG</i> TRIP GAS
<i>RPM</i> ROTARY REV/MIN	<i>Rm</i> MUD RESISTIVITY	<i>SG</i> SURVEY GAS
<i>PP</i> PUMP PRESSURE	<i>Rmf</i> FILTRATE RESISTIVITY	<i>WG</i> WIPER GAS
<i>SPM</i> STROKES/MIN	<i>PR</i> POOR RETURNS	<i>CG</i> CONNECTION GAS
<i>MW</i> MUD WEIGHT	<i>LAT</i> LOGGED AFTER TRIP	
<i>VIS</i> FUNNEL VISCOSITY	<i>LAS</i> LOGGED AFTER SURVEY	

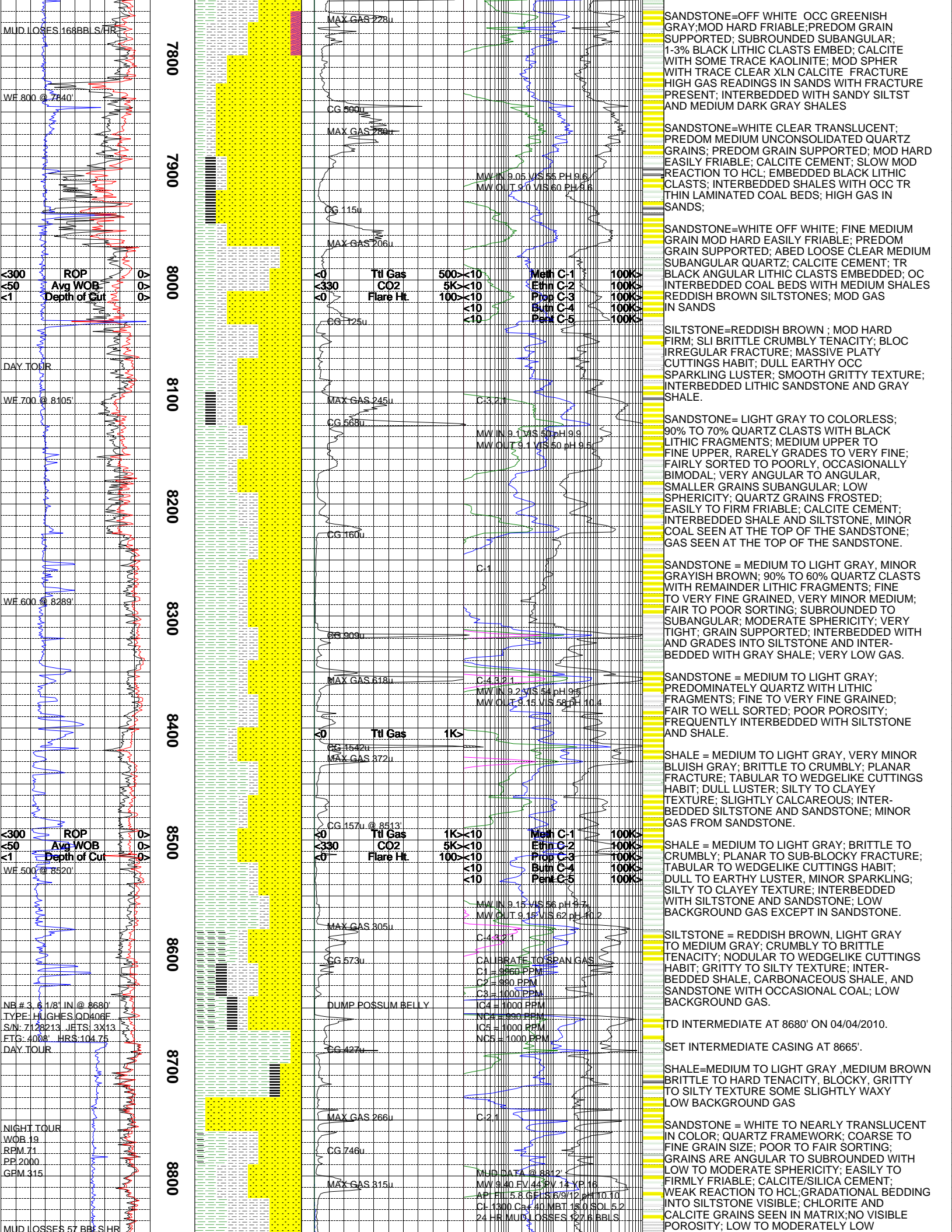


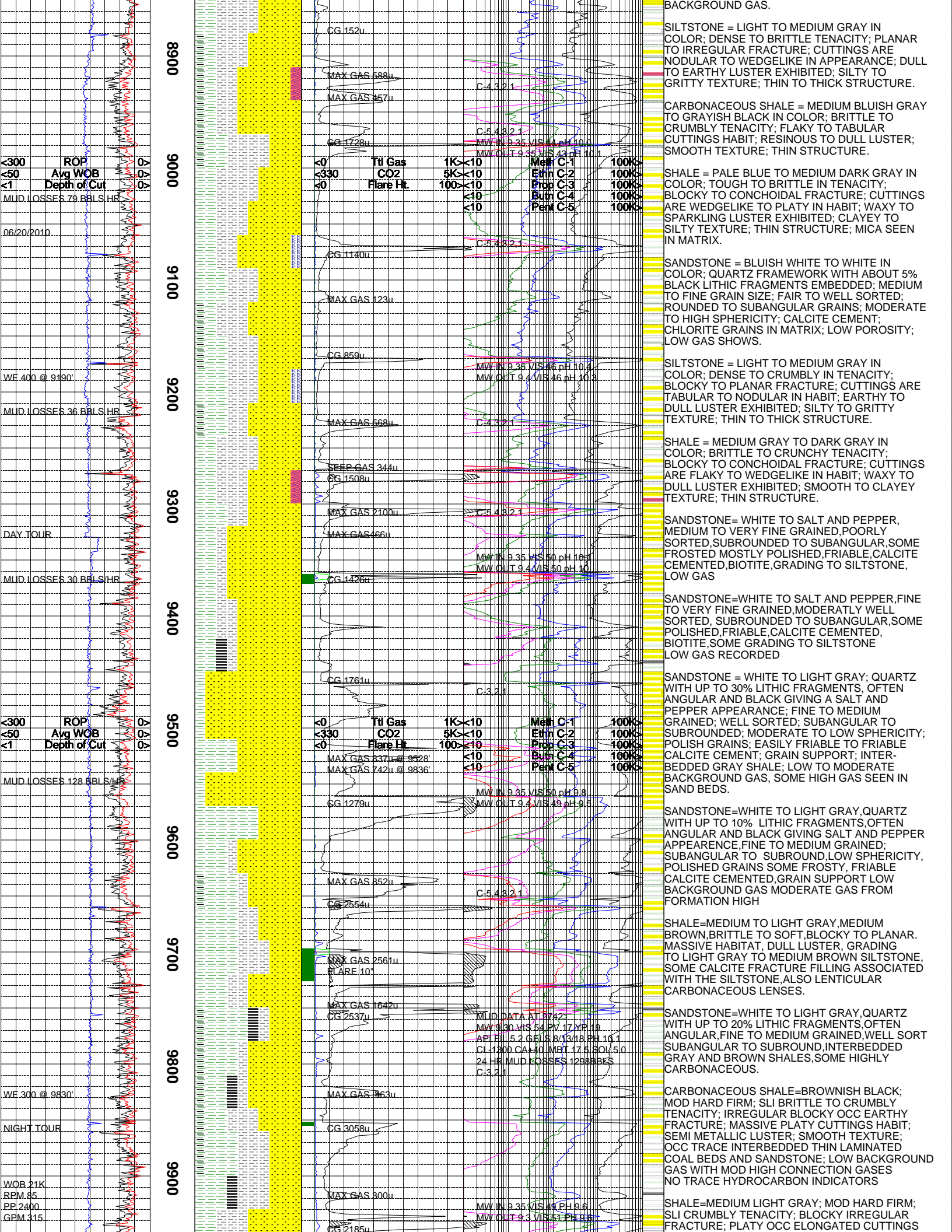


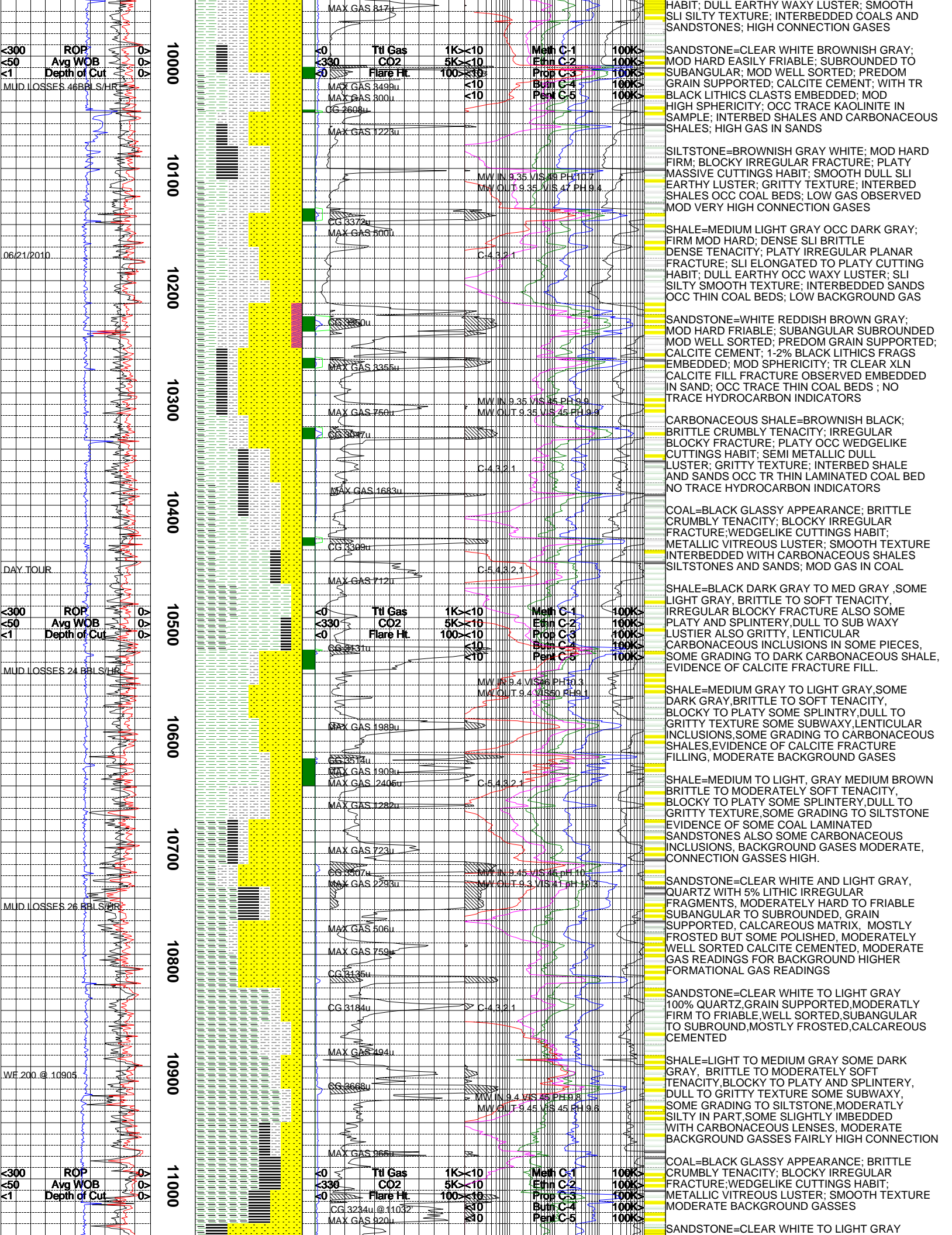


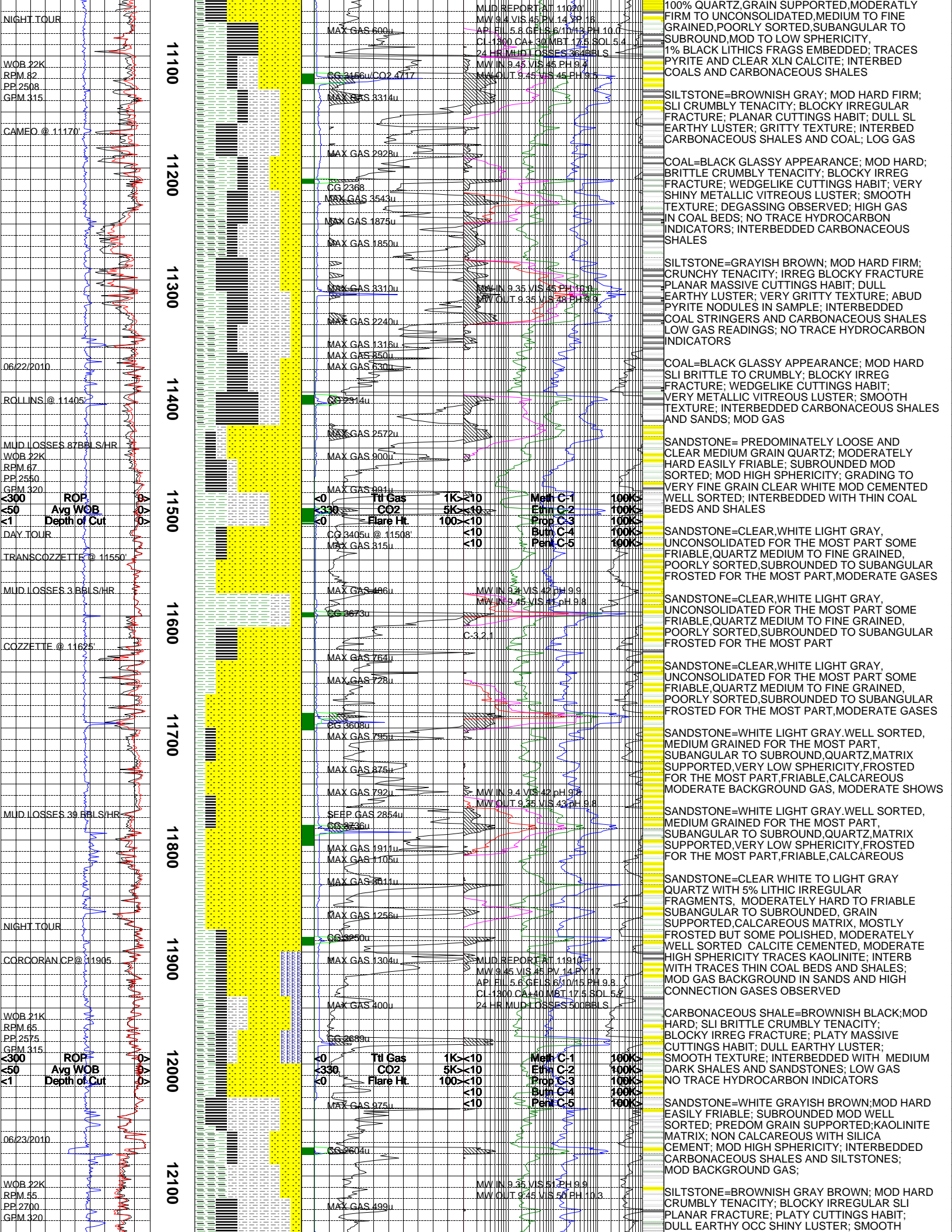


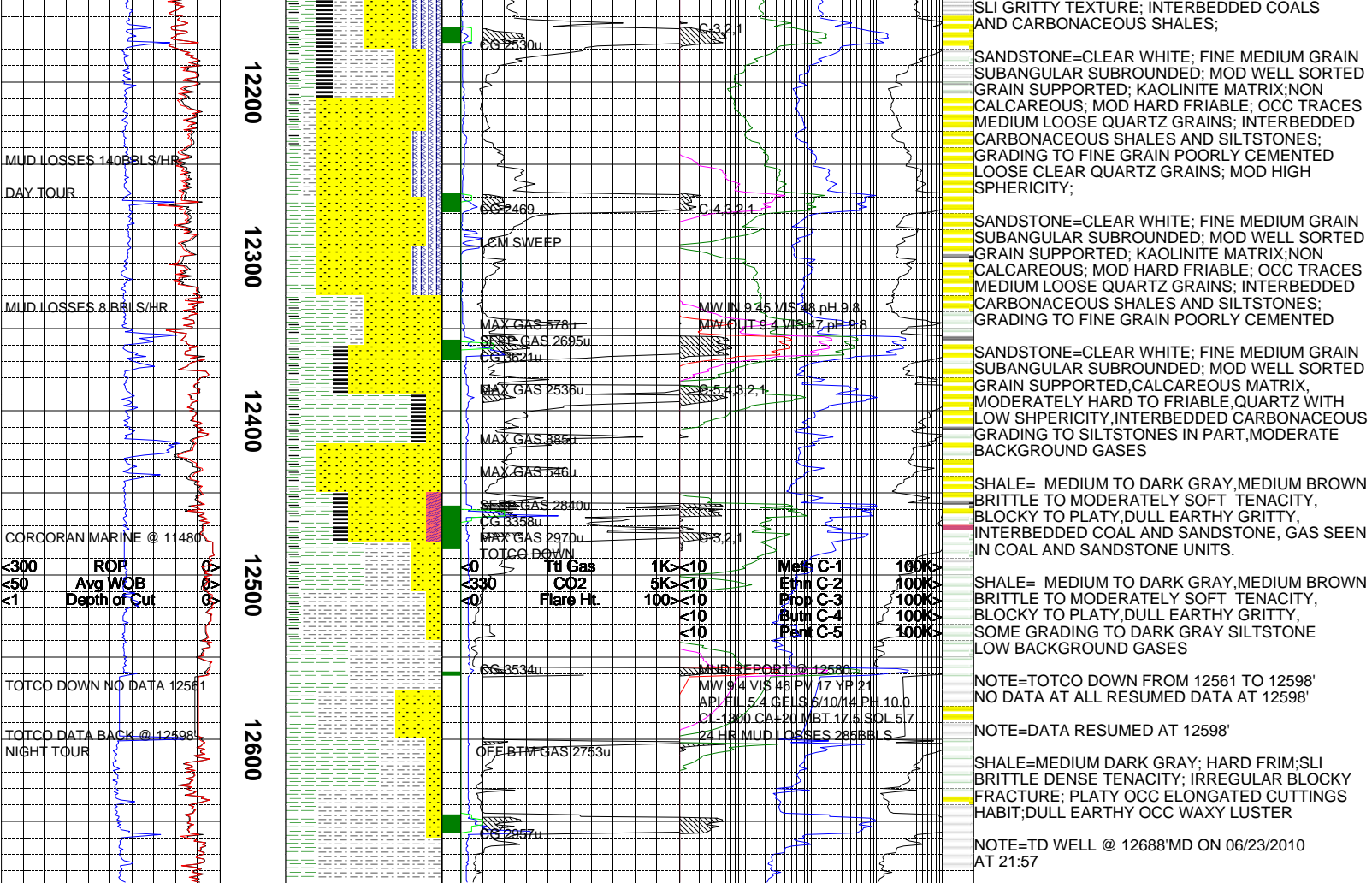












The log data, interpretations and recommendation provided by Epoch are inferences and assumptions based on measurements of drilling fluids. Such inferences and assumptions are not infallible and reasonable professionals may differ. Epoch does not represent or warrant the accuracy, correctness or completeness of any log data, interpretations, recommendations or information provided by Epoch, its officers, agents or employees. Epoch does not and cannot guarantee the accuracy of any such interpretation of the log data, interpretations or recommendations and Company is fully responsible for all decisions and actions it takes based on such log data, interpretations and recommendations.