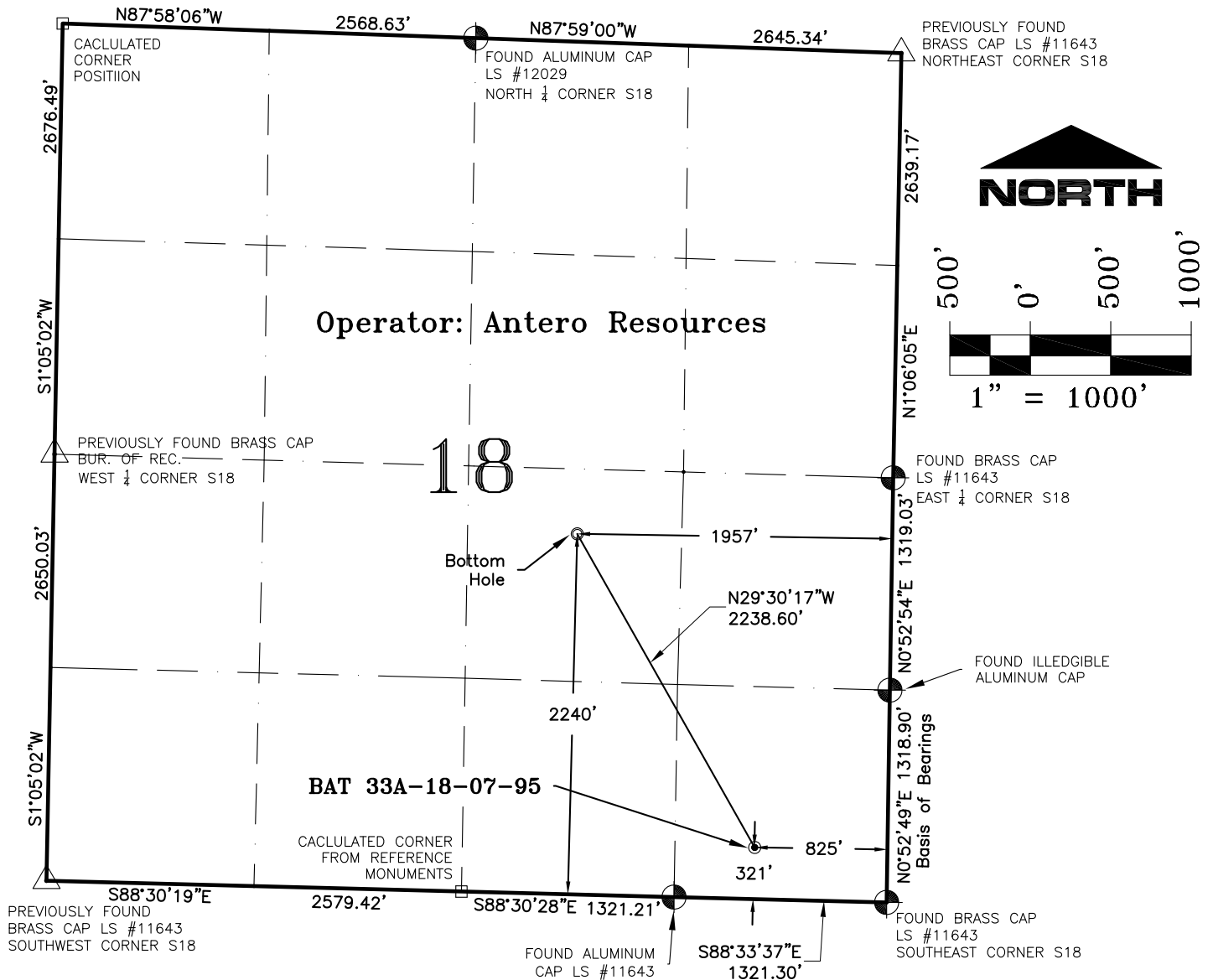


# SECTION 18, T7S, R95W, 6th P.M.



## NOTES:

1. GEODETIC POSITIONS ARE SHOWN IN DECIMAL DEGREES.
2. UNITS OF LINEAR MEASUREMENT: U.S. SURVEY FOOT
3. ELEVATIONS ARE BASED ON GPS OBSERVATIONS USING GEOID 03, NAVD88.
4. ALL SURFACE (SHL) AND BOTTOM (BHL) HOLE LOCATIONS ARE MEASURED AT 90° ANGLES FROM SECTION LINES.
5. BASIS OF BEARING: N00°52'49"E BETWEEN FOUND MONUMENTS AS SHOWN HEREON.
6. EXISTING GROUND ELEVATION: 5441'. PROPOSED PAD ELEVATION: 5441.2'.
7. GPS OPERATOR: KYLE TESKY OBSERVED AN AVERAGE PDOP OF  $\leq 3.0$  FOR ALL SURVEY MEASUREMENTS DEPICTED ON THIS AND SUBSEQUENT SHEETS. ALL GPS OBSERVATIONS ARE IN COMPLIANCE WITH COGCC RULE NO. 215
8. SURFACE USE: AGRICULTURAL LANDS
9. USGS QUAD MAP: PARACHUTE

## SURVEYORS STATEMENT:

I, ELWOOD BARRY GILES, BEING A REGISTERED LAND SURVEYOR IN THE STATE OF COLORADO, DO HERBY CERTIFY THAT THIS PLAT REPRESENTS A SURVEY PERFORMED BY ME OR UNDER MY DIRECT SUPERVISION SEPTEMBER 17, 2010 AND IS TRUE TO THE BEST OF MY KNOWLEDGE AND BELIEF.

29 SEPT, 2010

ELWOOD BARRY GILES  
COLORADO LS 38150

DATE

WELL No.	SECTION LINES TIES		NAD 83		NAD 27	
BAT 33A-18-07-95	FOOTAGES	FOOTAGES	LATITUDE	LONGITUDE	LATITUDE	LONGITUDE
SURFACE HOLE	321' FSL	825' FEL	39.431305°	108.033251°	39.431327°	108.032622°
BOTTOM HOLE	2240' FSL	1957' FEL	39.436566°	108.037344°	39.436588°	108.036714°



SGM INC.

118 W. 6th Street, Suite 200  
Glenwood Springs, Colorado 81601  
(970) 945-1004 (FAX 945-5948)  
Meeker, Colorado (970) 878-5180

Scale: 1"=1000'

Sheet 1 of 11

BAT 33A-18-07-95

Well Location Plat for Antero Resources Well BAT 33A-18-07-95

SE 1/4 SE 1/4 Sect. 18, T. 7 S., R. 95 W., 6th P.M., Garfield County, CO

Job# 2006-479.026

Date: 9.29.2010

By: reb

File: Ant.Mon.Rid\_BM