

ENCANA OIL & GAS (USA) INC. - EBUS
DO NOT MAIL-3601 N STAGECOACH RD
LONGMONT, Colorado

Aristocrat Angus 6-4-3

ENSIGN #17

Post Job Summary

Cement Surface Casing

Prepared for: Kevin Brakovec
Date Prepared: 5/19/2010
Version: 1

Service Supervisor: Lou Patterson

Submitted by: Wes Aaron

HALLIBURTON

HALLIBURTON

Service Supervisor Reports

Job Log

Date/Time	Chart #	Activity Code	Pump Rate	Cum Vol	Pump		Pressure (psig)	Comments
05/15/2010 08:30		Arrive at Location from Service Center						
05/15/2010 10:00		Pre-Rig Up Safety Meeting						
05/15/2010 10:05		Rig-Up Equipment						
05/15/2010 10:40		Pre-Job Safety Meeting						
05/15/2010 10:50		Start Job						
05/15/2010 10:51		Test Lines						3000 PSI
05/15/2010 10:52		Pump Spacer	4	20			63.0	20 BBL WATER
05/15/2010 10:56		Pump Cement	5	72.6			66.0	270 SKS 72.6 BBL SWIFTCEM @ 14.2 PPG
05/15/2010 11:14		Pump Displacement	5	47.5			300.0	RIG WATER
05/15/2010 11:28		Other	3	47.5			300.0	SPOT PLUG SHUT IN HEAD
05/15/2010 11:29		End Job						
05/15/2010 11:35		Post-Job Safety Meeting (Pre Rig-Down)						
05/15/2010 11:40		Rig-Down Equipment						
05/15/2010 12:20		Depart Location Safety Meeting						
05/15/2010 12:30		Depart Location for Service Center or Other Site						THANKS LOU AND CREW

The Road to Excellence Starts with Safety

Sold To #: 340078	Ship To #: 2784549	Quote #:	Sales Order #: 7372600
Customer: ENCANA OIL & GAS (USA) INC. - EBUS		Customer Rep:	
Well Name: Aristocrat Angus		Well #: 6-4-3	API/UWI #:
Field: WATTENBERG	City (SAP): GILCREST	County/Parish: Weld	State: Colorado
Contractor: ENSIGN		Rig/Platform Name/Num: # 17	
Job Purpose: Cement Surface Casing			
Well Type: Development Well		Job Type: Cement Surface Casing	
Sales Person: FLING, MATTHEW		Srvc Supervisor: PATTERSON, HARRY	MBU ID Emp #: 359371

Job Personnel

HES Emp Name	Exp Hrs	Emp #	HES Emp Name	Exp Hrs	Emp #	HES Emp Name	Exp Hrs	Emp #
OLSON, NICHOLAS Martin		470709	PATTERSON, HARRY Louis		359371	SIPNEFSKI, ROBERT Anthony		419391

Equipment

HES Unit #	Distance-1 way	HES Unit #	Distance-1 way	HES Unit #	Distance-1 way	HES Unit #	Distance-1 way
10248053C	30 mile	10829456	30 mile	11410470C	30 mile		

Job Hours

Date	On Location Hours	Operating Hours	Date	On Location Hours	Operating Hours	Date	On Location Hours	Operating Hours

TOTAL	Total is the sum of each column separately							
-------	--	--	--	--	--	--	--	--

Job

Formation Name									Job Times			
Formation Depth (MD)		Top			Bottom			Called Out	Date	Time	Time Zone	
Form Type					BHST				On Location	15 - May - 2010	08:30	MST
Job depth MD		794. ft			Job Depth TVD		794. ft		Job Started	15 - May - 2010	10:50	MST
Water Depth					Wk Ht Above Floor		5. ft		Job Completed	15 - May - 2010	11:28	MST
Perforation Depth (MD)		From			To			Departed Loc	15 - May - 2010	12:35	MST	

Well Data

Description	New / Used	Max pressure psig	Size in	ID in	Weight lbm/ft	Thread	Grade	Top MD ft	Bottom MD ft	Top TVD ft	Bottom TVD ft
Open Hole				12.25				.	770.		
Surface Casing	New		8.625	8.097	24.		J-55	.	770.		

Tools and Accessories

Type	Size	Qty	Make	Depth	Type	Size	Qty	Make	Depth	Type	Size	Qty	Make
Guide Shoe					Packer					Top Plug			
Float Shoe					Bridge Plug					Bottom Plug			
Float Collar					Retainer					SSR plug set			
Insert Float										Plug Container			
Stage Tool										Centralizers			

Miscellaneous Materials

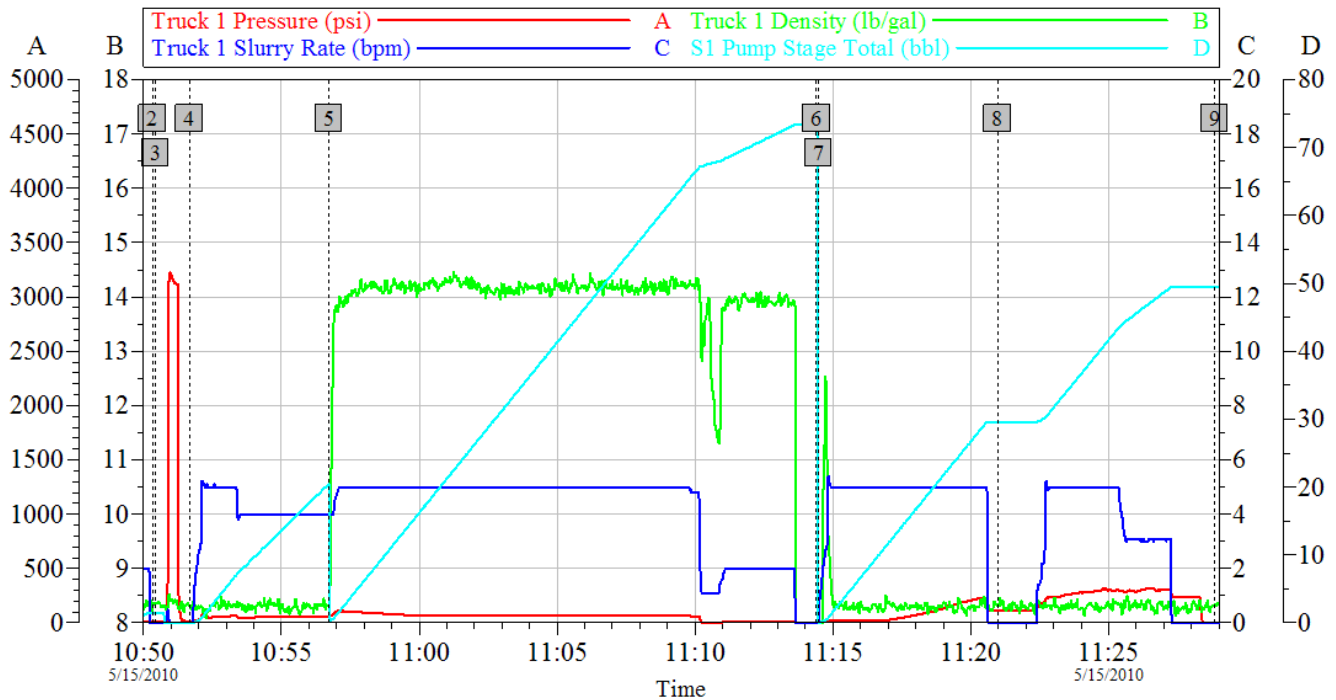
Gelling Agt	Conc	Surfactant	Conc	Acid Type	Qty	Conc	%
Treatment Fld	Conc	Inhibitor	Conc	Sand Type	Size		Qty

Fluid Data									
Stage/Plug #: 1									
Fluid #	Stage Type	Fluid Name	Qty	Qty uom	Mixing Density lbm/gal	Yield ft ³ /sk	Mix Fluid Gal/sk	Rate bbl/min	Total Mix Fluid Gal/sk
1	Water Spacer		20.00	bbl	8.33	.0	.0	5.0	
2	Lead Cement	SWIFCEM (TM) SYSTEM (452990)	270.0	sacks	14.2	1.51	7.53	5.0	7.53
	2 %	CAL-SEAL 60, 50 LB BAG (101217146)							
	2 %	ECONOLITE (100001580)							
	0.2 %	VERSASET, 55 LB SK (101376573)							
	7.53 Gal	FRESH WATER							
3	Water Displacement		48.00	bbl	8.33	.0	.0	5.0	
Calculated Values		Pressures		Volumes					
Displacement		Shut In: Instant		Lost Returns		Cement Slurry		Pad	
Top Of Cement		5 Min		Cement Returns		Actual Displacement		Treatment	
Frac Gradient		15 Min		Spacers		Load and Breakdown		Total Job	
Rates									
Circulating		Mixing		Displacement		Avg. Job			
Cement Left In Pipe	Amount	44 ft	Reason	Shoe Joint					
Frac Ring # 1 @	ID		Frac ring # 2 @	ID		Frac Ring # 3 @	ID		Frac Ring # 4 @
The Information Stated Herein Is Correct				Customer Representative Signature					

HALLIBURTON

ENCANA 5/15/10 SURFACE

ARISTOCRAT ANGUS 6-4-3



Global Event Log

2 Start Job	10:50:19	3 Test Lines	10:50:26	4 Pump Spacer 1	10:51:40
5 Pump Tail Cement	10:56:43	6 Drop Top Plug	11:14:24	7 Pump Displacement	11:14:28
8 Shutdown	11:20:58	9 End Job	11:28:50		

Customer:

Well Description:

Job Date: 15-May-2010

UWI:

Sales Order #: 7372600

OptiCem v6.4.2
15-May-10 11:38