

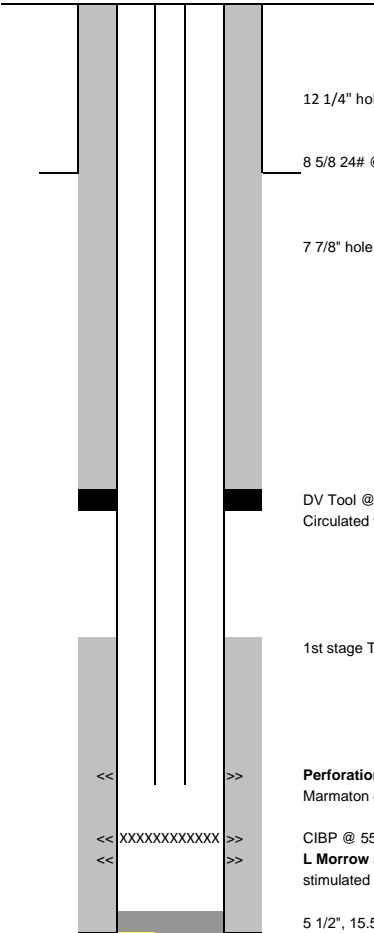
WELBORE DIAGRAM

Vecta Oil & Gas Ltd
Red Cloud 44-5
635' fsl, 891' fel, (SE SE) Sec 5, T13S-R47W
Cheyenne Colorado
05-017-07693

Directions: fr/ Kit Carson: E 4.3 mi on Hwy 40.
N 6.7 mi on CR 25. E 3MI TO CR 28-N4MI TO TRAIL W 1.5 MILES TO LOC

4/12/2010
FH

KB 4458
GL 4447
11



12 1/4" hole to 451 feet

8 5/8 24# @ 451, cement to surface

7 7/8" hole to 5760 feet

tbq detail
MU MJ w/2 7/8 bp, 1 jt, 2'perf sub,sn, 4 jts, TAC and 162 jts 2 7/8 tbq , EOT @5049, SN@5015, TAC @4890.99

rod detail
rih w 2 1/2X1 1/2X20 rwbc BTM hold down (max stroke 158") dbl valve , w 6' gas anchor, and 133 3/4 rods and 67 7/8 rods
4 & 6' 7/8 pony rods, 22' 1 1/2 pr and 12' PR liner, pump seated @5015

DV Tool @ 3323' w/ 730 sx Lite 2nd stage
Circulated to surface

1st stage TOC @ 3850

Perforations
Marmaton 4992-4997

CIBP @ 5530 w/2sx cement
L Morrow 5541-5550 4 spf
stimulated with 1000 gals 15% HCL nefe and 40 ball sealers

5 1/2", 15.5# J-55 LTC @ 5757'. Pumped 180 sx Lite, 120 sx ASC

PBTD 5530
TD MD 5760
TD TVD 5760