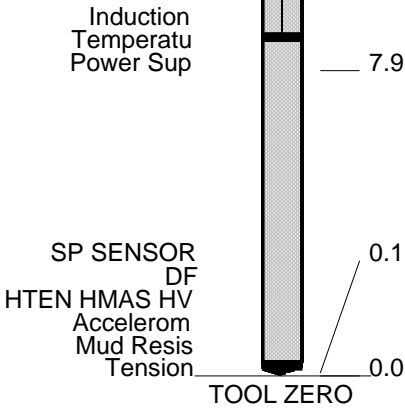


Matrix changes noted on porosity print					
Data affected by extreme hole rugosity between the depths: 3430–3390 ft, 3150–3050 ft, 2550–2490 ft, 650–550 ft.					
Rig: Black Gold 69					
Crew: Jay Musgrave, Dave Marquez					
RUN 1 SERVICE ORDER #: BE0K-00001 PROGRAM VERSION: 17C0-154 FLUID LEVEL:			RUN 2 SERVICE ORDER #: PROGRAM VERSION: FLUID LEVEL:		
LOGGED INTERVAL	START	STOP	LOGGED INTERVAL	START	STOP

EQUIPMENT DESCRIPTION					
RUN 1			RUN 2		
SURFACE EQUIPMENT WITM (DTS)-A GSR-U/Y NCT-B CNB-AB NCS-VB					
DOWNHOLE EQUIPMENT					
LEH-QT LEH-QT		43.6			
DTC-H ECH-KC DTCH0-A DTCH1-A	CTEM TelStatus ToolStatu HGNS HTEM HMCA	39.7 37.6 37.6 36.9	40.6		
HILTB-FTB HGNSD-B HMCA HGNH NLS-KL NSR-F 5068 HACCZ 452 HCNT HGR HRCC-B HRMS-B HRGD-B GLS-VJ 5416 MCFL Device HILT Nucl. LS 42767 HILT Nucl. SS 42767 HILT Nucl. BS 42767 NPV-N	HGNS Gamm HGNS Neut HGNS Neut HGNS sens	31.1 30.6 28.2	37.6		
	HRCC cart	24.2			
	MCFL HILT cali HRDD-LS HRDD-SS HRDD-BS	18.8 18.3 17.9			

AIT-M
AMIS-A 1372
AMRM-A

16.0



MAXIMUM STRING DIAMETER 4.63 IN
MEASUREMENTS RELATIVE TO TOOL ZERO
ALL LENGTHS IN FEET

Production String	(in)			(ft)	Well Schematic			(ft)			(in)	Casing String
	OD	ID	MD					MD	OD	ID		
								0.0	8.625			Casing String
								451.0	8.625			Casing Shoe
								451.0	7.875			Borehole Segment

--	--	--	--	--	--	--	--	--	--

All depths are driller's depths

Input DLIS Files						
DEFAULT	AIT_TLD_MCFL_CNL_008LUP	FN:7	PRODUCER	23-Mar-2010 13:43	5775.0 FT	401.5 FT

Output DLIS Files						
DEFAULT	AIT_TLD_MCFL_CNL_017PUP	FN:16	PRODUCER	23-Mar-2010 15:04	5775.0 FT	401.5 FT

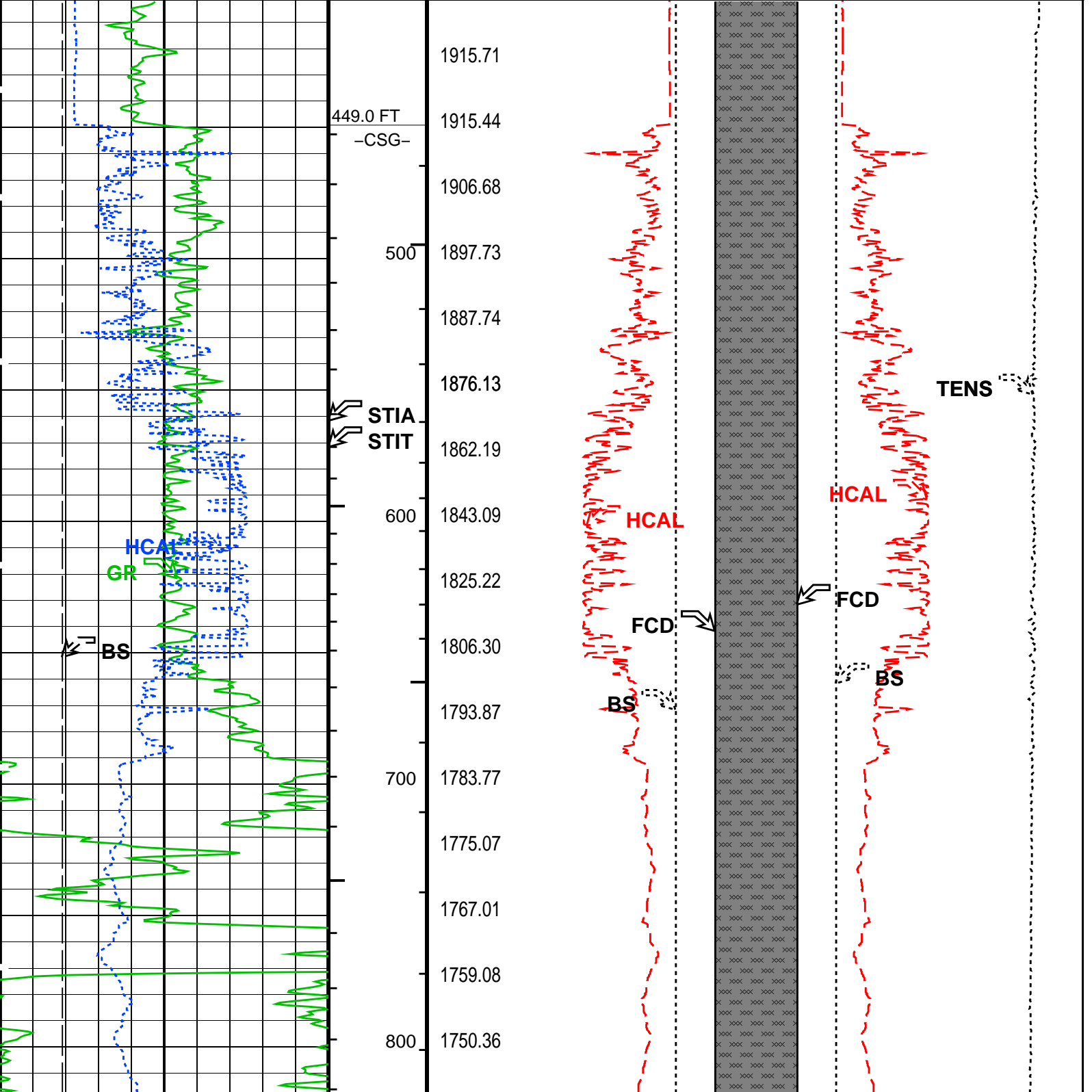
Integrated Hole/Cement Volume Summary						
Hole Volume = 2791.86 F3						
Cement Volume = 1915.71 F3 (assuming 5.50 IN casing O.D.)						
Computed from 5759.0 FT to 449.0 FT using data channel(s) HCAL						

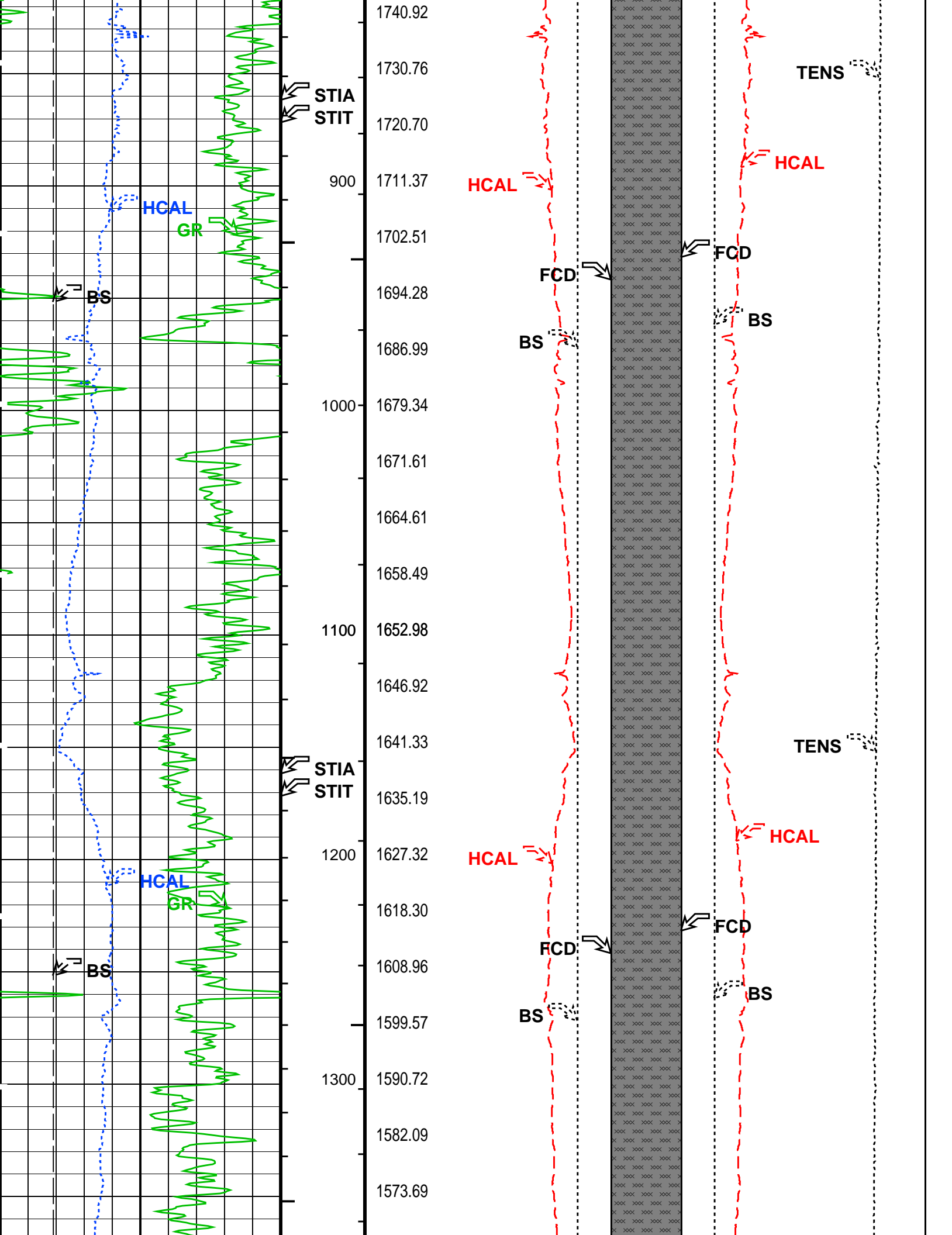
OP System Version: 17C0-154						
AIT-M	17C0-154		HILTB-FTB	17C0-154		
DTC-H	17C0-154					

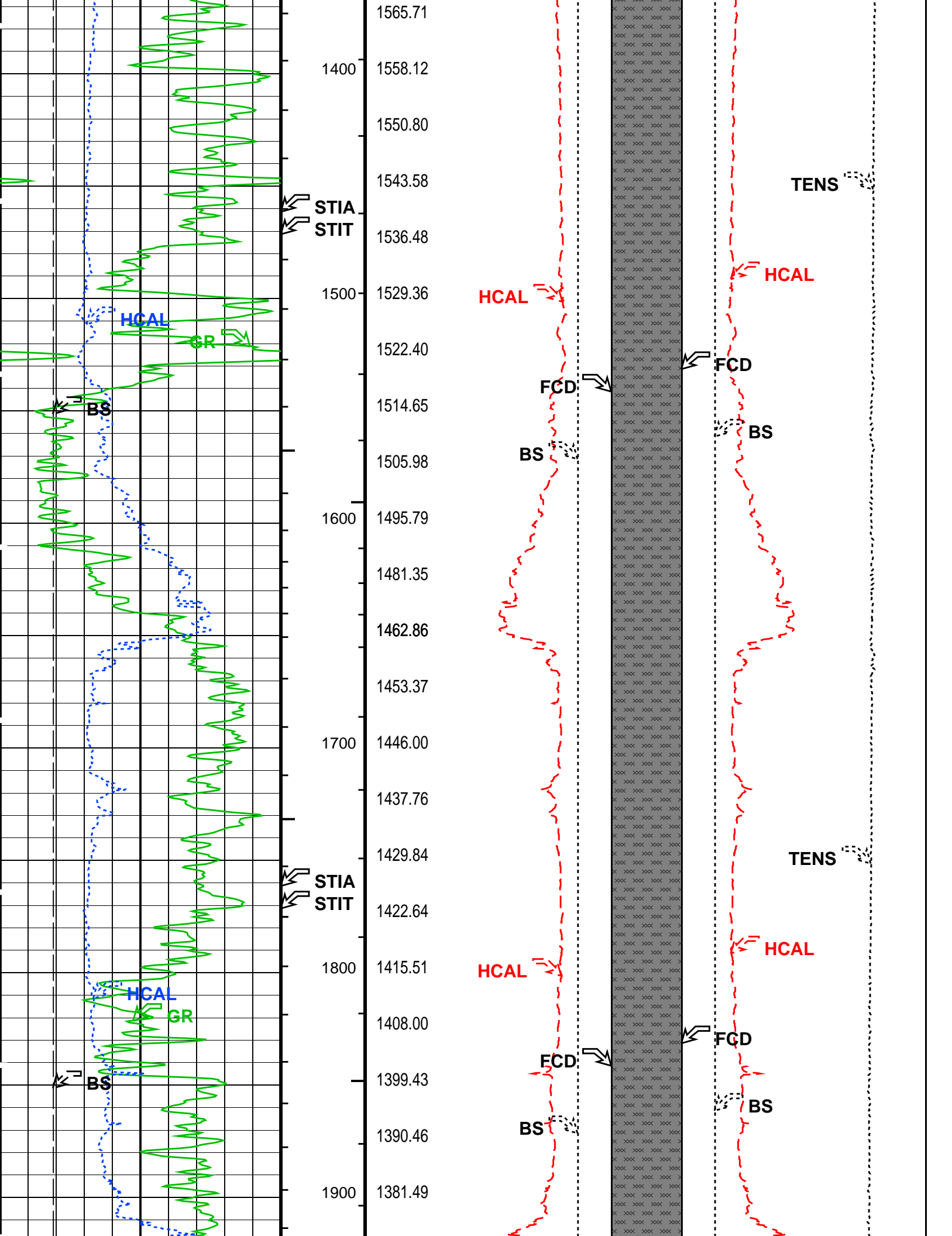
PIP SUMMARY						
└ Integrated Hole Volume Minor Pip Every 10 F3						
└ Integrated Hole Volume Major Pip Every 100 F3						
└ Integrated Cement Volume Minor Pip Every 10 F3						
└ Integrated Cement Volume Major Pip Every 100 F3						
Time Mark Every 60 S						

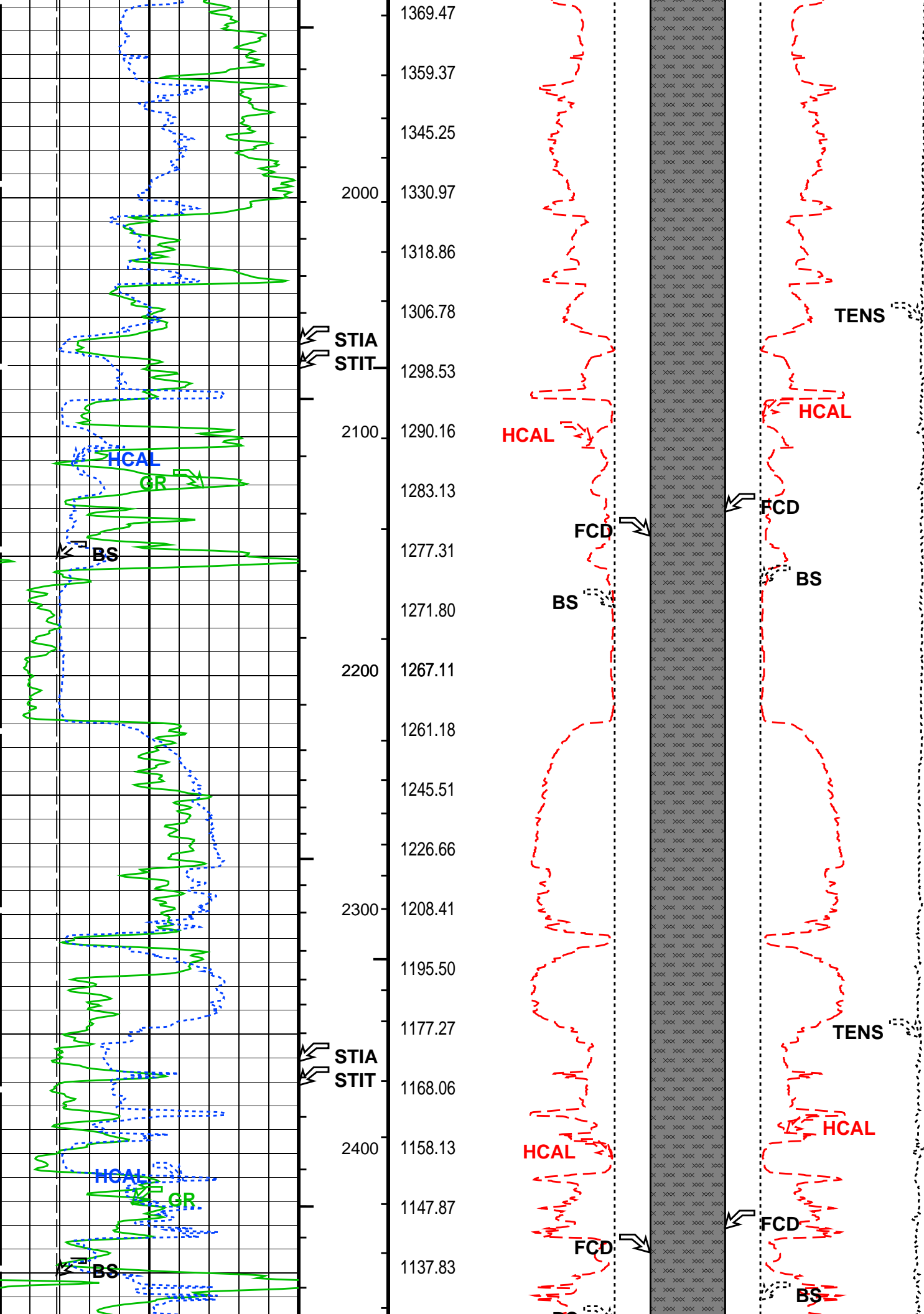
			FCD2 - FCD3 From FCD2 to FCD3			
Cement Volume			Tension (TENS)			

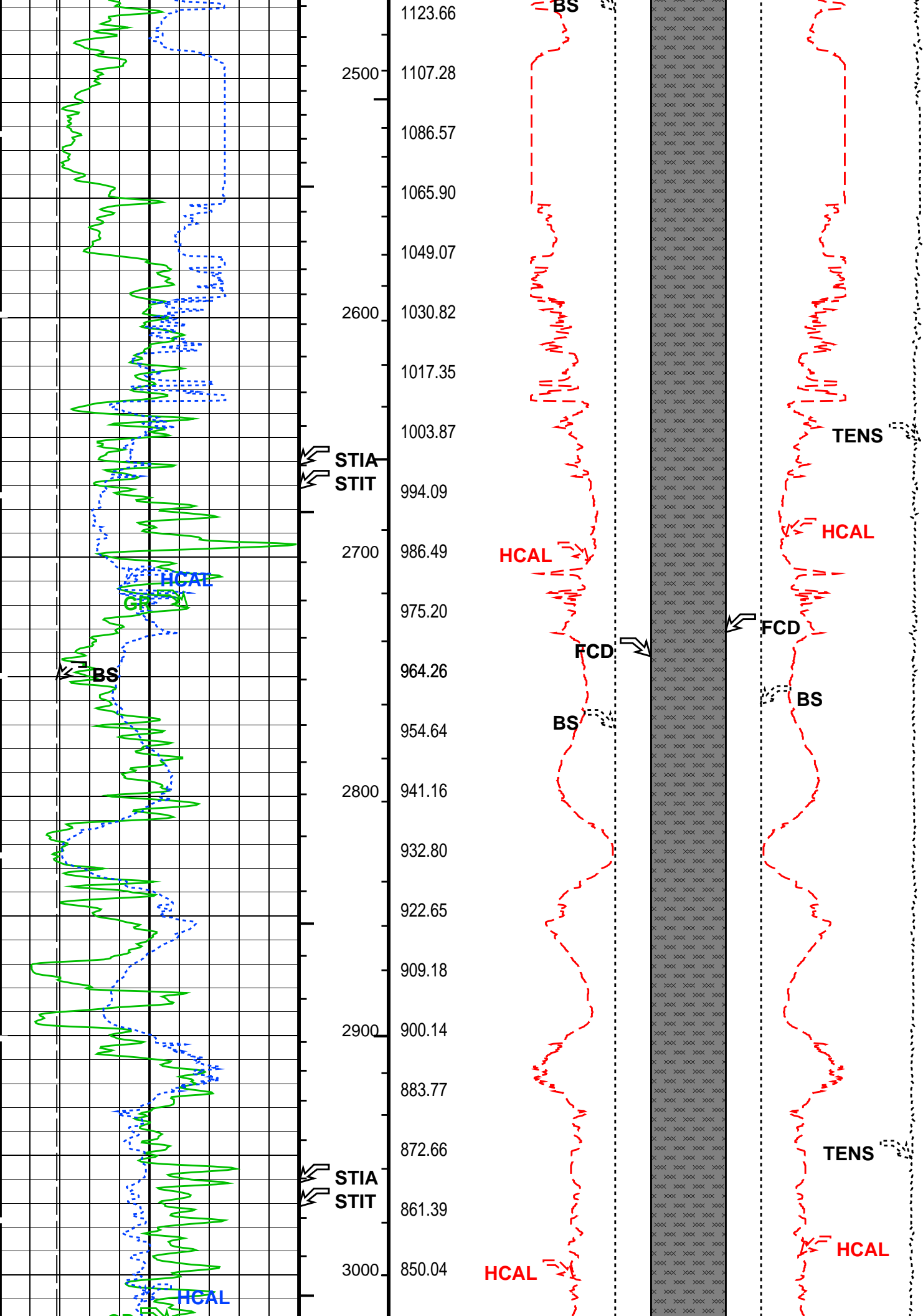
		Cement Volume (ICV) (F3)		6000 (LBF)		0
HILT Caliper (HCAL) (IN) 6-----16		Tool/Tot. Drag From D3T to STIA 23	HILT Caliper (HCAL) (IN) -----3 3		HILT Caliper (HCAL) (IN) -----23	
Gamma Ray (GR) (GAPI) 0-----150		Cable Drag From STIA to STIT 23	FCD2 (FCD) (IN) -----3 3		FCD3 (FCD) (IN) -----23	
Bit Size (BS) (IN) 6-----16		Stuck Stretch (STIT) (F) 50 0	Bit Size (BS) (IN) -----3 3		Bit Size (BS) (IN) -----23	

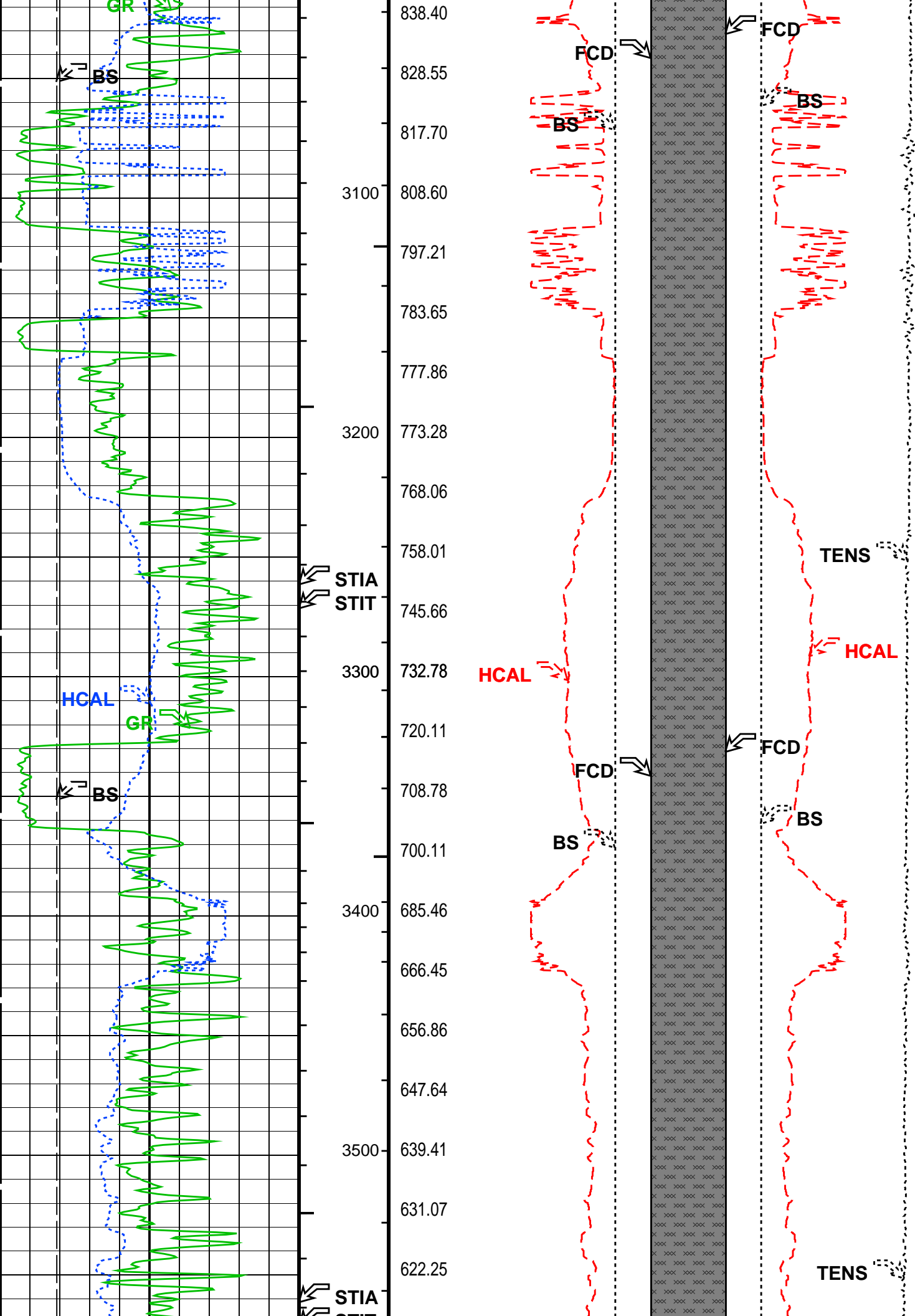


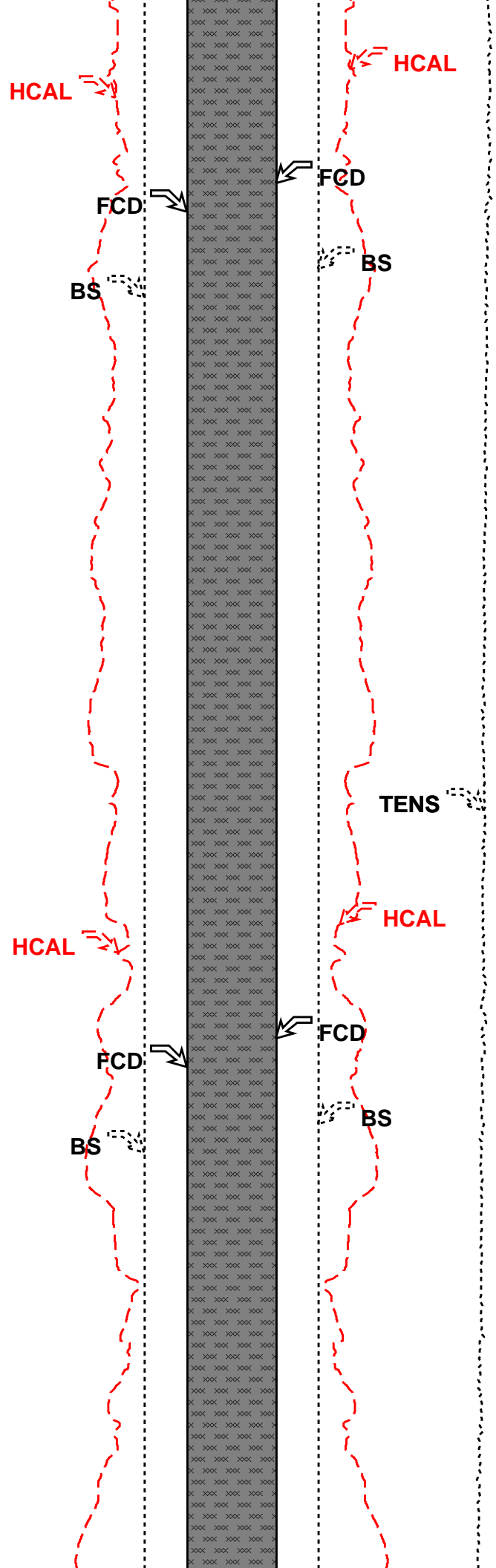
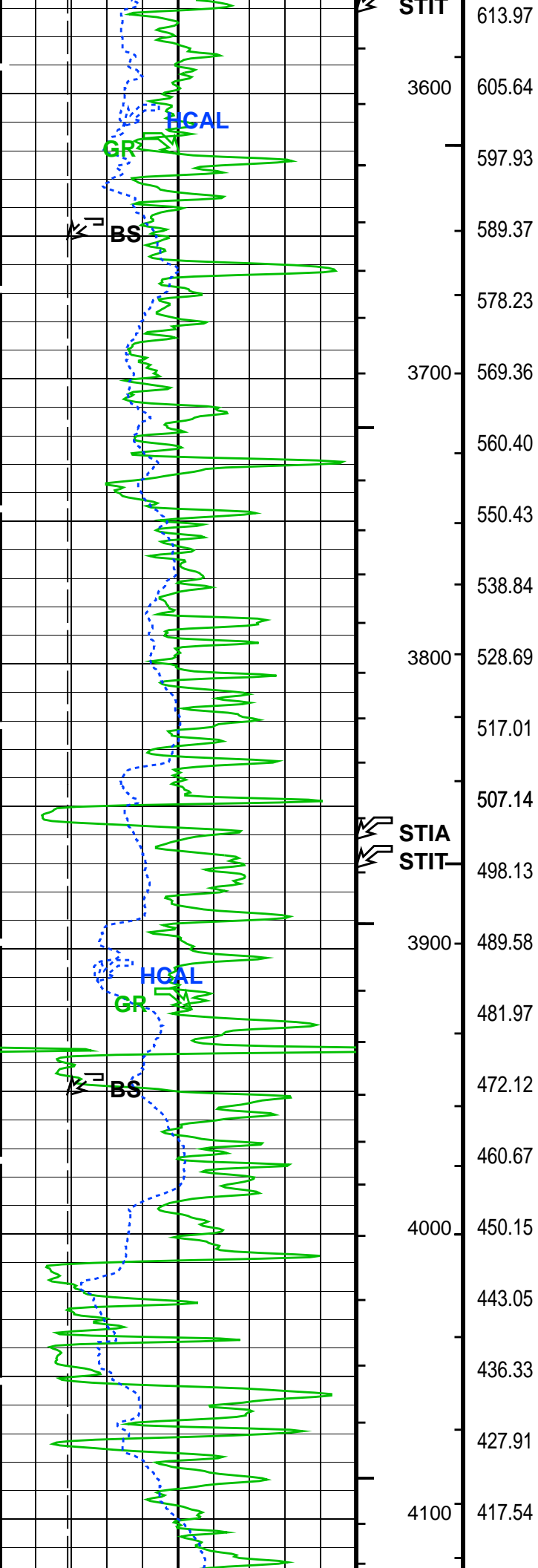


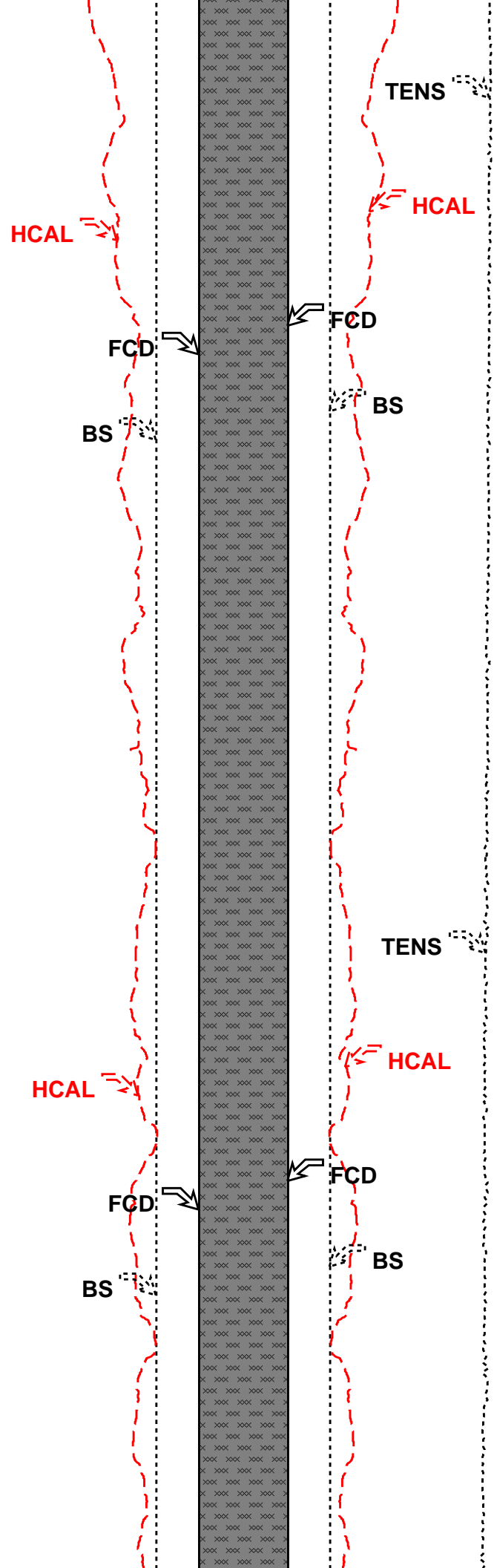
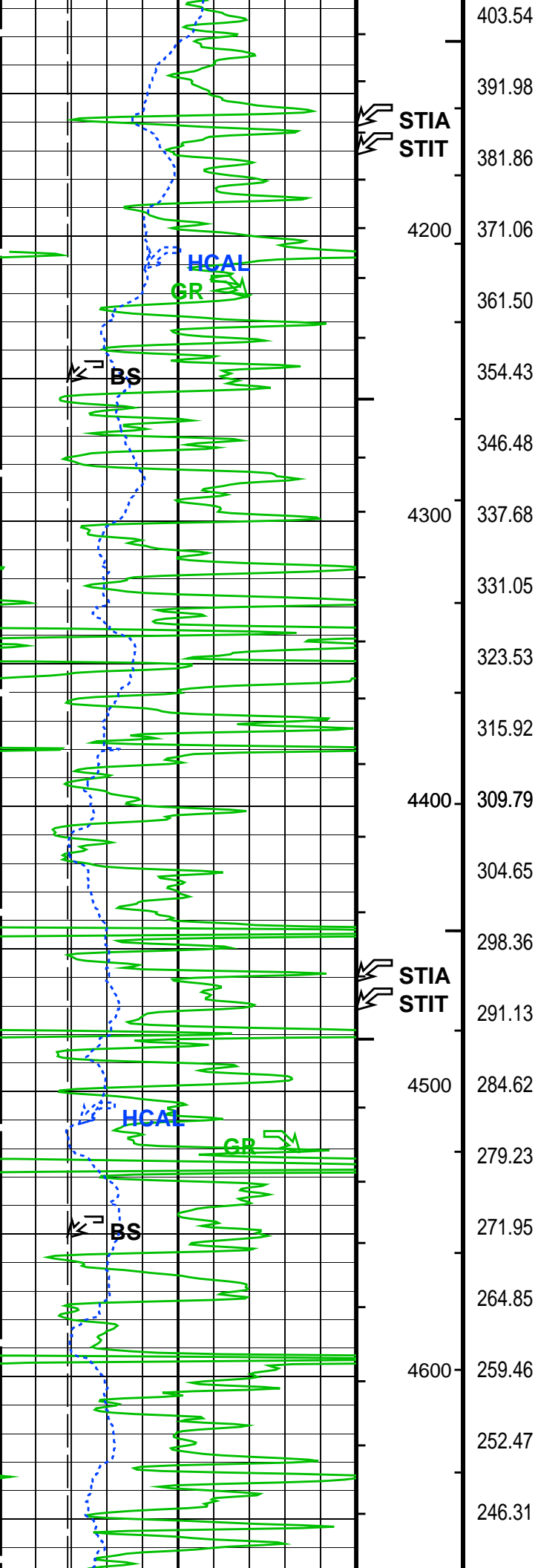


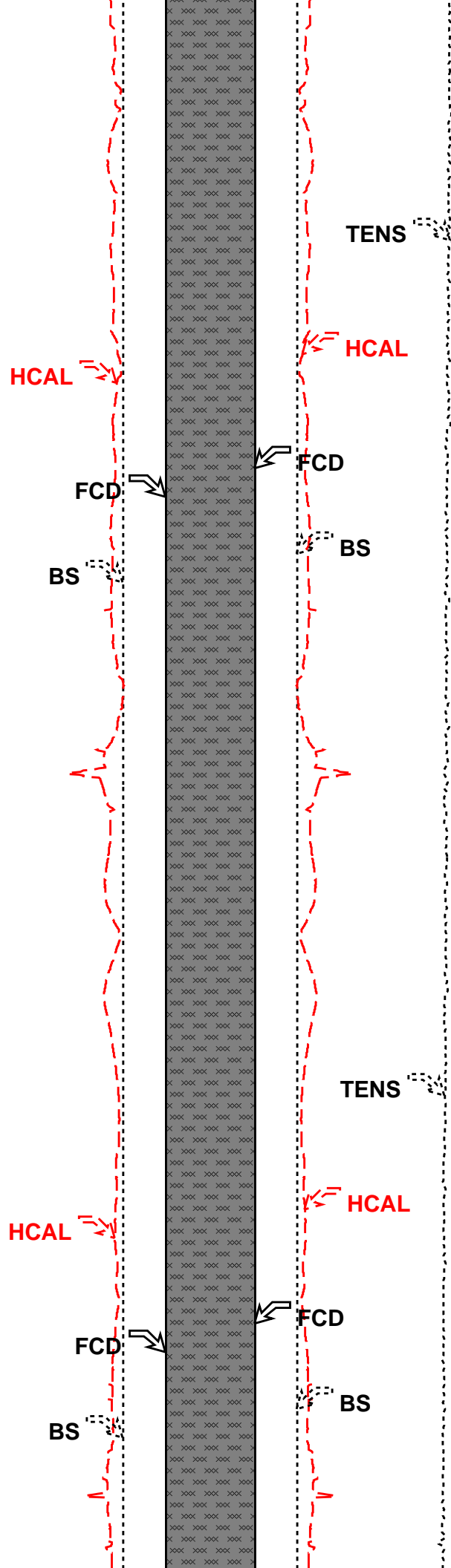
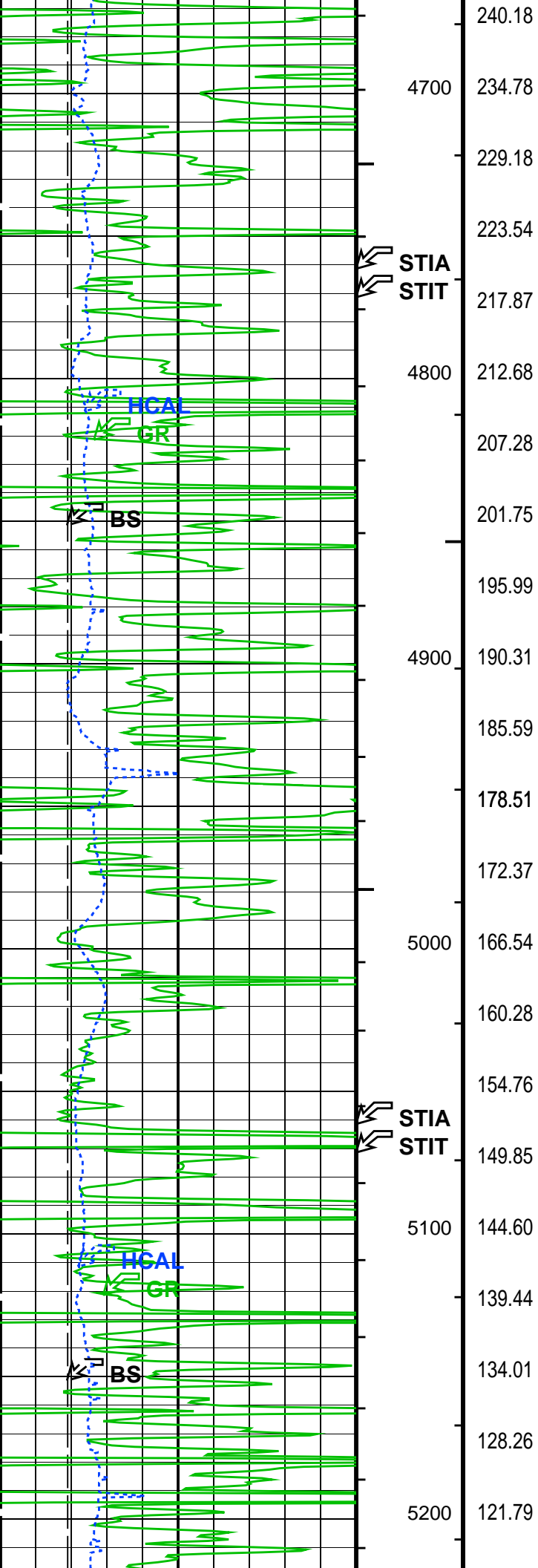












State: **Colorado**

Platform Express

Cement Volume

Caliper