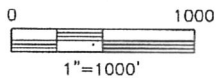
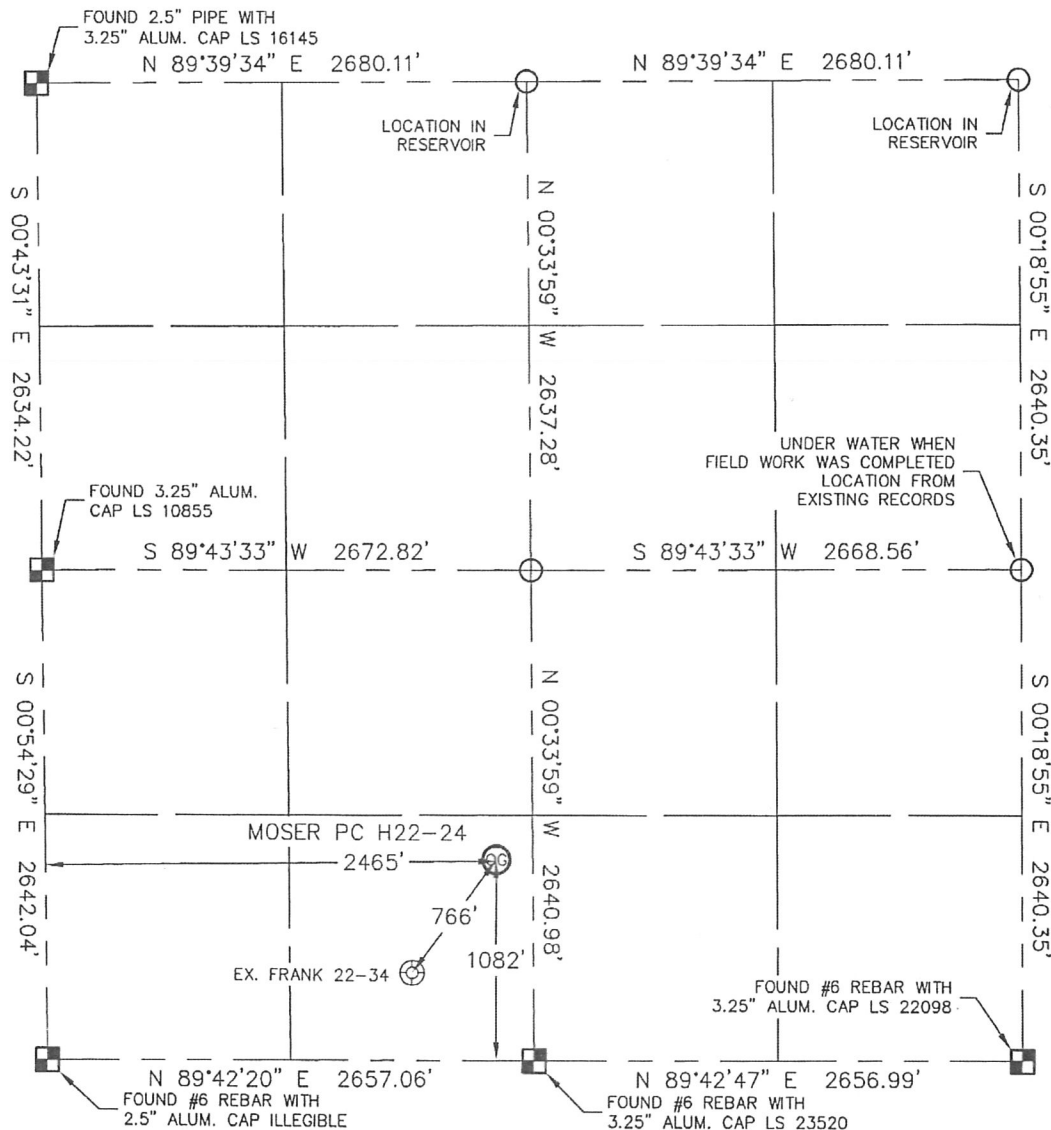


WELL LOCATION CERTIFICATE

THIS MAP DOES NOT REPRESENT A BOUNDARY SURVEY

SECTION: 22
TOWNSHIP: 3N
RANGE: 65W



In accordance with a request from JOE JOHNSON with Noble Energy Inc., Lat40°, LLC has determined the surface location of the MOSER PC H22-24 to be 1082' from the SOUTH line and 2465' from the WEST line as measured at right angles from the section lines of Section 22, Township 3 North, Range 65 West of the Sixth Principal Meridian, County of Weld, State of Colorado.

I hereby state that this Well Location Certificate was prepared by me, or under my direct supervision, that the fieldwork was completed on 6/22/10, for and on behalf of Noble Energy Inc.. That this is not a Land Survey Plat or an Improvement Survey Plat, and that it is not to be relied upon for establishment of fence, building, or other future improvement lines.

NOTE:

- 1) Bearings shown are Grid Bearings of the Colorado State Plane Coordinate System, North Zone, North American Datum 1983/2007. The lineal dimensions as contained herein are based upon the "U.S. Survey Foot."
- 2) Ground elevations are based on an observed GPS elevation (NAVD 1988 DATUM).
- 3) NEAREST EXISTING WELL: FRANK 22-34 766'
- 4) IMPROVEMENTS: See VISIBLE IMPROVEMENTS exhibit for all visible improvements within 400' of disturbed area.
- 5) SURFACE USE: IRRIGATED CROP FIELD

SURFACE LOCATION

LATITUDE: 40.20663°N
LONGITUDE: 104.65047°W
PDOP: 2.0
ELEV: 4808
1/4, 1/4: SE1/4SW1/4
NEAREST PROPERTY LINE: ±155' NORTHEAST



NOTE

According to Colorado law, you must commence any legal action based upon any defect in this W.L.C. within three years after you discover such defect. In no event, may any action based upon any defect in this survey be commenced more than ten years after the date of the certificate shown hereon. (13-80-105 C.R.S.)

LEGEND

- = ALIQUOT MONUMENT AS DESCRIBED
- = CALCULATED POSITION

Brian T. Brinkman—On behalf of Lat40°, LLC
Colorado Licensed Professional
Land Surveyor No. 38175

PROJECT#: 2010041

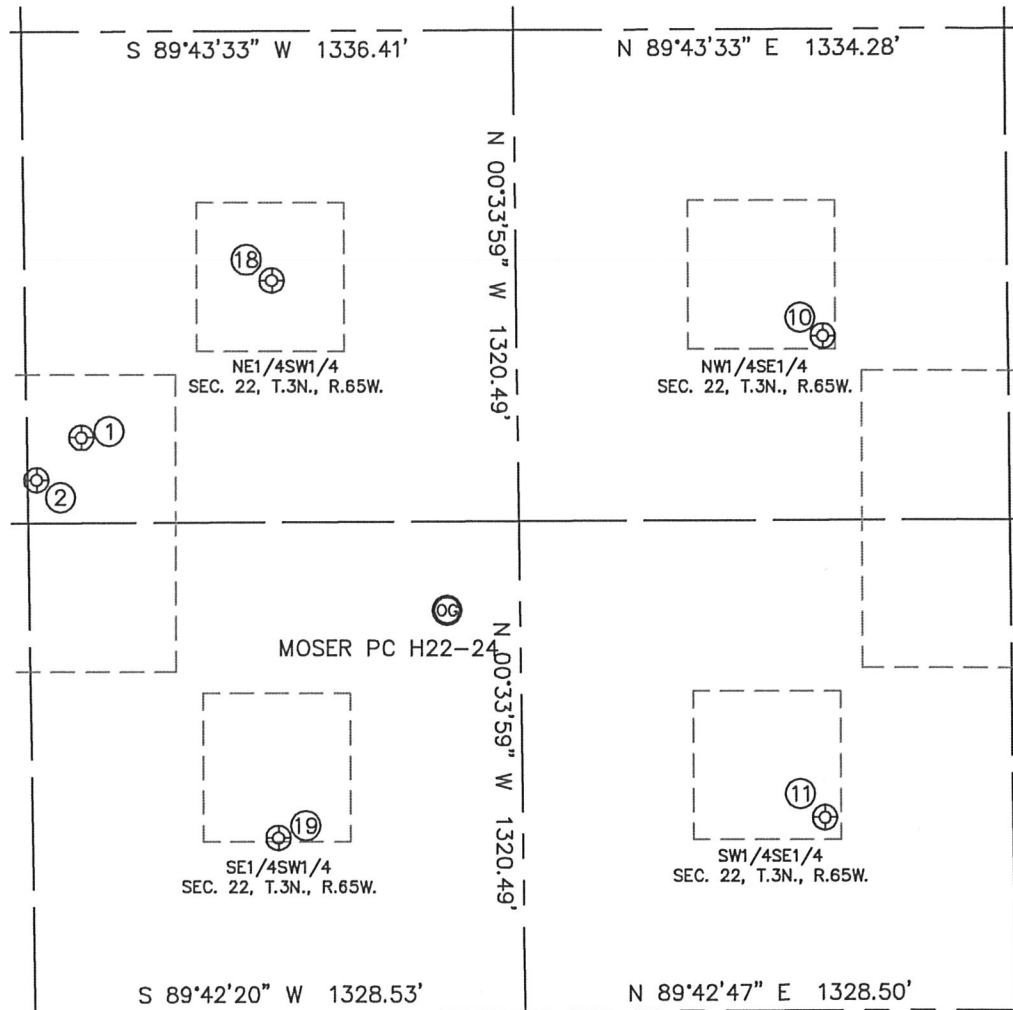
Lat40°, LLC

1635 Foxtrail Drive, Suite 325

Loveland, CO 80538

SITE SKETCH

SECTION: 22
TOWNSHIP: 3N
RANGE: 65W



- | | | | | | |
|--|---|---|---|---|--|
| ①
WARDELL GERALD J GU #1
NE1/4SW1/4
1551' FSL
1481' FWL
LAT-40.20793°N
LONG-104.65400°W
PDOP: 1.7
ELEV: 4807 | ②
MOSER 22-35
NE1/4SW1/4
1437' FSL
1357' FWL
LAT-40.20762°N
LONG-104.65444°W
PDOP: 1.2
ELEV: 4807 | ⑩
HSR-DODGE 10-22
NW1/4SE1/4
1815' FSL
1834' FEL
LAT-40.20863°N
LONG-104.64679°W
PDOP: 2.1
ELEV: 4808 | ⑪
HSR-DOVE 15-22
SW1/4SE1/4
519' FSL
1839' FEL
LAT-40.20507°N
LONG-104.64682°W
PDOP: 2.2
ELEV: 4809 | ⑮
GOODHARD 22-1
NE1/4SW1/4
1970' FSL
2005' FWL
LAT-40.20908°N
LONG-104.65214°W
PDOP: 1.2
ELEV: 4805 | ⑲
FRANK 22-34
SE1/4SW1/4
471' FSL
1996' FWL
LAT-40.20496°N
LONG-104.65213°W
PDOP: 3.6
ELEV: 4809 |
|--|---|---|---|---|--|

