

DALEY LAND SURVEYING, INC.

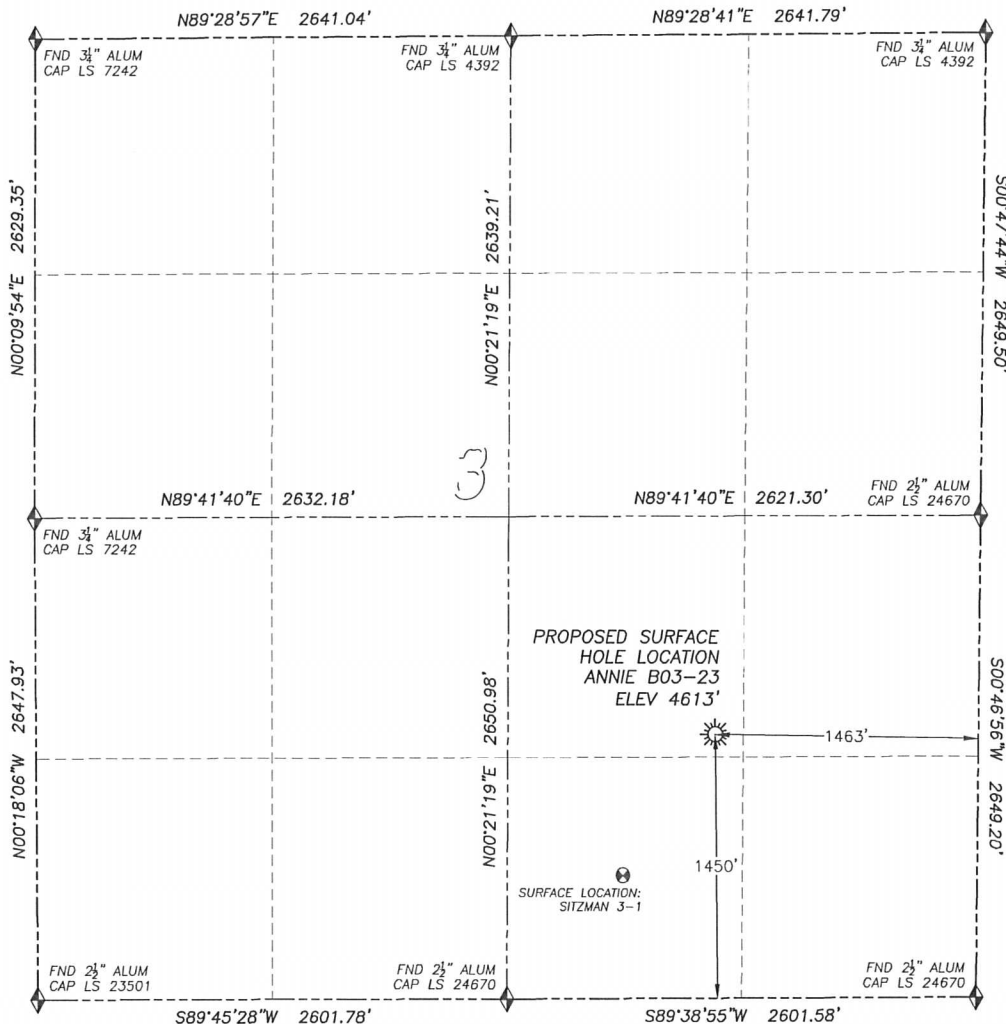
PARKER, CO. 80134

303 953 9841

WELL LOCATION CERTIFICATE

ANNIE B03-23

SECTION 3, TOWNSHIP 5 NORTH, RANGE 64 WEST OF THE 6TH PRINCIPAL MERIDIAN



- LEGEND**
- FOUND MONUMENT AS DESCRIBED
 - PROPOSED WELL
 - EXISTING WELL
 - BOTTOM HOLE
 - ABANDONED WELL

NAD 83 LATITUDE AND LONGITUDE

ANNIE B03-23 SURFACE HOLE:

LATITUDE: N40.42503°
 LONGITUDE: W104.53222°
 ELEVATION: 4613'
 FOOTAGE: 1450' FSL, 1463' FEL
 PDOP: 1.3
 QTR/QTR: NW4/SE4
 PROP LINE: 157' EAST

NEAREST EXISTING WELL:

SITZMAN 3-1 SURFACE HOLE
 LATITUDE: N40.42289°
 LONGITUDE: W104.53406°
 ELEVATION: 4610'
 933' SOUTHWEST

IN ACCORDANCE WITH A REQUEST FROM JOE JOHNSON OF NOBLE ENERGY INC., DALEY LAND SURVEYING, INC. HAS DETERMINED THE SURFACE LOCATION OF THE ANNIE B03-23 WELL TO BE 1450' FSL, 1463' FEL, AS MEASURED AT NINETY (90) DEGREES FROM THE SECTION LINES OF SECTION 3, TOWNSHIP 5 NORTH, RANGE 64 WEST OF THE 6TH PRINCIPAL MERIDIAN, WELD COUNTY, COLORADO.

I HEREBY CERTIFY THAT THIS WELL LOCATION CERTIFICATE WAS PREPARED BY ME OR UNDER MY DIRECT SUPERVISION, THAT THE WORK WAS COMPLETED ON 9/22/2010 FOR AND ON BEHALF OF NOBLE ENERGY, INC., AND THAT THIS MAP DOES NOT REPRESENT A BOUNDARY SURVEY, IT IS NOT A LAND SURVEY PLAT OR AN IMPROVEMENT SURVEY PLAT AND IT IS NOT TO BE RELIED UPON FOR THE ESTABLISHMENT OF FENCE, BUILDING OR OTHER FUTURE IMPROVEMENT LINES.

NOTES:

- 1) BEARINGS FOR THIS MAP ARE ASSUMED AND BASED UPON GPS OBSERVATIONS MADE BETWEEN MONUMENTS LOCATED AT THE SOUTHEAST CORNER AND EAST QUARTER CORNER OF SECTION 3, T.5N., R.64W.
- 2) HORIZONTAL DATUM IS NAD83.
- 3) VERTICAL DATUM IS NAVD88. ELEVATIONS ARE DERIVED FROM GPS OBSERVATIONS PROCESSED THROUGH OPUS, UTILIZING THE GEOID03 MODEL.
- 4) SEE LOCATION DRAWING FOR VISIBLE IMPROVEMENTS WITHIN 600' OF PROPOSED SURFACE HOLE LOCATION.
- 5) SURFACE USE: AGRICULTURAL.

NOTICE: According to Colorado law you MUST commence any legal action based upon any defect in this W.L.C. within three years after you first discover such defect. In no event may any action based upon any such defect in this W.L.C. be commenced more than ten years from the date of the certification shown herein.



FOR AND ON BEHALF OF
 DALEY LAND SURVEYING INC.,
 Robert Daley, PLS 35597

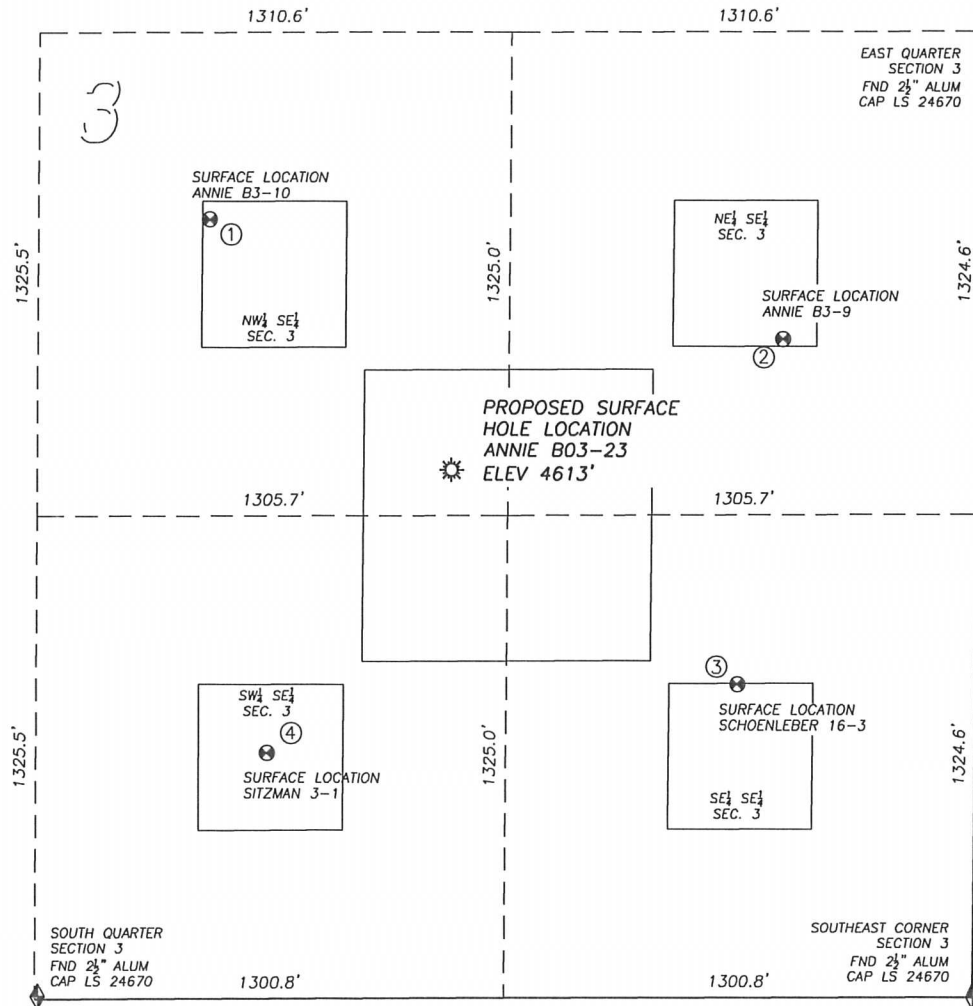
DALEY LAND SURVEYING, INC.

PARKER, CO. 80134

303 953 9841

SITE SKETCH ANNIE B03-23

SECTION 3, TOWNSHIP 5 NORTH, RANGE 64 WEST OF THE 6TH PRINCIPAL MERIDIAN



①

ANNIE B3-10
NW/SE SEC. 3
2138' FSL, 2144' FEL
959' NW OF PROPOSED
SURFACE HOLE LOCATION
LAT. N40.42691'
LONG. W104.53463'
EL: 4618'
PDOP 1.9

②

ANNIE B3-9
NE/SE SEC. 3
1806' FSL, 547' FEL
989' NE OF PROPOSED
SURFACE HOLE LOCATION
LAT. N40.42602'
LONG. W104.52891'
EL: 4613'
PDOP 2.3

③

SCHOENLEBER 16-3
SE/SE SEC. 3
860' FSL, 662' FEL
985' SE OF PROPOSED
SURFACE HOLE LOCATION
LAT. N40.42342'
LONG. W104.52937'
EL: 4607'
PDOP 1.9

④

SITZMAN 3-1
SW/SE SEC. 3
675' FSL, 1966' FEL
933' SW OF PROPOSED
SURFACE HOLE LOCATION
LAT. N40.42289'
LONG. W104.53406'
EL: 4610'
PDOP 1.8

NOTES:

- 1) THIS DOES NOT REPRESENT A BOUNDARY SURVEY
- 2) THE LATITUDES AND LONGITUDES SHOWN ARE REFERENCED TO NAD83
- 3) DATUM FOR ELEVATION IS NAVD88. ELEVATIONS ARE DERIVED FROM GPS-RTK OBSERVATIONS PROCESSED THROUGH OPUS, UTILIZING THE GEOID03 MODEL.