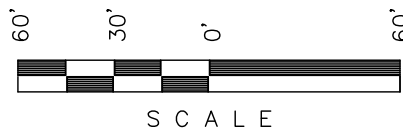


Encana OIL & GAS (USA) INC.

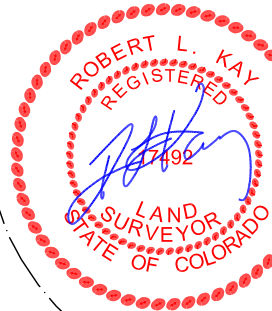
ADDENDUM TO LEGAL PLAT FOR

WELL PAD F17 595
SECTION 17, T5S, R95W, 6th P.M.
SE 1/4 NW 1/4

SCALE: 1" = 60'
DATE: 09-28-10
DRAWN BY: D.R.B.
Revised: 10-18-10 D.R.B.
Revised: 10-21-10 D.R.B.

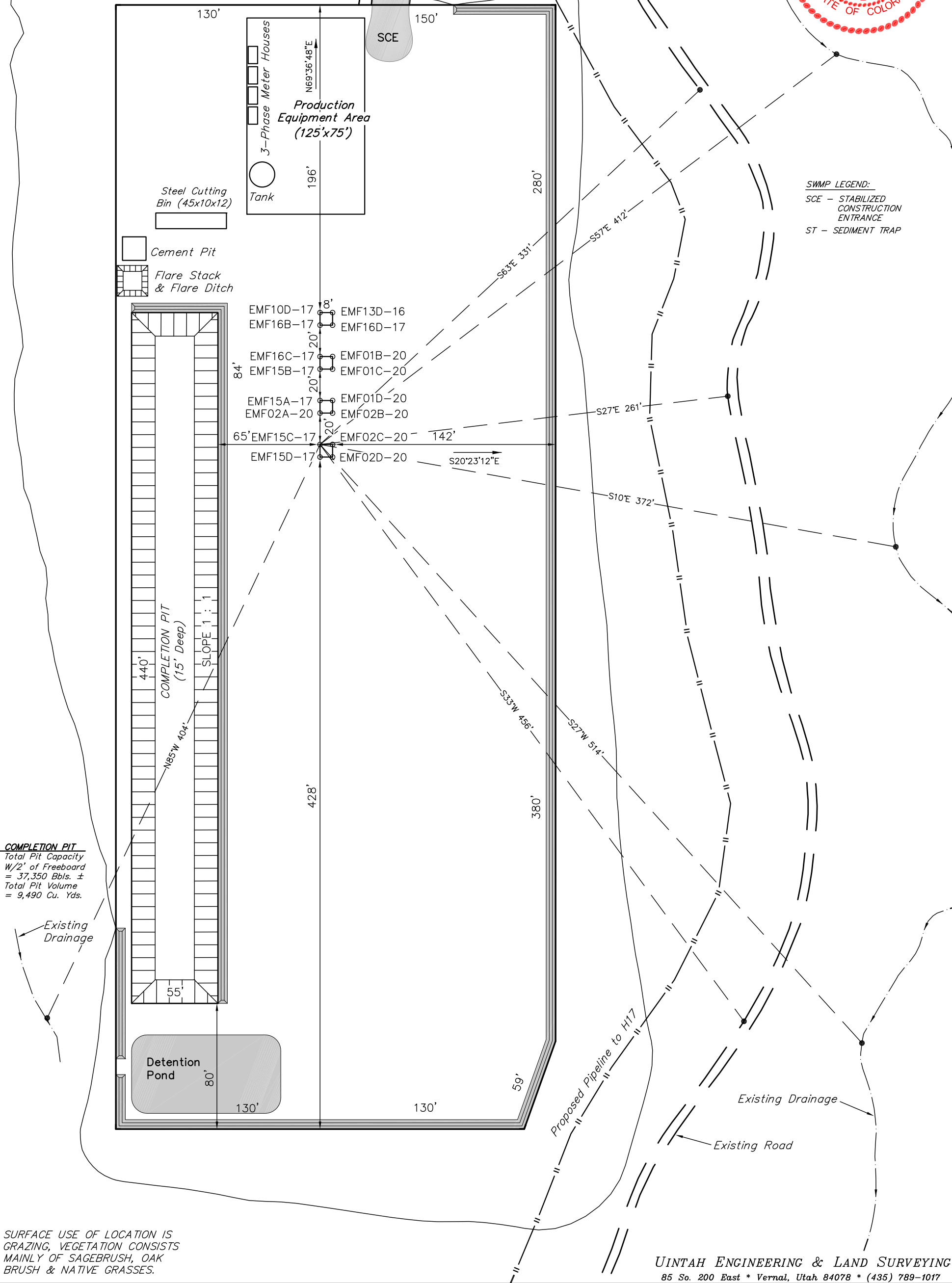


Sheet 1y of 11



SWMP LEGEND:

SCE - STABILIZED
CONSTRUCTION
ENTRANCE
ST - SEDIMENT TRAP



COMPLETION PIT
Total Pit Capacity
W/2' of Freeboard
= 37,350 Bbls. ±
Total Pit Volume
= 9,490 Cu. Yds.

SURFACE USE OF LOCATION IS
GRAZING, VEGETATION CONSISTS
MAINLY OF SAGEBRUSH, OAK
BRUSH & NATIVE GRASSES.

Encana OIL & GAS (USA) INC.

WELL PAD INTERFERENCE PLAT

WELL PAD F17 595
SECTION 17, T5S, R95W, 6th P.M.
SE 1/4 NW 1/4

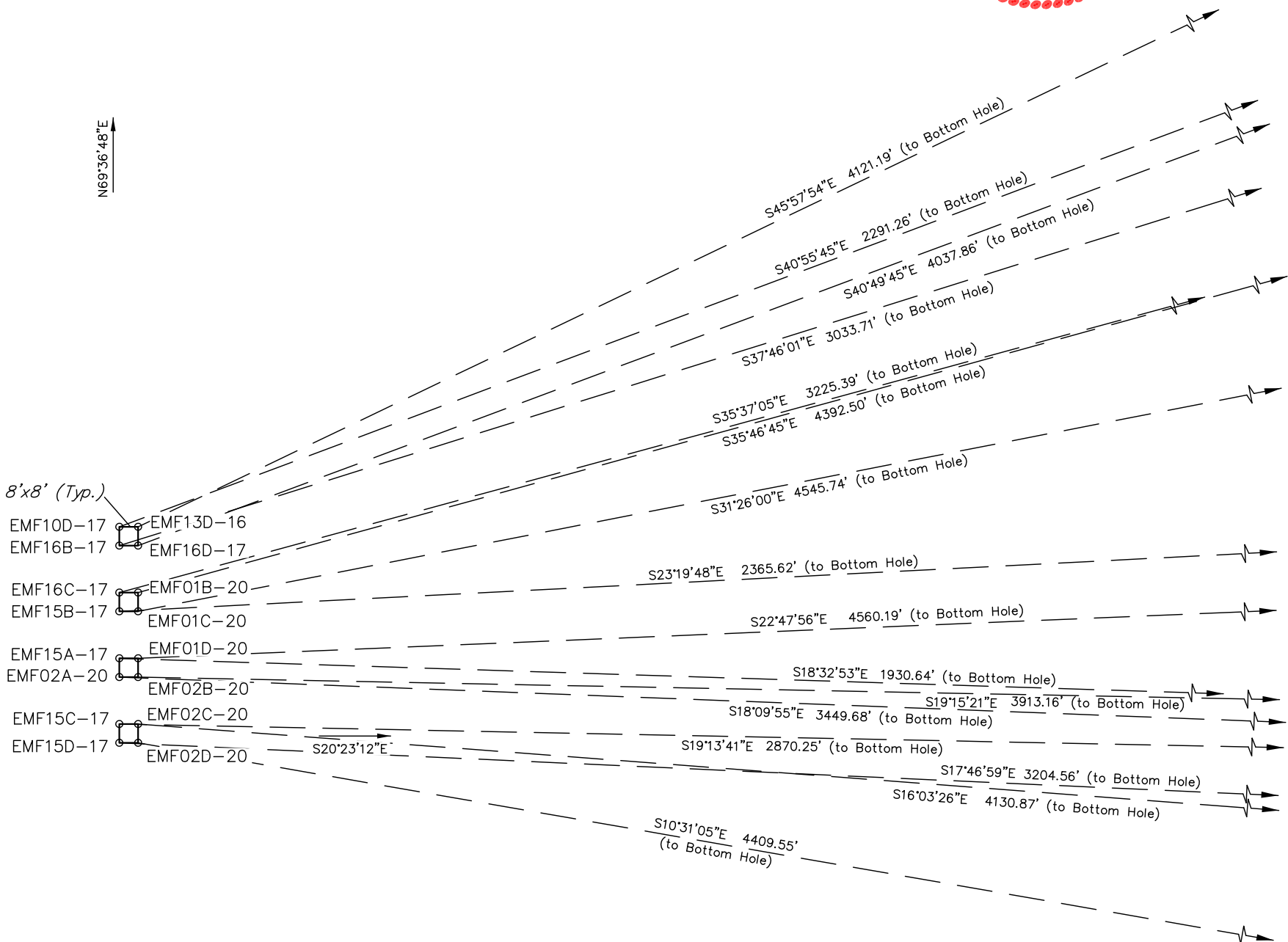
60 30 0 30 60



S C A L E

Sheet 2 of 11

SCALE: 1" = 60'
DATE: 09-28-10
DRAWN BY: D.R.B.
Revised: 10-18-10 D.R.B.

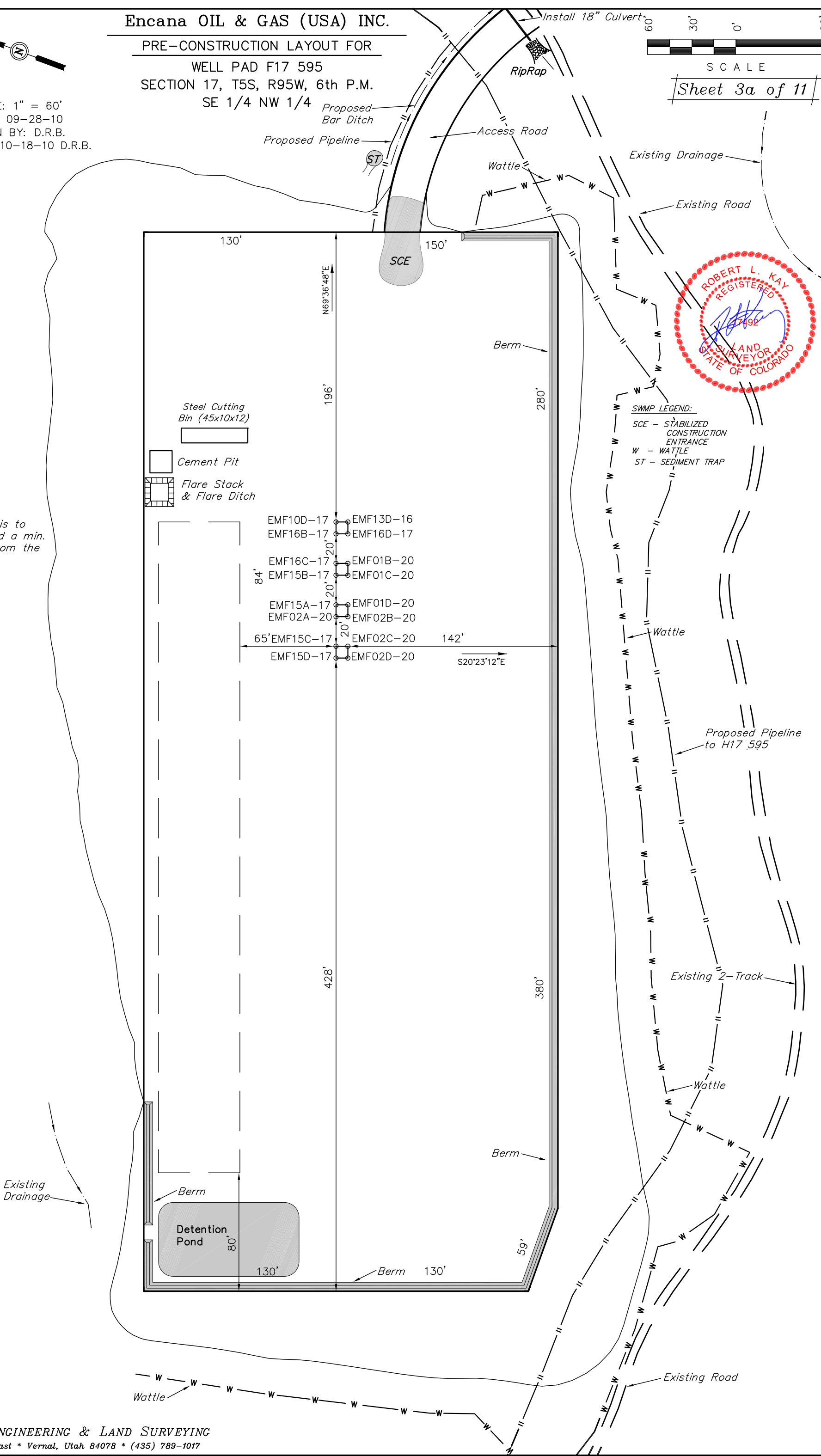
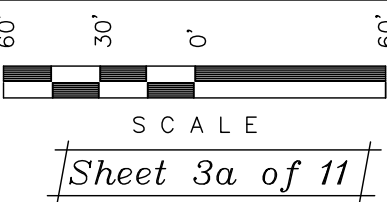


Encana OIL & GAS (USA) INC.

PRE-CONSTRUCTION LAYOUT FOR

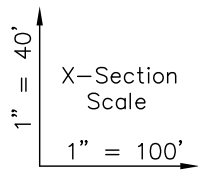
WELL PAD F17 595
SECTION 17, T5S, R95W, 6th P.M.
SE 1/4 NW 1/4

SCALE: 1" = 60'
DATE: 09-28-10
DRAWN BY: D.R.B.
Revised: 10-18-10 D.R.B.



SWMP LEGEND:
SCE - STABILIZED CONSTRUCTION ENTRANCE
W - WATTLE
ST - SEDIMENT TRAP

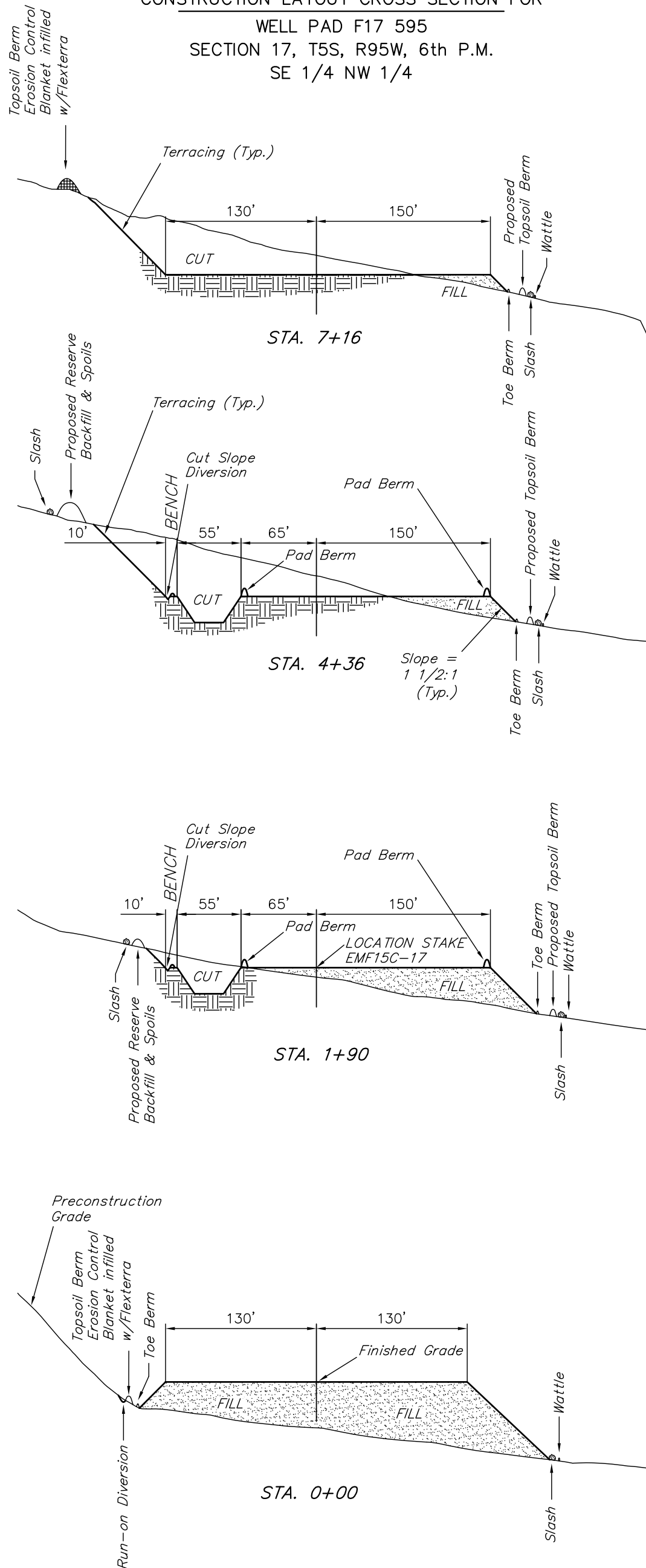
NOTE:
Flare Pit is to be located a min. of 100' from the Well Head.



DATE: 10-01-10
DRAWN BY: D.R.B.

Encana OIL & GAS (USA) INC.
CONSTRUCTION LAYOUT CROSS SECTION FOR
WELL PAD F17 595
SECTION 17, T5S, R95W, 6th P.M.
SE 1/4 NW 1/4

Sheet 4 of 11



NOTE:
Topsoil should not be Stripped Below Finished Grade on Substructure Area.

* NOTE:
FILL QUANTITY INCLUDES 5% FOR COMPACTION

* NOTE:
NO EXCESS MATERIAL WAS CALCULATED FOR PIT BACKFILL.

APPROXIMATE YARDAGES

(6") Topsoil Stripping = 5,130 Cu. Yds.
Remaining Location = 72,820 Cu. Yds.

TOTAL CUT = 77,950 CU.YDS.
FILL = 72,820 CU.YDS.

EXCESS MATERIAL = 5,130 Cu. Yds.
Topsoil = 5,130 Cu. Yds.

EXCESS UNBALANCE = 0 Cu. Yds.
(After Interim Rehabilitation)

UINTAH ENGINEERING & LAND SURVEYING
85 So. 200 East * Vernal, Utah 84078 * (435) 789-1017

SCALE: 1" = 60'
DATE: 09-29-10
DRAWN BY: D.R.B.
Revised: 10-18-10 D.R.B.
Revised: 10-21-10 D.R.B.

A horizontal scale bar with alternating black and white segments. Above the bar, the markings 60', 30', 0', and 30' are shown from left to right. Below the bar, the word "SCALE" is centered.

NOTE:
Compact in 6" lifts
and seed ECB infilled
with Flexterra.

0.07 Ac. to Sed. Res. #3
3,600 cu.ft./Ac. Drainage
Vol. = 252 cu.ft.
L = 20', W = 8', D = 4'

NOTE:
Wattle to be installed
25' downhill of slash
and topsoil stockpile.

NOTE:
Existing 2-track
to be upgraded.


LEGEND:
ST - Septic Tank
G - Generator
WT - Water Tank

Approx. /
Toe of /
Fill Slope

NOTE: Flare Pit is to be located a min. of 100' from the Well Head.

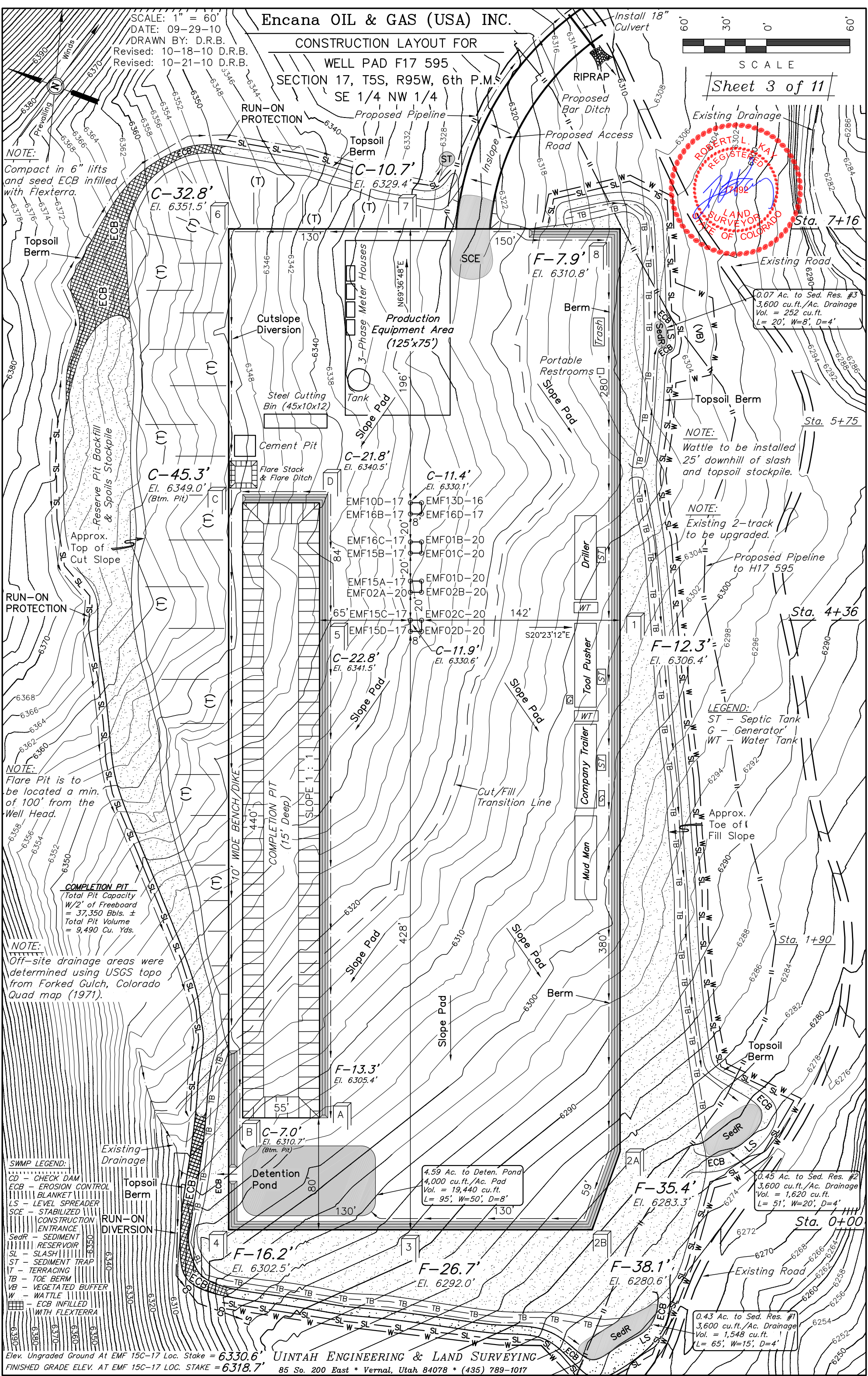
COMPLETION PIT
 Total Pit Capacity
 W/2' of Freeboard
 = 37,350 Bbls. ±
 Total Pit Volume
 = 9,490 Cu. Yds.

NOTE:
Off-site drainage areas were determined using USGS topo from Forked Gulch, Colorado Quad map (1971).

SWMP LEGEND:		
CD	- CHECK DAM	
ECB	- EROSION CONTROL	
	BLANKET	
LS	- LEVEL SPREADER	
SCE	- STABILIZED	
	CONSTRUCTION	
	ENTRANCE	
SedR	- SEDIMENT	
	RESERVOIR	
SL	- SLASH	
ST	- SEDIMENT TRAP	
T	- TERRACING	
TB	- TOE BERM	
VB	- VEGETATED BUFFER	
W	- WATTLE	
	- ECB INFILLED	
	WITH FLEX TERRA	

Elev. Ungraded Ground At EMF 15C-17 Loc. Stake = 6330.6'
FINISHED GRADE FLEV. AT EMF 15C-17 LOC. STAKE = 6318.7'

UINTAH ENGINEERING & LAND SURVEYING
25 So. 200 East * Vernal, Utah 84078 * (435) 588-1017



This site plan illustrates the layout for a well completion project. The central feature is the **COMPLETION PIT (15' Deep)**, which is 440' long and 65' wide, with a 1:1 slope. To the left of the pit is a **Detention Pond** (80' x 130'). To the right is the **Production Equipment Area (125' x 75')**, which includes a **3-Phase Meter Houses**, a **Tank**, and a **Steel Cutting Bin (45x10x12)**. Other equipment includes a **Flare Stack & Flare Ditch**, **Portable Restrooms**, **Trash**, **Driller**, **Tool Pusher**, **Company Trailer**, and **Mud Man**. Storage areas include **FUEL TANK**, **CHANGE HOUSE**, **PARTS**, **WATER TANK**, and **DATA**. The plan also shows a **Berm** surrounding the site, a **Proposed Pipeline to H17 595**, and an **Existing Road**. A **LEGEND** defines the symbols: ST - Septic Tank, G - Generator, and WT - Water Tank.

LEGEND:
 ST - Septic Tank
 G - Generator
 WT - Water Tank

UINTAH ENGINEERING & LAND SURVEYING
85 So. 200 East * Vernal, Utah 84078 * (435) 789-1017

Encana OIL & GAS (USA) INC.

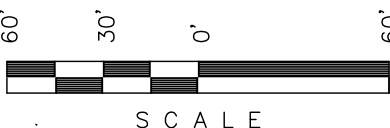
PRODUCTION SCHEMATIC FOR

WELL PAD F17 595

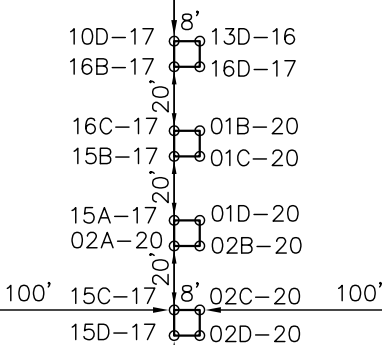
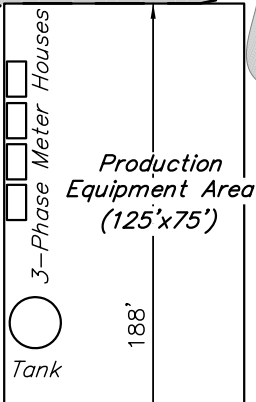
SECTION 17, T5S, R95W, 6th P.M.

SE 1/4 NW 1/4

SCALE: 1" = 60'
DATE: 09-28-10
DRAWN BY: D.R.B.
Revised: 10-18-10 D.R.B.
Revised: 10-21-10 D.R.B.



Sheet 6 of 11



SWMP LEGEND:
RV - REVEGATION
SCE - STABILIZED
CONSTRUCTION
ENTRANCE
ST - SEDIMENT TRAP

APPROXIMATE ACREAGES

TOTAL RECLAIMED AREA = ± 8.136 ACRES
UN-RECLAIMED AREA = ± 2.683 ACRES

UINTAH ENGINEERING & LAND SURVEYING
85 So. 200 East * Vernal, Utah 84078 * (435) 789-1017

Encana OIL & GAS (USA) INC.

SURFACE DISTURBANCE AREA FOR

WELL PAD F17 595

SECTION 17, T5S, R95W, 6th P.M.

SE 1/4 NW 1/4

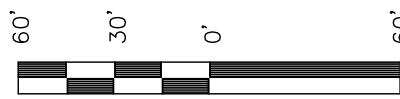
SCALE: 1" = 60'

DATE: 09-28-10

DRAWN BY: D.R.B.

Revised: 10-18-10 D.R.B.

Revised: 10-21-10 D.R.B.



SCALE

Sheet 7 of 11

