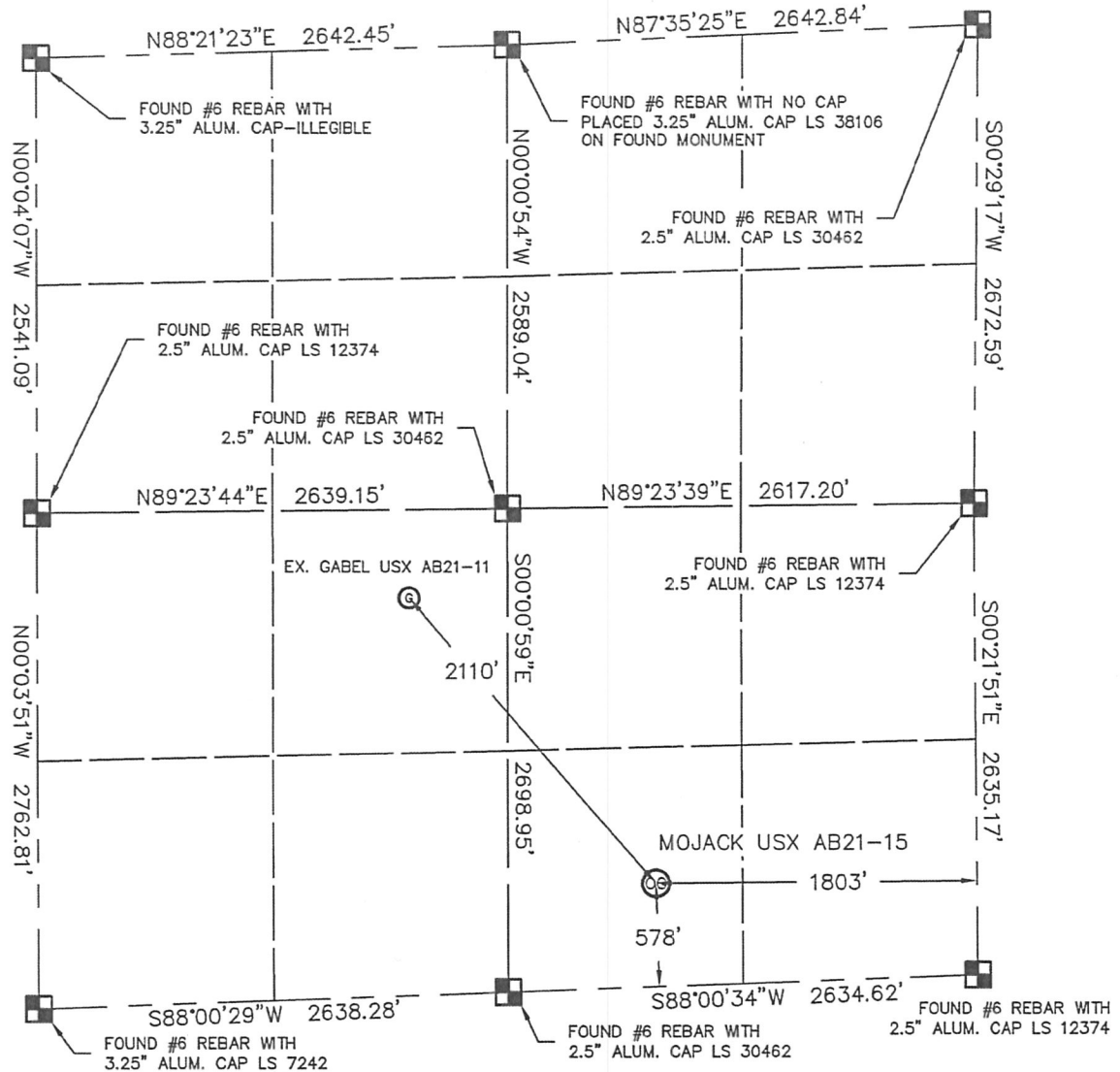


WELL LOCATION CERTIFICATE

MOJACK USX AB21-15

THIS MAP DOES NOT REPRESENT A BOUNDARY SURVEY

SECTION: 21
TOWNSHIP: 7N
RANGE: 64WIn accordance with a request from ERIK VAN DECAR with NOBLE ENERGY INC.King Surveyors Inc. has determined the surface location of the MOJACK USX AB21-15 to be 578' from the SOUTH line and 1803' from the EAST line, as measured at right angles, from the section lines of Section 21, Township 7 North, Range 64 West of the Sixth Principal Meridian, County of Weld, State of Colorado.I hereby state that this Well Location Certificate was prepared by me, or under my direct supervision, that the fieldwork was completed on 9-28-2010, for and on behalf of NOBLE ENERGY INC. That this is not a Land Survey Plat or an Improvement Survey Plat, and that it is not to be relied upon for establishment of fence, building, or other future improvement lines.

NOTE:

- 1) Bearings shown are Grid Bearings of the Colorado State Plane Coordinate System, North Zone, North American Datum 1983/2007. The lineal dimensions as contained herein are based upon the "U.S. Survey Foot."
- 2) Ground elevations are based on an observed GPS elevation (NAVD 1988 DATUM).
- 3) NEAREST EXISTING WELL: GABEL USX AB21-11, 2110' NORTHWEST
- 4) IMPROVEMENTS: See LOCATION DRAWING exhibit for all visible improvements within 400' of well head.
- 5) SURFACE USE: CROP FIELD
- 6) OPERATOR: JEFF POZVEK

SURFACE LOCATION

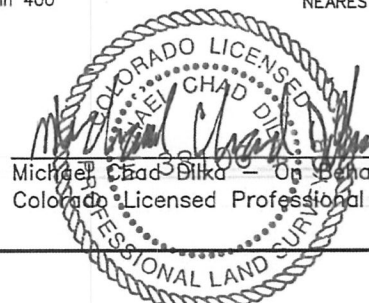
LATITUDE: 40.55290°N
 LONGITUDE: 104.55163°W
 PDOP: 1.1
 ELEV: 4901'
 1/4, 1/4: SW1/4 SE1/4
 NEAREST PROPERTY LINE: 578' SOUTH

NOTE

According to Colorado law, you must commence any legal action based upon any defect in this W.L.C. within three years after you discover such defect. In no event, may any action based upon any defect in this survey be commenced more than ten years after the date of the certificate shown hereon. (13-80-105 C.R.S.)

LEGEND

- = ALIQUOT MONUMENT AS DESCRIBED
 = CALCULATED POSITION



Michael Chad Dika - On Behalf Of King Surveyors, Inc.
 Colorado Licensed Professional Land Surveyor #38106

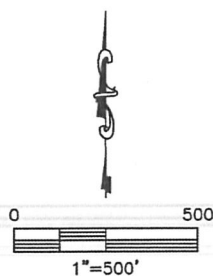
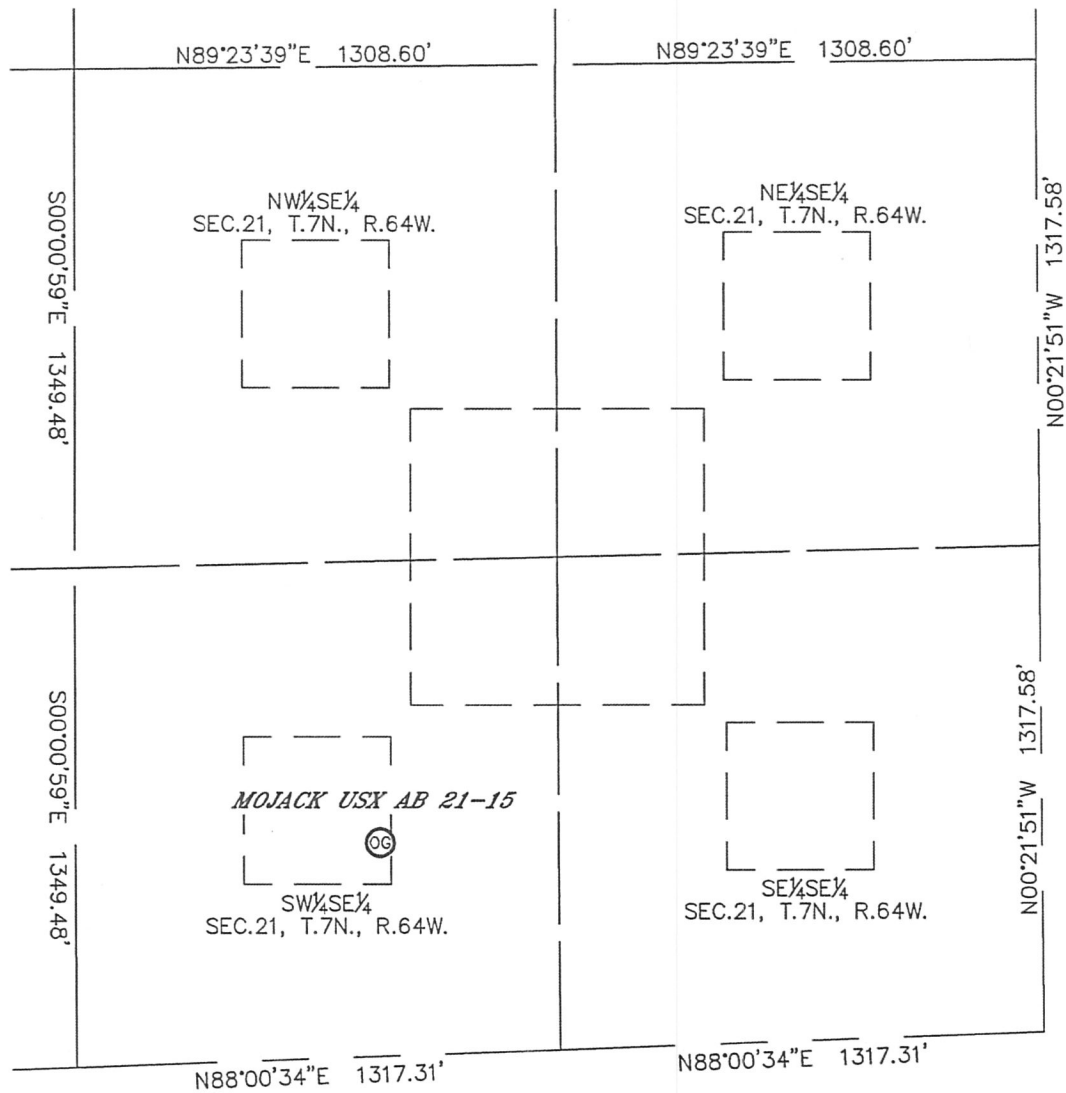
PROJECT#: 2008517

KING SURVEYORS, INC. 650 E. GARDEN DR. WINDSOR, CO 80550

SITE SKETCH

MOJACK USX AB21-15

SECTION: 21
TOWNSHIP: 7N
RANGE: 64W



PROJECT#: 2008517