

Denver Division- Colorado

**DJ - Hereford Ranch
Randall Creek 11-22H
Randall Creek 11-22H
Original Wellbore**

Plan: APD Directional Plan

Standard Planning Report

29 September, 2010

EOG RESOURCES INC.

Planning Report

Database:	EDM	Local Co-ordinate Reference:	Site Randall Creek 11-22H
Company:	Denver Division- Colorado	TVD Reference:	Rig @ 5336.00ft (TBD)
Project:	DJ - Hereford Ranch	MD Reference:	Rig @ 5336.00ft (TBD)
Site:	Randall Creek 11-22H	North Reference:	True
Well:	Randall Creek 11-22H	Survey Calculation Method:	Minimum Curvature
Wellbore:	Original Wellbore		
Design:	APD Directional Plan		

Project	DJ - Hereford Ranch, Weld County		
Map System:	US State Plane 1927 (Exact solution)	System Datum:	Mean Sea Level
Geo Datum:	NAD 1927 (NADCON CONUS)		
Map Zone:	Colorado North 501		

Site	Randall Creek 11-22H				
Site Position:		Northing:	605,647.83ft	Latitude:	40° 59' 22.960 N
From:	Lat/Long	Easting:	2,331,943.99ft	Longitude:	104° 17' 51.652 W
Position Uncertainty:	0.00 ft	Slot Radius:	"	Grid Convergence:	0.78 deg

Well	Randall Creek 11-22H					
Well Position	+N/-S	0.00 ft	Northing:	605,647.83 ft	Latitude:	40° 59' 22.960 N
	+E/-W	0.00 ft	Easting:	2,331,943.99 ft	Longitude:	104° 17' 51.652 W
Position Uncertainty		0.00 ft	Wellhead Elevation:	ft	Ground Level:	5,311.00ft

Wellbore	Original Wellbore				
Magnetics	Model Name	Sample Date	Declination (deg)	Dip Angle (deg)	Field Strength (nT)
	IGRF200510	12/31/2009	8.82	67.66	53,654

Design	APD Directional Plan			
Audit Notes:				
Version:	Phase:	PROTOTYPE	Tie On Depth:	0.00
Vertical Section:	Depth From (TVD) (ft)	+N/-S (ft)	+E/-W (ft)	Direction (deg)
	0.00	0.00	0.00	135.88

Plan Sections										
Measured Depth (ft)	Inclination (deg)	Azimuth (deg)	Vertical Depth (ft)	+N/-S (ft)	+E/-W (ft)	Dogleg Rate (°/100ft)	Build Rate (°/100ft)	Turn Rate (°/100ft)	TFO (deg)	Target
0.00	0.00	0.00	0.00	0.00	0.00	0.00	0.00	0.00	0.00	
1,550.00	0.00	0.00	1,550.00	0.00	0.00	0.00	0.00	0.00	0.00	
2,200.00	13.00	135.88	2,194.44	-52.71	51.12	2.00	2.00	0.00	135.88	
6,910.23	13.00	135.88	6,783.94	-813.30	788.81	0.00	0.00	0.00	0.00	
7,551.89	90.00	135.88	7,154.00	-1,147.26	1,112.71	12.00	12.00	0.00	0.00	
13,383.37	90.00	135.88	7,154.00	-5,333.28	5,172.67	0.00	0.00	0.00	0.00	Randall Creek 11-2

EOG RESOURCES INC.

Planning Report

Database:	EDM	Local Co-ordinate Reference:	Site Randall Creek 11-22H
Company:	Denver Division- Colorado	TVD Reference:	Rig @ 5336.00ft (TBD)
Project:	DJ - Hereford Ranch	MD Reference:	Rig @ 5336.00ft (TBD)
Site:	Randall Creek 11-22H	North Reference:	True
Well:	Randall Creek 11-22H	Survey Calculation Method:	Minimum Curvature
Wellbore:	Original Wellbore		
Design:	APD Directional Plan		

Planned Survey

Measured Depth (ft)	Inclination (deg)	Azimuth (deg)	Vertical Depth (ft)	+N/-S (ft)	+E/-W (ft)	Vertical Section (ft)	Dogleg Rate (°/100ft)	Build Rate (°/100ft)	Turn Rate (°/100ft)
0.00	0.00	0.00	0.00	0.00	0.00	0.00	0.00	0.00	0.00
100.00	0.00	0.00	100.00	0.00	0.00	0.00	0.00	0.00	0.00
200.00	0.00	0.00	200.00	0.00	0.00	0.00	0.00	0.00	0.00
300.00	0.00	0.00	300.00	0.00	0.00	0.00	0.00	0.00	0.00
400.00	0.00	0.00	400.00	0.00	0.00	0.00	0.00	0.00	0.00
500.00	0.00	0.00	500.00	0.00	0.00	0.00	0.00	0.00	0.00
600.00	0.00	0.00	600.00	0.00	0.00	0.00	0.00	0.00	0.00
700.00	0.00	0.00	700.00	0.00	0.00	0.00	0.00	0.00	0.00
800.00	0.00	0.00	800.00	0.00	0.00	0.00	0.00	0.00	0.00
900.00	0.00	0.00	900.00	0.00	0.00	0.00	0.00	0.00	0.00
1,000.00	0.00	0.00	1,000.00	0.00	0.00	0.00	0.00	0.00	0.00
1,100.00	0.00	0.00	1,100.00	0.00	0.00	0.00	0.00	0.00	0.00
1,200.00	0.00	0.00	1,200.00	0.00	0.00	0.00	0.00	0.00	0.00
1,300.00	0.00	0.00	1,300.00	0.00	0.00	0.00	0.00	0.00	0.00
1,400.00	0.00	0.00	1,400.00	0.00	0.00	0.00	0.00	0.00	0.00
1,410.00	0.00	0.00	1,410.00	0.00	0.00	0.00	0.00	0.00	0.00
9-5/8"									
1,500.00	0.00	0.00	1,500.00	0.00	0.00	0.00	0.00	0.00	0.00
1,550.00	0.00	0.00	1,550.00	0.00	0.00	0.00	0.00	0.00	0.00
1,600.00	1.00	135.88	1,600.00	-0.31	0.30	0.44	2.00	2.00	0.00
1,700.00	3.00	135.88	1,699.93	-2.82	2.73	3.93	2.00	2.00	0.00
1,800.00	5.00	135.88	1,799.68	-7.83	7.59	10.90	2.00	2.00	0.00
1,900.00	7.00	135.88	1,899.13	-15.33	14.87	21.35	2.00	2.00	0.00
2,000.00	9.00	135.88	1,998.15	-25.32	24.56	35.27	2.00	2.00	0.00
2,100.00	11.00	135.88	2,096.63	-37.78	36.64	52.63	2.00	2.00	0.00
2,200.00	13.00	135.88	2,194.44	-52.71	51.12	73.42	2.00	2.00	0.00
2,300.00	13.00	135.88	2,291.87	-68.85	66.78	95.92	0.00	0.00	0.00
2,400.00	13.00	135.88	2,389.31	-85.00	82.44	118.41	0.00	0.00	0.00
2,500.00	13.00	135.88	2,486.75	-101.15	98.10	140.91	0.00	0.00	0.00
2,600.00	13.00	135.88	2,584.19	-117.30	113.76	163.40	0.00	0.00	0.00
2,700.00	13.00	135.88	2,681.62	-133.44	129.43	185.90	0.00	0.00	0.00
2,800.00	13.00	135.88	2,779.06	-149.59	145.09	208.39	0.00	0.00	0.00
2,900.00	13.00	135.88	2,876.50	-165.74	160.75	230.89	0.00	0.00	0.00
3,000.00	13.00	135.88	2,973.93	-181.89	176.41	253.39	0.00	0.00	0.00
3,100.00	13.00	135.88	3,071.37	-198.04	192.07	275.88	0.00	0.00	0.00
3,200.00	13.00	135.88	3,168.81	-214.18	207.73	298.38	0.00	0.00	0.00
3,300.00	13.00	135.88	3,266.24	-230.33	223.39	320.87	0.00	0.00	0.00
3,400.00	13.00	135.88	3,363.68	-246.48	239.06	343.37	0.00	0.00	0.00
3,500.00	13.00	135.88	3,461.12	-262.63	254.72	365.86	0.00	0.00	0.00
3,600.00	13.00	135.88	3,558.56	-278.77	270.38	388.36	0.00	0.00	0.00
3,700.00	13.00	135.88	3,655.99	-294.92	286.04	410.85	0.00	0.00	0.00
3,800.00	13.00	135.88	3,753.43	-311.07	301.70	433.35	0.00	0.00	0.00
3,900.00	13.00	135.88	3,850.87	-327.22	317.36	455.84	0.00	0.00	0.00
4,000.00	13.00	135.88	3,948.30	-343.37	333.03	478.34	0.00	0.00	0.00
4,100.00	13.00	135.88	4,045.74	-359.51	348.69	500.83	0.00	0.00	0.00
4,200.00	13.00	135.88	4,143.18	-375.66	364.35	523.33	0.00	0.00	0.00
4,300.00	13.00	135.88	4,240.61	-391.81	380.01	545.82	0.00	0.00	0.00
4,400.00	13.00	135.88	4,338.05	-407.96	395.67	568.32	0.00	0.00	0.00
4,500.00	13.00	135.88	4,435.49	-424.10	411.33	590.81	0.00	0.00	0.00
4,600.00	13.00	135.88	4,532.93	-440.25	426.99	613.31	0.00	0.00	0.00
4,700.00	13.00	135.88	4,630.36	-456.40	442.66	635.80	0.00	0.00	0.00
4,800.00	13.00	135.88	4,727.80	-472.55	458.32	658.30	0.00	0.00	0.00
4,900.00	13.00	135.88	4,825.24	-488.69	473.98	680.79	0.00	0.00	0.00

EOG RESOURCES INC.

Planning Report

Database:	EDM	Local Co-ordinate Reference:	Site Randall Creek 11-22H
Company:	Denver Division- Colorado	TVD Reference:	Rig @ 5336.00ft (TBD)
Project:	DJ - Hereford Ranch	MD Reference:	Rig @ 5336.00ft (TBD)
Site:	Randall Creek 11-22H	North Reference:	True
Well:	Randall Creek 11-22H	Survey Calculation Method:	Minimum Curvature
Wellbore:	Original Wellbore		
Design:	APD Directional Plan		

Planned Survey

Measured Depth (ft)	Inclination (deg)	Azimuth (deg)	Vertical Depth (ft)	+N/-S (ft)	+E/-W (ft)	Vertical Section (ft)	Dogleg Rate (°/100ft)	Build Rate (°/100ft)	Turn Rate (°/100ft)
5,000.00	13.00	135.88	4,922.67	-504.84	489.64	703.29	0.00	0.00	0.00
5,100.00	13.00	135.88	5,020.11	-520.99	505.30	725.78	0.00	0.00	0.00
5,200.00	13.00	135.88	5,117.55	-537.14	520.96	748.28	0.00	0.00	0.00
5,300.00	13.00	135.88	5,214.98	-553.29	536.62	770.77	0.00	0.00	0.00
5,400.00	13.00	135.88	5,312.42	-569.43	552.29	793.27	0.00	0.00	0.00
5,500.00	13.00	135.88	5,409.86	-585.58	567.95	815.76	0.00	0.00	0.00
5,600.00	13.00	135.88	5,507.30	-601.73	583.61	838.26	0.00	0.00	0.00
5,700.00	13.00	135.88	5,604.73	-617.88	599.27	860.75	0.00	0.00	0.00
5,800.00	13.00	135.88	5,702.17	-634.02	614.93	883.25	0.00	0.00	0.00
5,900.00	13.00	135.88	5,799.61	-650.17	630.59	905.74	0.00	0.00	0.00
6,000.00	13.00	135.88	5,897.04	-666.32	646.25	928.24	0.00	0.00	0.00
6,100.00	13.00	135.88	5,994.48	-682.47	661.92	950.73	0.00	0.00	0.00
6,200.00	13.00	135.88	6,091.92	-698.62	677.58	973.23	0.00	0.00	0.00
6,300.00	13.00	135.88	6,189.35	-714.76	693.24	995.72	0.00	0.00	0.00
6,400.00	13.00	135.88	6,286.79	-730.91	708.90	1,018.22	0.00	0.00	0.00
6,500.00	13.00	135.88	6,384.23	-747.06	724.56	1,040.71	0.00	0.00	0.00
6,600.00	13.00	135.88	6,481.67	-763.21	740.22	1,063.21	0.00	0.00	0.00
6,700.00	13.00	135.88	6,579.10	-779.35	755.88	1,085.70	0.00	0.00	0.00
6,800.00	13.00	135.88	6,676.54	-795.50	771.55	1,108.20	0.00	0.00	0.00
6,900.00	13.00	135.88	6,773.98	-811.65	787.21	1,130.69	0.00	0.00	0.00
6,910.23	13.00	135.88	6,783.94	-813.30	788.81	1,132.99	0.00	0.00	0.00
7,000.00	23.77	135.88	6,869.01	-833.60	808.49	1,161.27	12.00	12.00	0.00
7,100.00	35.77	135.88	6,955.65	-869.18	843.00	1,210.84	12.00	12.00	0.00
7,200.00	47.77	135.88	7,030.09	-916.91	889.30	1,277.33	12.00	12.00	0.00
7,300.00	59.77	135.88	7,089.08	-974.71	945.36	1,357.85	12.00	12.00	0.00
7,400.00	71.77	135.88	7,130.04	-1,040.05	1,008.73	1,448.88	12.00	12.00	0.00
7,500.00	83.77	135.88	7,151.18	-1,110.08	1,076.65	1,546.43	12.00	12.00	0.00
7,551.89	90.00	135.88	7,154.00	-1,147.25	1,112.71	1,598.22	12.00	12.00	0.00
7"									
7,600.00	90.00	135.88	7,154.00	-1,181.79	1,146.20	1,646.33	0.00	0.00	0.00
7,700.00	90.00	135.88	7,154.00	-1,253.57	1,215.82	1,746.33	0.00	0.00	0.00
7,800.00	90.00	135.88	7,154.00	-1,325.36	1,285.44	1,846.33	0.00	0.00	0.00
7,900.00	90.00	135.88	7,154.00	-1,397.14	1,355.06	1,946.33	0.00	0.00	0.00
8,000.00	90.00	135.88	7,154.00	-1,468.92	1,424.69	2,046.33	0.00	0.00	0.00
8,100.00	90.00	135.88	7,154.00	-1,540.70	1,494.31	2,146.33	0.00	0.00	0.00
8,200.00	90.00	135.88	7,154.00	-1,612.49	1,563.93	2,246.33	0.00	0.00	0.00
8,300.00	90.00	135.88	7,154.00	-1,684.27	1,633.55	2,346.33	0.00	0.00	0.00
8,400.00	90.00	135.88	7,154.00	-1,756.05	1,703.17	2,446.33	0.00	0.00	0.00
8,500.00	90.00	135.88	7,154.00	-1,827.84	1,772.79	2,546.33	0.00	0.00	0.00
8,600.00	90.00	135.88	7,154.00	-1,899.62	1,842.42	2,646.33	0.00	0.00	0.00
8,700.00	90.00	135.88	7,154.00	-1,971.40	1,912.04	2,746.33	0.00	0.00	0.00
8,800.00	90.00	135.88	7,154.00	-2,043.19	1,981.66	2,846.33	0.00	0.00	0.00
8,900.00	90.00	135.88	7,154.00	-2,114.97	2,051.28	2,946.33	0.00	0.00	0.00
9,000.00	90.00	135.88	7,154.00	-2,186.75	2,120.90	3,046.33	0.00	0.00	0.00
9,100.00	90.00	135.88	7,154.00	-2,258.54	2,190.52	3,146.33	0.00	0.00	0.00
9,200.00	90.00	135.88	7,154.00	-2,330.32	2,260.15	3,246.33	0.00	0.00	0.00
9,300.00	90.00	135.88	7,154.00	-2,402.10	2,329.77	3,346.33	0.00	0.00	0.00
9,400.00	90.00	135.88	7,154.00	-2,473.89	2,399.39	3,446.33	0.00	0.00	0.00
9,500.00	90.00	135.88	7,154.00	-2,545.67	2,469.01	3,546.33	0.00	0.00	0.00
9,600.00	90.00	135.88	7,154.00	-2,617.45	2,538.63	3,646.33	0.00	0.00	0.00
9,700.00	90.00	135.88	7,154.00	-2,689.24	2,608.25	3,746.33	0.00	0.00	0.00
9,800.00	90.00	135.88	7,154.00	-2,761.02	2,677.87	3,846.33	0.00	0.00	0.00
9,900.00	90.00	135.88	7,154.00	-2,832.80	2,747.50	3,946.33	0.00	0.00	0.00

EOG RESOURCES INC.

Planning Report

Database:	EDM	Local Co-ordinate Reference:	Site Randall Creek 11-22H
Company:	Denver Division- Colorado	TVD Reference:	Rig @ 5336.00ft (TBD)
Project:	DJ - Hereford Ranch	MD Reference:	Rig @ 5336.00ft (TBD)
Site:	Randall Creek 11-22H	North Reference:	True
Well:	Randall Creek 11-22H	Survey Calculation Method:	Minimum Curvature
Wellbore:	Original Wellbore		
Design:	APD Directional Plan		

Planned Survey

Measured Depth (ft)	Inclination (deg)	Azimuth (deg)	Vertical Depth (ft)	+N/-S (ft)	+E/-W (ft)	Vertical Section (ft)	Dogleg Rate (°/100ft)	Build Rate (°/100ft)	Turn Rate (°/100ft)
10,000.00	90.00	135.88	7,154.00	-2,904.59	2,817.12	4,046.33	0.00	0.00	0.00
10,100.00	90.00	135.88	7,154.00	-2,976.37	2,886.74	4,146.33	0.00	0.00	0.00
10,200.00	90.00	135.88	7,154.00	-3,048.15	2,956.36	4,246.33	0.00	0.00	0.00
10,300.00	90.00	135.88	7,154.00	-3,119.94	3,025.98	4,346.33	0.00	0.00	0.00
10,400.00	90.00	135.88	7,154.00	-3,191.72	3,095.60	4,446.33	0.00	0.00	0.00
10,500.00	90.00	135.88	7,154.00	-3,263.50	3,165.23	4,546.33	0.00	0.00	0.00
10,600.00	90.00	135.88	7,154.00	-3,335.29	3,234.85	4,646.33	0.00	0.00	0.00
10,700.00	90.00	135.88	7,154.00	-3,407.07	3,304.47	4,746.33	0.00	0.00	0.00
10,800.00	90.00	135.88	7,154.00	-3,478.85	3,374.09	4,846.33	0.00	0.00	0.00
10,900.00	90.00	135.88	7,154.00	-3,550.64	3,443.71	4,946.33	0.00	0.00	0.00
11,000.00	90.00	135.88	7,154.00	-3,622.42	3,513.33	5,046.33	0.00	0.00	0.00
11,100.00	90.00	135.88	7,154.00	-3,694.20	3,582.95	5,146.33	0.00	0.00	0.00
11,200.00	90.00	135.88	7,154.00	-3,765.99	3,652.58	5,246.33	0.00	0.00	0.00
11,300.00	90.00	135.88	7,154.00	-3,837.77	3,722.20	5,346.33	0.00	0.00	0.00
11,400.00	90.00	135.88	7,154.00	-3,909.55	3,791.82	5,446.33	0.00	0.00	0.00
11,500.00	90.00	135.88	7,154.00	-3,981.34	3,861.44	5,546.33	0.00	0.00	0.00
11,600.00	90.00	135.88	7,154.00	-4,053.12	3,931.06	5,646.33	0.00	0.00	0.00
11,700.00	90.00	135.88	7,154.00	-4,124.90	4,000.68	5,746.33	0.00	0.00	0.00
11,800.00	90.00	135.88	7,154.00	-4,196.69	4,070.31	5,846.33	0.00	0.00	0.00
11,900.00	90.00	135.88	7,154.00	-4,268.47	4,139.93	5,946.33	0.00	0.00	0.00
12,000.00	90.00	135.88	7,154.00	-4,340.25	4,209.55	6,046.33	0.00	0.00	0.00
12,100.00	90.00	135.88	7,154.00	-4,412.04	4,279.17	6,146.33	0.00	0.00	0.00
12,200.00	90.00	135.88	7,154.00	-4,483.82	4,348.79	6,246.33	0.00	0.00	0.00
12,300.00	90.00	135.88	7,154.00	-4,555.60	4,418.41	6,346.33	0.00	0.00	0.00
12,400.00	90.00	135.88	7,154.00	-4,627.39	4,488.04	6,446.33	0.00	0.00	0.00
12,500.00	90.00	135.88	7,154.00	-4,699.17	4,557.66	6,546.33	0.00	0.00	0.00
12,600.00	90.00	135.88	7,154.00	-4,770.95	4,627.28	6,646.33	0.00	0.00	0.00
12,700.00	90.00	135.88	7,154.00	-4,842.74	4,696.90	6,746.33	0.00	0.00	0.00
12,800.00	90.00	135.88	7,154.00	-4,914.52	4,766.52	6,846.33	0.00	0.00	0.00
12,900.00	90.00	135.88	7,154.00	-4,986.30	4,836.14	6,946.33	0.00	0.00	0.00
13,000.00	90.00	135.88	7,154.00	-5,058.09	4,905.76	7,046.33	0.00	0.00	0.00
13,100.00	90.00	135.88	7,154.00	-5,129.87	4,975.39	7,146.33	0.00	0.00	0.00
13,200.00	90.00	135.88	7,154.00	-5,201.65	5,045.01	7,246.33	0.00	0.00	0.00
13,300.00	90.00	135.88	7,154.00	-5,273.43	5,114.63	7,346.33	0.00	0.00	0.00
13,383.37	90.00	135.88	7,154.00	-5,333.28	5,172.67	7,429.70	0.00	0.00	0.00
Randall Creek 11-22H (BHL)									

Targets

Target Name	Dip Angle (deg)	Dip Dir. (deg)	TVD (ft)	+N/-S (ft)	+E/-W (ft)	Northing (ft)	Easting (ft)	Latitude	Longitude
- hit/miss target									
- Shape									
Randall Creek 11-22H	0.00	0.00	7,154.00	-5,333.28	5,172.67	600,385.19	2,337,188.49	40° 58' 30.259 N	104° 16' 44.220 W
- plan hits target center									
- Point									

EOG RESOURCES INC.

Planning Report

Database:	EDM	Local Co-ordinate Reference:	Site Randall Creek 11-22H
Company:	Denver Division- Colorado	TVD Reference:	Rig @ 5336.00ft (TBD)
Project:	DJ - Hereford Ranch	MD Reference:	Rig @ 5336.00ft (TBD)
Site:	Randall Creek 11-22H	North Reference:	True
Well:	Randall Creek 11-22H	Survey Calculation Method:	Minimum Curvature
Wellbore:	Original Wellbore		
Design:	APD Directional Plan		

Casing Points

Measured Depth (ft)	Vertical Depth (ft)	Name	Casing Diameter (")	Hole Diameter (")
1,410.00	1,410.00	9-5/8"	9-5/8	13-1/2
7,551.89	7,154.00	7"	7	8-3/4
13,383.37	7,154.00	4 1/2"	4-1/2	6

Randall Creek 11-22H

Section 22 T12N R62W

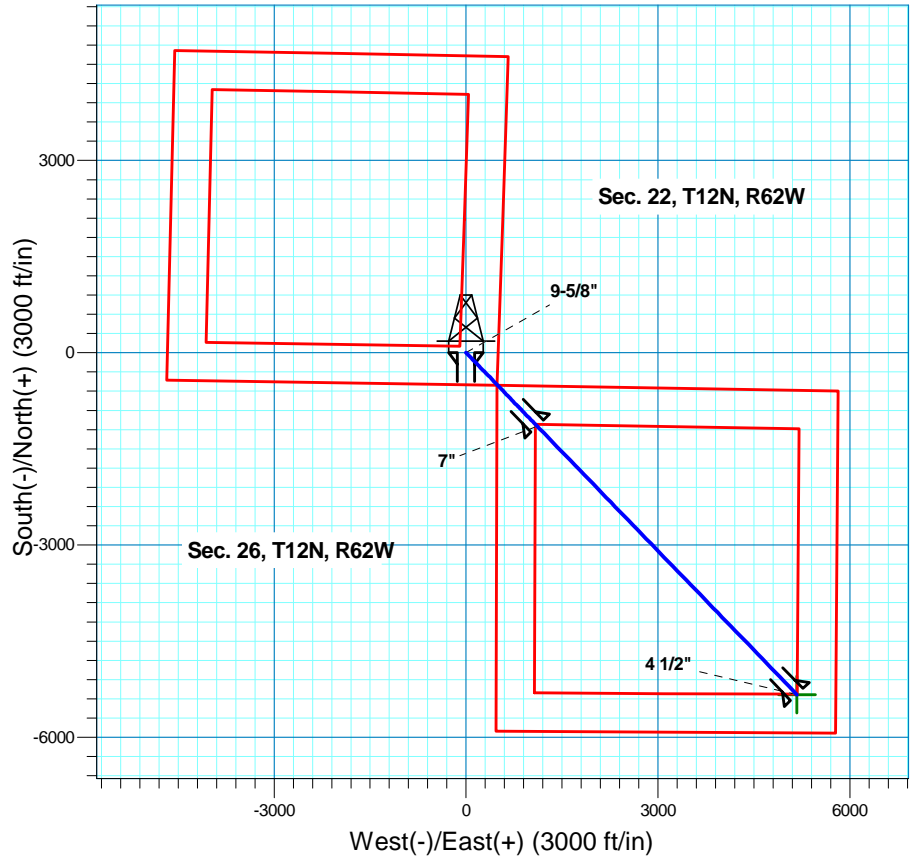
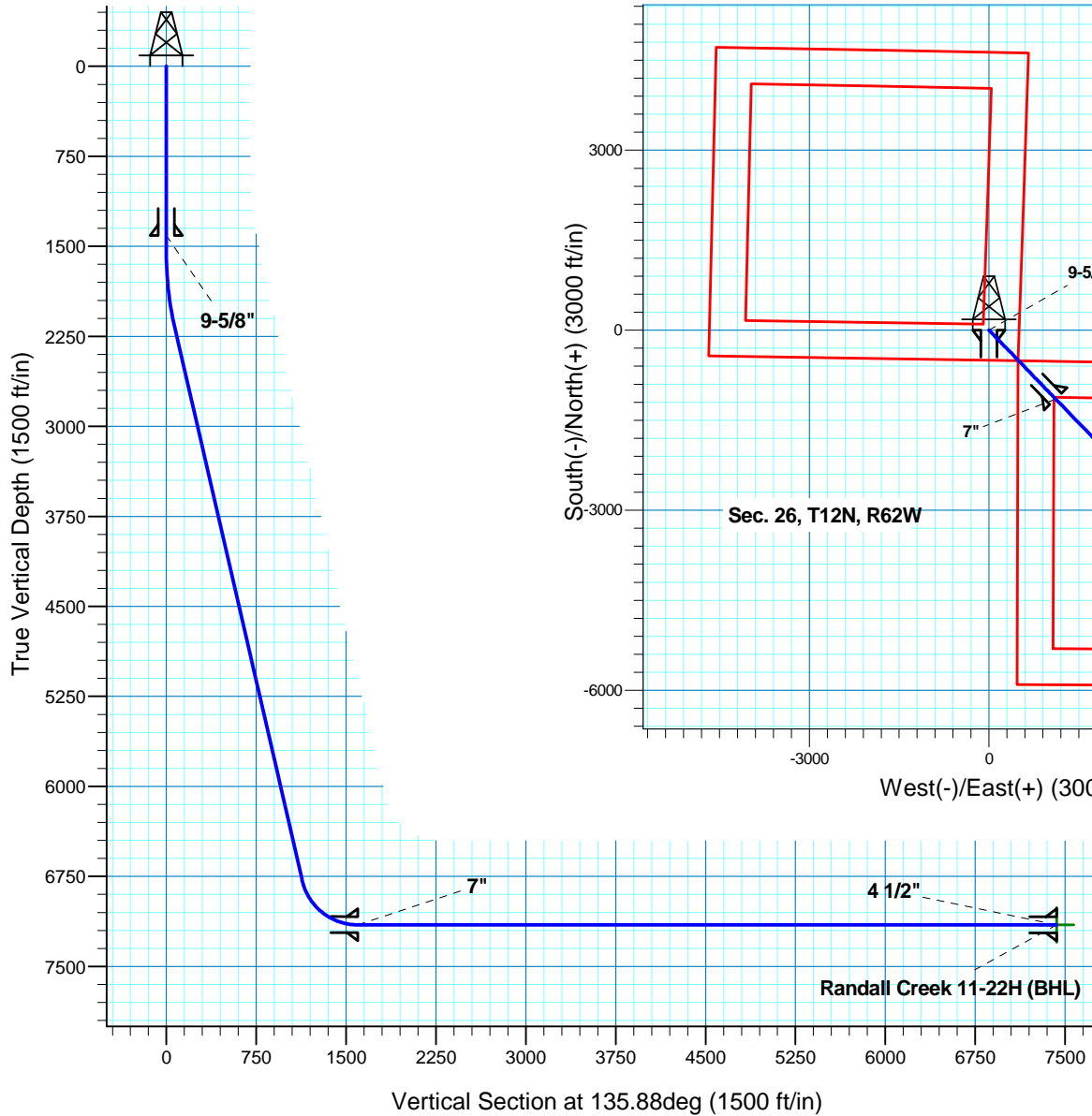
Weld County, CO



Surface Location

NAD 1927 (NADCON CONUS) Colorado North 501
Ground Elevation: 5311.00 Rig @ 5336.00ft (TBD)

Northing	Easting	Latitude	Longitude
605647.83	2331943.99	40°59' 22.960 N	104°17' 51.652 W



Azimuths to True North
Magnetic North: 8.82°
Magnetic Field
Strength: 53653.9snT
Dip Angle: 67.66°
Date: 12/31/2009
Model: IGRF200510

Project: DJ - Hereford Ranch
Site: Randall Creek 11-22H
Well: Randall Creek 11-22H
Plan: APD Directional Plan

SECTION DETAILS

Sec	MD	Inc	Azi	TVD	+N/-S	+E/-W	DLeg	TFace	VSec	Target
1	0.00	0.00	0.00	0.00	0.00	0.00	0.00	0.00	0.00	
2	1550.00	0.00	0.00	1550.00	0.00	0.00	0.00	0.00	0.00	
3	2200.00	13.00	135.88	2194.44	-52.71	51.12	2.00	135.88	73.42	
4	6910.23	13.00	135.88	6783.94	-813.30	788.81	0.00	0.00	1132.99	
5	7551.89	90.00	135.88	7154.00	-1147.26	1112.71	12.00	0.00	1598.22	
6	13383.37	90.00	135.88	7154.00	-5333.28	5172.67	0.00	0.00	7429.70	Randall Creek 11-22H (BHL)

TARGET DETAILS

Name	TVD	+N/-S	+E/-W	Northing	Easting	Latitude	Longitude	Shape
Randall Creek 11-22H (BHL)	7154.00	-5333.28	5172.67	600385.19	2337188.49	40°58' 30.259 N	104°16' 44.220 W	Po int