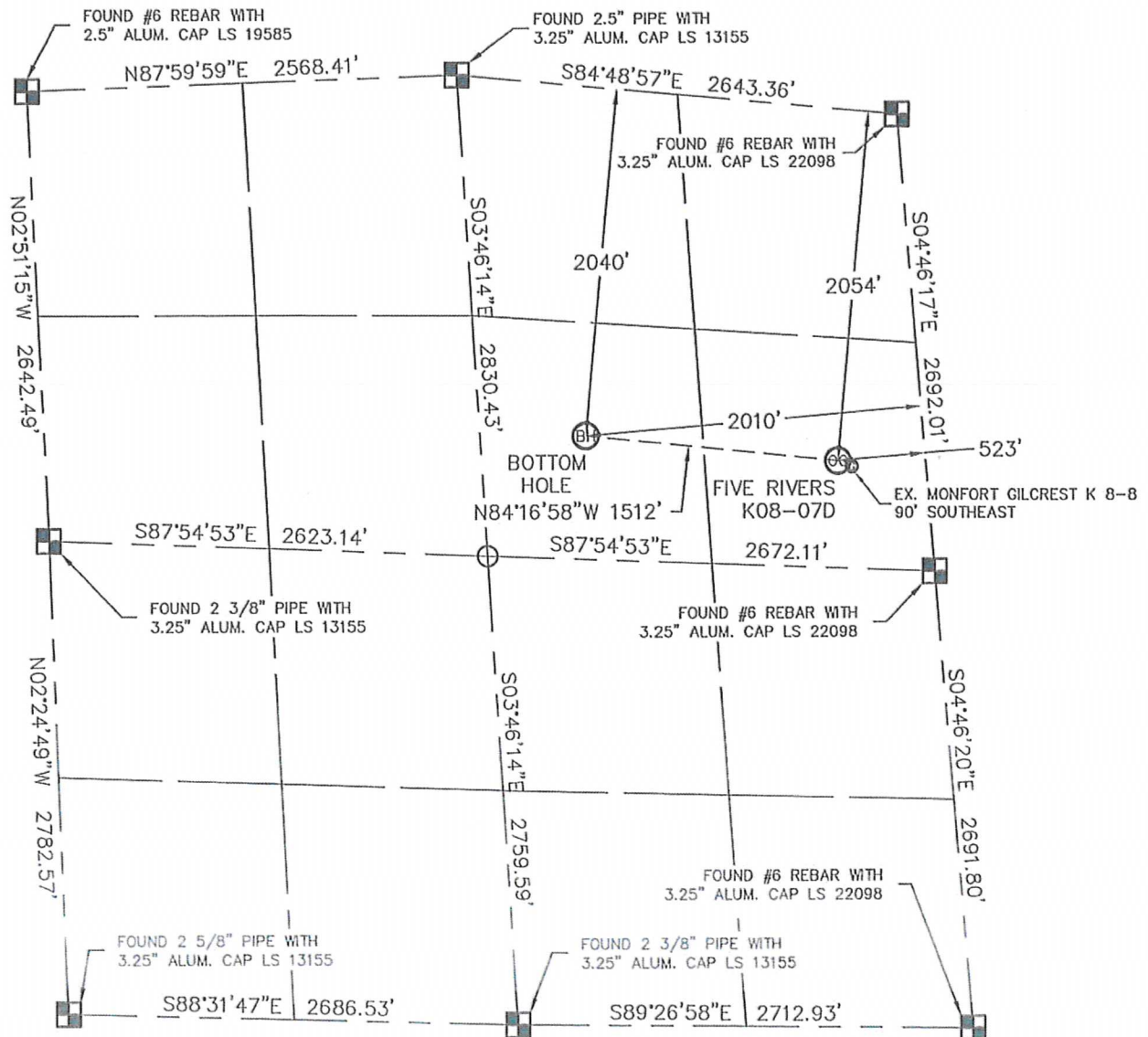


## WELL LOCATION CERTIFICATE

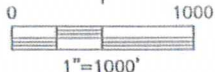
THIS MAP DOES NOT REPRESENT A BOUNDARY SURVEY

SECTION: 8  
TOWNSHIP: 4N  
RANGE: 66W

In accordance with a request from JOE MARTIN with Noble Energy Inc.

King Surveyors Inc. has determined the surface location of the FIVE RIVERS K08-07D to be 2054' from the North line and 523' from the East line and the bottom hole to be 2040' from the North line and 2010' from the East line, as measured at right angles, from the section lines of Section 8, Township 4 North, Range 66 West of the Sixth Principal Meridian, County of Weld, State of Colorado.

I hereby state that this Well Location Certificate was prepared by me, or under my direct supervision, that the fieldwork was completed on 6-1-10, for and on behalf of Noble Energy Inc. That this is not a Land Survey Plat or an Improvement Survey Plat, and that it is not to be relied upon for establishment of fence, building, or other future improvement lines.



## NOTE:

- 1) Bearings shown are Grid Bearings of the Colorado State Plane Coordinate System, North Zone, North American Datum 1983/2007. The lineal dimensions as contained herein are based upon the "U.S. Survey Foot."
- 2) Ground elevations are based on an observed GPS elevation (NAVD 1988 DATUM).
- 3) NEAREST EXISTING WELL: MONFORT GILCREST K 8-8 90' SOUTHEAST
- 4) IMPROVEMENTS: See VISIBLE IMPROVEMENTS exhibit for all visible improvements within 600' of well head.
- 5) SURFACE USE: PASTURE & EXISTING WELL SITE

SURFACE LOCATION  
LATITUDE: 40.32808°N  
LONGITUDE: 104.79475°W  
PDOP: 1.6  
ELEV: 4698'  
1/4, 1/4: SE1/4NE1/4  
NEAREST PROPERTY LINE: 523' EAST

BOTTOM HOLE  
LATITUDE: 40.32853°N  
LONGITUDE: 104.80014°W

## NOTE

According to Colorado law, you must commence any legal action based upon any defect in this W.L.C. within three years after you discover such defect. In no event, may any action based upon any defect in this survey be commenced more than ten years after the date of the certificate shown hereon. (13-80-105 C.R.S.)

## LEGEND

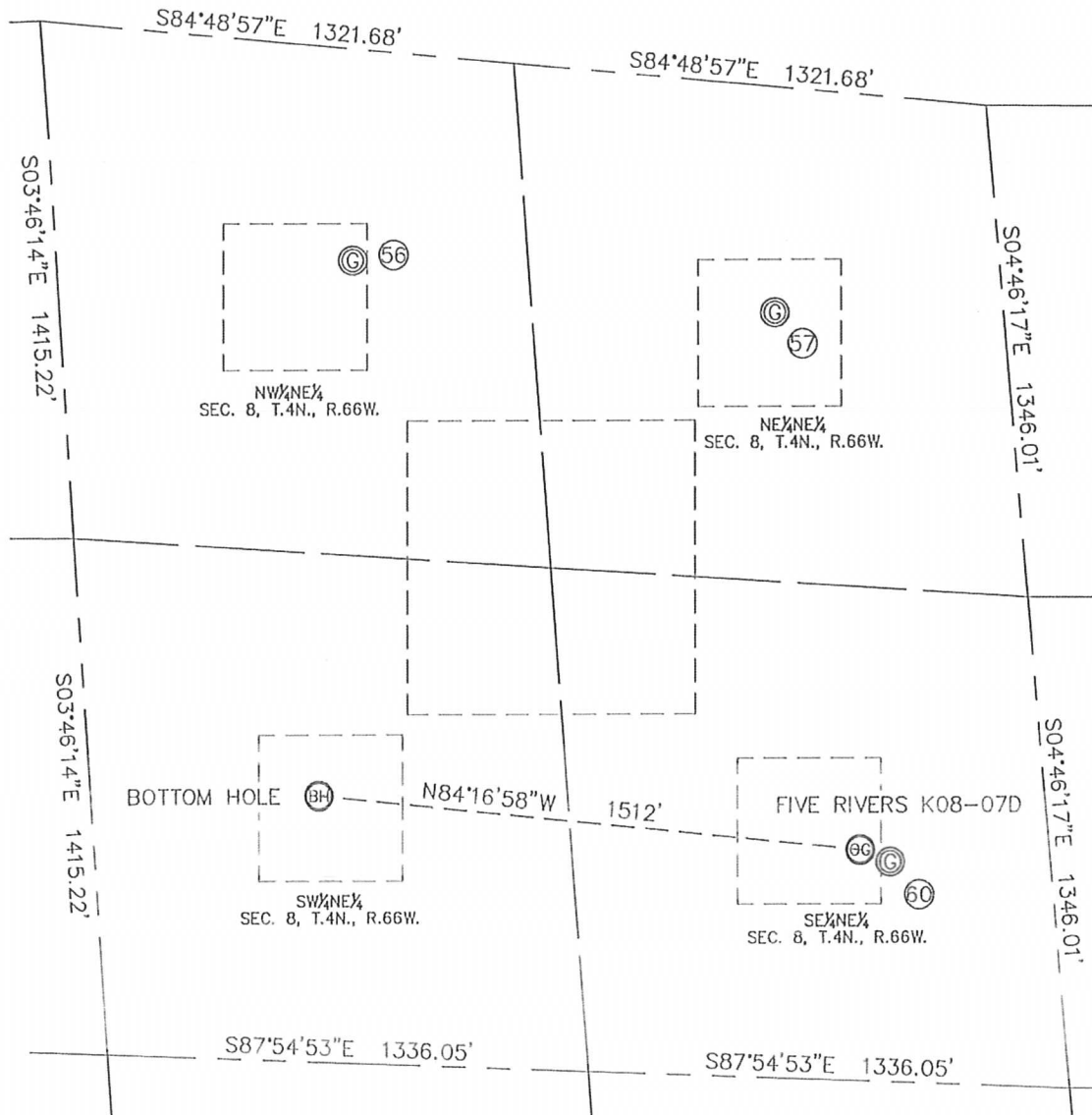
- = ALIQUOT MONUMENT AS DESCRIBED  
 = CALCULATED POSITION

Michael Chad Duka  
On Behalf of King Surveyors, Inc.  
Colorado Licensed Professional Land Surveyor #38106  
PROJECT#: 2010055  
6/4/2010

KING SURVEYORS, INC. 650 E. GARDEN DR. WINDSOR, CO 80550

## SITE SKETCH

SECTION: 8  
TOWNSHIP: 4N  
RANGE: 66W



56

KAMMERZELL 2-8  
NW 1/4 NE 1/4  
577' FNL  
1794' FEL  
LAT-40.33253°N  
LONG-104.79976°W  
PDOP: 1.6  
ELEV: 4699'

57

KAMMERZELL 1-8  
NE 1/4 NE 1/4  
615' FNL  
635' FEL  
LAT-40.33211°N  
LONG-104.79555°W  
PDOP: 1.5  
ELEV: 4698'

59

MONFORT GILCREST K8-8  
SE 1/4 NE 1/4  
2080' FNL  
443' FEL  
LAT-40.32799°N  
LONG-104.79445°W  
PDOP: 1.7  
ELEV: 4698'

