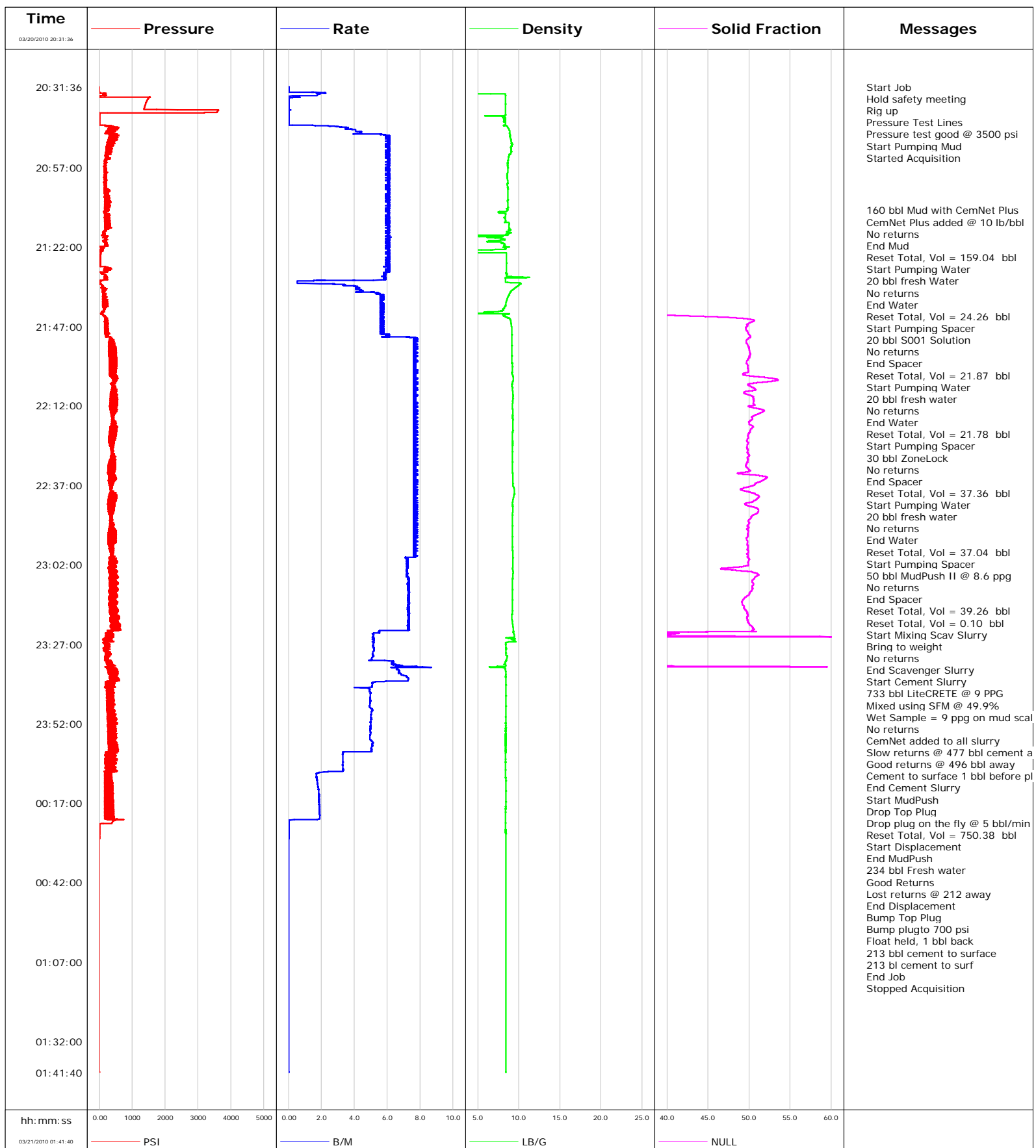


Well SGU 8051B-36 B36 496
Field Story Gulch
Engineer Dave Wanczyk
Country United States

Client Encana
SIR No. B2K7-00036
Job Type 9 5/8" Surface Casing
Job Date 03-20-2010



Well			Field		Job Start	Customer	Job Number
SGU 8051B-36 B36 496			Story Gulch		Mar/20/2010	Encana	B2K7-00036
Date	Time 24-hr clock	Treating Pressure PSI	Flow Rate B/M	Density LB/G	Solid Fraction NULL	Volume BBL	Message
03/20/2010	20:48:56	440	6.1	9.07	0	26.9	
03/20/2010	20:51:06	365	6.1	9.05	0	40.0	
03/20/2010	20:53:16	216	6.0	8.83	0	53.1	
03/20/2010	20:57:36	215	6.1	8.68	0	79.3	
03/20/2010	20:59:46	164	6.0	8.55	0	92.3	
03/20/2010	21:01:56	151	6.0	8.65	0	105.4	
03/20/2010	21:04:06	144	6.0	8.66	0	118.5	
03/20/2010	21:06:16	147	6.0	8.68	0	131.7	
03/20/2010	21:08:26	199	6.0	8.66	0	144.7	
03/20/2010	21:10:30						160 bbl Mud with CemNet Plus
03/20/2010	21:10:30	172	5.9	8.60	0	157.2	
03/20/2010	21:10:31						CemNet Plus added @ 10 lb/bbl
03/20/2010	21:10:31	241	6.0	8.60	0	157.3	
03/20/2010	21:10:32						No returns
03/20/2010	21:10:32	157	6.1	8.60	0	157.4	
03/20/2010	21:10:36	165	6.1	8.57	0	157.8	
03/20/2010	21:10:47						End Mud
03/20/2010	21:10:47	143	6.0	8.51	0	158.9	
03/20/2010	21:10:48						Reset Total, Vol = 159.04 bbl
03/20/2010	21:10:48	174	6.0	8.51	0	159.0	
03/20/2010	21:10:51						Start Pumping Water
03/20/2010	21:10:51	158	6.0	8.48	0	159.3	
03/20/2010	21:11:27						20 bbl fresh Water
03/20/2010	21:11:27	181	6.0	8.27	0	163.0	
03/20/2010	21:11:28						No returns
03/20/2010	21:11:28	188	6.0	8.32	0	163.1	
03/20/2010	21:12:46	260	6.1	8.38	0	170.9	
03/20/2010	21:14:48						End Water
03/20/2010	21:14:48	284	6.0	8.83	0	183.2	
03/20/2010	21:14:49						Reset Total, Vol = 24.26 bbl
03/20/2010	21:14:49	171	6.0	8.83	0	183.3	
03/20/2010	21:14:56						Start Pumping Spacer
03/20/2010	21:14:56	302	6.1	8.82	0	184.0	
03/20/2010	21:14:57						20 bbl S001 Solution
03/20/2010	21:14:57	200	6.1	8.82	0	184.1	
03/20/2010	21:14:58						No returns
03/20/2010	21:14:58	231	6.1	8.82	0	184.2	
03/20/2010	21:17:06	139	6.0	8.73	0	197.1	
03/20/2010	21:18:24						End Spacer
03/20/2010	21:18:24	76	6.0	0.46	0	205.0	
03/20/2010	21:18:26						Reset Total, Vol = 21.87 bbl
03/20/2010	21:18:26	96	6.0	1.36	0	205.2	
03/20/2010	21:18:28						Start Pumping Water
03/20/2010	21:18:28	144	6.1	1.94	0	205.4	
03/20/2010	21:18:31						20 bbl fresh water
03/20/2010	21:18:31						No returns
03/20/2010	21:18:31	132	6.1	1.99	0	205.7	
03/20/2010	21:19:16	204	6.1	7.47	0	210.2	
03/20/2010	21:21:26	167	6.1	8.22	0	223.3	
03/20/2010	21:22:00						End Water
03/20/2010	21:22:00	53	6.1	8.70	0	226.7	
03/20/2010	21:22:02						Reset Total, Vol = 21.78 bbl
03/20/2010	21:22:02	163	6.1	8.86	0	226.9	
03/20/2010	21:22:05						Start Pumping Spacer

Well			Field		Job Start		Customer		Job Number	
SGU 8051B-36 B36 496			Story Gulch		Mar/20/2010		Encana		B2K7-00036	
Date	Time 24-hr clock	Treating Pressure PSI	Flow Rate B/M	Density LB/G	Solid Fraction NULL	Volume BBL	Message			
03/20/2010	21:22:07						30 bbl ZoneLock			
03/20/2010	21:22:07						No returns			
03/20/2010	21:22:07	79	6.0	8.18	0	227.4				
03/20/2010	21:23:36	28	6.0	-0.03	0	236.4				
03/20/2010	21:25:46	24	6.1	8.48	0	249.5				
03/20/2010	21:27:56	24	6.0	8.48	0	262.6				
03/20/2010	21:28:08						End Spacer			
03/20/2010	21:28:08	25	6.1	8.47	0	263.8				
03/20/2010	21:28:13						Reset Total, Vol = 37.36 bbl			
03/20/2010	21:28:13	167	5.9	8.47	0	264.3				
03/20/2010	21:28:16						Start Pumping Water			
03/20/2010	21:28:16	173	6.1	8.48	0	264.6				
03/20/2010	21:28:19						20 bbl fresh water			
03/20/2010	21:28:19	219	6.0	8.48	0	264.9				
03/20/2010	21:28:20						No returns			
03/20/2010	21:28:20	219	6.0	8.47	0	265.0				
03/20/2010	21:30:06	75	5.9	8.47	28	275.6				
03/20/2010	21:32:16	220	5.8	8.38	0	288.3				
03/20/2010	21:34:26	88	4.2	9.84	10	293.4				
03/20/2010	21:36:15						End Water			
03/20/2010	21:36:15	138	5.1	9.01	8	301.2				
03/20/2010	21:36:17						Reset Total, Vol = 37.04 bbl			
03/20/2010	21:36:17	115	5.2	9.01	8	301.3				
03/20/2010	21:36:21						Start Pumping Spacer			
03/20/2010	21:36:21	133	5.2	8.97	8	301.7				
03/20/2010	21:36:23						50 bbl MudPush II @ 8.6 ppg			
03/20/2010	21:36:23	137	5.3	8.97	8	301.9				
03/20/2010	21:36:24						No returns			
03/20/2010	21:36:24	137	5.3	8.97	7	301.9				
03/20/2010	21:36:36	112	5.3	8.90	7	303.0				
03/20/2010	21:38:46	143	5.7	8.54	5	315.2				
03/20/2010	21:40:56	110	5.8	8.29	3	327.5				
03/20/2010	21:43:06	86	5.6	8.82	30	339.7				
03/20/2010	21:43:14						End Spacer			
03/20/2010	21:43:14	118	5.7	8.53	33	340.5				
03/20/2010	21:43:15						Reset Total, Vol = 39.26 bbl			
03/20/2010	21:43:15	69	5.8	8.23	34	340.6				
03/20/2010	21:43:16						Reset Total, Vol = 0.10 bbl			
03/20/2010	21:43:16	66	5.7	8.11	34	340.7				
03/20/2010	21:43:21						Start Mixing Scav Slurry			
03/20/2010	21:43:21	108	5.7	8.14	36	341.2				
03/20/2010	21:45:16	178	5.7	9.01	51	352.0				
03/20/2010	21:45:39						Bring to weight			
03/20/2010	21:45:39						No returns			
03/20/2010	21:45:39	205	5.6	9.03	50	354.2				
03/20/2010	21:45:41						End Scavenger Slurry			
03/20/2010	21:45:41	165	5.8	9.04	50	354.4				
03/20/2010	21:45:43						Start Cement Slurry			
03/20/2010	21:45:43	207	5.6	9.04	50	354.6				
03/20/2010	21:47:26	200	5.6	9.13	50	364.3				
03/20/2010	21:49:36	188	6.1	9.17	50	376.6				
03/20/2010	21:51:46	420	7.7	9.16	50	391.9				
03/20/2010	21:53:56	297	7.6	9.16	50	408.5				
03/20/2010	21:56:06	289	7.7	9.14	50	425.0				

Well SGU 8051B-36 B36 496			Field Story Gulch		Job Start Mar/20/2010	Customer Encana	Job Number B2K7-00036
Date	Time 24-hr clock	Treating Pressure PSI	Flow Rate B/M	Density LB/G	Solid Fraction NULL	Volume BBL	Message
03/20/2010	21:59:34						733 bbl LiteCRETE @ 9 PPG
03/20/2010	21:59:34						Mixed using SFM @ 49.9%
03/20/2010	21:59:34	319	7.6	9.19	50	451.6	
03/20/2010	21:59:35						Wet Sample = 9 ppg on mud scale
03/20/2010	21:59:35						No returns
03/20/2010	21:59:35	520	7.7	9.19	50	451.7	
03/20/2010	21:59:38						CemNet added to all slurry
03/20/2010	21:59:38	516	7.6	9.19	50	452.1	
03/20/2010	22:00:26	329	7.6	9.19	50	458.2	
03/20/2010	22:02:36	327	7.7	9.30	50	474.7	
03/20/2010	22:04:46	453	7.6	9.21	51	491.3	
03/20/2010	22:06:56	406	7.7	9.22	51	507.9	
03/20/2010	22:09:06	354	7.7	9.31	50	524.5	
03/20/2010	22:11:16	329	7.6	9.24	51	541.0	
03/20/2010	22:13:26	370	7.6	9.25	52	557.6	
03/20/2010	22:15:36	408	7.7	9.24	50	574.2	
03/20/2010	22:17:46	383	7.6	9.27	50	590.7	
03/20/2010	22:19:56	332	7.6	9.24	50	607.3	
03/20/2010	22:22:06	288	7.6	9.24	50	623.9	
03/20/2010	22:24:16	330	7.7	9.24	50	640.5	
03/20/2010	22:26:26	401	7.7	9.22	50	657.1	
03/20/2010	22:28:36	345	7.8	9.22	50	673.7	
03/20/2010	22:30:46	276	7.6	9.21	50	690.2	
03/20/2010	22:32:56	255	7.6	9.21	49	706.8	
03/20/2010	22:35:06	288	7.6	9.27	52	723.4	
03/20/2010	22:37:16	347	7.6	9.30	50	739.9	
03/20/2010	22:39:26	343	7.7	9.43	50	756.5	
03/20/2010	22:41:36	274	7.6	9.28	51	773.1	
03/20/2010	22:43:46	277	7.6	9.24	50	789.7	
03/20/2010	22:45:56	330	7.8	9.22	51	806.2	
03/20/2010	22:47:27						Slow returns @ 477 bbl cement away
03/20/2010	22:47:27	392	7.6	9.19	50	817.8	
03/20/2010	22:48:06	312	7.7	9.19	50	822.8	
03/20/2010	22:50:16	410	7.7	9.20	50	839.4	
03/20/2010	22:50:50						Good returns @ 496 bbl away
03/20/2010	22:50:50	470	7.6	9.20	50	843.7	
03/20/2010	22:52:26	273	7.6	9.20	50	856.0	
03/20/2010	22:54:36	273	7.8	9.21	50	872.6	
03/20/2010	22:56:46	305	7.6	9.23	50	889.1	
03/20/2010	22:58:56	372	7.6	9.25	50	905.7	
03/20/2010	23:01:06	288	7.2	9.28	50	921.6	
03/20/2010	23:03:16	389	7.2	9.23	47	937.2	
03/20/2010	23:05:26	373	7.2	9.28	51	952.8	
03/20/2010	23:07:36	326	7.3	9.22	50	968.5	
03/20/2010	23:09:46	304	7.3	9.20	50	984.3	
03/20/2010	23:11:56	318	7.3	9.19	50	1000.1	
03/20/2010	23:14:06	545	7.3	9.19	49	1015.9	
03/20/2010	23:16:16	559	7.3	9.20	50	1031.7	
03/20/2010	23:18:26	607	7.3	9.17	50	1047.5	
03/20/2010	23:20:36	619	7.3	9.23	50	1063.3	
03/20/2010	23:22:46	350	5.5	9.36	50	1079.0	
03/20/2010	23:24:30						Cement to surface 1 bbl before plug drop
03/20/2010	23:24:30	271	5.1	9.43	50	1088.1	
03/20/2010	23:24:50						End Cement Slurry

Well SGU 8051B-36 B36 496			Field Story Gulch		Job Start Mar/20/2010	Customer Encana	Job Number B2K7-00036
Date	Time 24-hr clock	Treating Pressure PSI	Flow Rate B/M	Density LB/G	Solid Fraction NULL	Volume BBL	Message
03/20/2010	23:24:51						Start MudPush
03/20/2010	23:24:51	261	5.1	9.40	0	1089.9	
03/20/2010	23:24:54						Drop Top Plug
03/20/2010	23:24:54	189	5.1	9.09	0	1090.2	
03/20/2010	23:24:56						Drop plug on the fly @ 5 bbl/min
03/20/2010	23:24:56	375	5.1	8.91	0	1090.4	
03/20/2010	23:25:04						Reset Total, Vol = 750.38 bbl
03/20/2010	23:25:04	192	5.2	8.46	0	1091.1	
03/20/2010	23:25:05						Start Displacement
03/20/2010	23:25:05	192	5.2	8.58	0	1091.1	
03/20/2010	23:25:20						End MudPush
03/20/2010	23:25:20	126	5.2	9.55	0	1092.4	
03/20/2010	23:27:06	252	5.1	8.41	0	1101.6	
03/20/2010	23:29:16	245	5.1	8.41	0	1112.7	
03/20/2010	23:31:26	217	5.1	8.55	20	1123.8	
03/20/2010	23:33:36	375	6.8	8.45	14	1136.6	
03/20/2010	23:34:59						234 bbl Fresh water
03/20/2010	23:34:59	290	6.6	8.35	0	1146.0	
03/20/2010	23:35:00						Good Returns
03/20/2010	23:35:00	387	6.6	8.35	0	1146.1	
03/20/2010	23:35:46	421	6.7	8.41	0	1151.2	
03/20/2010	23:37:56	504	7.3	8.41	0	1166.4	
03/20/2010	23:40:06	241	5.1	8.41	0	1179.1	
03/20/2010	23:42:16	227	5.0	8.41	0	1189.7	
03/20/2010	23:44:26	351	5.0	8.40	0	1200.4	
03/20/2010	23:46:36	262	4.9	8.40	0	1211.2	
03/20/2010	23:48:46	255	5.0	8.41	0	1222.1	
03/20/2010	23:50:56	513	5.0	8.40	0	1232.9	
03/20/2010	23:53:06	278	5.0	8.40	0	1243.8	
03/20/2010	23:55:16	411	5.0	8.40	0	1254.5	
03/20/2010	23:57:26	488	5.0	8.40	0	1265.3	
03/20/2010	23:59:36	324	5.0	8.40	0	1276.3	
03/21/2010	00:01:46	175	3.3	8.40	0	1285.6	
03/21/2010	00:03:56	380	3.3	8.40	0	1292.8	
03/21/2010	00:06:06	187	3.3	8.40	0	1299.9	
03/21/2010	00:08:16	236	1.7	8.40	0	1305.3	
03/21/2010	00:10:00						Lost returns @ 212 away
03/21/2010	00:10:00	206	1.7	8.41	0	1308.3	
03/21/2010	00:10:26	162	1.8	8.41	0	1309.0	
03/21/2010	00:12:36	390	1.8	8.41	0	1312.9	
03/21/2010	00:14:46	220	1.8	8.41	0	1316.9	
03/21/2010	00:16:56	154	1.9	8.40	0	1320.9	
03/21/2010	00:19:06	162	1.9	8.40	0	1325.0	
03/21/2010	00:21:16	398	1.9	8.40	0	1329.1	
03/21/2010	00:22:10						End Displacement
03/21/2010	00:22:10						Bump Top Plug
03/21/2010	00:22:10						Bump plugto 700 psi
03/21/2010	00:22:10	735	1.6	8.40	0	1330.8	
03/21/2010	00:23:26	153	0.0	8.40	0	1330.9	
03/21/2010	00:24:29						Float held, 1 bbl back
03/21/2010	00:24:29						213 bbl cement to surface
03/21/2010	00:24:29						213 bl cement to surf
03/21/2010	00:24:29	-15	0.0	8.40	0	1330.9	
03/21/2010	00:25:36	-15	0.0	8.40	0	1330.9	

Well SGU 8051B-36 B36 496			Field Story Gulch		Job Start Mar/20/2010		Customer Encana		Job Number B2K7-00036	
Date	Time 24-hr clock	Treating Pressure PSI	Flow Rate B/M	Density LB/G	Solid Fraction NULL	Volume BBL	Message			
03/21/2010	00:28:09						End Job			
03/21/2010	00:28:09	-15	0.0	8.41	0	1330.9				

Post Job Summary

Average Pump Rates, bbl/min					Volume of Fluid Injected, bbl					
Slurry 5.5	N2	Mud 6.0	Maximum Rate 8.0		Total Slurry 733.0	Mud 160.0	Spacer 160.0	N2		
Treating Pressure Summary, psi					Breakdown Fluid					
Maximum 3500	Final 0	Average 300	Bump Plug to 700	Breakdown	Type		Volume		Density	
Avg. N2 Percent		Designed Slurry Volume 733.0 bbl		Displacement 234.0 bbl		Mix Water Temp 70 degF		Cement Circulated to Surface? <input checked="" type="checkbox"/>		Volume 213.0 bbl
								Washed Thru Perfs <input type="checkbox"/>		To
Customer or Authorized Representative Craig Weiland				Schlumberger Supervisor Dave Wanczyk				Circulation Lost <input checked="" type="checkbox"/>		Job Completed <input checked="" type="checkbox"/>
								-		-