



SUPERIOR  
Black Lick, Pa.  
Mercer, Pa.  
Wooster, Ohio  
Cleveland, Ok.

GAMMA RAY C.C.L.  
CEMENT BOND V.D.L.

Company KERR-MCGEE OIL & GAS ONSHORE LP  
Well PIONEER 39-2  
Field WATTENBERG  
County WELD  
State COLORADO

Company KERR-MCGEE OIL & GAS ONSHORE LP  
Well PIONEER 39-2  
Field WATTENBERG  
County WELD State COLORADO

Location: API # : 0512330406

Other Services

SHL: 676' FSL & 660' FEL SE SE  
EST. BHL: 1245' FSL & 80' FEL SE SE  
SEC 2 TWP 2N RGE 65W

Elevation

Permanent Datum GL  
Log Measured From KB  
Drilling Measured From KB  
Elevation 4848  
K.B. 4865  
D.F. 4864  
G.L. 4848

Date 07-JAN-2010

Run Number		ONE					
Depth Driller		7366					
Depth Logger		7281					
Bottom Logged Interval		7280					
Top Log Interval		1042					
Open Hole Size		7-7/8"					
Type Fluid		WATER					
Density / Viscosity		N/A					
Max. Recorded Temp.		242° F					
Estimated Cement Top		1285					
Time Well Ready		MAST UNIT					
Time Logger on Bottom		1-11/16 #1.					
Equipment Number		703					
Location		45					
Recorded By		LEROY HOBBS					
Witnessed By		LEWIS CAMP					
Borehole Record		Tubing Record					
Run Number	Bit	From	To	Size	Weight	From	To
Casing Record	Size		Wgt/Ft		Top		Bottom
Surface String	8.63 / J-55		24.00		SURFACE		852
Prot. String							
Production String	4.50 / I-80		11.60		SURFACE		7346
Liner							

<<< Fold Here >>>

All interpretations are opinions based on inferences from electrical or other measurements and we cannot and do not guarantee the accuracy or correctness of any interpretation, and we shall not, except in the case of gross or willful negligence on our part, be liable or responsible for any loss, costs, damages, or expenses incurred or sustained by anyone resulting from any interpretation made by any of our officers, agents or employees. These interpretations are also subject to our general terms and conditions set out in our current Price Schedule.

### Comments

THANK YOU FOR USING SUPERIOR WELL SERVICES.

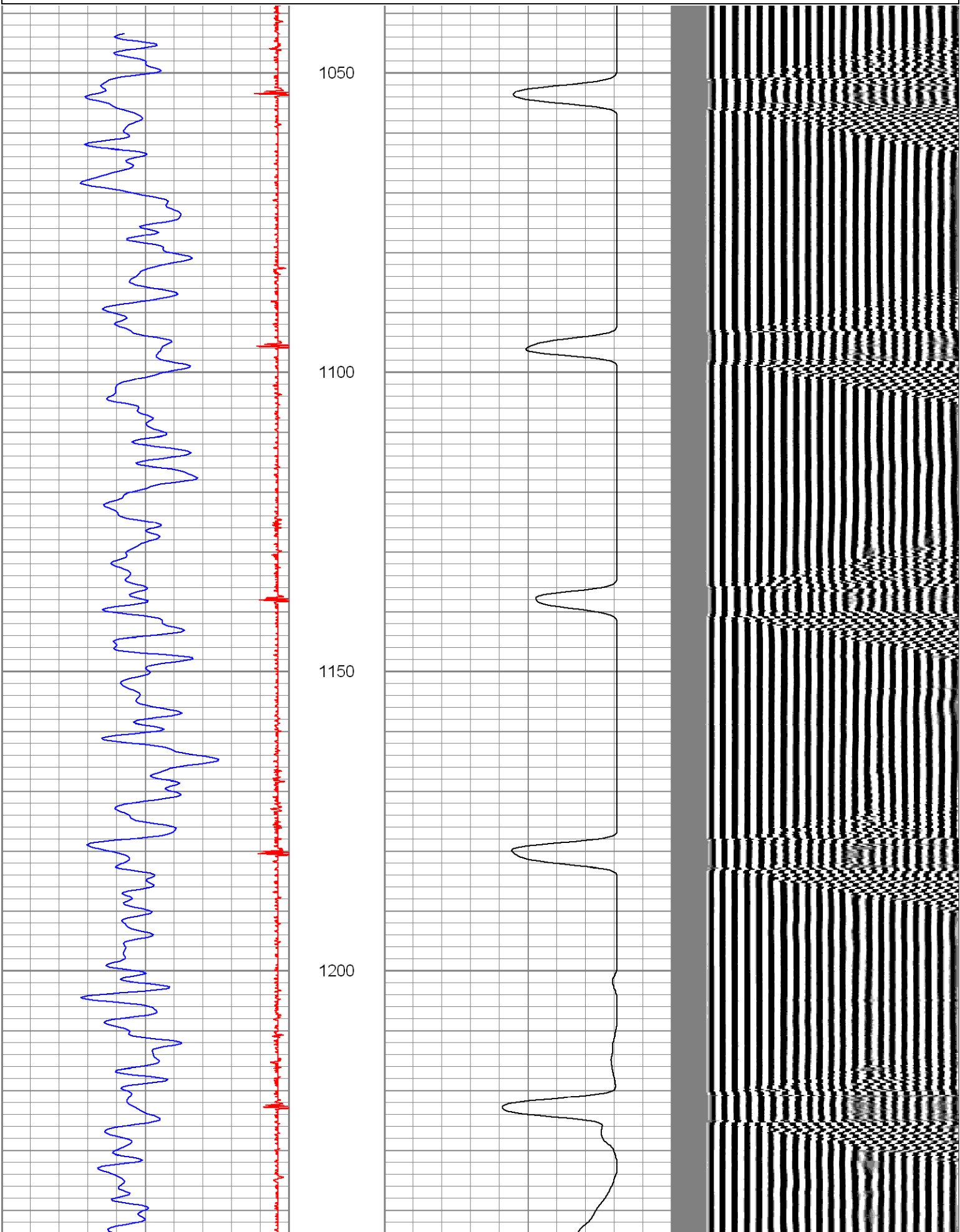
CORRECTED UP HOLE 4.5 FEET TO PSI  
COMPENSATED DENSITY LOG DATED DECEMBER 12, 2009.

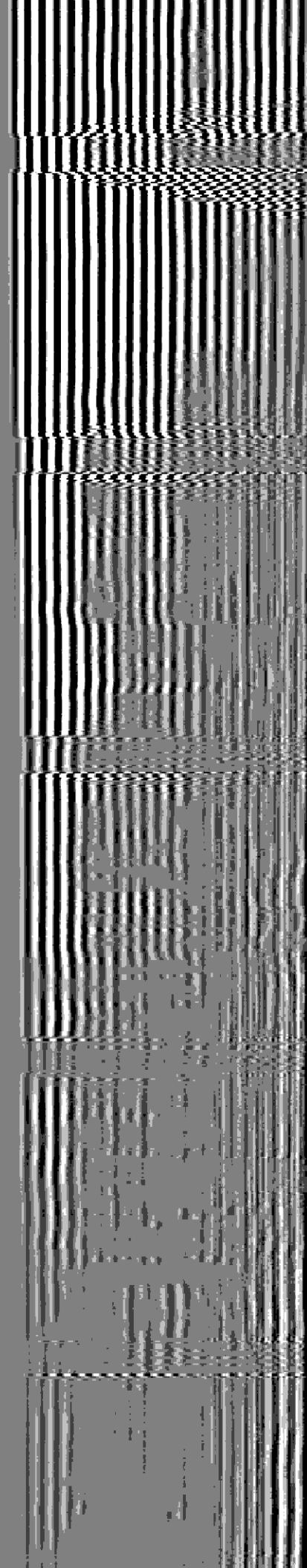
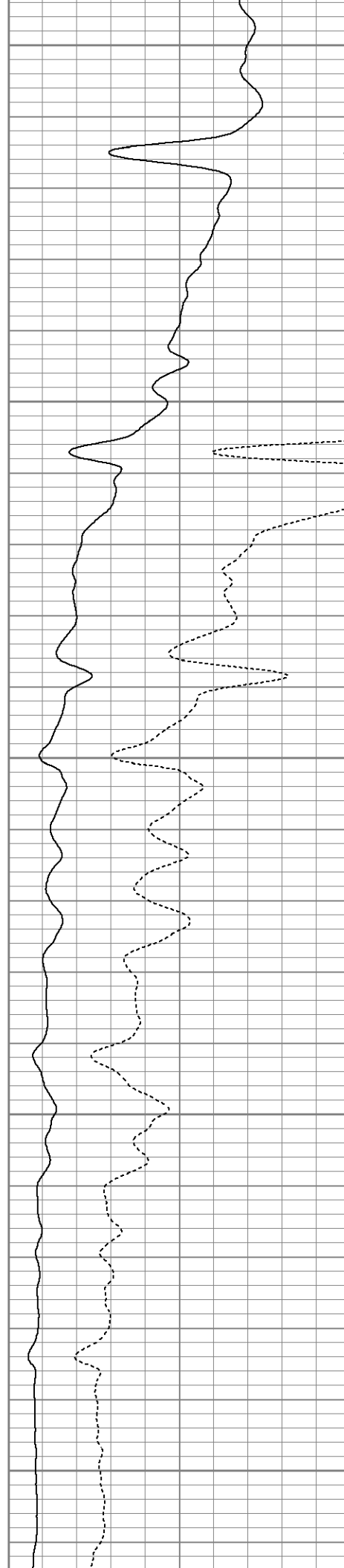
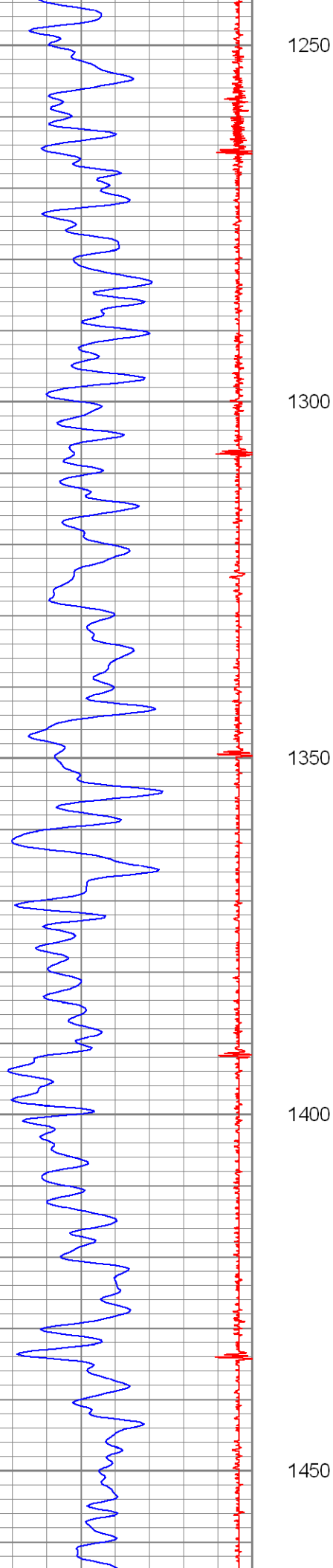
Database File: pioneer39-2cbl.db  
Dataset Pathname: pass3  
Presentation Format: nuexcbi  
Dataset Creation: Thu Jan 07 09:13:25 2010 by Log Open-Cased 071220  
Charted by: Depth in Feet scaled 1:240

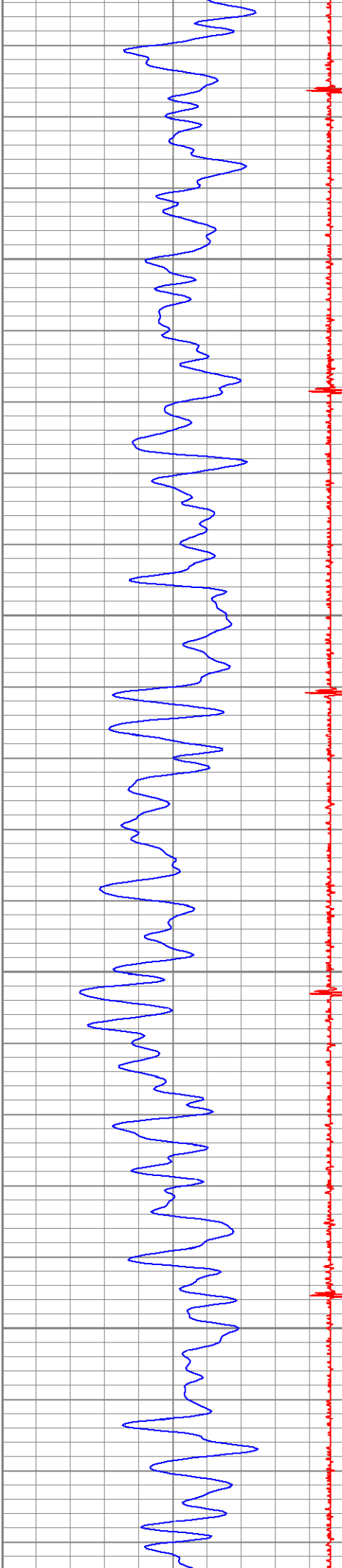
8	CCL	-0.3
30	Gamma Ray (GAPI)	120

0	Amplified Amplitude (mV)	30	200
0	Amplitude (mV)	100	

V D L 1200





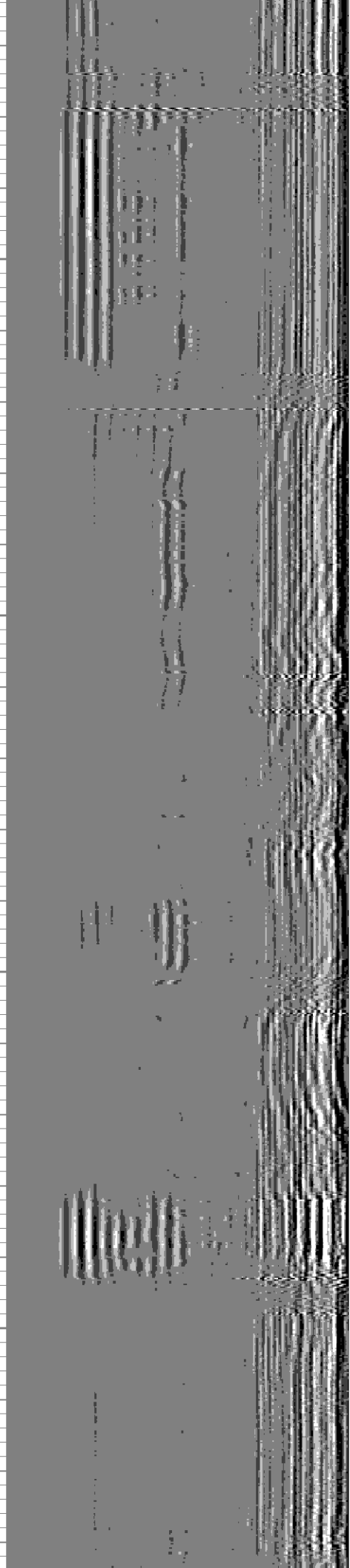
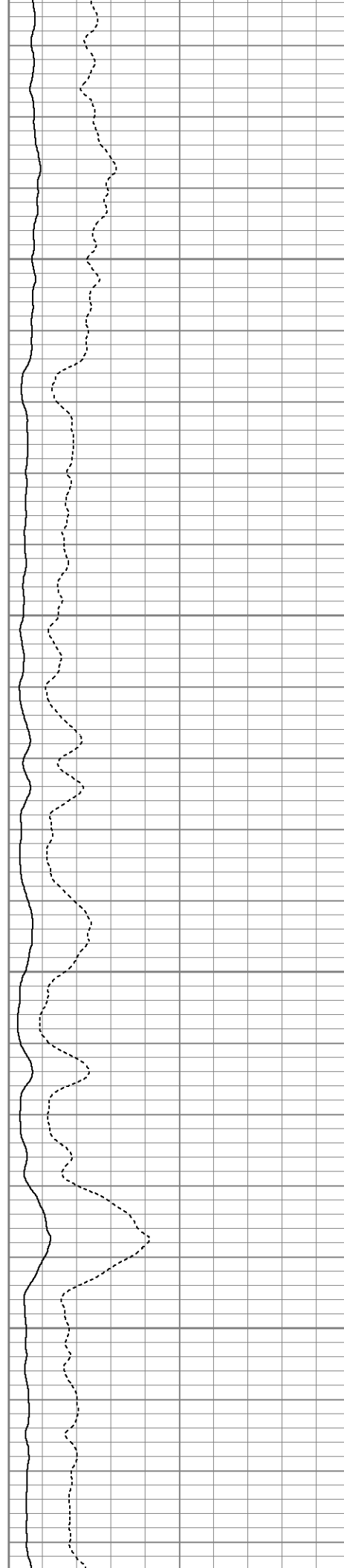


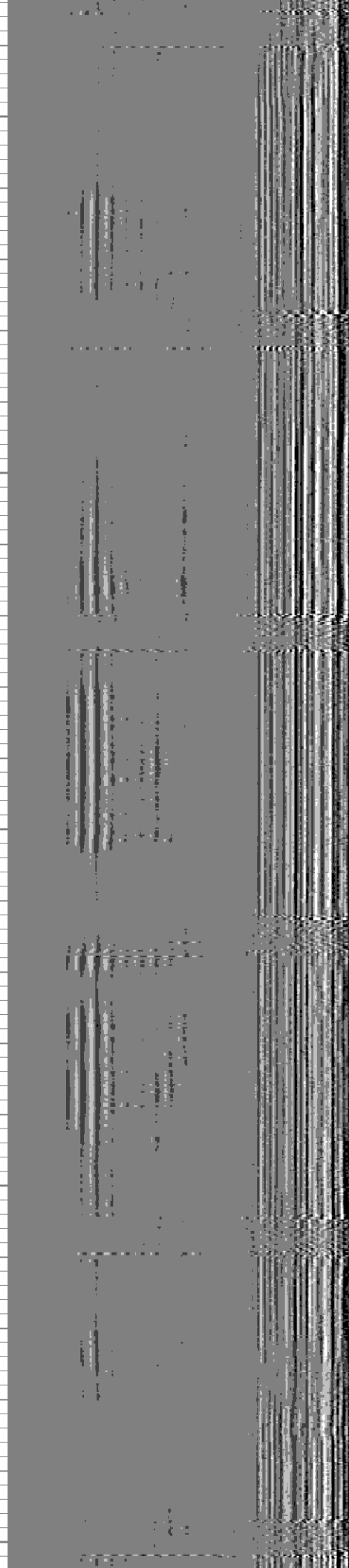
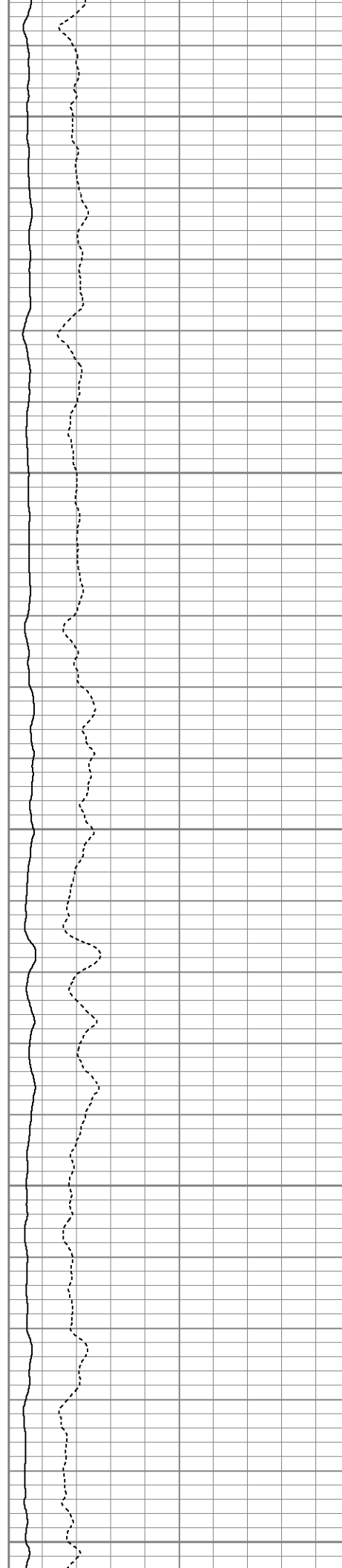
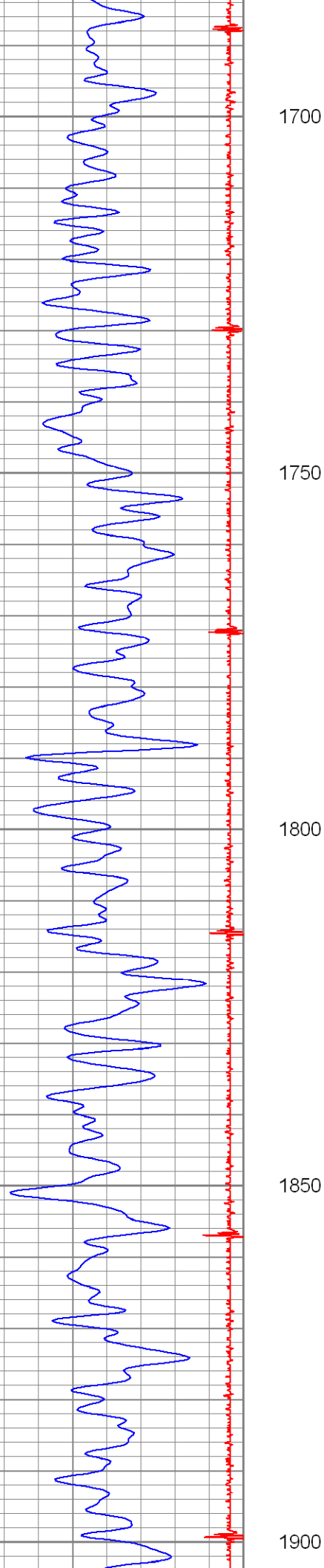
1500

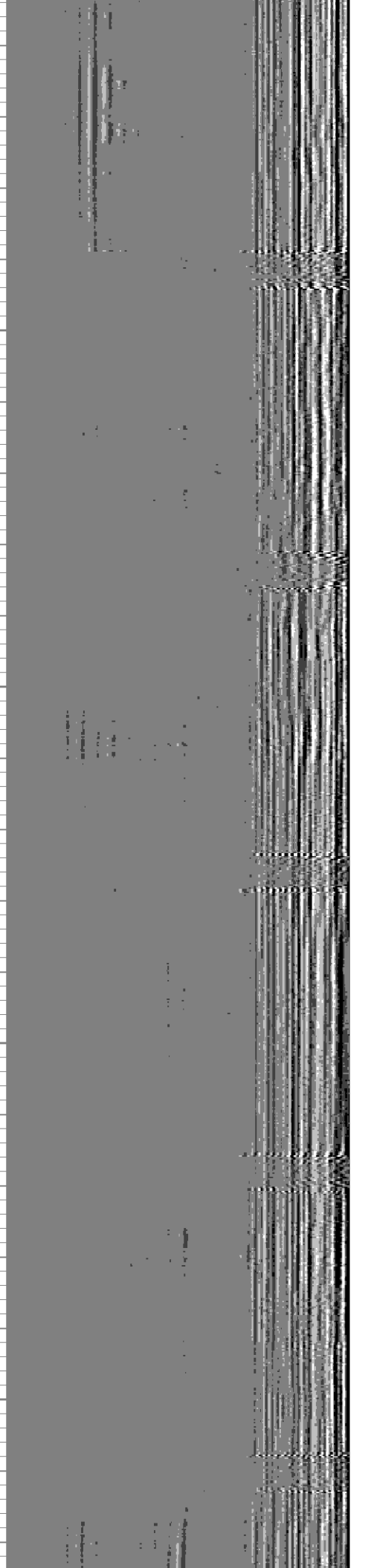
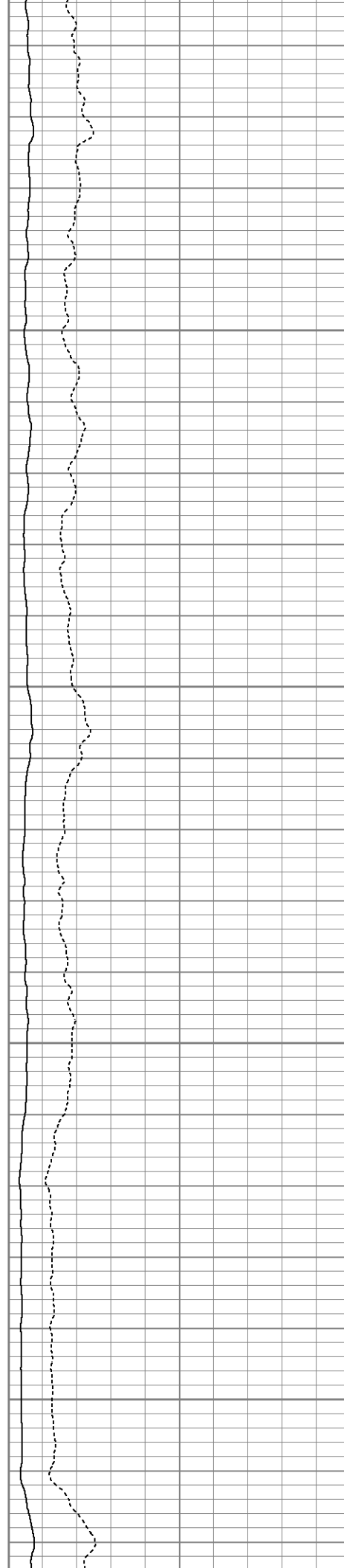
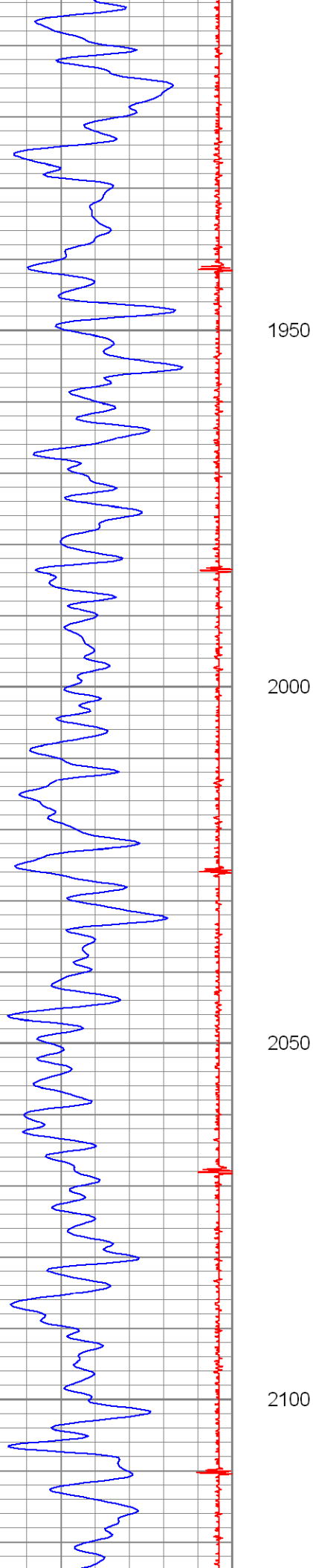
1550

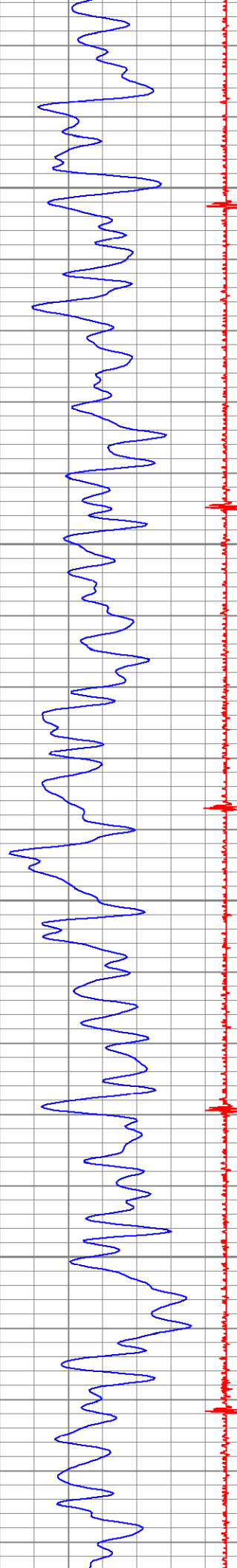
1600

1650









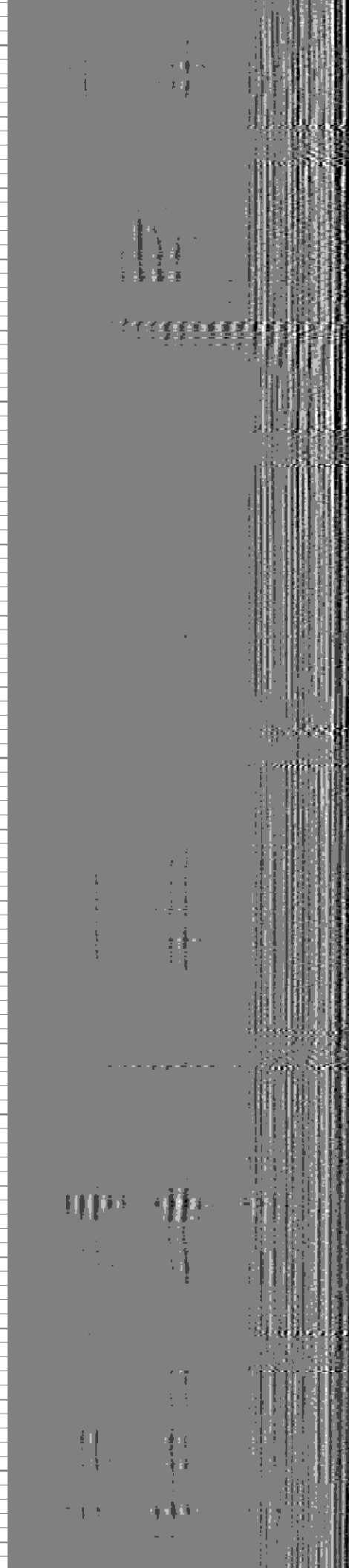
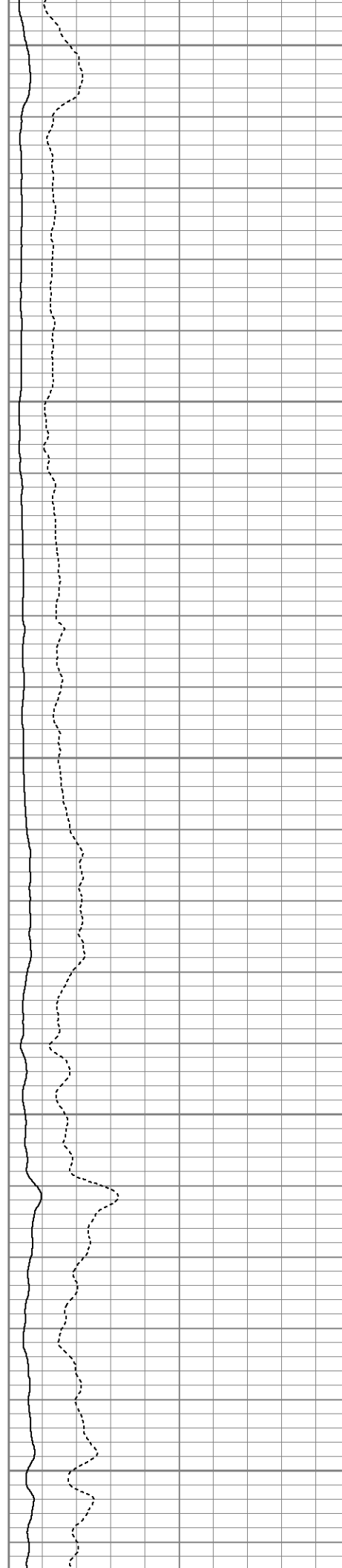
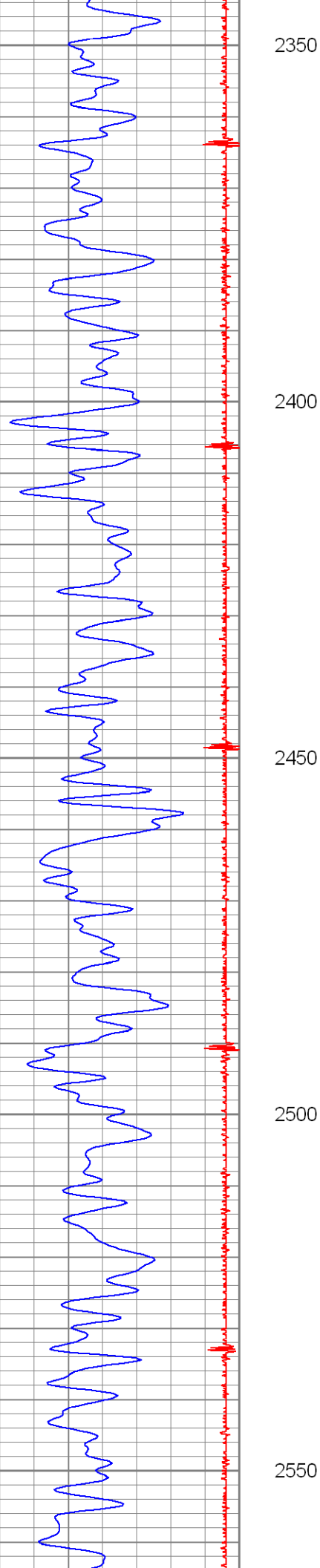
2150

2200

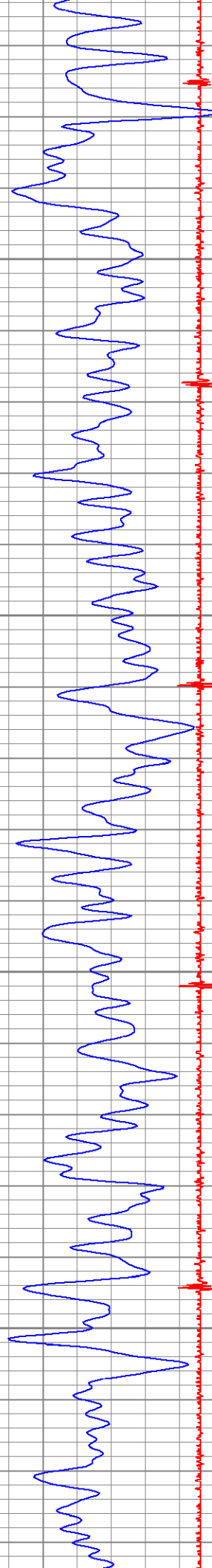
2250

2300







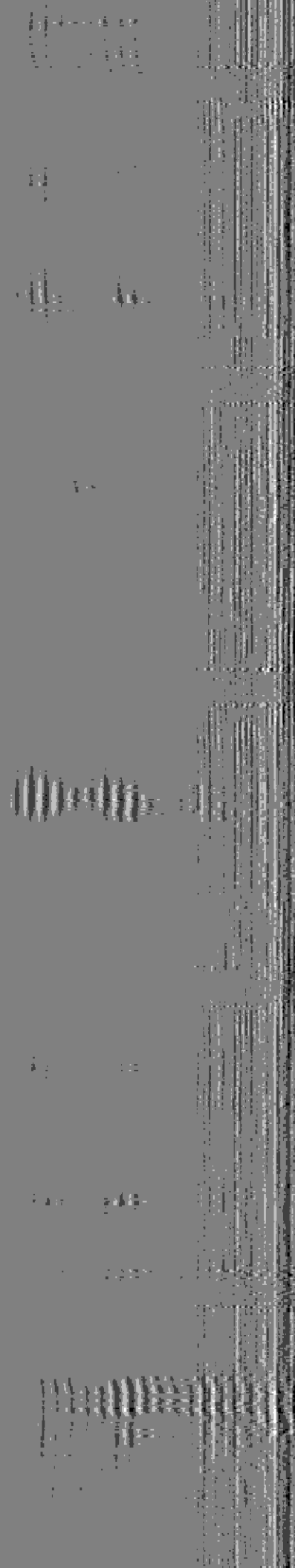


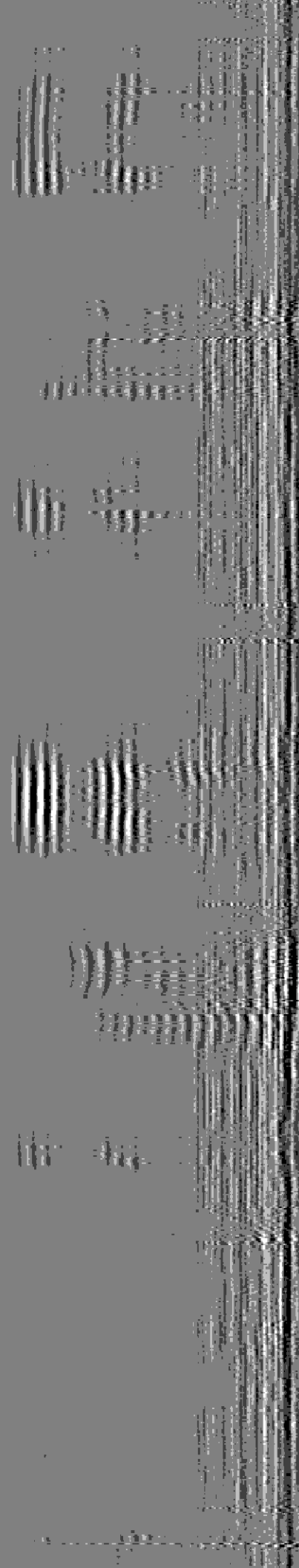
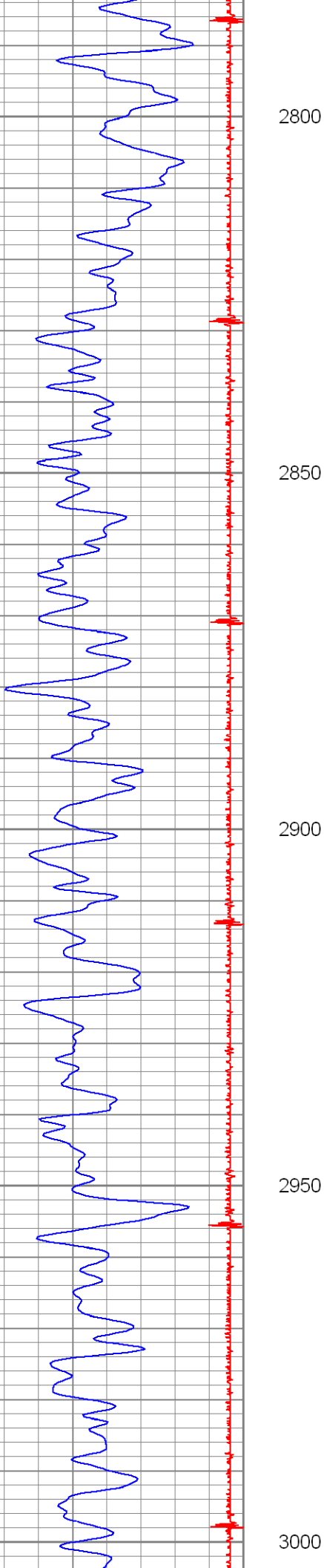
2600

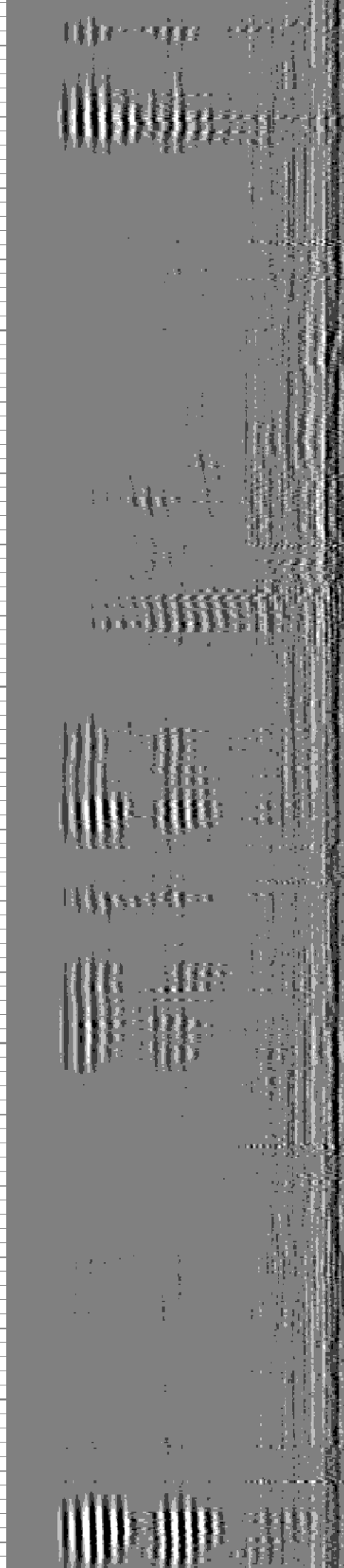
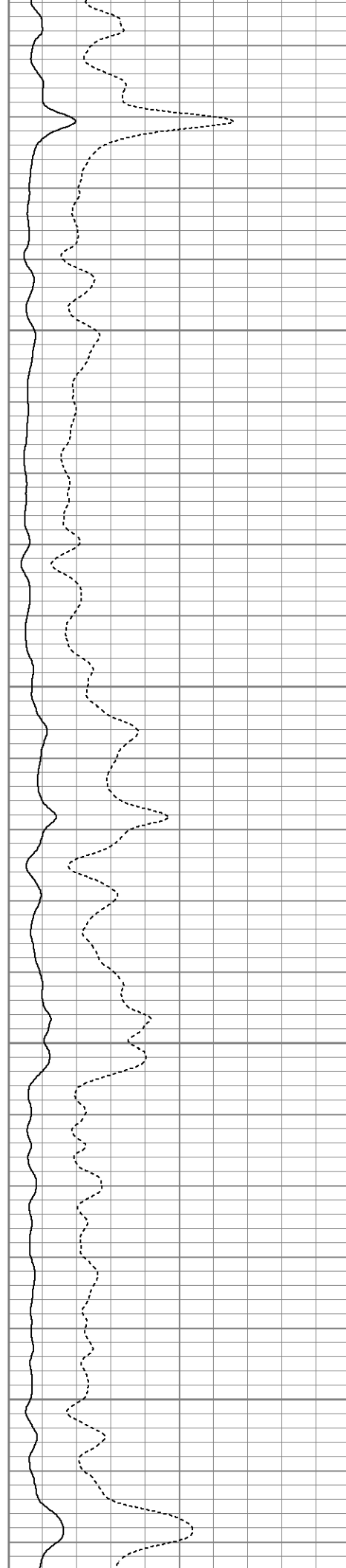
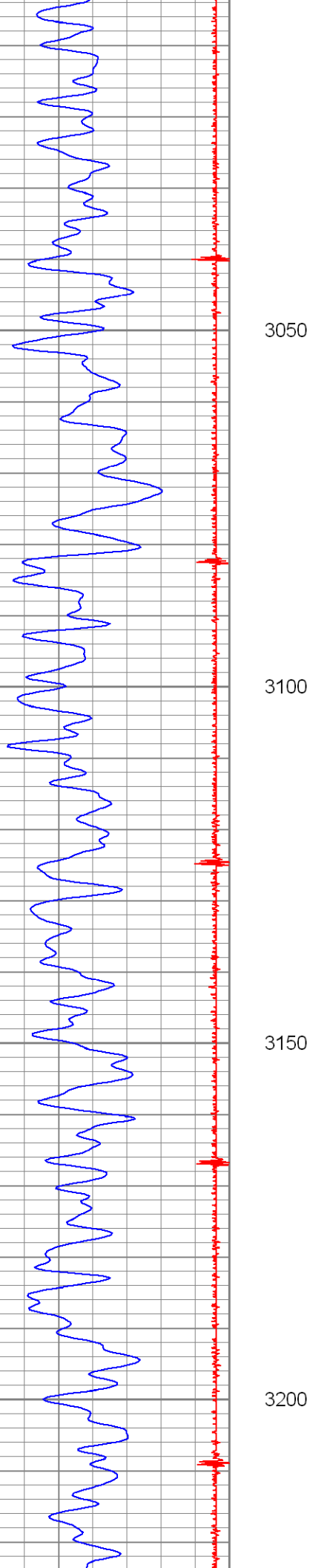
2650

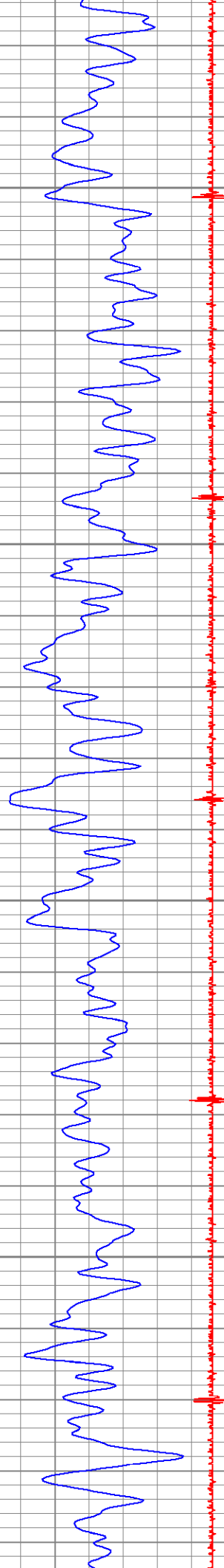
2700

2750







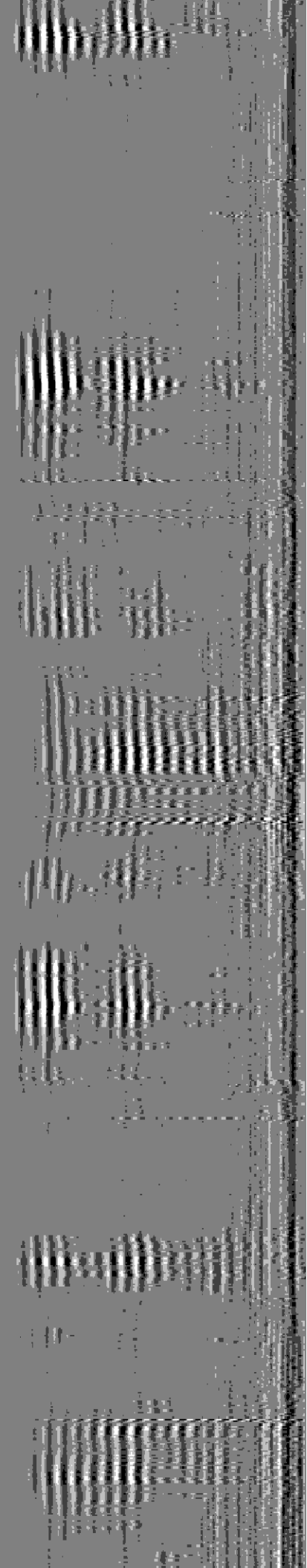
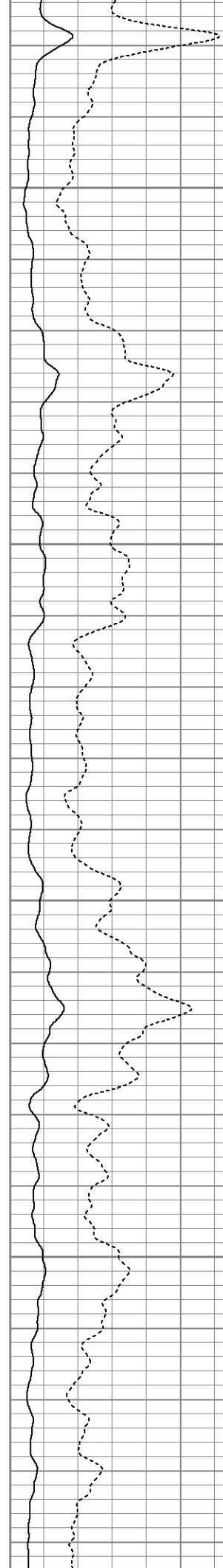


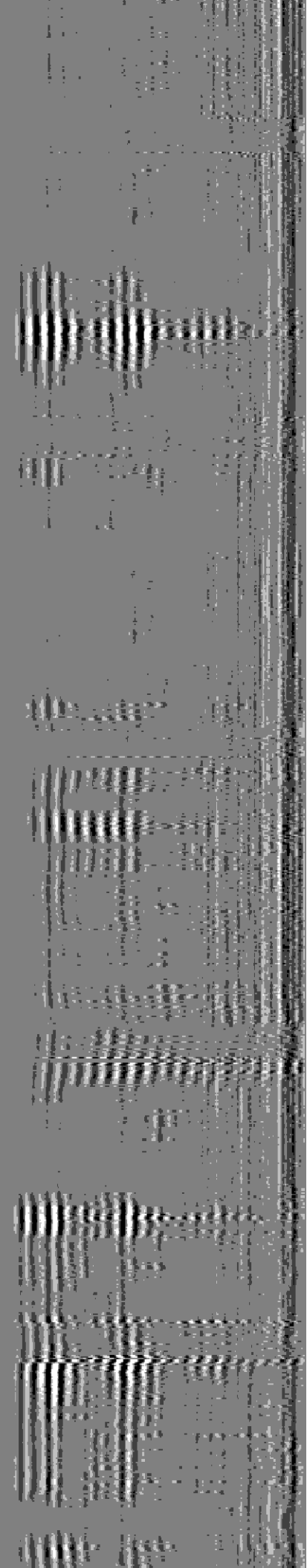
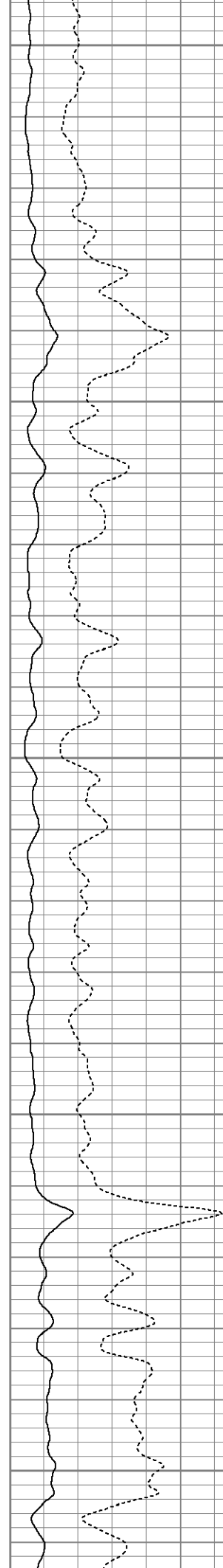
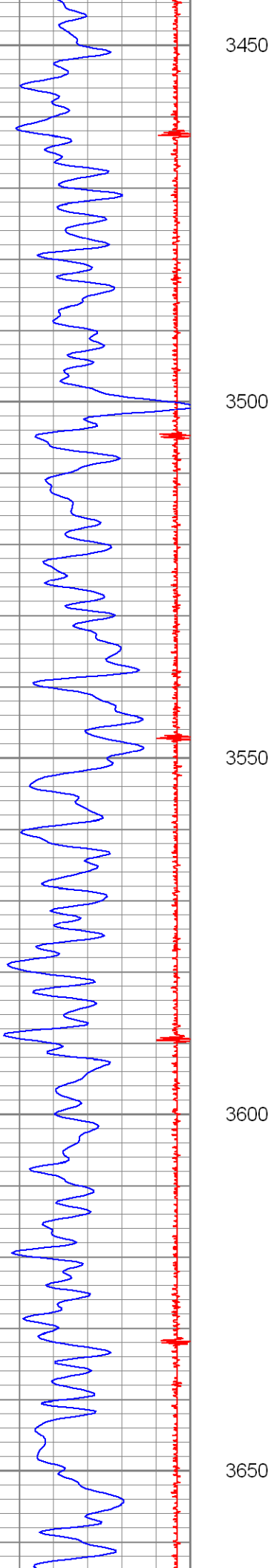
3250

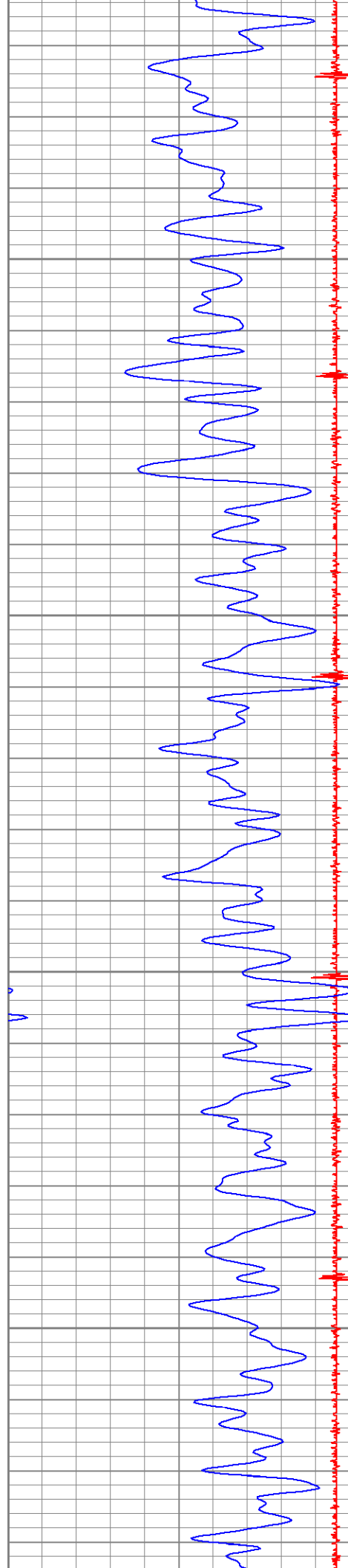
3300

3350

3400





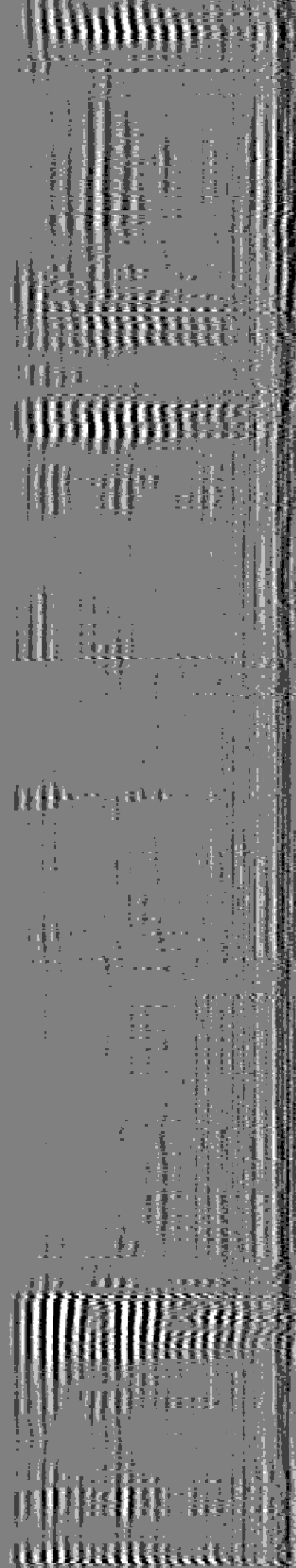
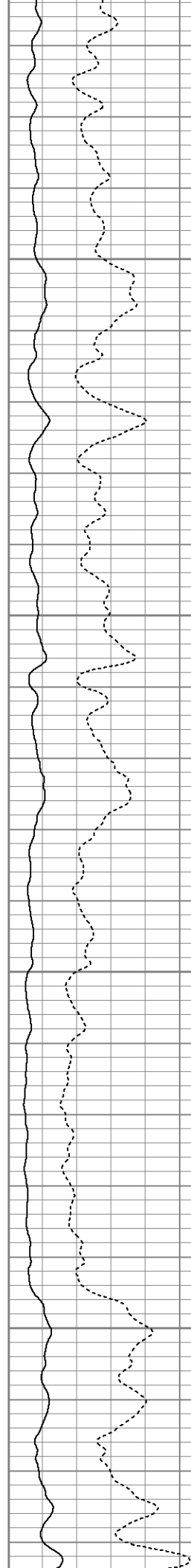


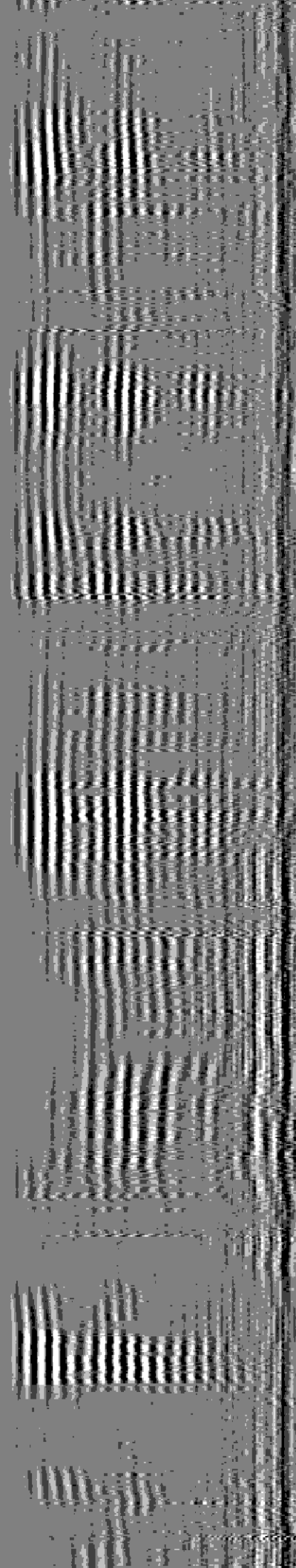
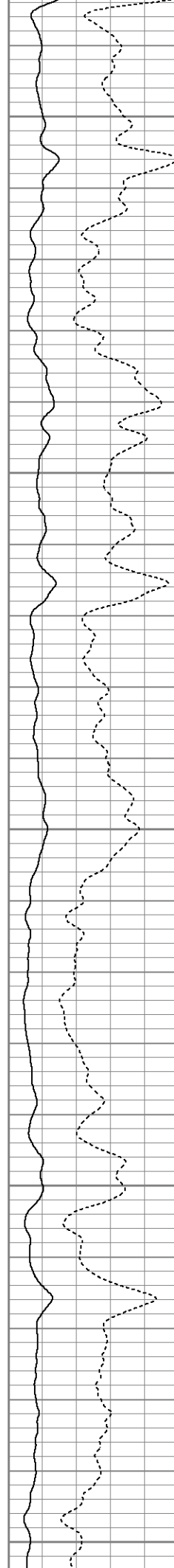
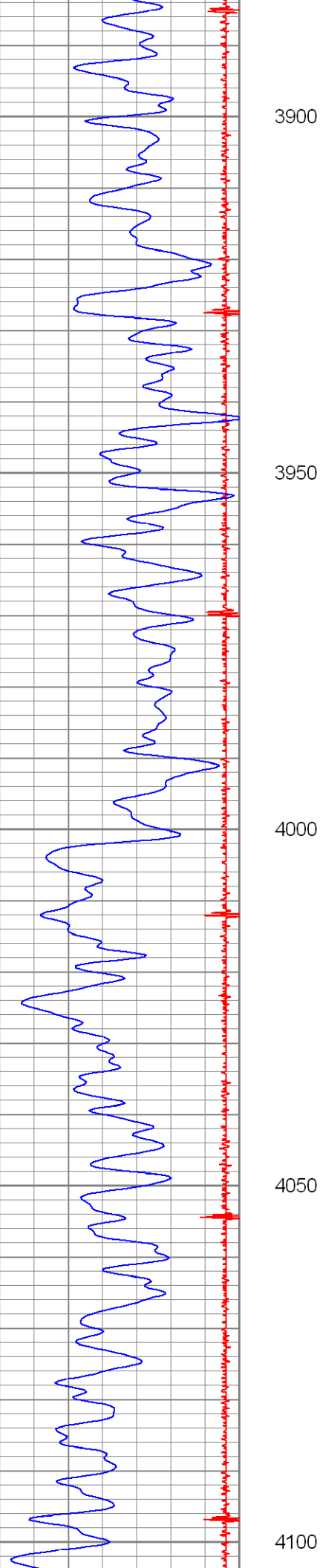
3700

3750

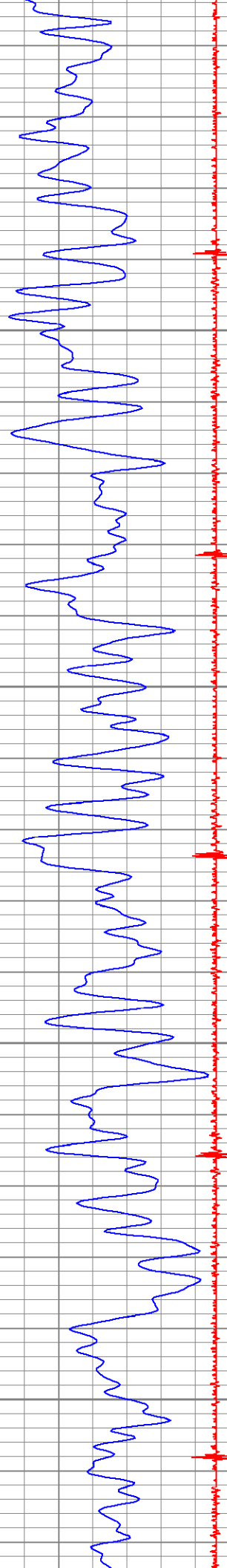
3800

3850







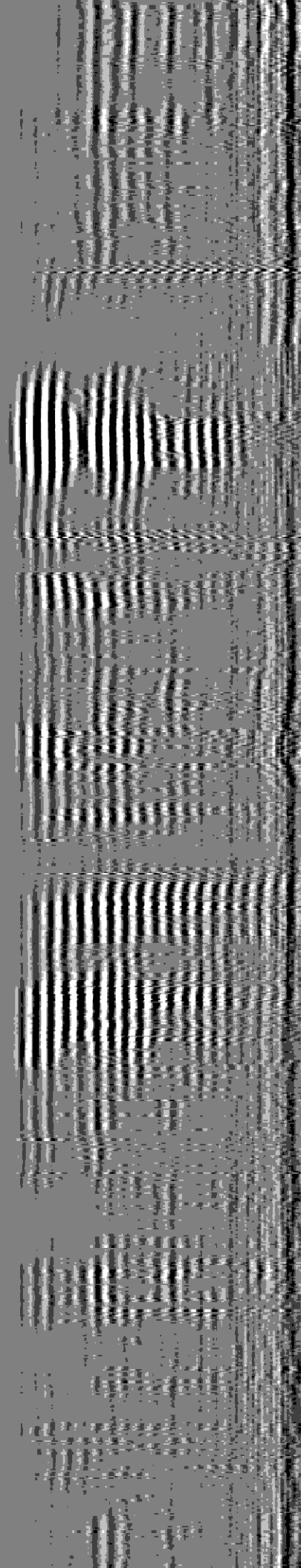
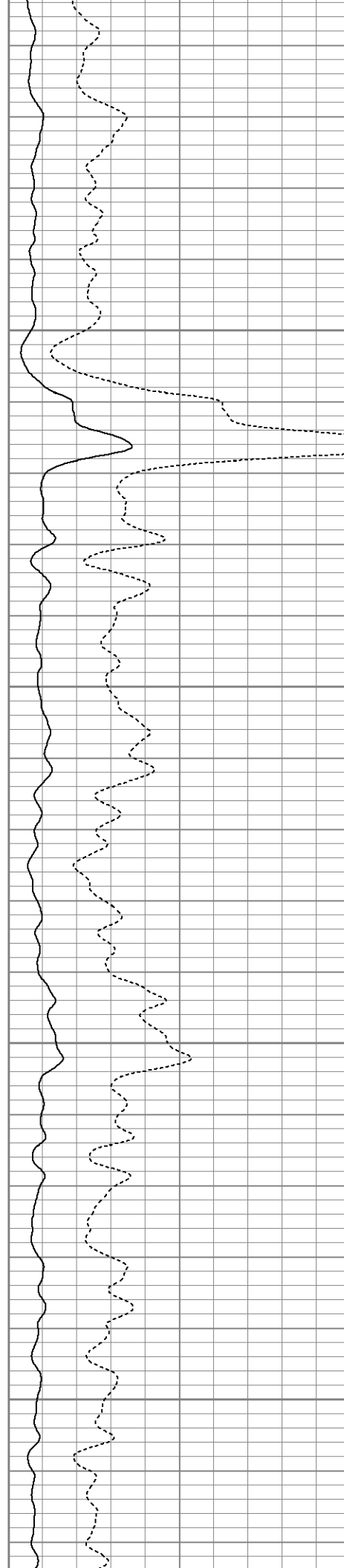


4150

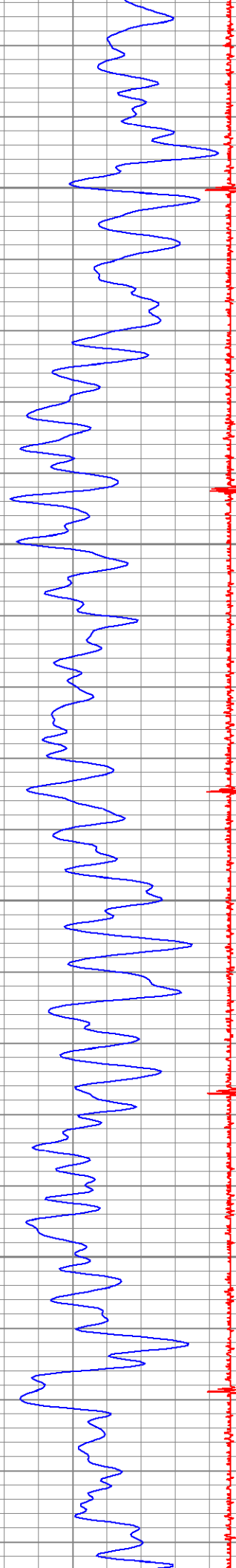
4200

4250

4300





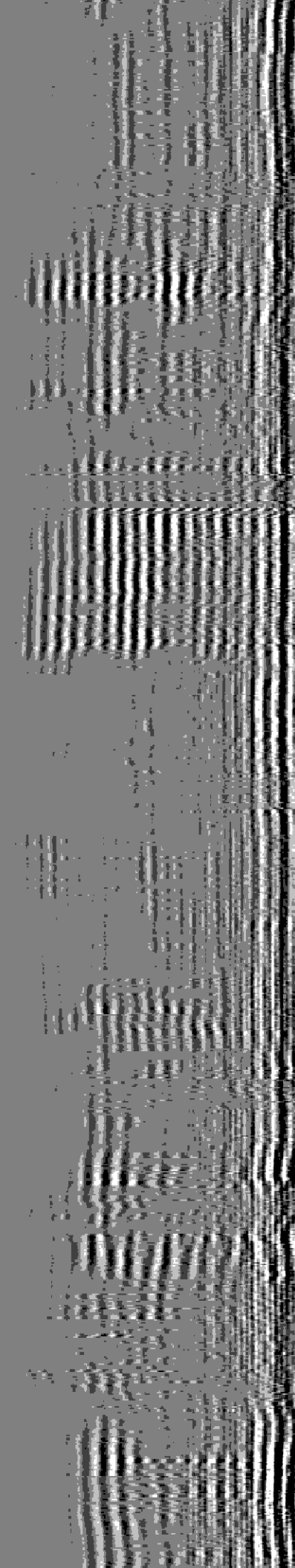
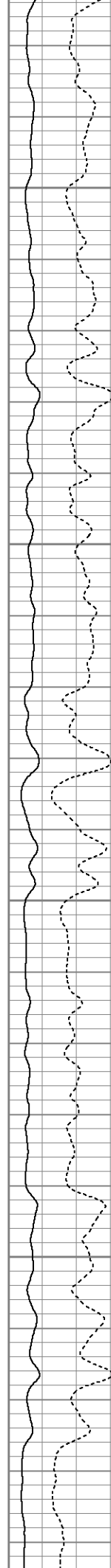


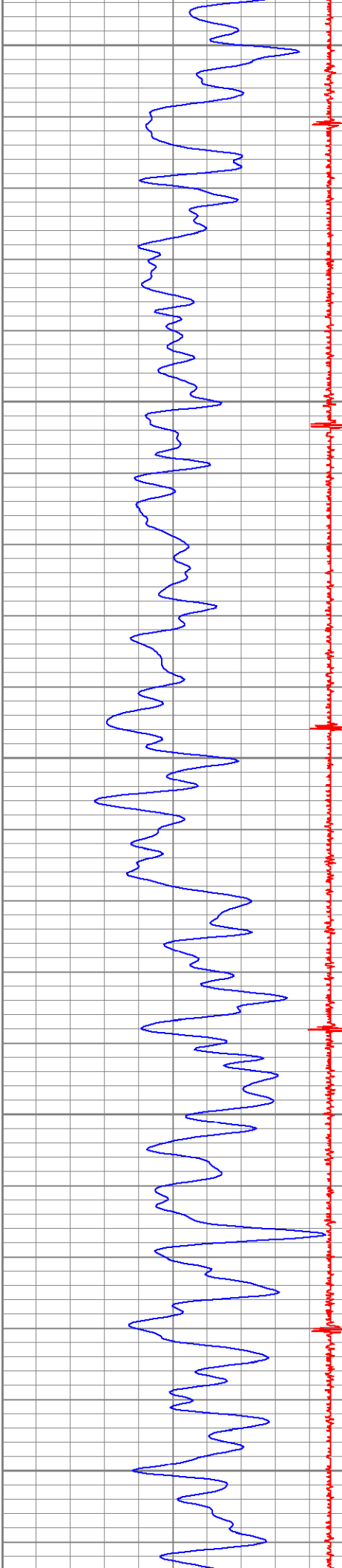
4350

4400

4450

4500





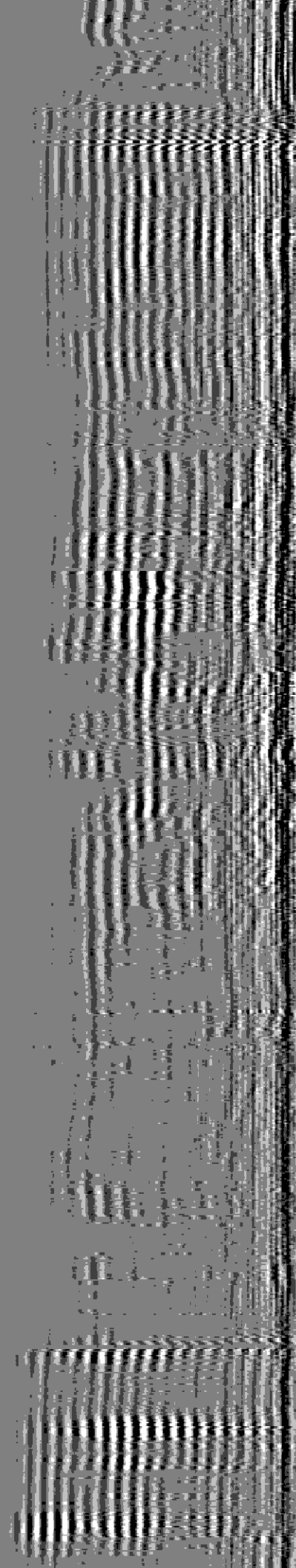
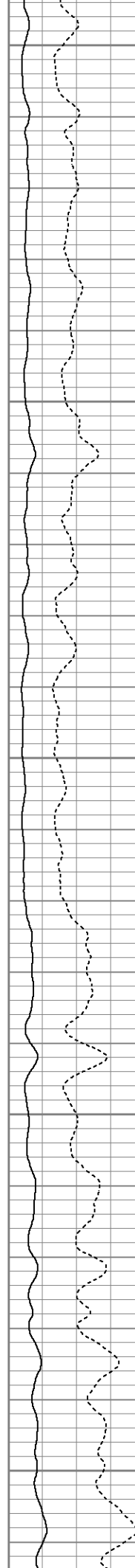
4550

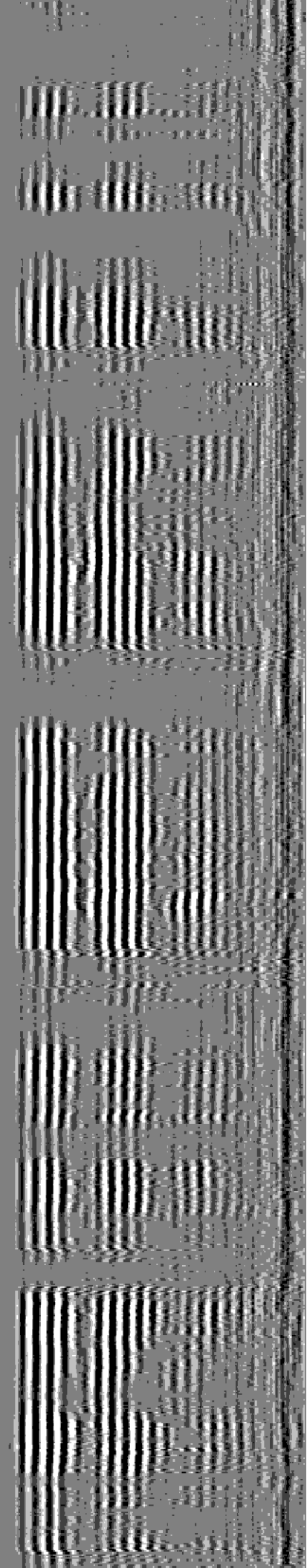
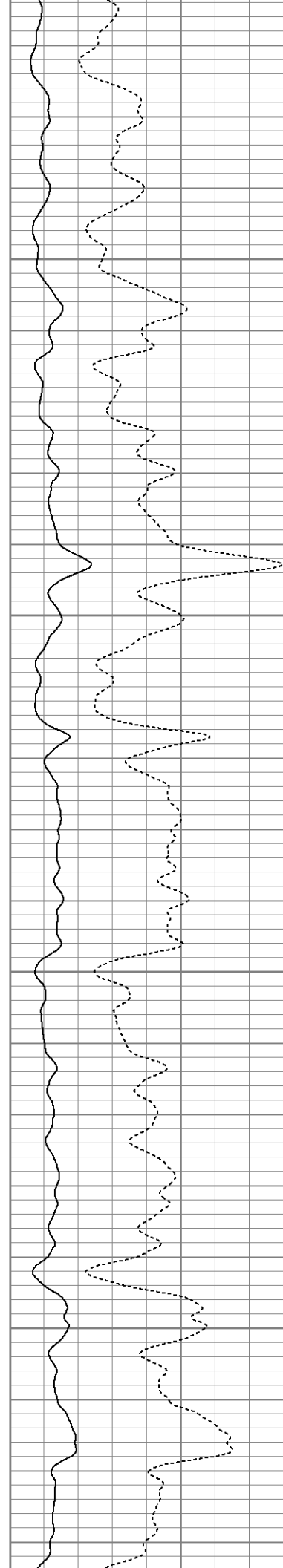
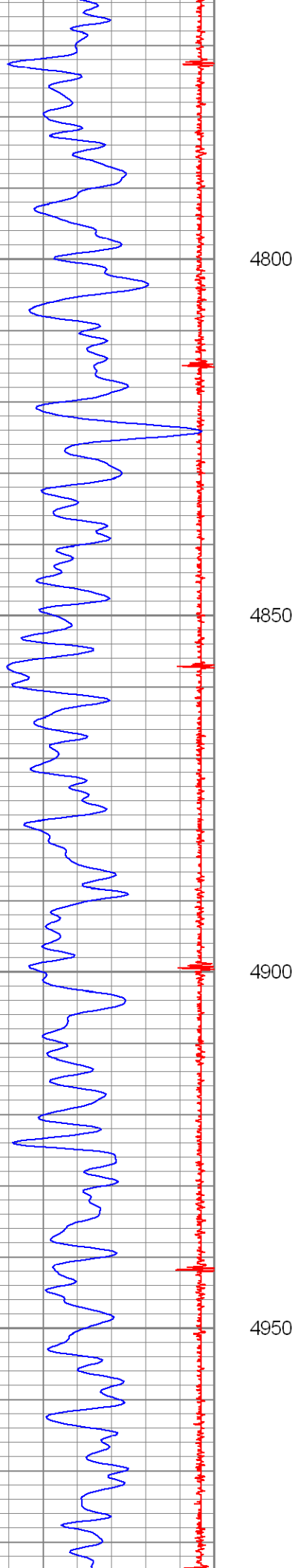
4600

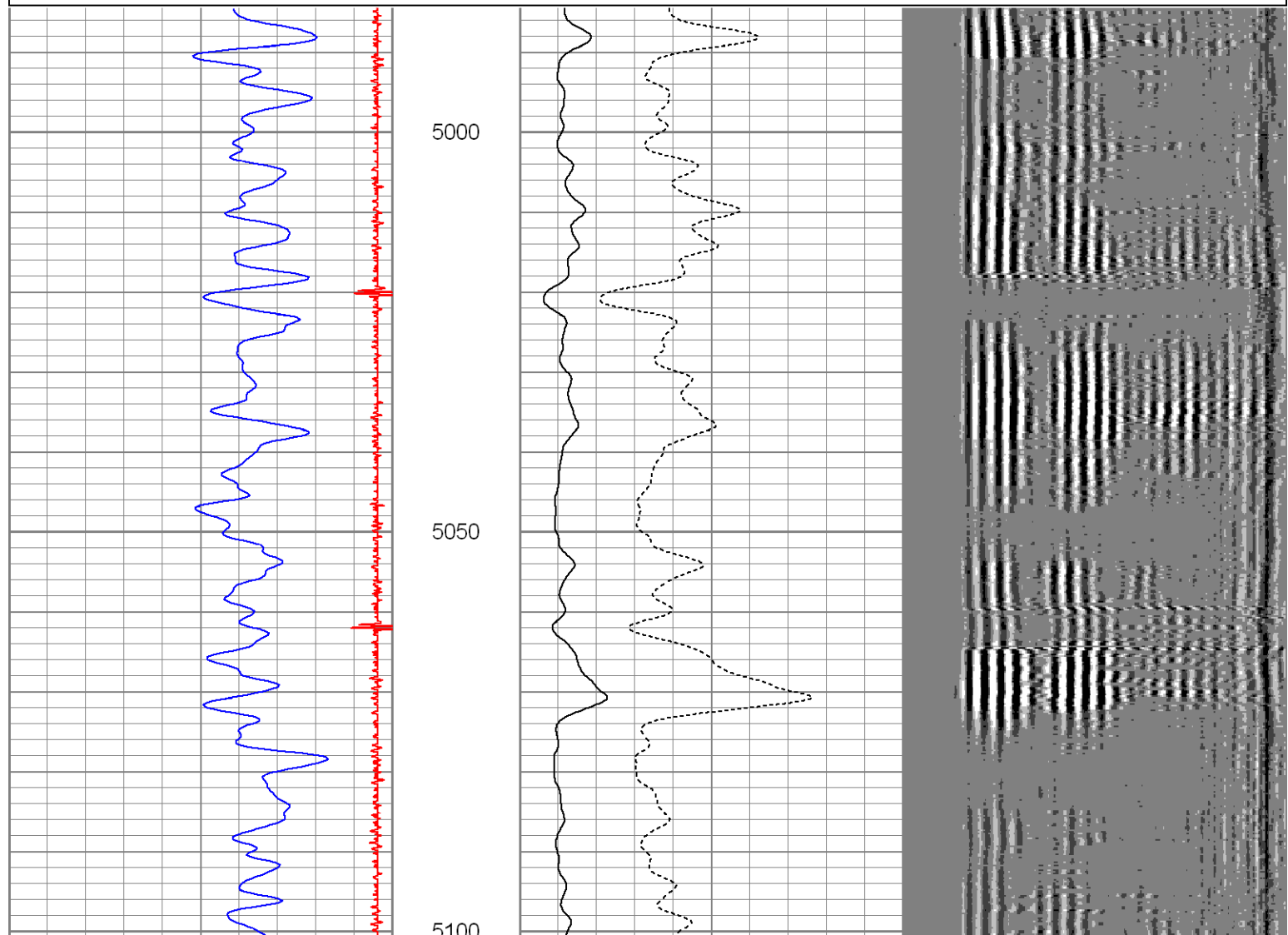
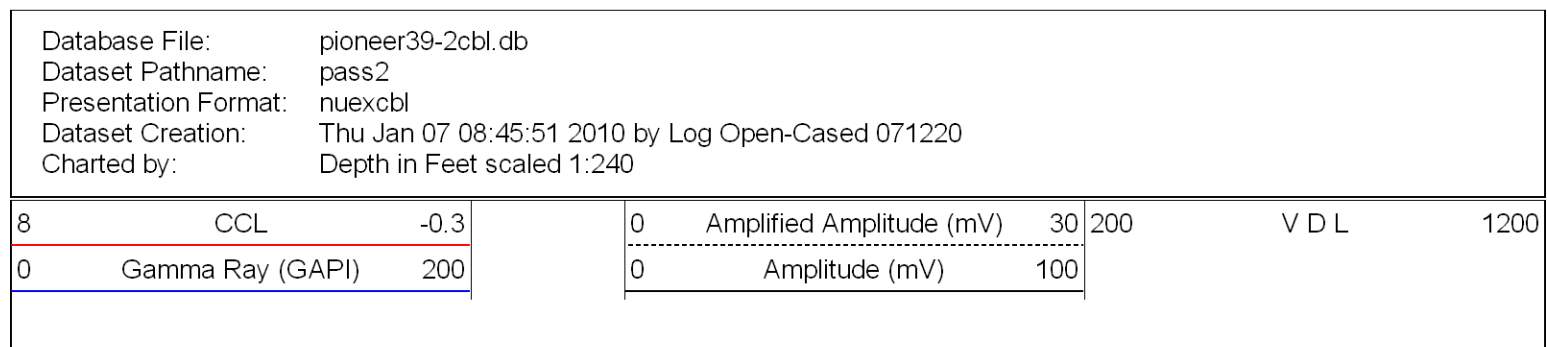
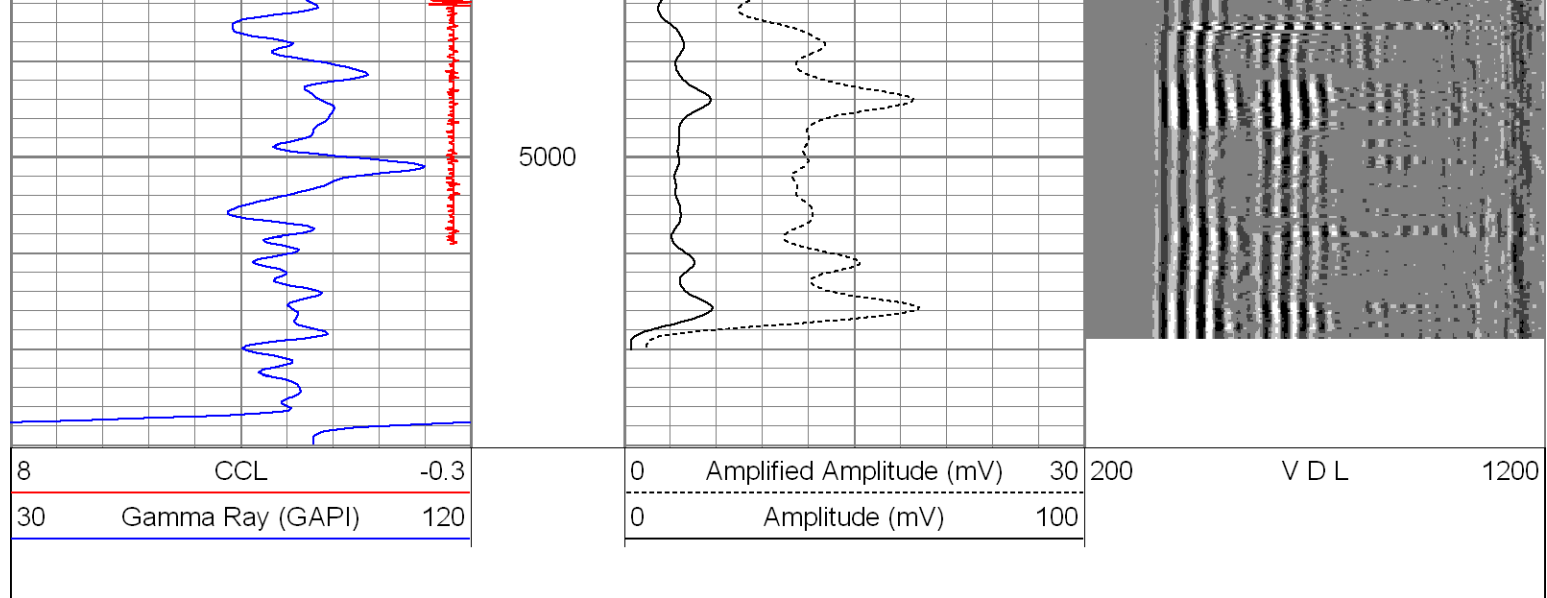
4650

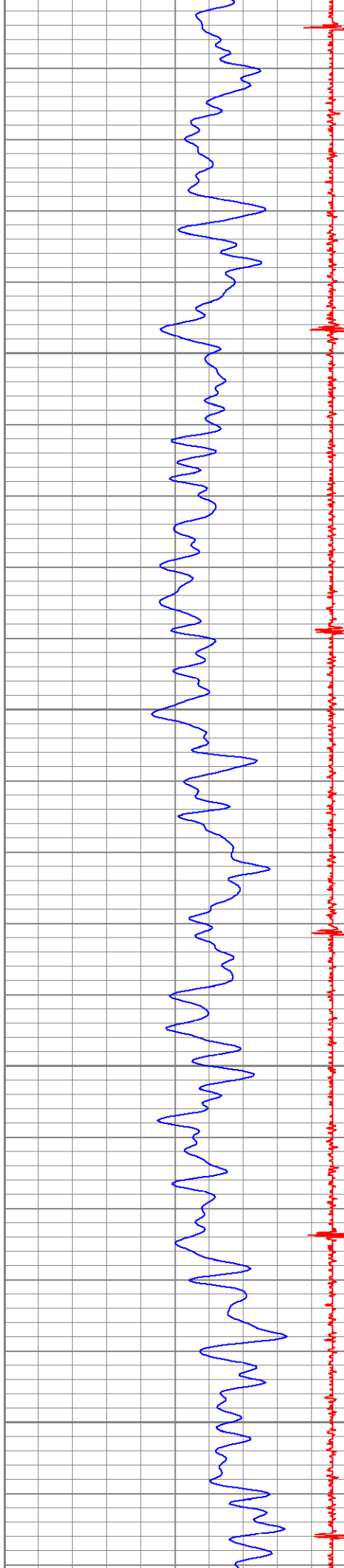
4700

4750









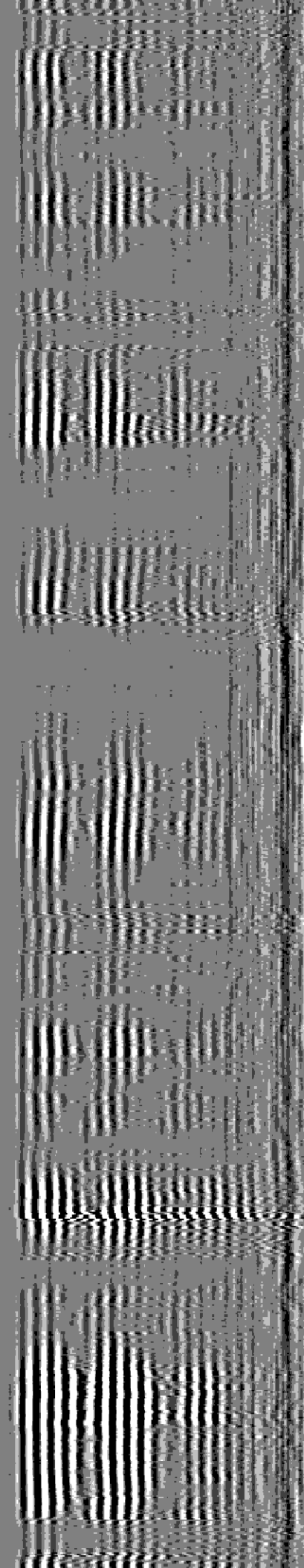
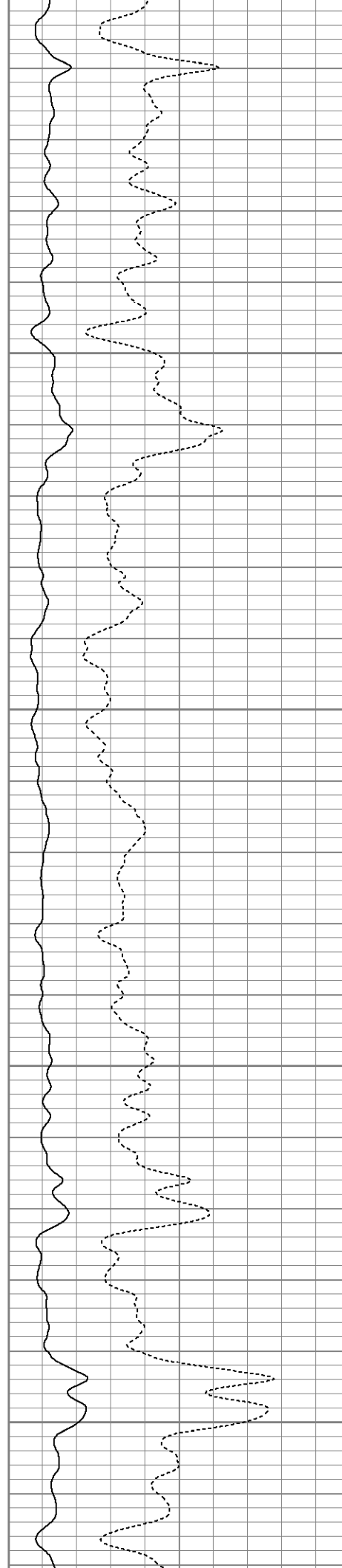
5100

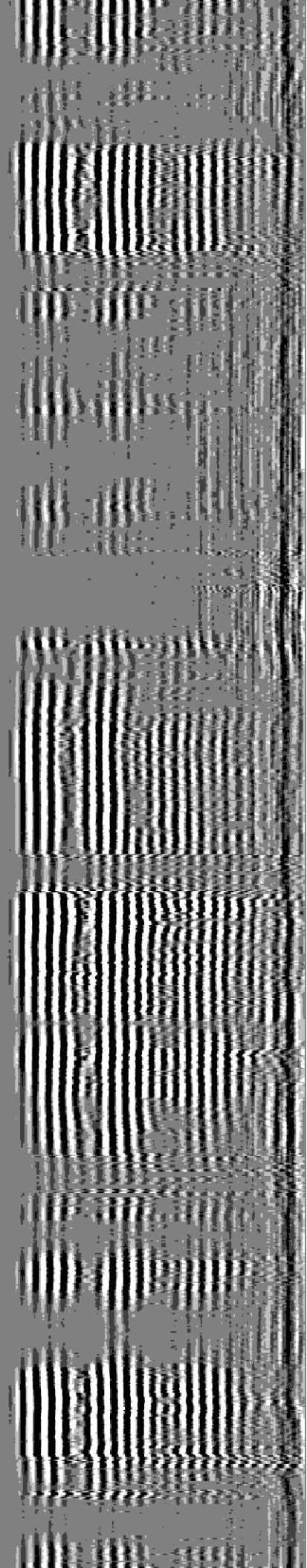
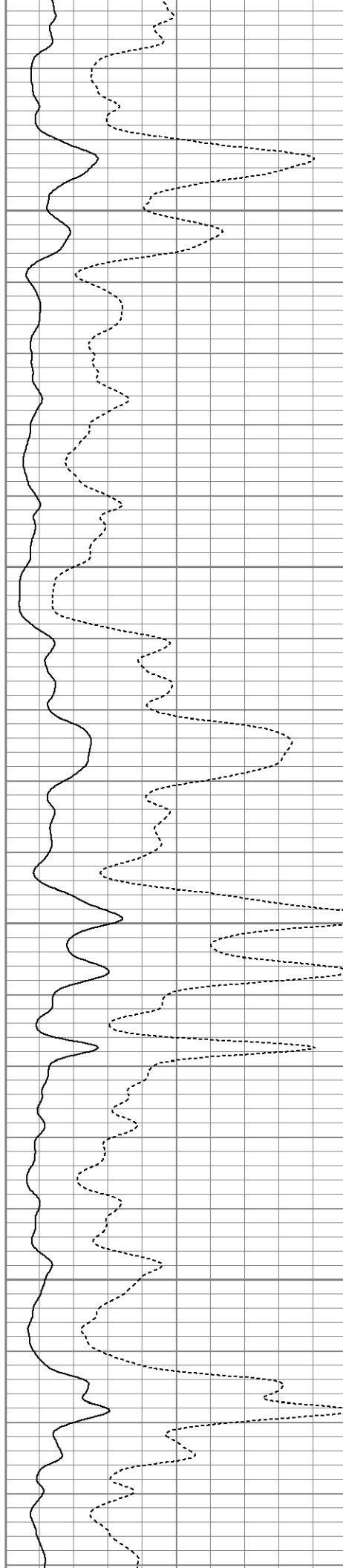
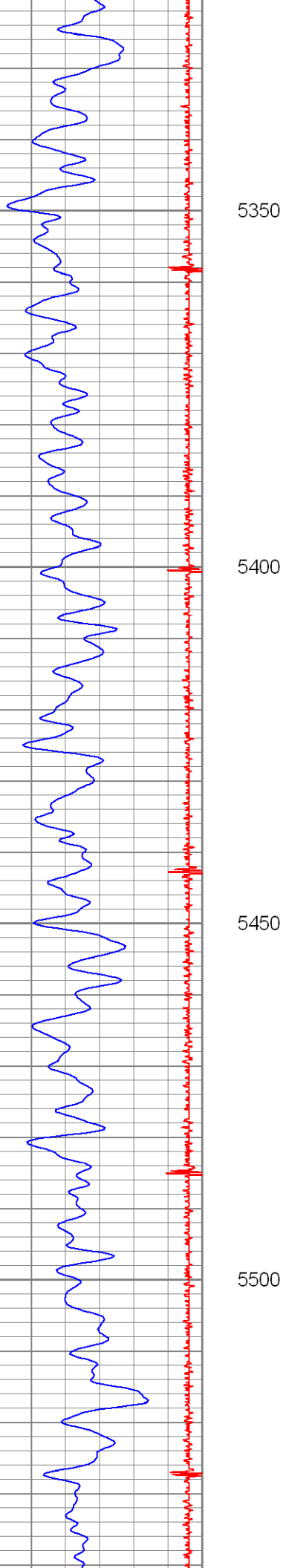
5150

5200

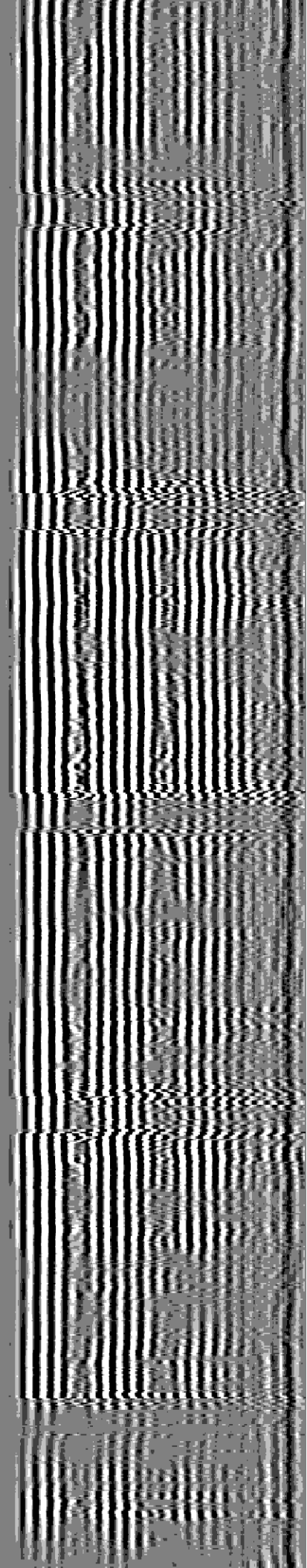
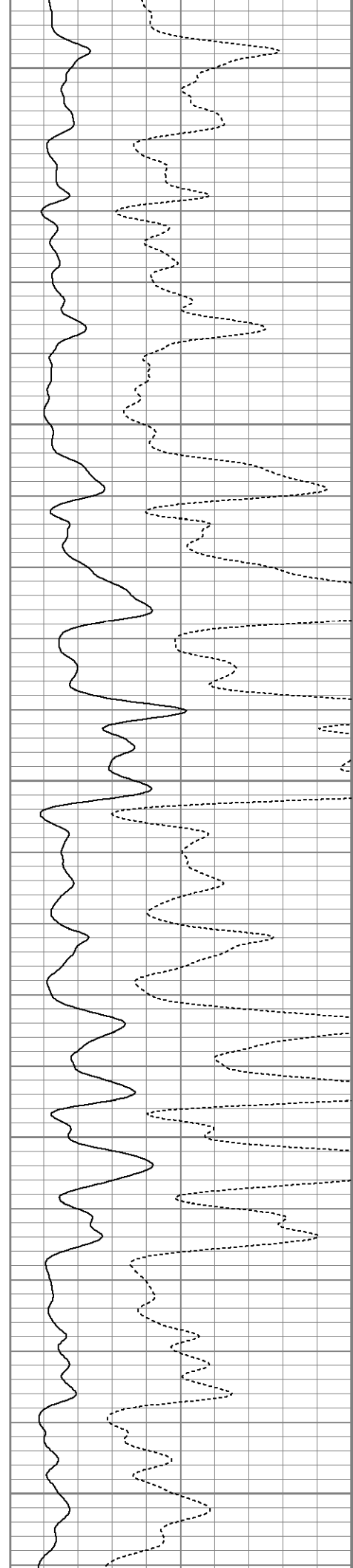
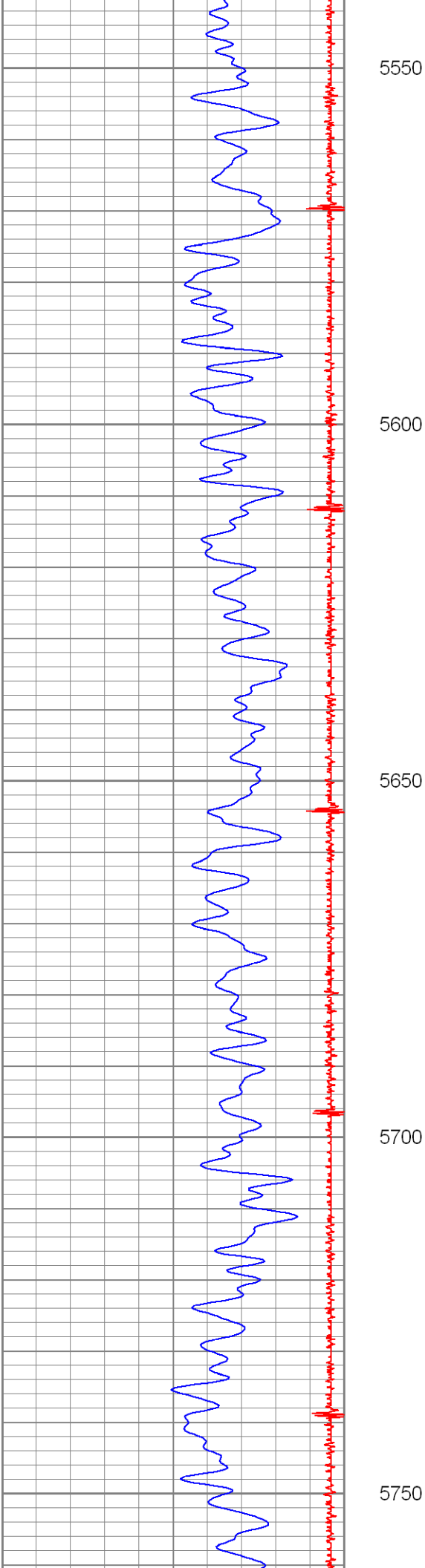
5250

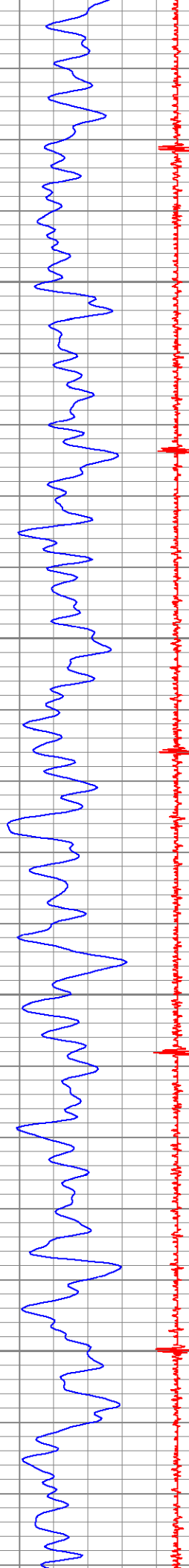
5300









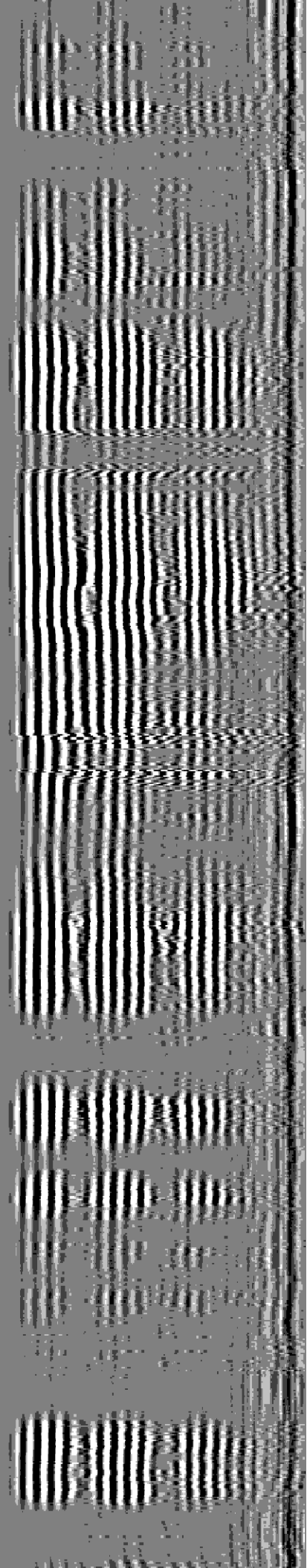
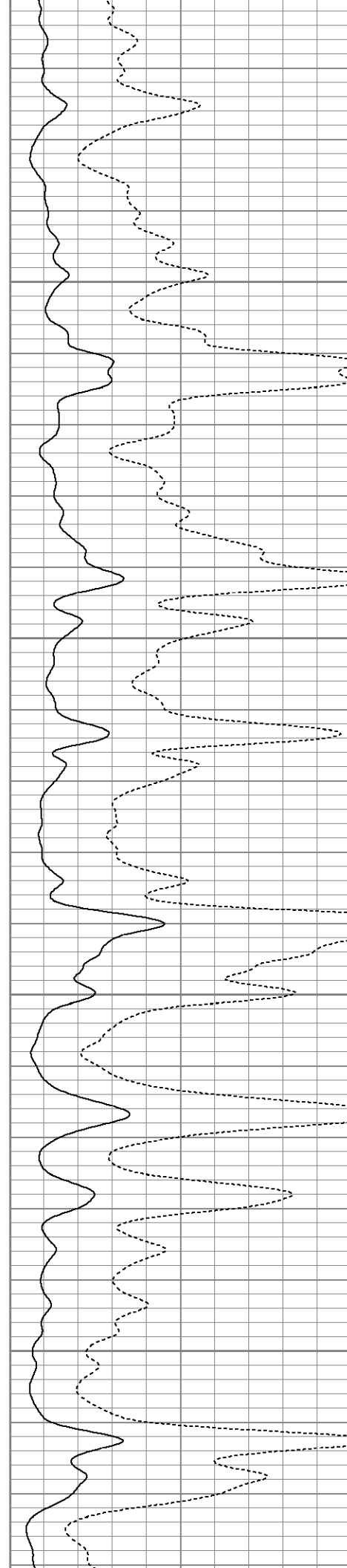


5800

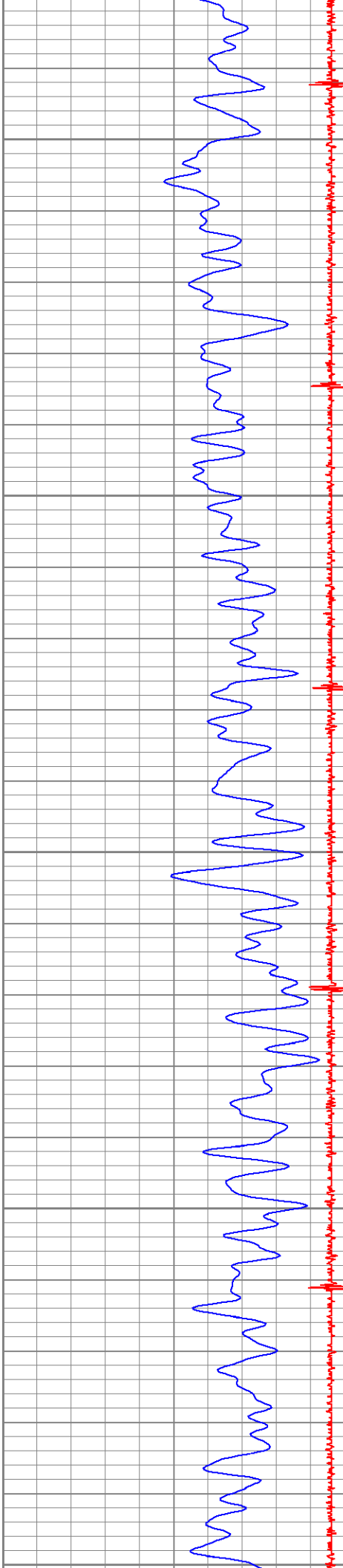
5850

5900

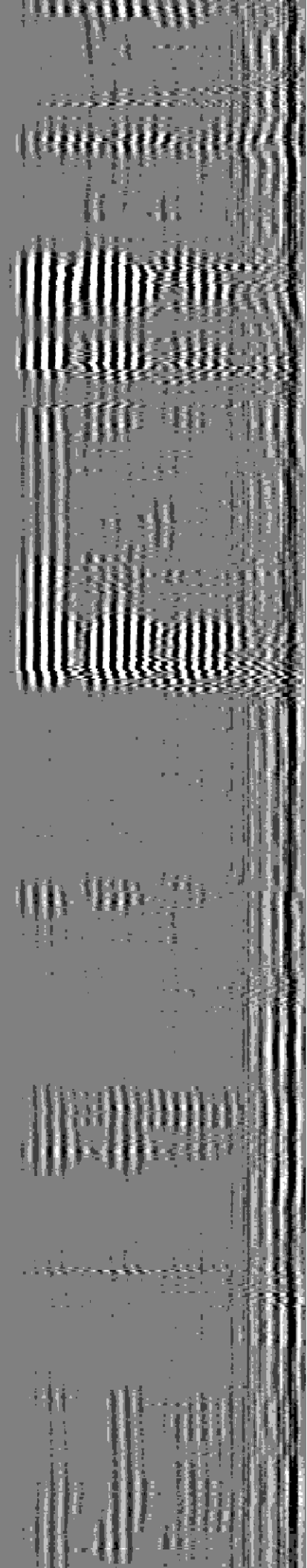
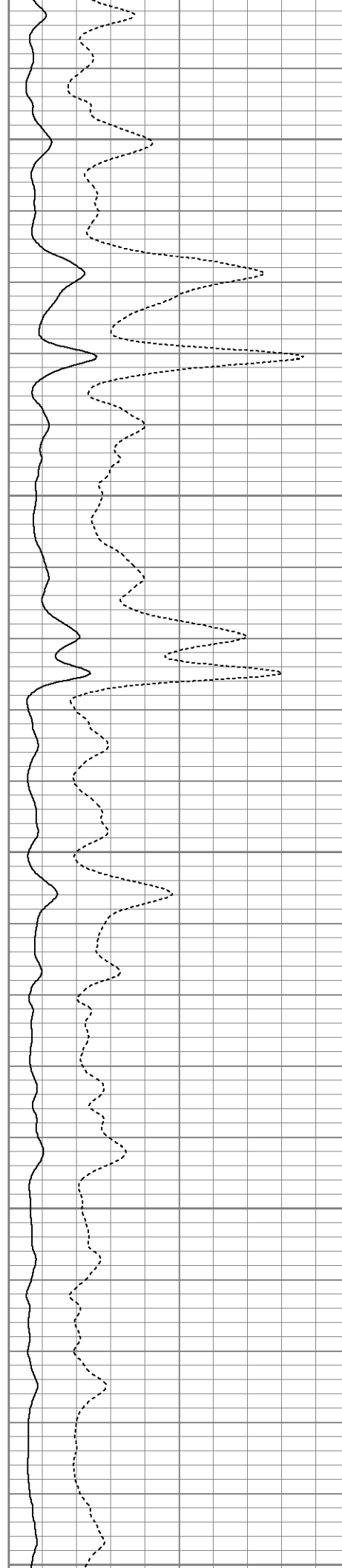
5950

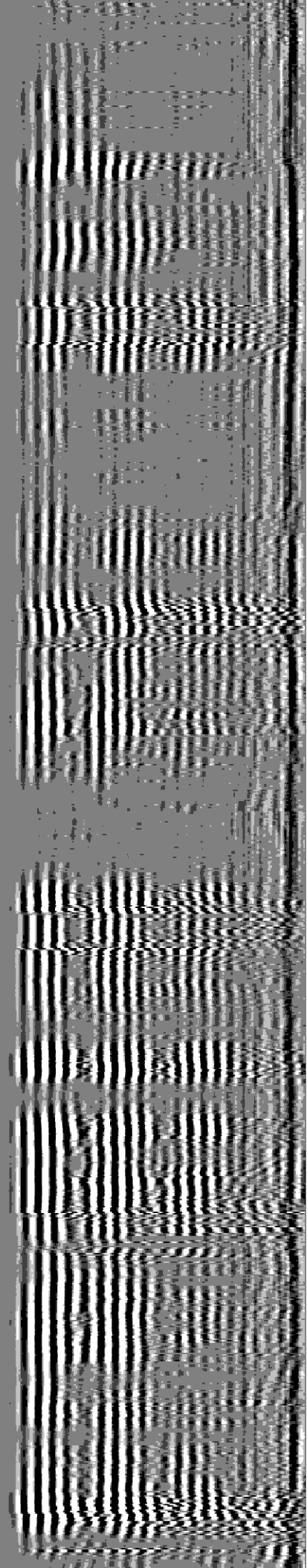
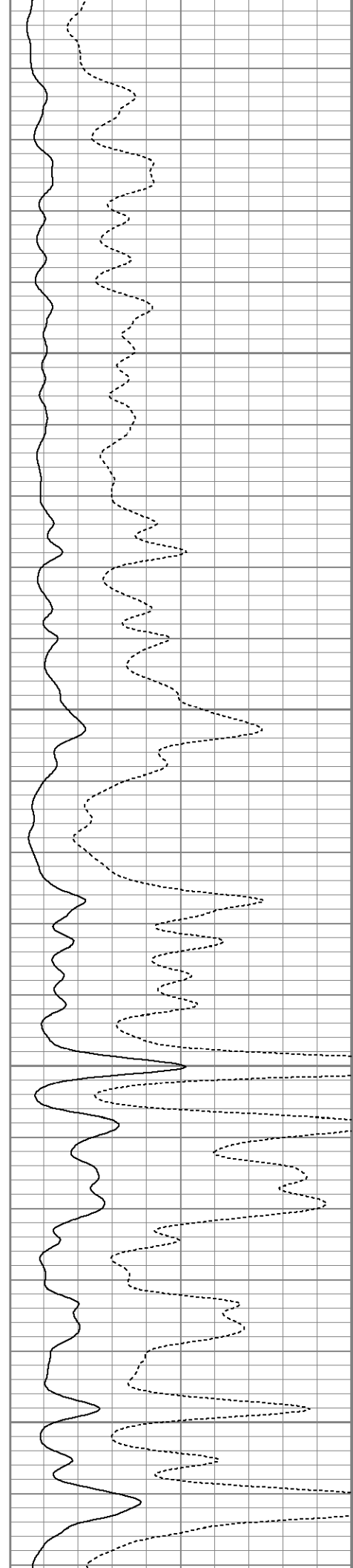
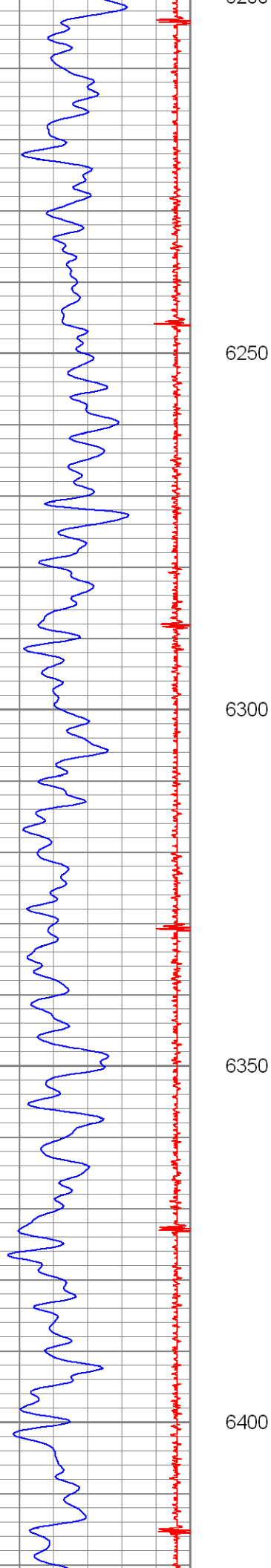


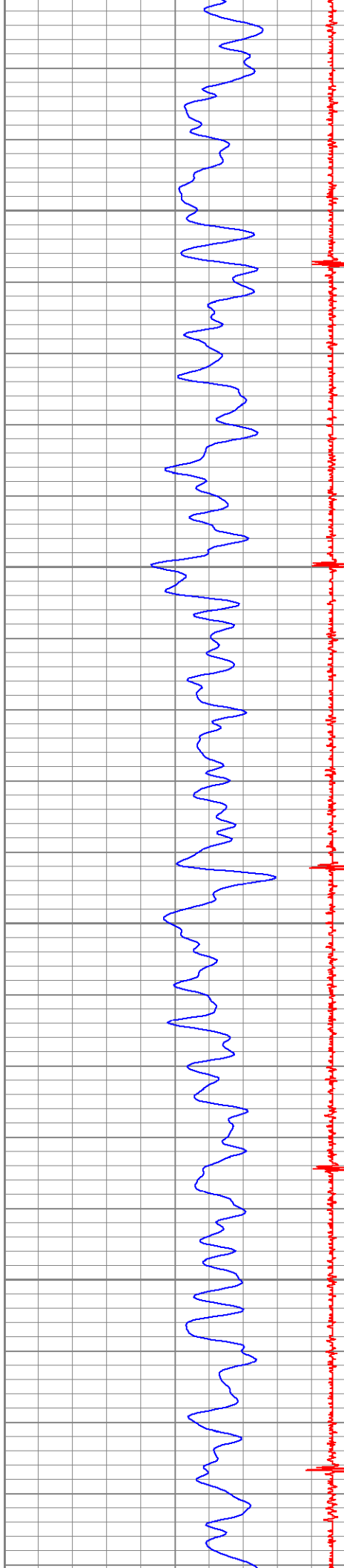




6000  
6050  
6100  
6150  
6200





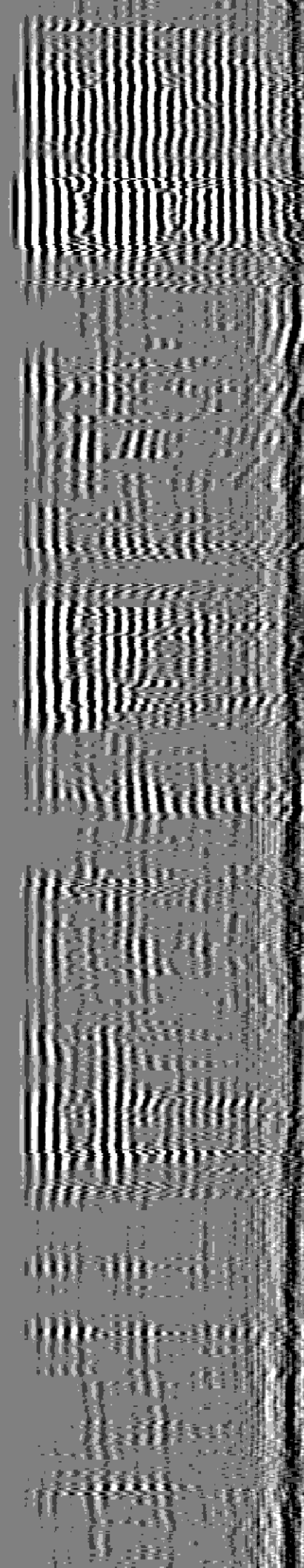
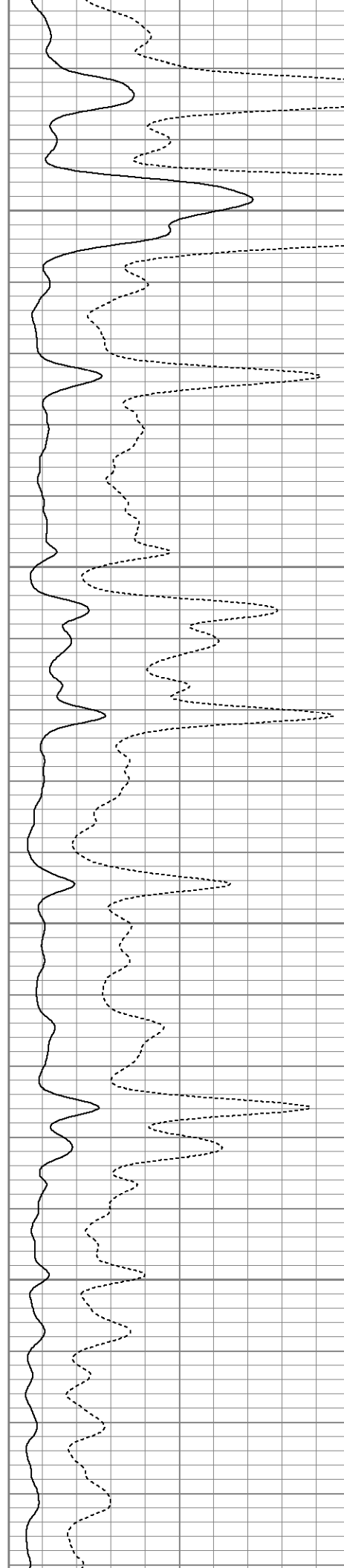


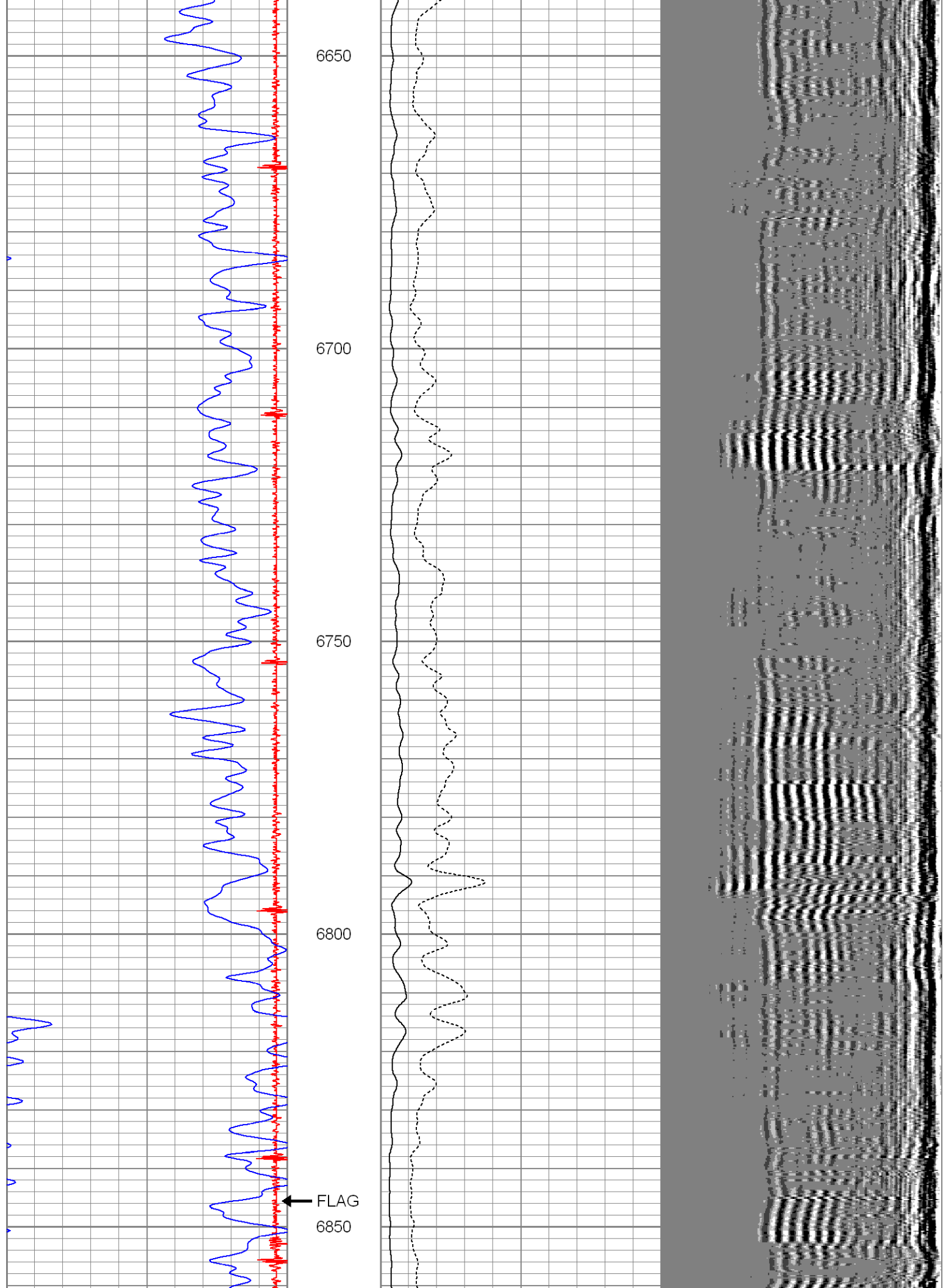
6450

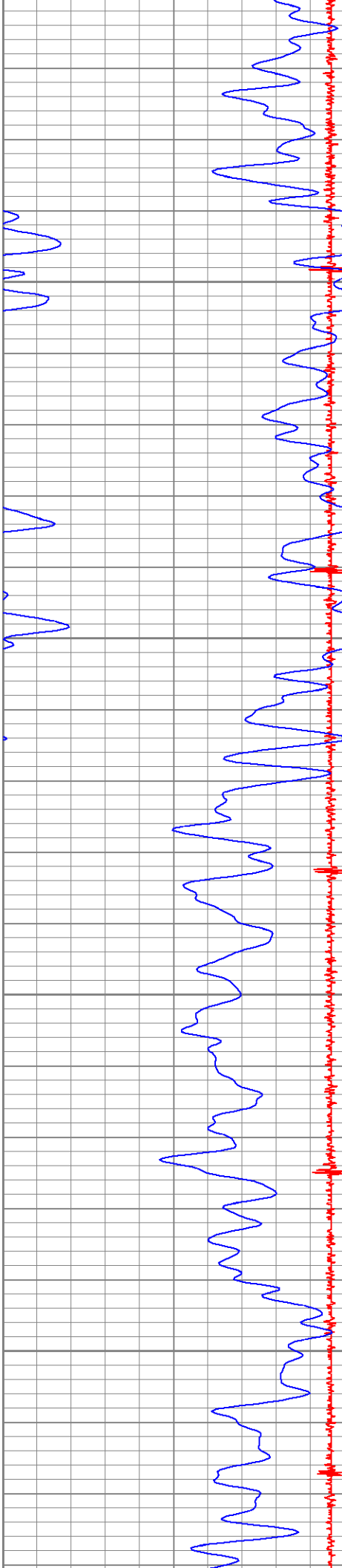
6500

6550

6600





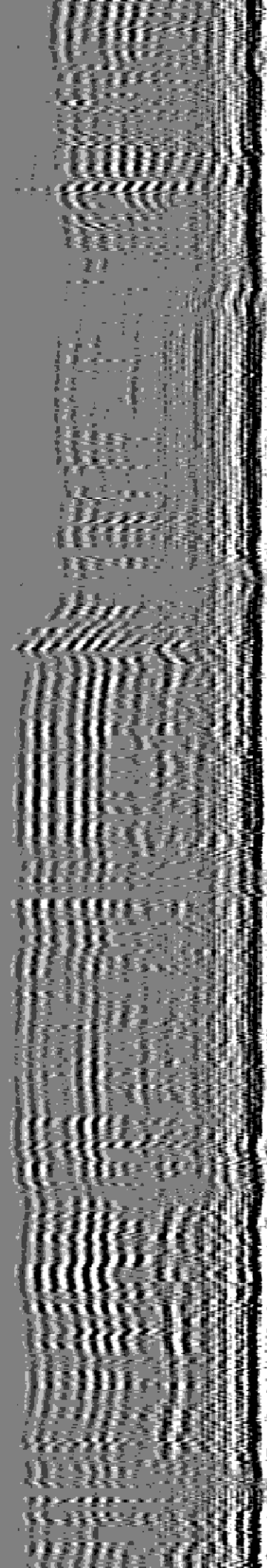
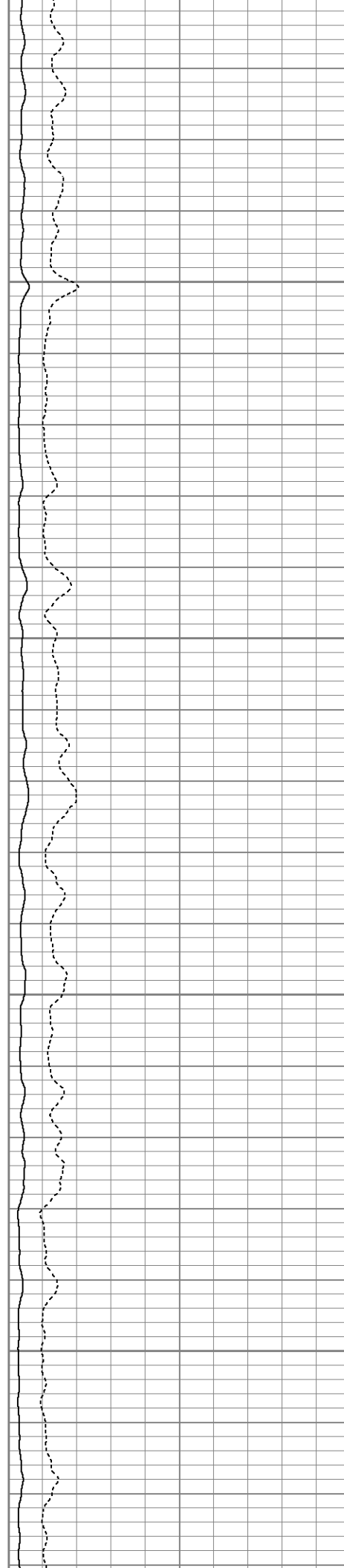


6900

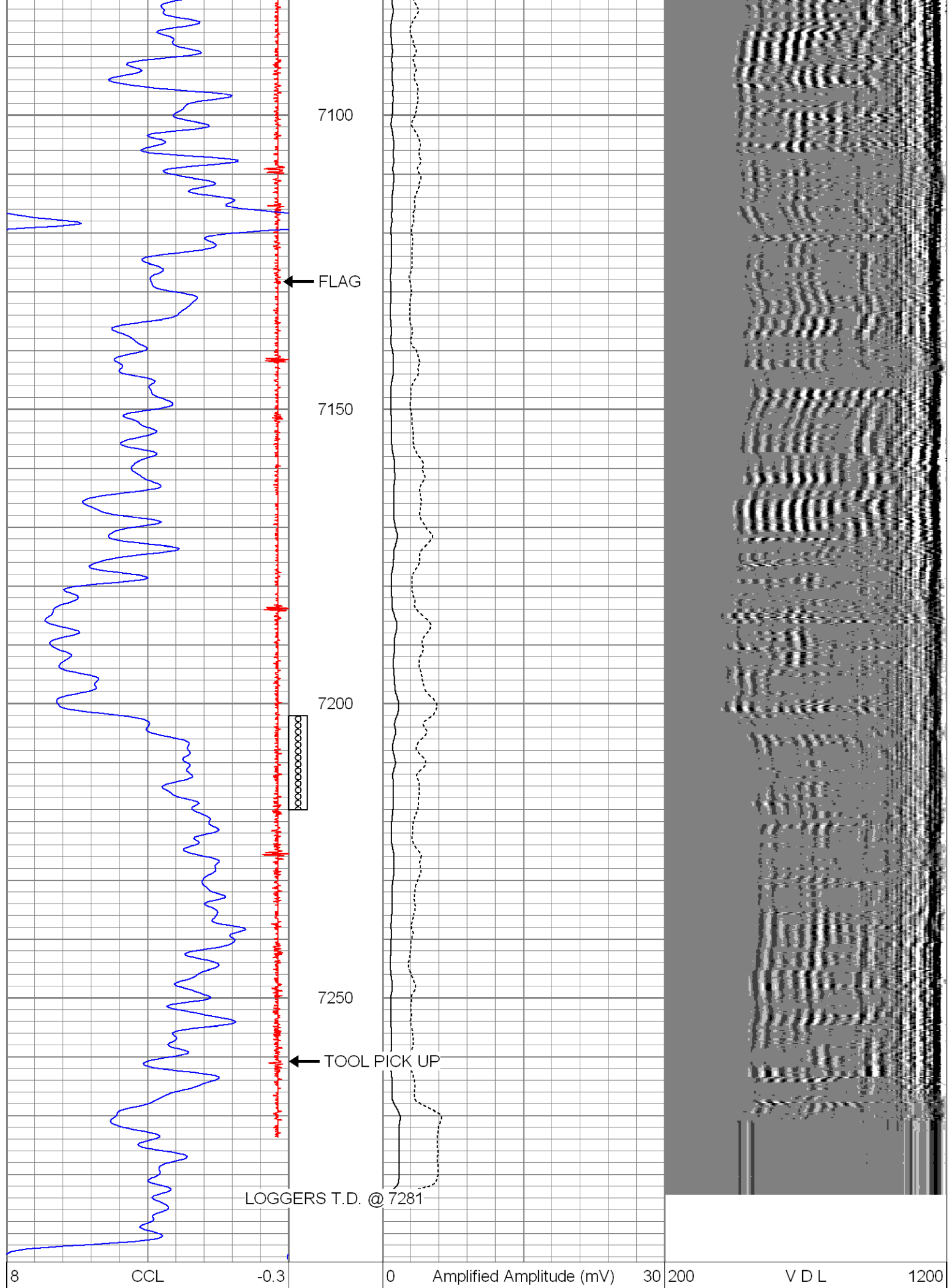
6950

7000

7050







0	Gamma Ray (GAPI)	200
---	------------------	-----

0	Amplitude (mV)	100
---	----------------	-----