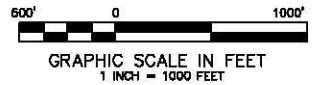


Long Ridge 016-595
Pad Location



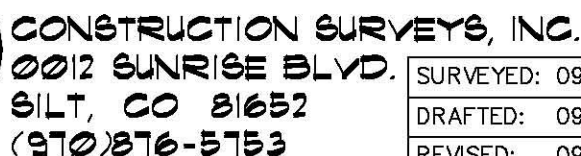
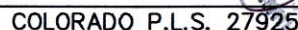
SECTION CORNER
LOCATION BASED ON GLO
RECORD INFORMATION

FIELD SURVEYED WELL
LOCATIONCALCULATED BOTTOM
HOLE LOCATION

THIS WELL LOCATION PLAT WAS PREPARED FOR BERRY PETROLEUM COMPANY TO LOCATE THE LONG RIDGE LR16C 016 595 WELL, 1303 FEET FROM THE SOUTH LINE AND 2282 FEET FROM THE EAST LINE IN THE SW1/4 SE1/4 OF SECTION 16, T. 5 S., R. 95 W. OF THE 6TH P.M. GARFIELD COUNTY, COLORADO.

SURVEYOR'S CERTIFICATE

- I, George R. Bauer: a Professional Land Surveyor in the State of Colorado do hereby certify that this Survey was made under my direct supervision, and that this Plot represents said Survey.



SURVEYED: 09/14/10	SCALE: 1" = 1000'
DRAFTED: 09/20/10	DWG: Berry/LongRidge 016-595.dwg
REVISED: 09/22/10	SHEET: 1 of 11