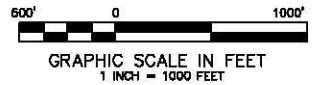


Long Ridge 016-595
Pad Location



SECTION CORNER
LOCATION BASED ON GLO
RECORD INFORMATION

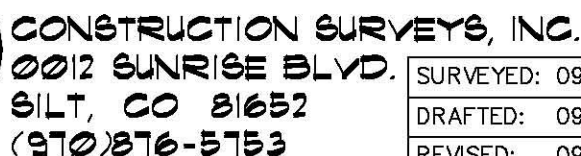
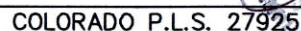
FIELD SURVEYED WELL
LOCATION

CALCULATED BOTTOM
HOLE LOCATION

THIS WELL LOCATION PLAT WAS PREPARED FOR BERRY PETROLEUM COMPANY TO LOCATE THE LONG RIDGE LR15D 016 595 WELL, 1276 FEET FROM THE SOUTH LINE AND 2292 FEET FROM THE EAST LINE IN THE SW1/4 SE1/4 OF SECTION 16, T. 5 S., R. 95 W. OF THE 6TH P.M. GARFIELD COUNTY, COLORADO.

SURVEYOR'S CERTIFICATE

- I, George R. Bauer: a Professional Land Surveyor in the State of Colorado do hereby certify that this Survey was made under my direct supervision, and that this Plot represents said Survey.



SURVEYED: 09/14/10	SCALE: 1" = 1000'
DRAFTED: 09/20/10	DWG: Berry/LongRidge 016-595.dwg
REVISED: 09/22/10	SHEET: 1 of 11