

WELL LOCATION CERTIFICATE

THIS MAP DOES NOT REPRESENT A BOUNDARY SURVEY

HEATH PC GK02-07

SECTION 2
TOWNSHIP 11 NORTH
RANGE 61 WEST

R 61 W

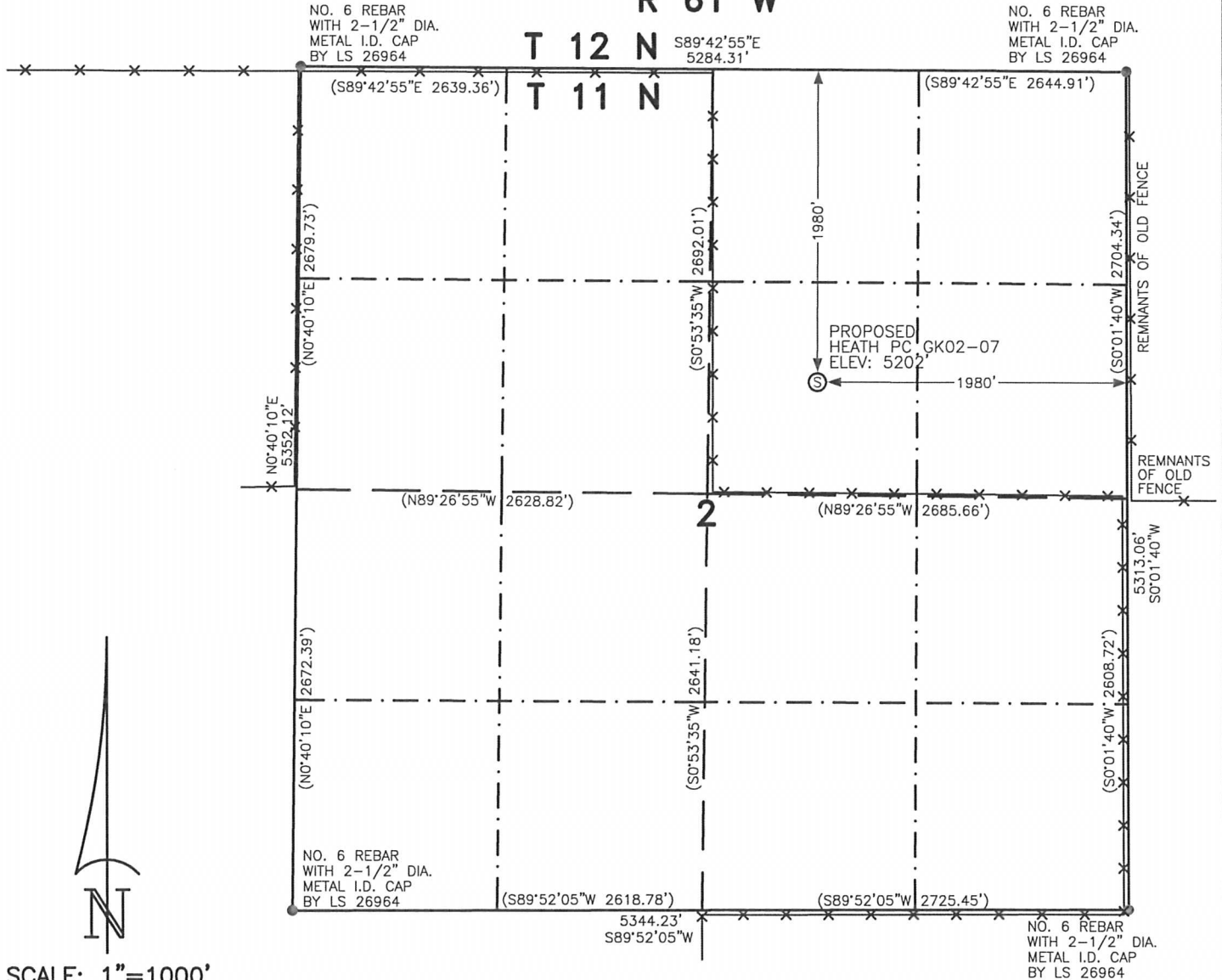
NO. 6 REBAR
WITH 2-1/2" DIA.
METAL I.D. CAP
BY LS 26964

NO. 6 REBAR
WITH 2-1/2" DIA.
METAL I.D. CAP
BY LS 26964

T 12 N
T 11 N

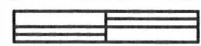
S89°42'55"E
5284.31'

PROPOSED
HEATH PC
GK02-07
ELEV: 5202'



SCALE: 1"=1000'

0 500 1000



SCALE IN FEET

IN ACCORDANCE WITH A REQUEST FROM ERIK VAN DECAR - NOBLE ENERGY INC. LEIBERT-McATEE & ASSOCIATES, INC HAS DETERMINED THE LOCATION OF THE HEATH PC GK02-07 WELL TO BE 1980' FNL AND 1980' FEL, AS MEASURED AT NINETY (90) DEGREES FROM THE SECTION LINES OF SECTION 2, TOWNSHIP 11 NORTH, RANGE 61 WEST, 6TH PRINCIPAL MERIDIAN, WELD COUNTY, COLORADO.

I HEREBY CERTIFY THAT THIS WELL LOCATION CERTIFICATE WAS PREPARED BY ME, OR UNDER MY DIRECT SUPERVISION. THAT THE FIELD WORK WAS COMPLETED ON 8/4/2010, FOR AND ON BEHALF OF NOBLE ENERGY INC, THAT IT IS NOT A LAND SURVEY PLAT OR AN IMPROVEMENT SURVEY PLAT, AND THAT IT IS NOT TO BE RELIED UPON FOR ESTABLISHMENT OF FENCE, BUILDING, OR OTHER FUTURE IMPROVEMENT LINES.

NOTES:

- 1) BASIS OF BEARINGS FOR THIS MAP ARE BASED UPON GPS OBSERVATIONS MADE ON 8/4/2010 BETWEEN MONUMENT LOCATED AT THE NORTHWEST SECTION CORNER AND THE NORTHEAST SECTION CORNER OF SAID SECTION AND WITH ALL BEARINGS SHOWN HEREON RELATIVE THERETO.
- 2) ELEVATIONS ARE BASED UPON NGS OPUS SOLUTION NAVD 88 DATUM.
- 3) SEE VISIBLE IMPROVEMENTS EXHIBIT FOR ALL IMPROVEMENTS WITHIN 600'.
- 4) THE LOCATION FALLS IN PASTURE.

LATITUDE & LONGITUDE (NAD 83 SURFACE HOLE):
LATITUDE: N 40.95280
LONGITUDE: W 104.16971
PDOP: 2.9
QUARTER-QUARTER: SW1/4NE1/4
NEAREST PROPERTY LINE: 670' WEST

LEGEND

⊙ PROPOSED SURFACE LOCATION

== == == ROAD
- x - x - FENCE

CALCULATED DIMENSIONS
ARE IN PARENTHESES

NOTICE: According to Colorado law you MUST commence any legal action based upon any defect in the W.L.C. within three years after you first discover such defect. In no event may only action based upon any defect in this W.L.C. be commenced more than ten years from this sold date of the certification shown hereon.

GPS OPERATOR: DARREN VEAL
DWG NO. 1175-09

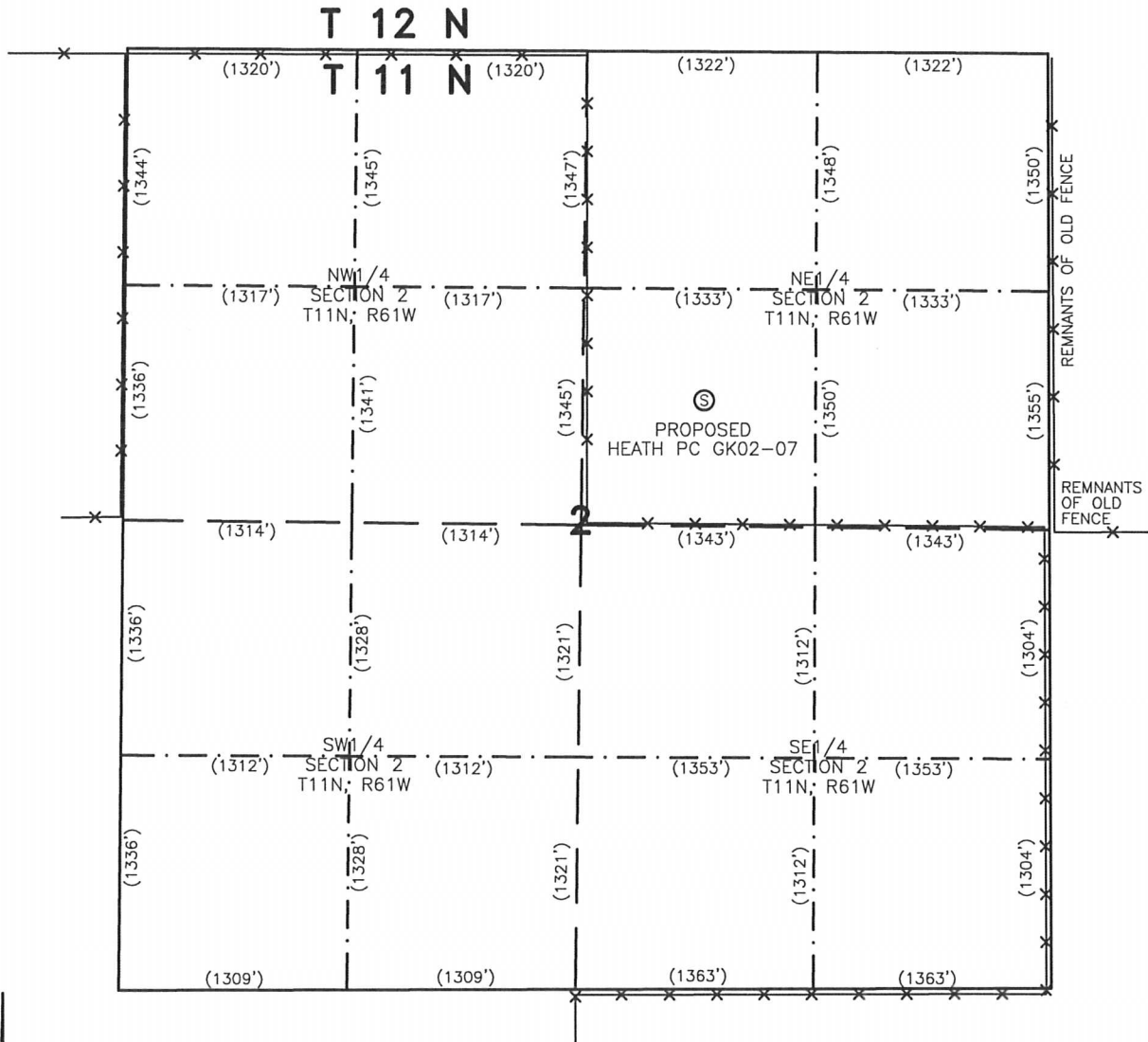
COMPLETED 8-12-10
NICOLE F. HAY
FOR AND ON BEHALF OF
LEIBERT-McATEE & ASSOCIATES, INC
P.L.S. 38044



SITE SKETCH – HEATH PC GK02-07

SECTION 2
TOWNSHIP 11 NORTH
RANGE 61 WEST

R 61 W



NOTES:
1) THIS SKETCH DOES NOT REPRESENT A BOUNDARY SURVEY.



SCALE: 1"=1000'

0 500 1000



SCALE IN FEET

LEGEND

Ⓢ PROPOSED SURFACE LOCATION

== == == ROAD

-x-x- FENCE

CALCULATED DIMENSIONS
ARE IN PARENTHESES